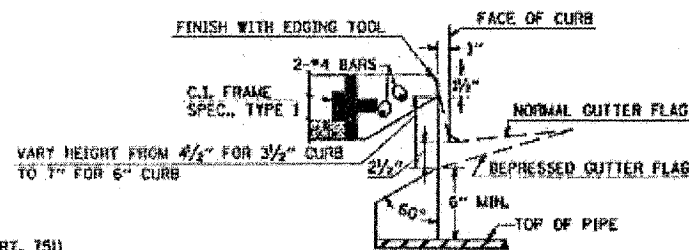
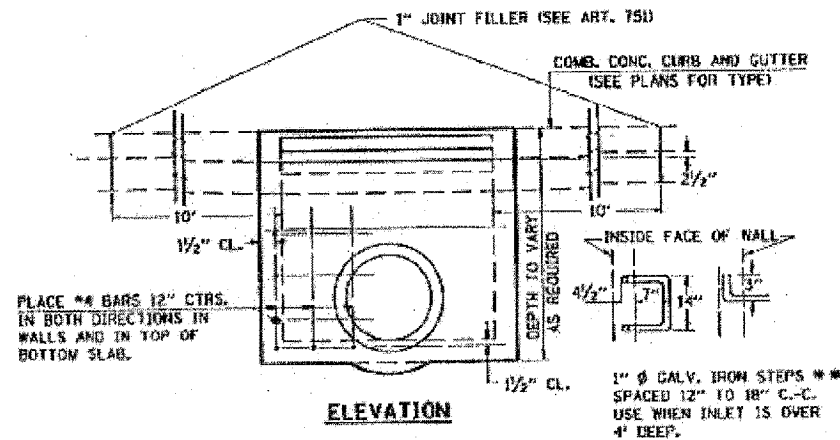


PLAN



DETAIL AT WEIR



ELEVATION

DESIGN	PIPE DIA.	"D"
A	18" ALESS	2'-6"
B	21" x 24"	3'-0"
C	27" x 30"	3'-7"
D	33" x 36"	4'-2"
E	42"	4'-9"
F	48"	5'-0"
G	54"	6'-1"

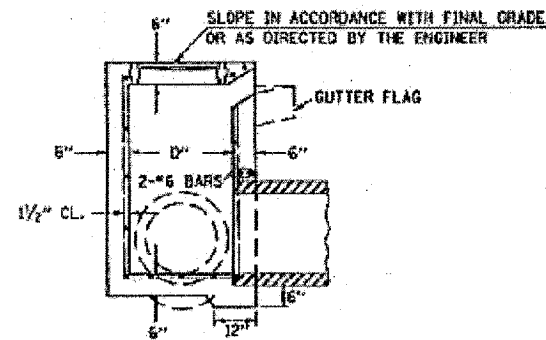
NOTES:

CLASS SI CONCRETE SHALL BE USED THROUGHOUT. SET FACE OF INLET 1" BEHIND FACE OF CURB. DEPRESS GUTTER FLOWLINE AT INLET 2 1/2" BELOW NORMAL GUTTER FLOWLINE. CONSTRUCT TRANSITION IN FLOWLINE IN 30 FEET EACH SIDE OF INLET. PIPES TO BE CONNECTED TO INLET AS SHOWN ON STORM SEWER LAYOUT.

INLETS WILL BE PAID FOR AT THE CONTRACT UNIT PRICE EACH FOR INLET, SPECIAL, TYPE 3, 5 FEET OR INLET, SPECIAL, TYPE 3, 6 FEET WHICH PRICE SHALL INCLUDE THE CAST IRON FRAME, SPECIAL, TYPE 1 WITH TYPE 1 CLOSED LID, THE REINFORCEMENT BARS, METAL STEPS AND JOINT FILLER.

***THE CALV. IRON STEPS AS DETAILED HEREON ARE TYPICAL. STEPS OF OTHER DESIGN AND MATERIAL THAT WILL CONFORM TO THE MINIMUM REQUIREMENTS OF THE STEPS SHOWN, MAY BE USED WHEN APPROVED BY THE ENGINEER.

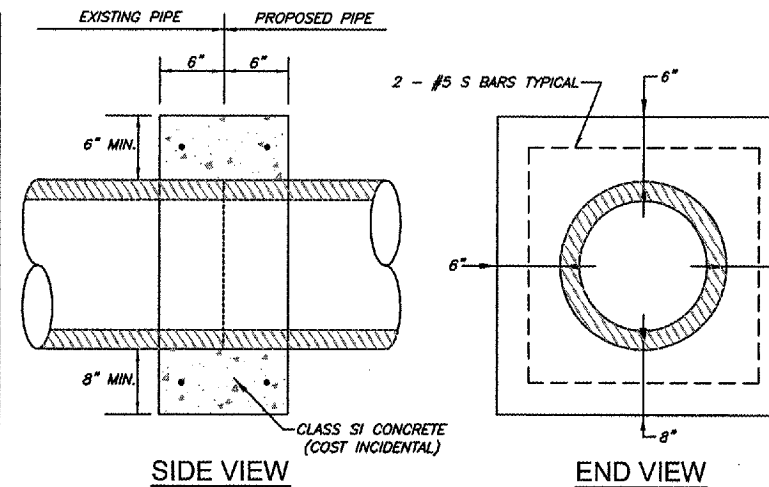
INLETS MAY BE PRECAST WHEN APPROVED BY THE ENGINEER.



SECTION

DETAIL - INLETS, SPECIAL, TYPE 3, 5'

PIPE DIA.	CLASS SI CONCRETE CU. YD. (EST.)
12"	0.16
15"	0.19
18"	0.21
24"	0.29
30"	0.37
36"	0.44
42"	0.53
48"	0.62
54"	0.71



SIDE VIEW

END VIEW

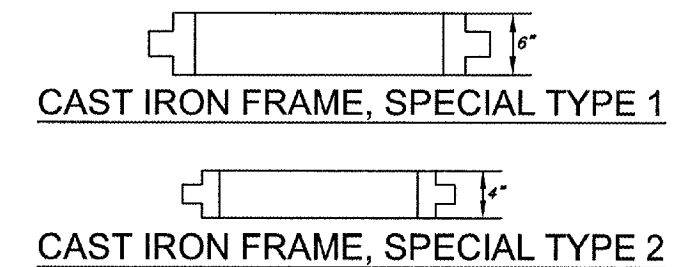
ROUTE	SECTION	COUNTY	TOTAL SHEETS	SHEET NO.
9477	05-00051-00-RP	FRANKLIN	23	14
CITY OF WEST FRANKFORT		CLEVELAND STREET		

CONTRACT NO. 99234

NOTES:

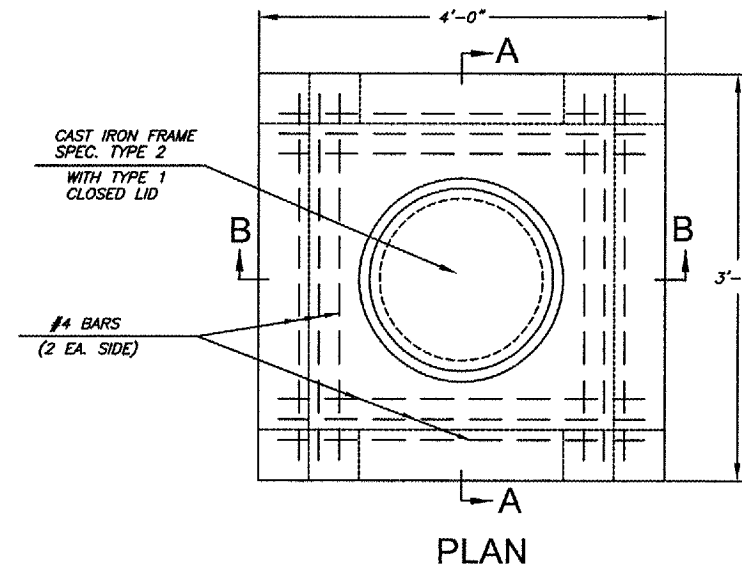
1. ALL CONCRETE SHALL BE PAID FOR AT THE UNIT PRICE FOR CONCRETE STRUCTURES. CLASS SI CONCRETE SHALL BE USED THROUGHOUT.
2. ALL REINFORCEMENT SHALL BE PAID FOR AT THE UNIT PRICE FOR REINFORCEMENT BARS.

CONCRETE COLLAR DETAILS

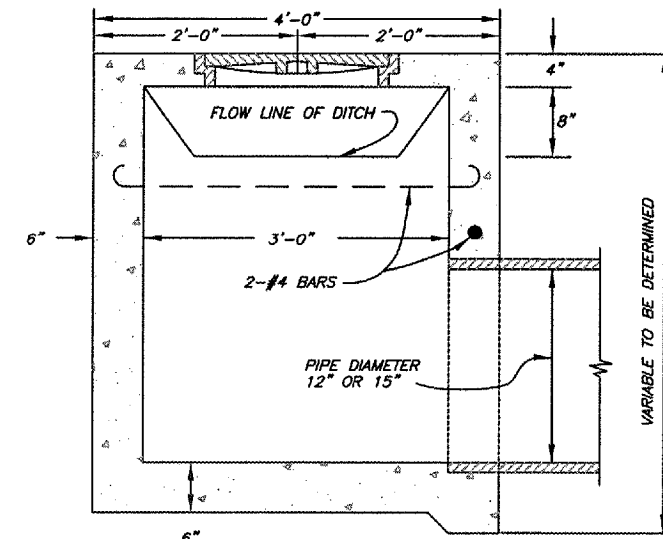


NOTES - INLETS SPECIAL, TYPE 1

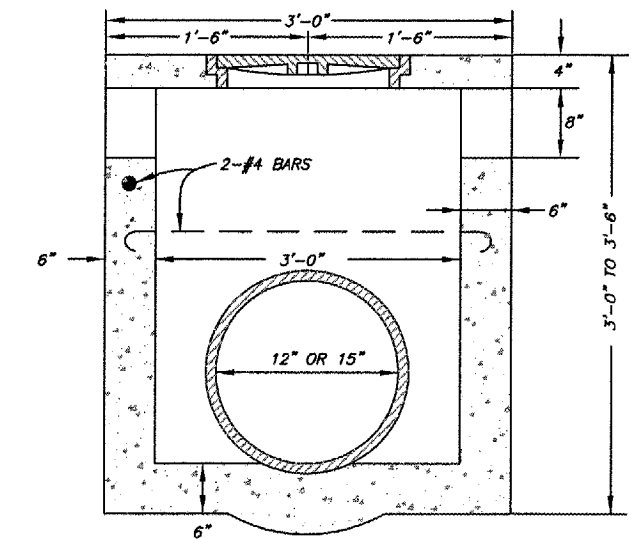
- CLASS SI CONCRETE SHALL BE USED THROUGHOUT.
- THE INLET SHALL BE PAID FOR AT THE CONTRACT UNIT PRICE FOR INLET SPECIAL TYPE 1, WHICH PRICE SHALL INCLUDE THE COST OF THE CAST IRON FRAME, SPECIAL TYPE 2, WITH TYPE 1 CLOSED LID AND REINFORCEMENT BARS AND SHALL BE PAYMENT IN FULL FOR FURNISHING ALL MATERIAL AND FOR CONSTRUCTING THE WORK COMPLETE IN PLACE.
- THE INLET MAY BE PRECAST OR MAY BE CAST IN PLACE. JOINTS AND STEEL BARS IN THE WALLS SHALL BE OMITTED IF CAST IN PLACE. IF PRECAST, THE JOINTS AND STEEL BARS SHALL BE PLACED AS SHOWN.
- THE DEPTH OF THE INLET SHALL BE VARIED TO FIT FIELD CONDITIONS.
- THE LID MAY BE CAST SEPARATELY OR MONOLITHICALLY WITH THE WALLS. TRAPEZIODAL OPENING IN DIRECTION OF DITCH FLOWLINE.



PLAN



SECTION B-B



SECTION A-A

DETAIL - INLETS, SPECIAL, TYPE 1