

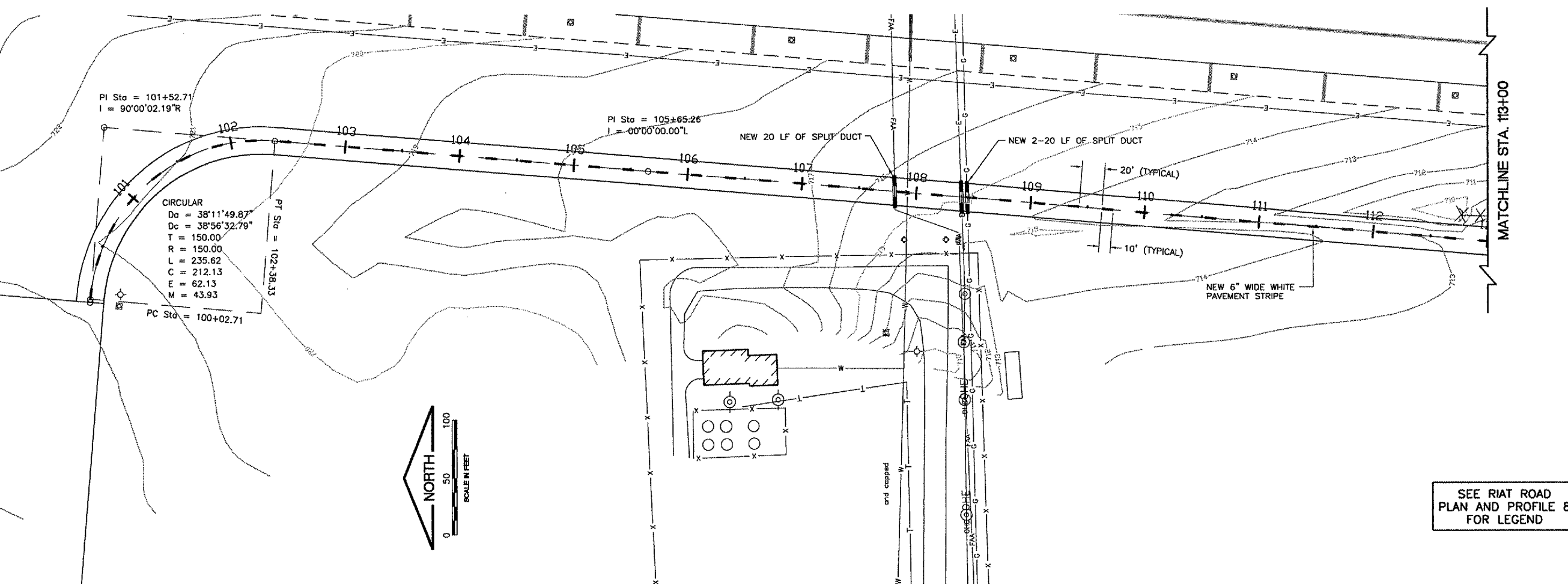
R0012



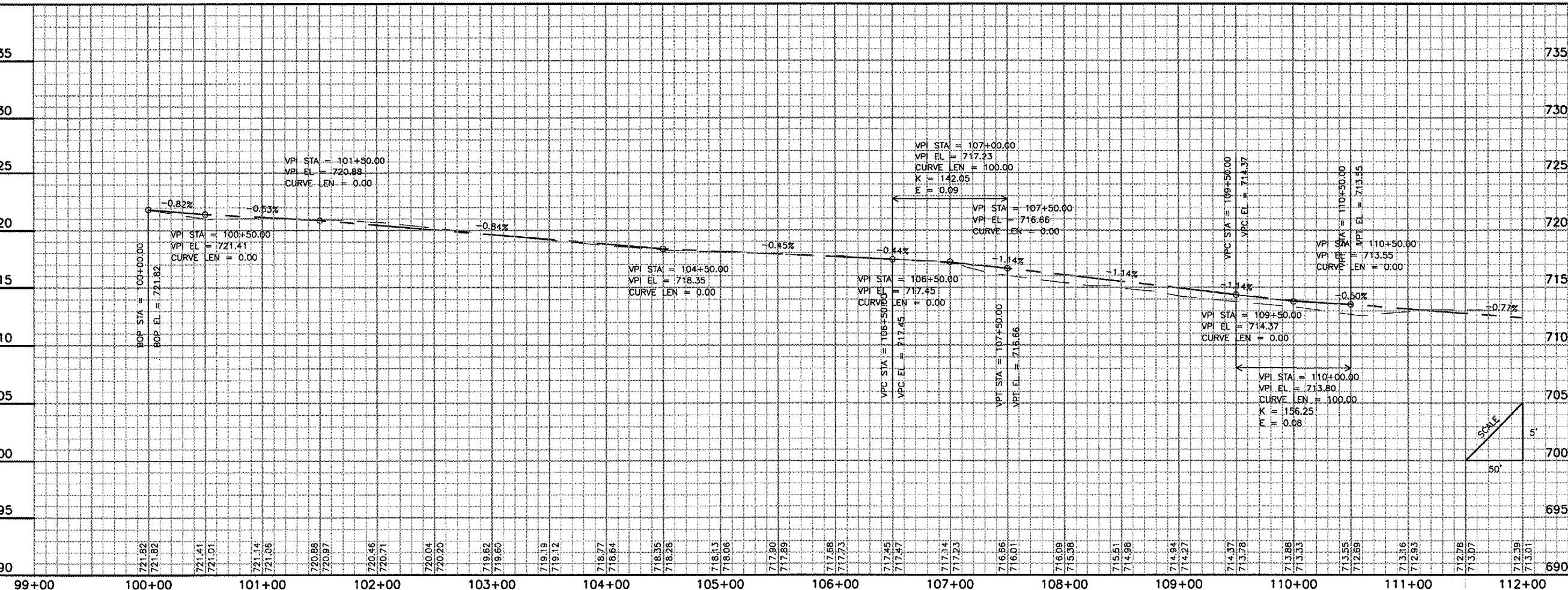
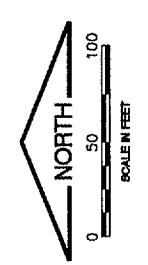
Rockford, Illinois
Greater Rockford
Airport Authority

AIP: 3-17-0088-43
RFD-3487

Rehab. Txy B;
Rwy 1/19 RSA Impr.,
Falcon Rd. Reloc.
S. RIAT Rd. Constr.
E. RIAT Rd. Reloc.



SEE RIAT ROAD
PLAN AND PROFILE 8
FOR LEGEND



Revisions		
No.	Date	Description

0 1
THIS BAR IS EQUAL TO 1"
AT FULL SCALE (17 X 11).

DESIGN BY: CMT-ARR
DRAWN BY: CMT-ARR
CHECKED BY: CMT-ARR
APPROVED BY: JGP
DATE: 7.29.2005
JOB No: 05258-04-00

**PLAN AND
PROFILE
1
(SPP1)**

30

SHEET 30 OF 52 SHEETS