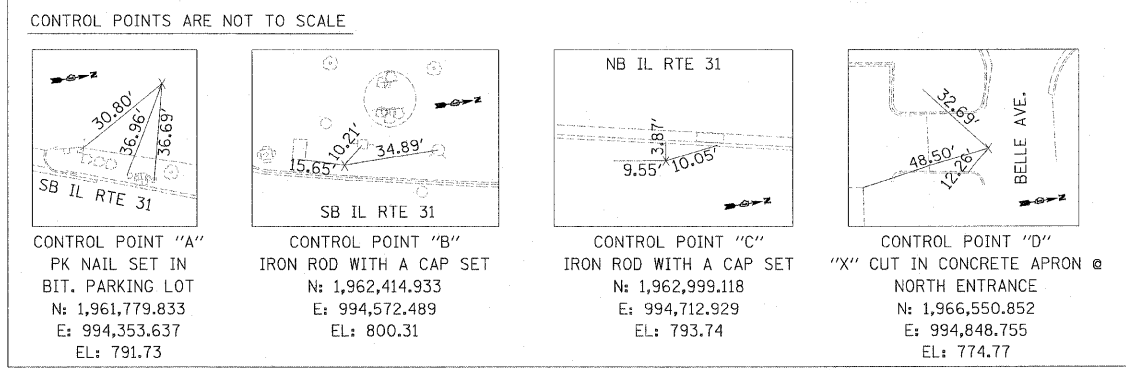
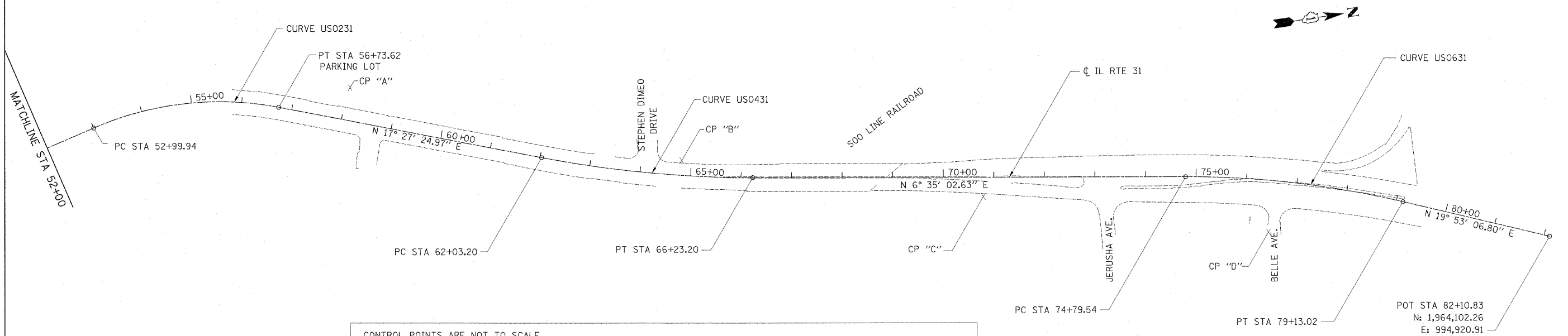


CURVE US0231  
 PI STA. = 54+92.55  
 N: 1,961,451.40  
 E: 994,318.42  
 $\Delta = 34^\circ 14' 59''$  (RT)  
 D = 9° 09' 56"  
 R = 625.12'  
 T = 192.61'  
 L = 373.68'  
 E = 29.00'  
 e = EXISTING  
 P.C. STA. = 52+99.94  
 N: 1,961,267.00  
 E: 994,374.07  
 P.T. STA. = 56+73.62  
 N: 1,961,635.14  
 E: 994,376.20

CURVE US0431  
 PI STA. = 64+13.83  
 N: 1,962,341.25  
 E: 994,598.26  
 $\Delta = 10^\circ 52' 22''$  (LT)  
 D = 2° 35' 20"  
 R = 2,213.24'  
 T = 210.63'  
 L = 420.00'  
 E = 10.00'  
 e = EXISTING  
 P.C. STA. = 62+03.20  
 N: 1,962,140.32  
 E: 994,535.07  
 P.T. STA. = 66+23.20  
 N: 1,962,550.49  
 E: 994,622.41

CURVE US0631  
 PI STA. = 76+97.26  
 N: 1,963,617.47  
 E: 994,745.56  
 $\Delta = 13^\circ 18' 04''$  (RT)  
 D = 3° 04' 06"  
 R = 1,867.25'  
 T = 217.72'  
 L = 433.48'  
 E = 12.65'  
 e = EXISTING  
 P.C. STA. = 74+79.54  
 N: 1,963,401.19  
 E: 994,720.60  
 P.T. STA. = 79+13.02  
 N: 1,963,822.21  
 E: 994,819.62



BENCHMARK ELEVATION 797.38  
 DESCRIPTION: U.S.G.S. DISK SET VERTICALLY IN EAST FACE OF BRICK FACE SOUTHEAST CORNER OF THE OLD PORTION OF HIGHLAND AVE. CHURCH OF THE BRETHREN, 0.8 FT. NORTH OF THE CORNER, AND 81 FT. SOUTHWEST OF THE SOUTHWEST CORNER OF THE NEW PORTION OF THE CHURCH AND ABOUT 3 FT. ABOVE GROUND LEVEL. (U.S.G.S. W131)

BOWMAN, BARRETT & ASSOCIATES INC.  
 CONSULTING ENGINEERS  
 Chicago, Illinois  
 312.228.0100  
 www.bbainc.com

FILE NAME = D160C06-shr-ATB.dgn	USER NAME = default	DESIGNED -	REVISED -
PLOT SCALE = #SCALE#		DRAWN - RA	REVISED -
PLOT DATE = 6/30/2011		CHECKED - RS	REVISED -
		DATE - 07/01/2011	REVISED -

**STATE OF ILLINOIS  
 DEPARTMENT OF TRANSPORTATION**

**ALIGNMENT, TIES AND BENCHMARKS**

SCALE: NA SHEET NO. 1 OF 1 SHEETS STA. 44+72.47 TO STA. 82+10.83

F.A. RTE.	SECTION	COUNTY	TOTAL SHEETS	SHEET NO.
3887	R-VB-R	KANE	83	10
CONTRACT NO. 60C06			[ILLINOIS] FED. AID PROJECT	

s:\10\06\_cadd\1131\1131000\_Sheets\11310006-shr-ATB.dgn