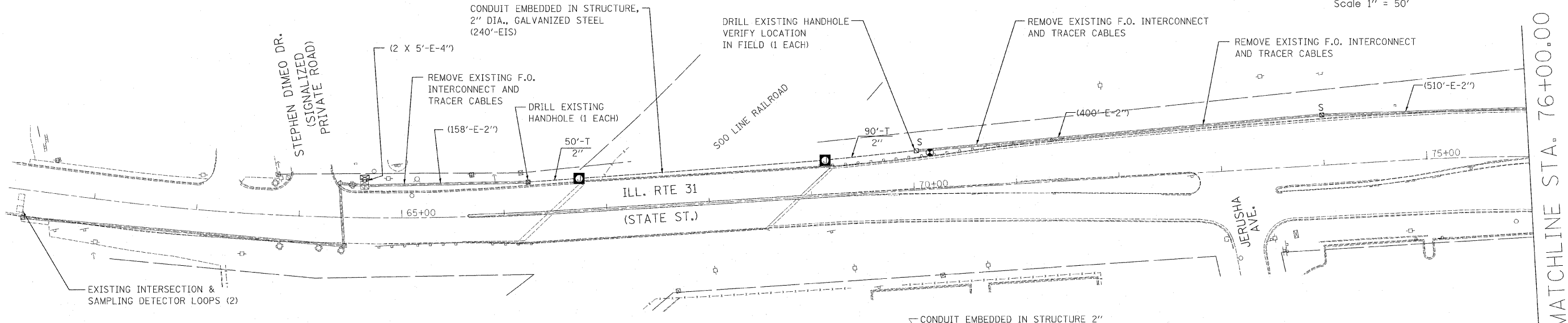
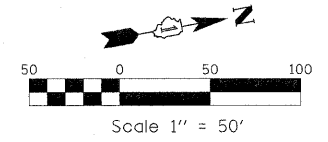
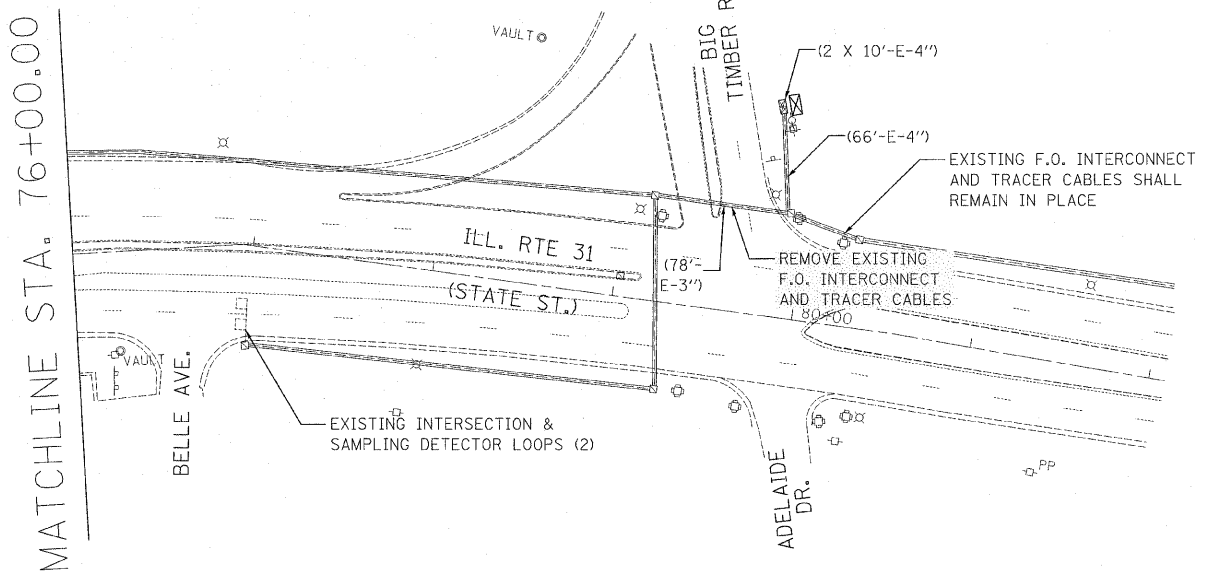


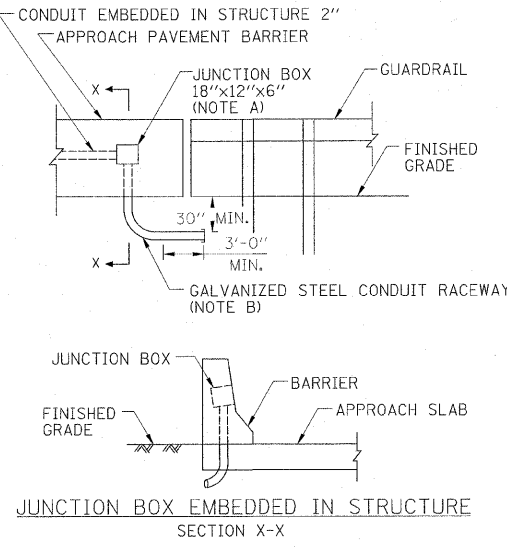
NOTE:
THE TRAFFIC SIGNAL CONTROLLER EQUIPMENT FOR THIS PROJECT SHALL BE "EAGLE" TO MATCH THE EXISTING ADJACENT SYSTEM.



MATCHLINE STA. 76+00.00



- A. COORDINATE PLACEMENT OF JUNCTION BOX WITH GUARDRAIL BARRIER TERMINAL ATTACHMENT.
B. COORDINATE CONDUIT PLACEMENT TO TERMINATE OUTSIDE OF PAVEMENT AND AVOID GUARDRAIL.



- NOTE:
1. REMOVE EXISTING FIBER OPTIC CABLE AND TRACER CABLE BETWEEN STEPHEN DIMEO DRIVE AND BIG TIMBER ROAD. INSTALL NEW FIBER OPTIC CABLE AS SHOWN IN THE PLANS AND AS DIRECTED BY THE ENGINEER.
 2. THE END OF THE TRACER CABLE SHALL BE CONTINUOUS AND EXTEND INTO THE CONTROLLER CABINET.
 3. THE EXISTING LEAD-IN CABLE SHALL BE REUSED FOR THE NEW DETECTOR LOOPS.
 4. PROPOSED CONDUIT EXPANSION FITTINGS ARE REQUIRED AT ALL LOCATIONS WHERE CONDUIT EXTENDS BETWEEN TWO CONCRETE SECTIONS THAT ARE CAPABLE OF MOVEMENT. THE EXPANSION FITTINGS SHALL COMPLY WITH STD. SPEC. ARTICLE 1088.020. COST INCLUDED WITH CONDUIT EMBEDDED IN STRUCTURE, 2" DIA., GALVANIZED STEEL.
 5. JUNCTION BOX SHALL BE EMBEDDED IN PARAPET - UPPER PORTION WITH COVER FACING IL 31 AND MUST BE ACCESSIBLE (TYP.) COORDINATE W/APPROACH PVMT. SEE DETAIL THIS SHEET.

THE ENVIRONMENTAL FIRM IS REQUIRED TO CONTINUOUSLY MONITOR FOR WORKER PROTECTION AND SOIL CONTAMINATION AT SEVERAL AREAS. SEE SPECIAL PROVISION AND SUPPLEMENTAL SPECIFICATIONS FOR DETAILS.

| | | | | | | | | | | | |
|-------------|--------------------|-------------------|-----------|-----------------------------------------------------------|------------------------------------------------------------------------------------------------------------------|--------------------|---------|-------------------------------------------------|--------------|--------------------------|--|
| FILE NAME = | USER NAME = #USER# | DESIGNED - FML | REVISED - | STATE OF ILLINOIS DEPARTMENT OF TRANSPORTATION | PROPOSED INTERCONNECT IL RT 31 (STATE ST) FROM STEPHEN DIMEO DRIVE TO BIG TIMBER RD./ADELAIDE DR. | F.A.U. RTE. | SECTION | COUNTY | TOTAL SHEETS | SHEET NO. | |
| #FILE# | | DRAWN - FML | REVISED - | | | 3887 | R-VB-R | KANE | 83 | 33 | |
| | | CHECKED - KC | REVISED - | | | SCALE: 1" = 50' | | SHEET NO. OF SHEETS | | STA. 67+00 TO STA. 82+10 | |
| | | DATE - 07/01/2011 | REVISED - | | | CONTRACT NO. 60C06 | | FED. ROAD DIST. NO. [ILLINOIS] FED. AID PROJECT | | | |