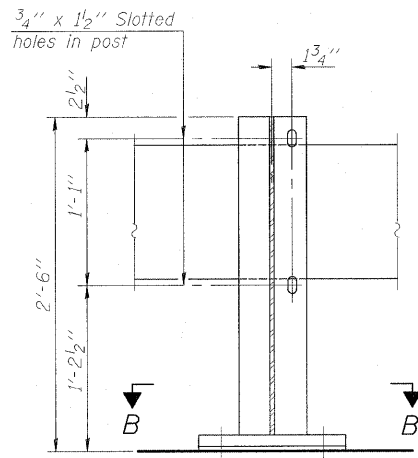
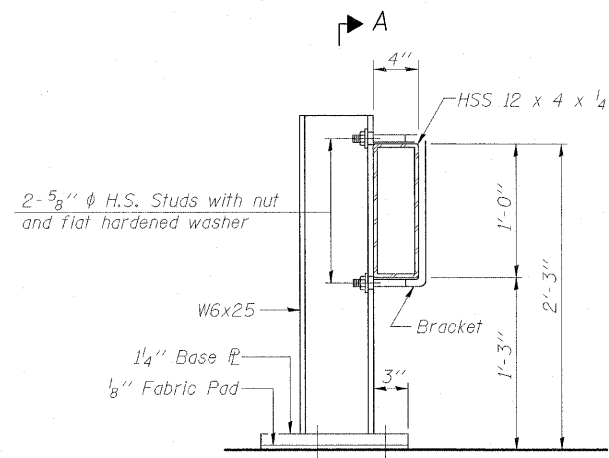


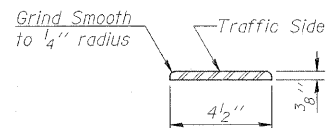
STATE OF ILLINOIS
DEPARTMENT OF TRANSPORTATION



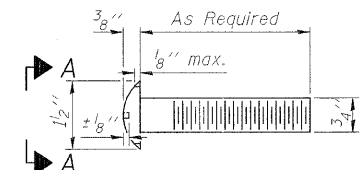
SECTION A-A



SECTION AT RAIL POST

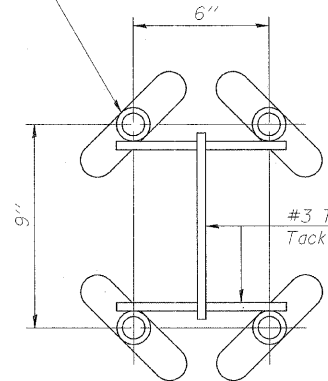


DETAIL A

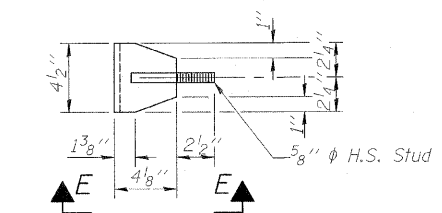


VIEW A-A
ROUND HEAD BOLT

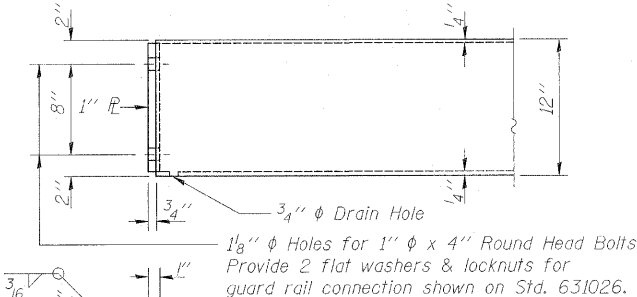
1" ϕ Flared thin slab ferrule insert. Electroplated according to ASTM B 633 Service Condition 4.



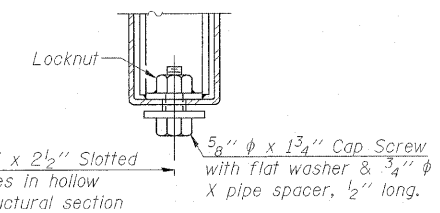
INSERT DETAIL



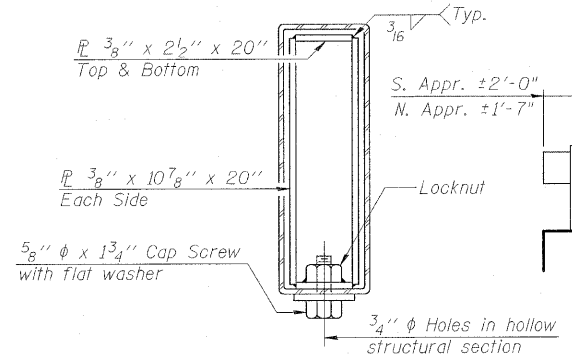
VIEW C-C



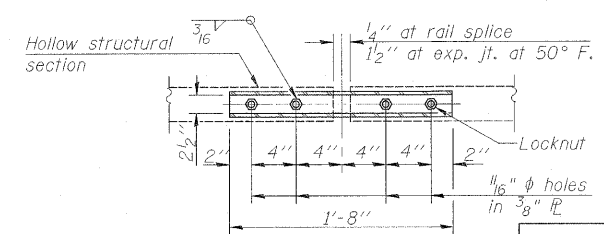
END OF RAIL DETAILS



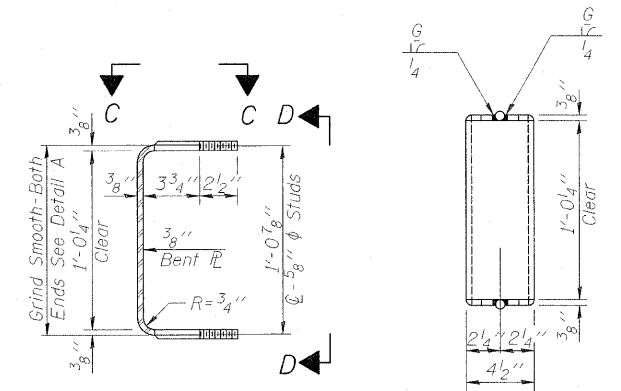
RAIL SPLICE CONNECTION
AT EXPANSION JT.



SECTION AT RAIL SPLICE

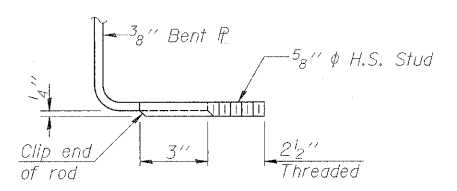


PLAN-BOTT. SPLICE
TYPICAL



SECTION THRU BRACKET

VIEW D-D

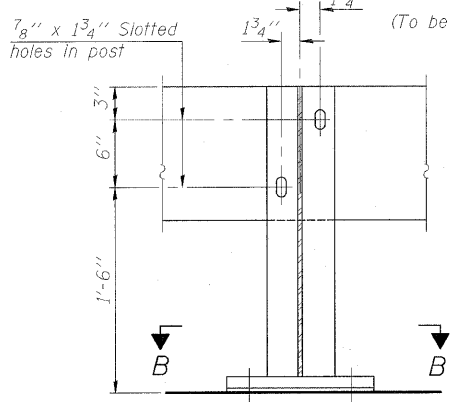


VIEW E-E

Notes:
The contact surfaces between post flange, rail and inside face of bracket for Alternate I shall be free of all lubricants.
The nut for 5/8 inch high strength studs used in Alternate I to connect bracket to post shall be tightened to a snug fit and given an additional one half turn.

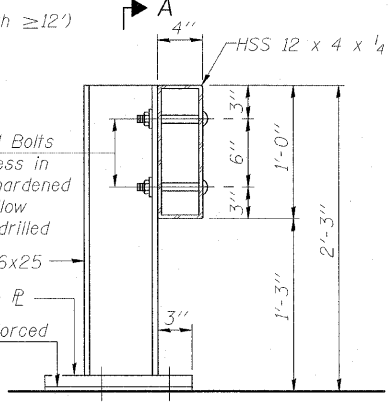
ALTERNATE I

(To be used only for Roadway width $\geq 12'$)



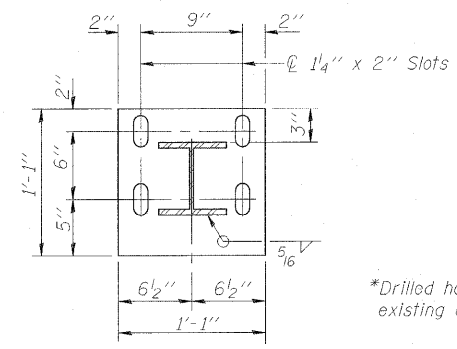
SECTION A-A

2-3/4 inch ϕ x 6 inch Round Head Bolts (With slot or approved recess in head) with locknut & flat hardened washer. 7/8 inch ϕ holes in hollow structural section may be drilled in the field.

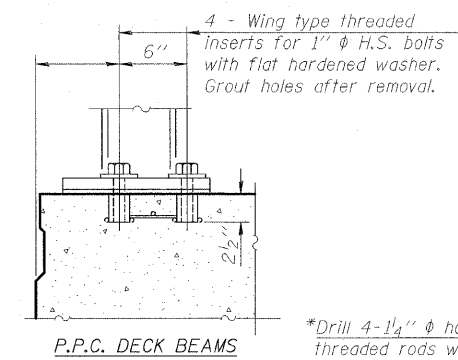


SECTION AT RAIL POST

ALTERNATE II

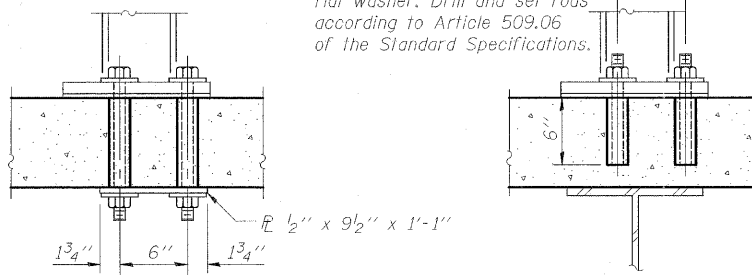


SECTION B-B

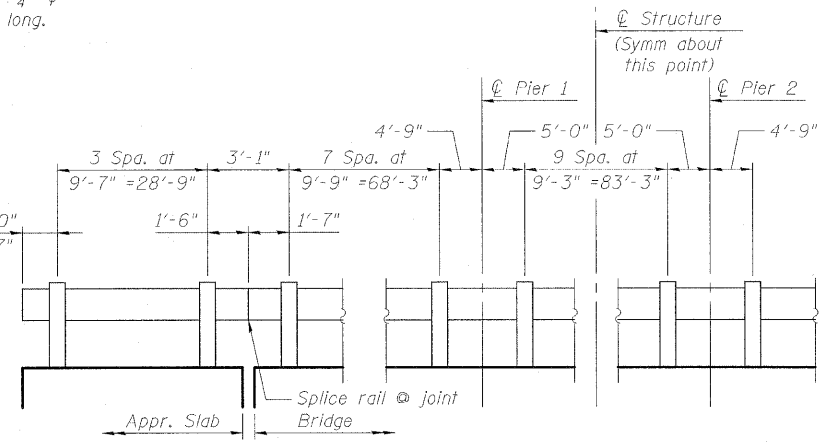


P.P.C. DECK BEAMS

*Drill 4-1 1/2 inch ϕ holes for 1 inch ϕ threaded rods with hex nut and flat washer. Drill and set rods according to Article 509.06 of the Standard Specifications.



NEW & EXISTING DECKS
ANCHORAGE DETAILS



TEMPORARY BRIDGE RAIL POST SPACING

BILL OF MATERIAL

Item	Unit	Quantity
Steel Railing (Temporary)	Foot	306

STEEL RAILING (TEMPORARY)
STRUCTURE NO. 045-0016

SHEET NO.	SECTION	COUNTY	TOTAL SHEETS	SHEET NO.
S-4	R-VB-R	KANE	83	38
CONTRACT NO. 60C06				
FED. ROAD DIST. NO. 1 ILLINOIS FED. AID PROJECT				

DESIGNED	- TAH
CHECKED	- DF
DRAWN	- LAM
CHECKED	- DF