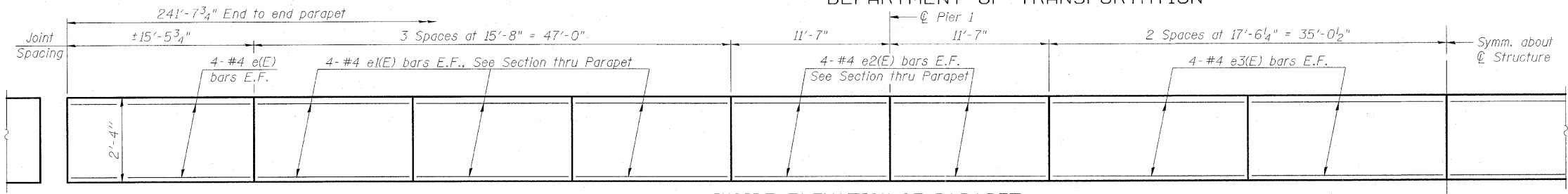
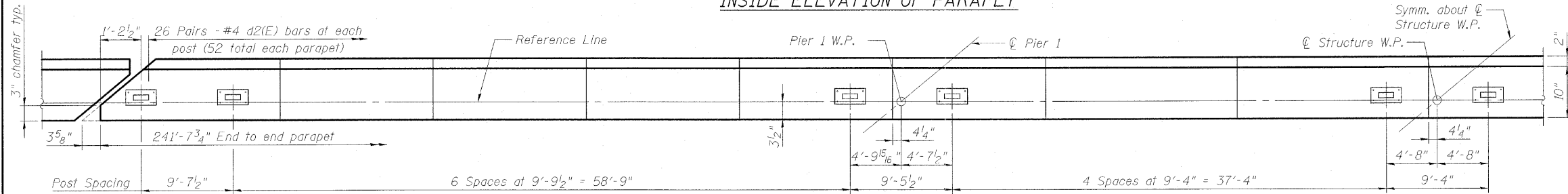


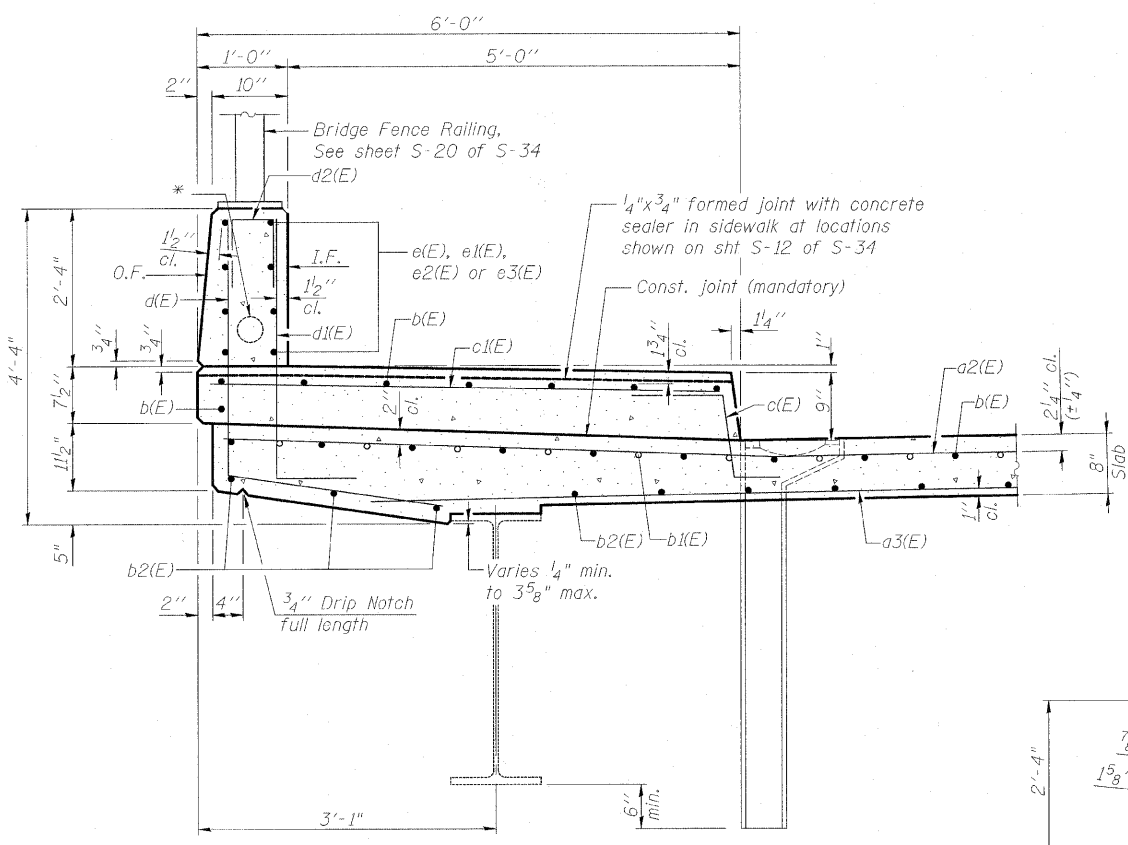
STATE OF ILLINOIS
DEPARTMENT OF TRANSPORTATION



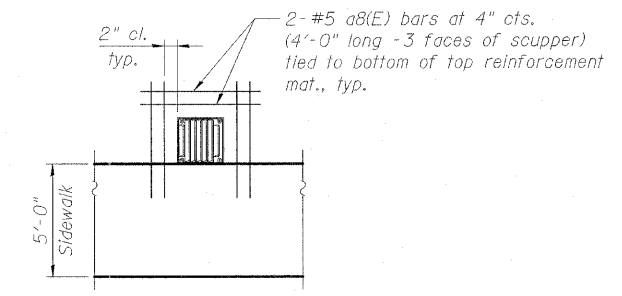
INSIDE ELEVATION OF PARAPET



PARAPET PLAN/FENCE POST SPACES

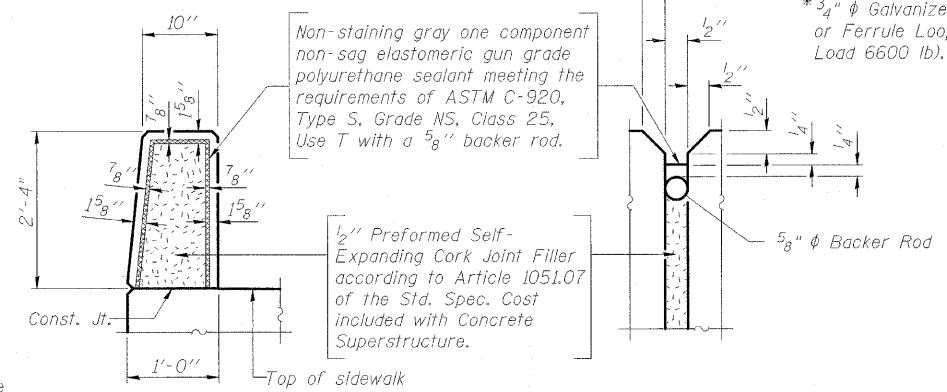


SECTION THRU WEST SIDEWALK

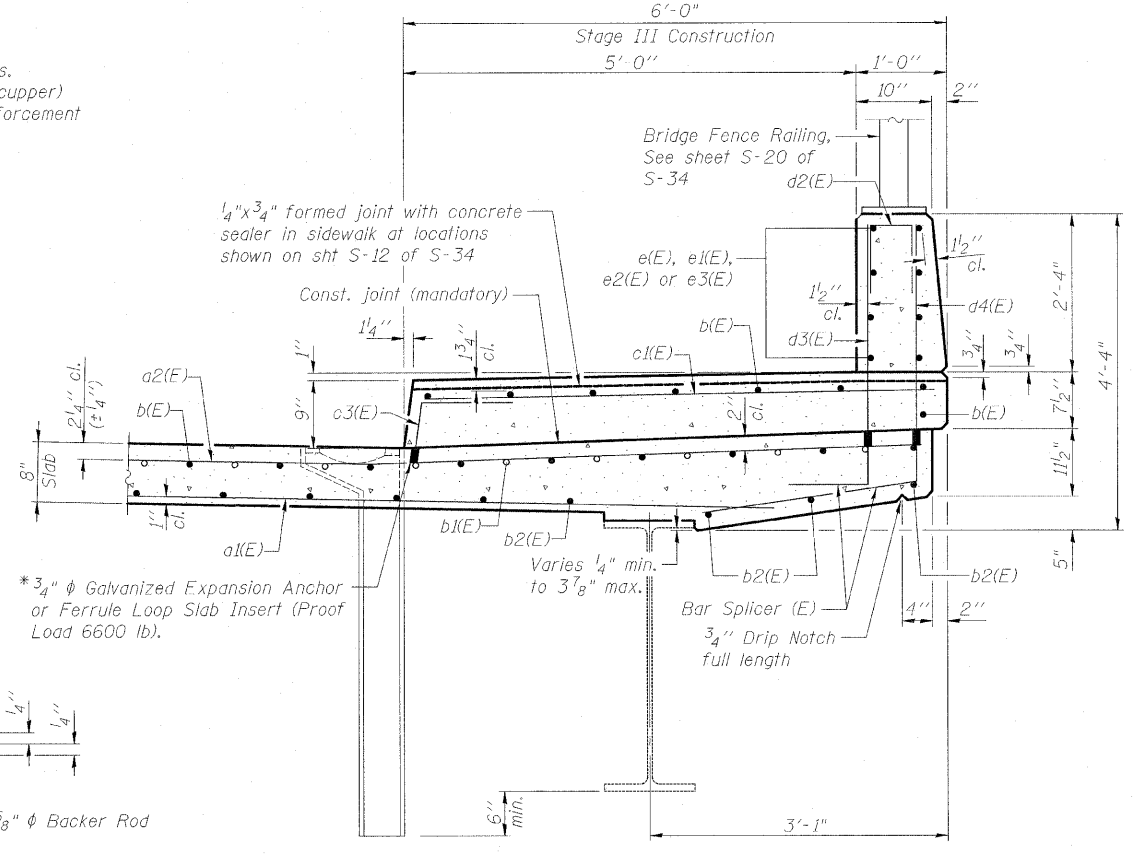


SCUPPER DETAIL

Space transverse bars to miss scupper and cut longitudinal bars as necessary at scupper to provide 2" cl.



PARAPET JOINT DETAILS



SECTION THRU EAST SIDEWALK

*Cost included with Reinforcement Bars, Epoxy Coated

SUPERSTRUCTURE DETAILS I
STRUCTURE NO. 045-0016

DESIGNED - DF
CHECKED - TAH
DRAWN - LAM
CHECKED - DF

* 2" ϕ Galvanized steel conduit embedded in parapet with expansion couplings at joint locations. Provide 1/2" clear of all reinforcement bars. See Traffic Signal Interconnect Plans for details.

BOWMAN, BARRETT & ASSOCIATES INC.
CONSULTING ENGINEERS
Chicago, Illinois
312.228.0100
www.bbainc.com
Job No. 910

SHEET NO. S-13 S-34 SHEETS	F.A.U. RTE. 3887	SECTION R-VB-R	COUNTY KANE	TOTAL SHEETS 83	SHEET NO. 47
	CONTRACT NO. 60C06				
FED. ROAD DIST. NO. 1 ILLINOIS FED. AID PROJECT					