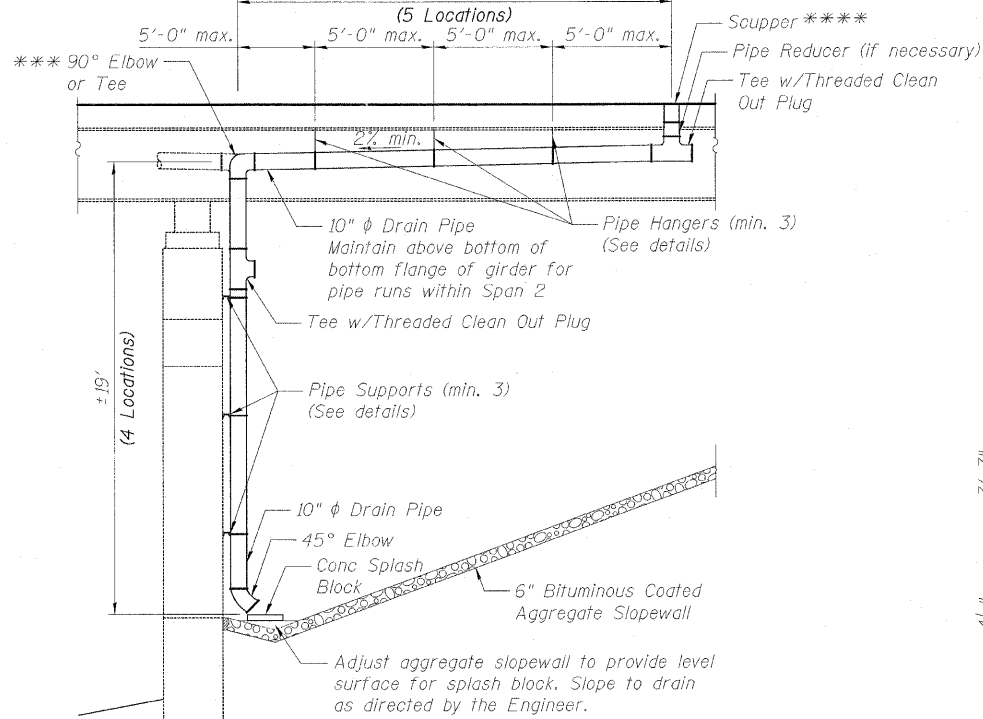


STATE OF ILLINOIS
DEPARTMENT OF TRANSPORTATION

Varies ±9'-6" to ±11'-0"

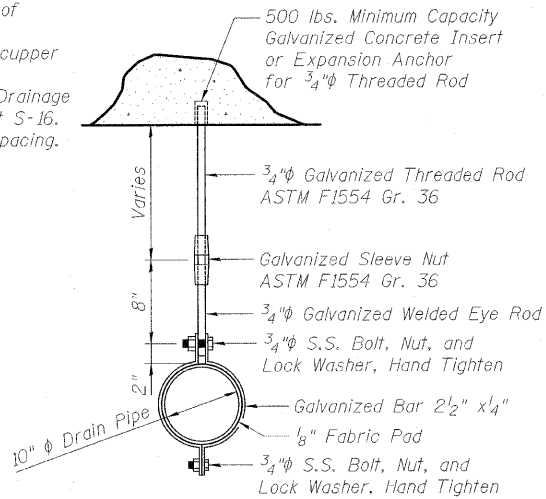


DRAINAGE SYSTEM TYPICAL ELEVATION

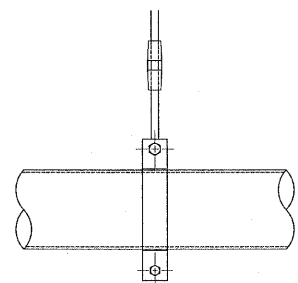
See sheet S-2 for locations of Drainage System.

*** Use tee when connecting 2 scupper outlets to downspout.

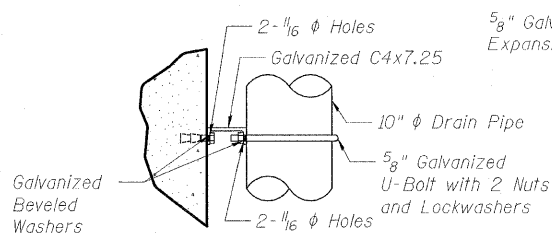
**** Scupper will be paid for as Drainage Scupper DS-12M10, see sheet S-16. See sheet S-1 for scupper spacing.



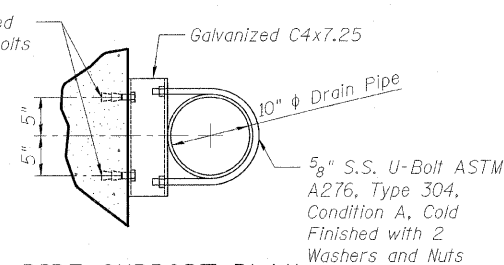
PIPE HANGER SECTION



PIPE HANGER ELEVATION



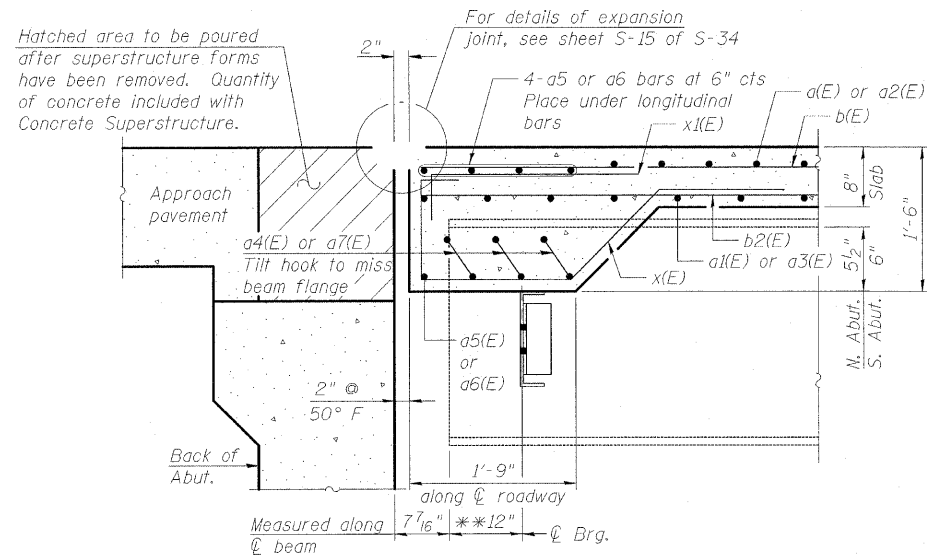
PIPE SUPPORT ELEVATION



PIPE SUPPORT PLAN

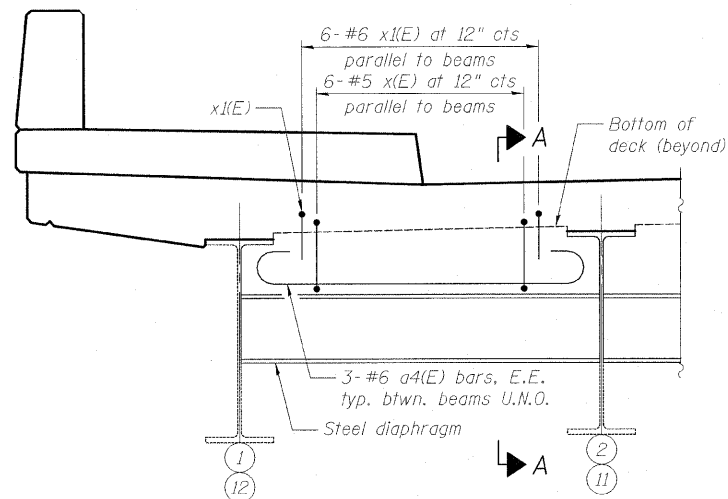
DRAINAGE SYSTEM

For 3 scuppers located near abutments, see sheet S-16 for Downspout Details



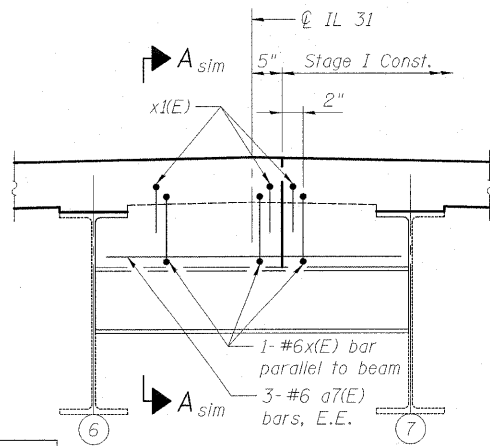
SECTION A-A

(Dimensions at right Ls to back of abutment unless noted otherwise)
** Exist beam flange is chamfered, max dimension shown



DECK END DIAPHRAGM

(Typical between beams U.N.O.)



DECK DIAPHRAGM AT STAGE CONSTRUCTION

(Looking North)

(Dimensions at Rt Ls to Rdwy)

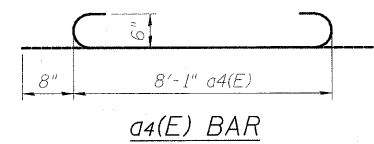
DESIGNED - DF
CHECKED - TAH
DRAWN - LAM
CHECKED - DF

SUPERSTRUCTURE
BILL OF MATERIAL

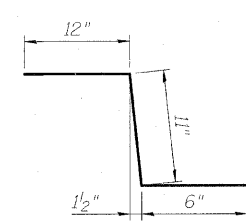
Bar	No.	Size	Length	Shape	
a(E)	322	#5	30'-1"	—	
a1(E)	290	#5	29'-4"	—	
a2(E)	322	#5	30'-11"	—	
a3(E)	290	#5	30'-2"	—	
a4(E)	60	#6	9'-5"	—	
a5(E)	20	#6	25'-1"	—	
a6(E)	20	#6	25'-7"	—	
a7(E)	6	#6	3'-2"	—	
a8(E)	48	#5	4'-0"	—	
b(E)	632	#5	32'-2"	—	
b1(E)	122	#6	40'-0"	—	
b2(E)	522	#5	28'-10"	—	
c(E)	243	#5	2'-5"	—	
c1(E)	486	#5	5'-7"	—	
c2(E)	4	#5	8'-5"	—	
c3(E)	243	#5	1'-9"	—	
d(E)	243	#4	5'-9"	—	
d1(E)	243	#6	4'-6"	—	
d2(E)	104	#4	2'-0"	—	
d3(E)	243	#6	2'-10"	—	
d4(E)	243	#4	2'-10"	—	
e(E)	32	#4	15'-2"	—	
e1(E)	96	#4	15'-4"	—	
e2(E)	64	#4	11'-3"	—	
e3(E)	64	#4	17'-2"	—	
x(E)	126	#5	6'-8"	—	
x1(E)	126	#6	4'-1"	—	
Reinforcement Bars, Epoxy Coated				Pound	96,130
Concrete Superstructure				Cu. Yd.	567.4
Drainage System				L. Sum	1
Bridge Deck Grooving				Sq. Yd.	1,291
Protective Coat				Sq. Yd.	1,824

Bars indicated thus 1 x 4 - #8 etc. indicates 1 line of bars with 4 lengths per line.

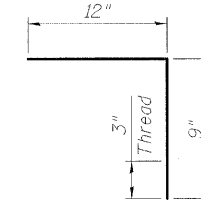
* Bars d3(E), and d4(E) are to be furnished by bar splicer supplier and cost included in the contract unit price for Bar Splicers. See sheet S-34 of S-34 for bar splicer assembly details.



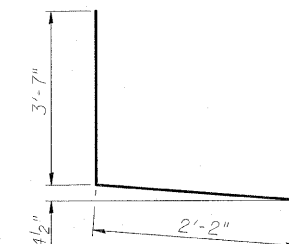
a4(E) BAR



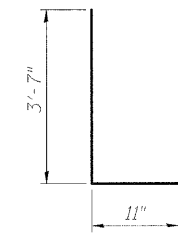
BAR c(E)



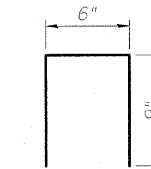
BAR c3(E)



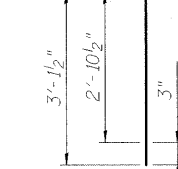
BAR d(E)



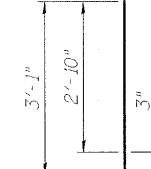
BAR d1(E)



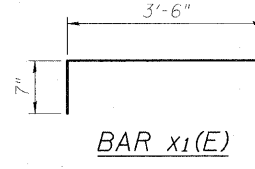
BAR d2(E)



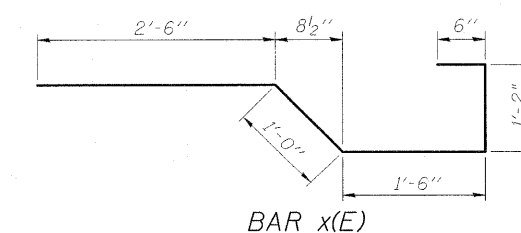
*BAR d3(E)



*BAR d4(E)



BAR x1(E)



BAR x(E)

SUPERSTRUCTURE DETAILS II
STRUCTURE NO. 045-0016

SHEET NO. S-14	F.A.U. RTE. 3887	SECTION R-VB-R	COUNTY KANE	TOTAL SHEETS 83	SHEET NO. 48
S-34 SHEETS			CONTRACT NO. 60C06		
FED. ROAD DIST. NO. 1 ILLINOIS FED. AID PROJECT					

BOWMAN, BARRETT & ASSOCIATES INC.
CONSULTING ENGINEERS
Chicago, Illinois
312.228.0100
www.bbainc.com
Job No. 910

