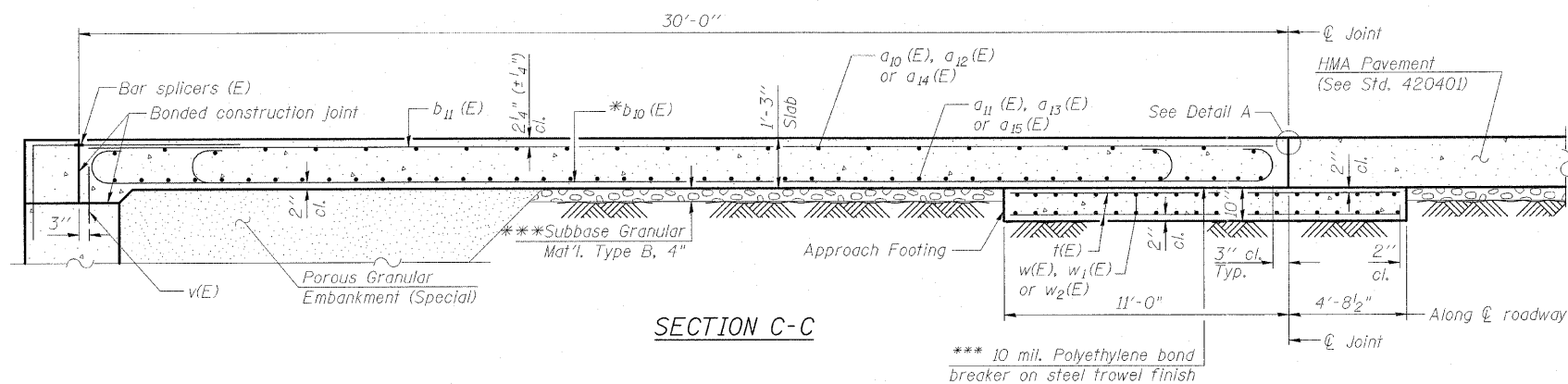


STATE OF ILLINOIS
DEPARTMENT OF TRANSPORTATION

Notes:

Approach slab and parapet concrete shall be paid for as Concrete Superstructure.
Approach footing concrete shall be paid for as Concrete Structures.
Reinforcement shall be paid for as Reinforcement Bars, Epoxy Coated.
For v(E) bar details, see sheet S-27 and S-29 of S-34.
The approach footing maximum applied service bearing pressure (Q_{max}) = 2.0 ksf.
For bar splicer details, see sheet S-34 of S-34.
Cost of excavation for approach footing included with Concrete Structures.
For Porous Granular Embankment, Special and drainage treatment details, see sheet S-31 of S-34.
Cost of PJF included with Concrete Structures.
See sheet S-14 of S-34 for c(E), c3(E) and d2(E) bar details.



SECTION C-C

* Tilt #9 b1(E) bars as required to maintain clearance.

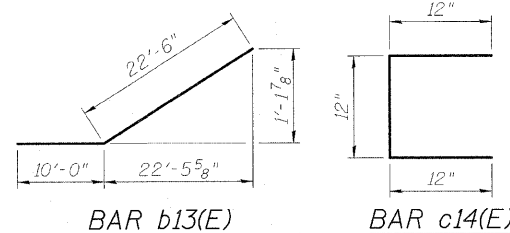
** Slope varies due to superelevation tangent run out. Superelevation transition occurs from Sta. 65+70 to Sta. 66+73.5 and cross-slope transitions from full S.E. (2.0%) to normal crown.

*** Cost included with Concrete Superstructure.

**** Cost included with Reinforcement Bars, Epoxy Coated.

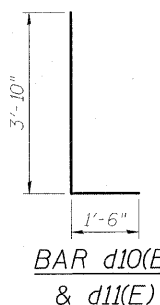
TWO APPROACHES
BILL OF MATERIAL

Bar	No.	Size	Length	Shape
a10(E)	100	#4	24'-9"	
a11(E)	184	#5	25'-0"	
a12(E)	50	#4	25'-5"	
a13(E)	92	#5	25'-8"	
a14(E)	50	#4	26'-7"	
a15(E)	92	#5	26'-10"	
b10(E)	288	#9	29'-9"	
b11(E)	122	#4	29'-8"	
b12(E)	21	#5	31'-2"	
b13(E)	7	#5	32'-6"	
b14(E)	5	#9	17'-5"	
b15(E)	4	#5	17'-5"	
b16(E)	5	#9	19'-11"	
b17(E)	8	#5	18'-10"	
b18(E)	4	#5	16'-5"	
c(E)	65	#5	2'-5"	
c3(E)	93	#5	1'-9"	
c10(E)	56	#5	8'-10"	
c11(E)	43	#5	7'-3"	
c12(E)	15	#5	7'-10"	
c13(E)	19	#5	9'-5"	
c14(E)	29	#5	3'-0"	
d2(E)	16	#4	2'-0"	
d10(E)	39	#4	5'-4"	
d11(E)	39	#6	5'-4"	
d12(E)	36	#4	3'-1"	
d13(E)	36	#6	3'-1"	
e10(E)	64	#4	10'-3"	
t(E)	256	#4	15'-4"	
w(E)	160	#5	25'-0"	
w1(E)	80	#5	25'-8"	
w2(E)	80	#5	26'-10"	
Concrete Superstructure	Cu. Yd.		202.7	
Concrete Structures	Cu. Yd.		60.9	
Reinforcement Bars, Epoxy Coated	Pound		60,290	
Bridge Deck Grooving	Sq. Yd.		324	
Protective Coat	Sq. Yd.		456	

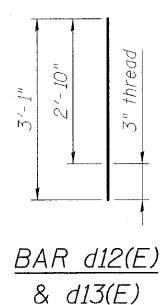


BAR b13(E)

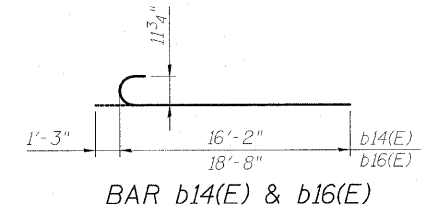
BAR c14(E)



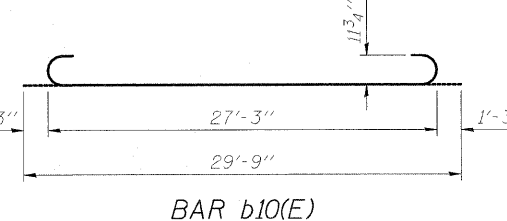
BAR d10(E) & d11(E)



BAR d12(E) & d13(E)



BAR b14(E) & b16(E)



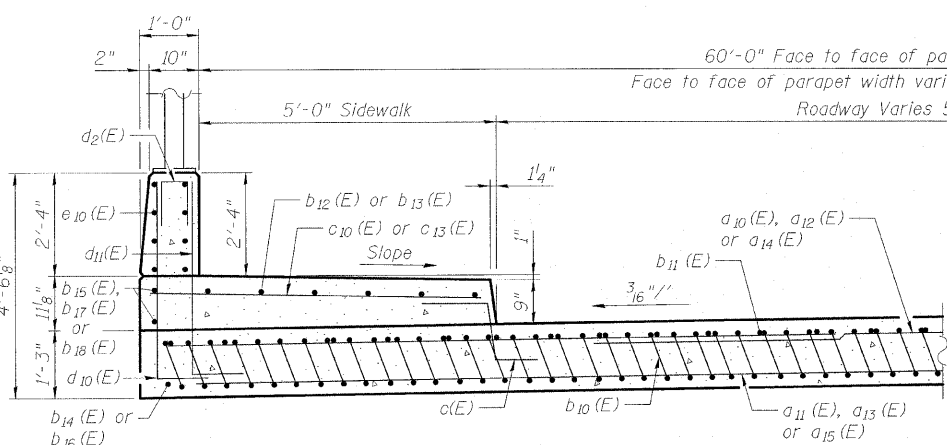
BAR b10(E)

① Bars d12(E) and d13(E) are to be furnished by bar splicer supplier and cost included in the contract unit price for Bar Splicers. See sheet S-34 of S-34 for bar splicer assembly details.

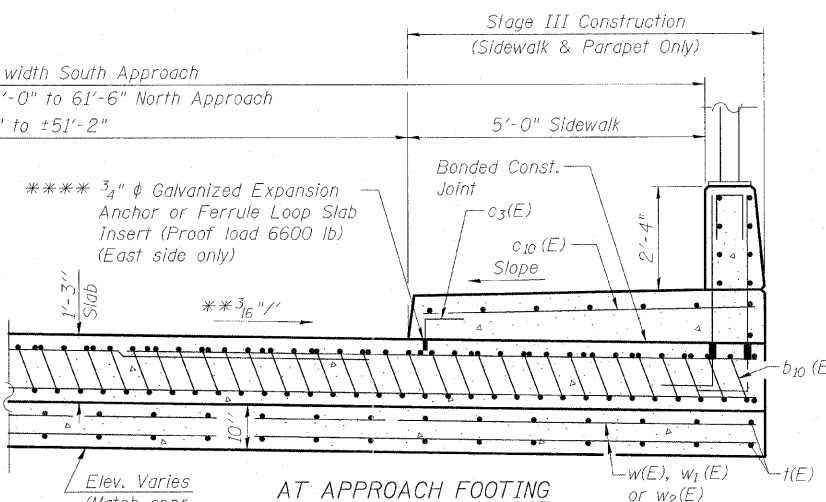
MIN. BAR LAP

#4 bars = 1'-8"
#5 bars = 2'-2"

BRIDGE APPROACH SLAB DETAILS II
STRUCTURE NO. 045-0016



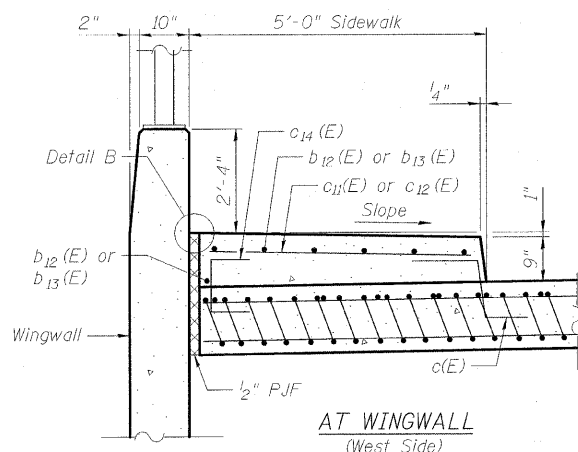
AT END OF WINGWALL



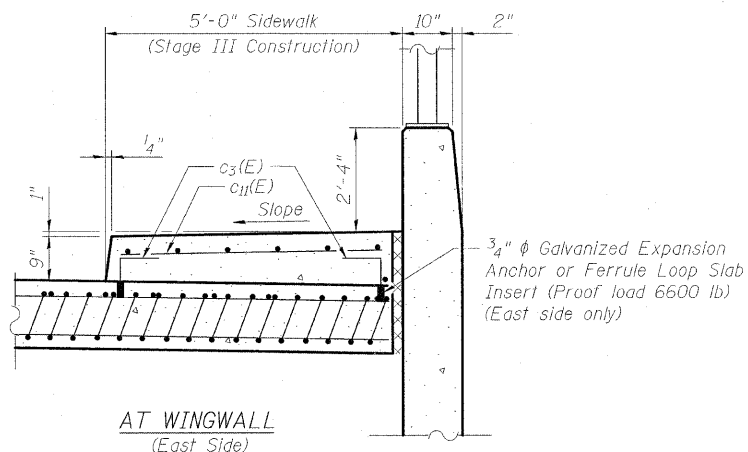
AT APPROACH FOOTING

SECTION D-D

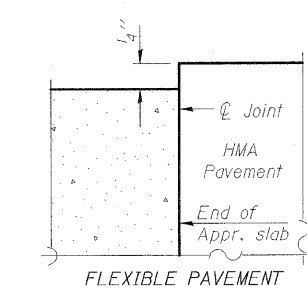
(See Plan for dimensions not shown)



AT WINGWALL (West Side)

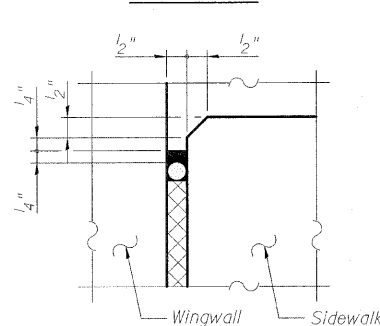


AT WINGWALL (East Side)



FLEXIBLE PAVEMENT

DETAIL A



DETAIL B

DESIGNED - DF
CHECKED - TAH
DRAWN - LAM
CHECKED - DF

BOWMAN, BARRETT & ASSOCIATES INC.
CONSULTING ENGINEERS
Chicago, Illinois
312.228.0100
www.bbandainc.com
Job No. 910

SHEET NO. S-19 S-34 SHEETS	F.A.U. RTE. 3887	SECTION R-VB-R	COUNTY KANE	TOTAL SHEETS 83	SHEET NO. 53
	CONTRACT NO. 60C06				
FED. ROAD DIST. NO. 1 ILLINOIS FED. AID PROJECT					