

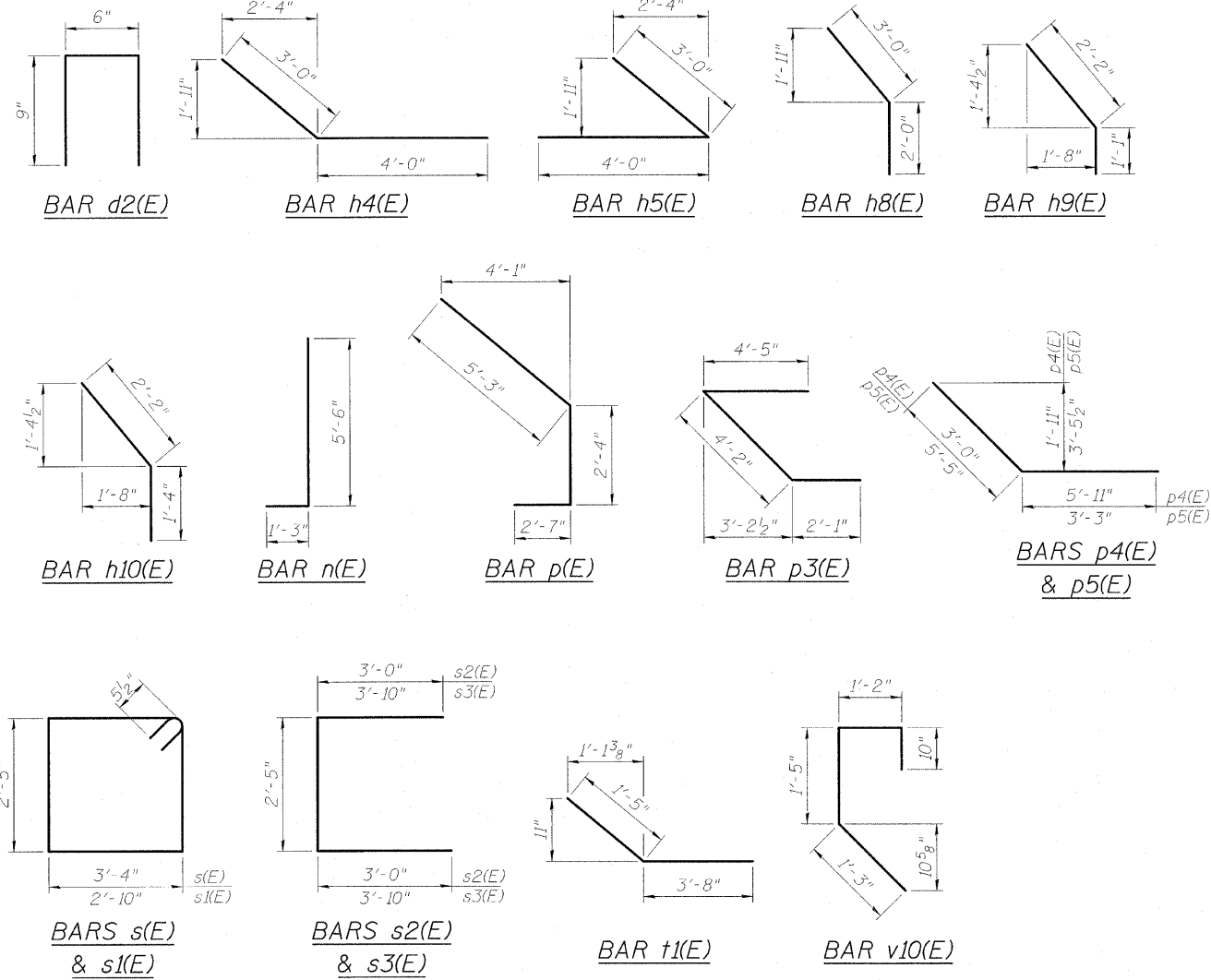
STATE OF ILLINOIS  
DEPARTMENT OF TRANSPORTATION

NORTH ABUTMENT  
BILL OF MATERIAL

SOUTH ABUTMENT  
BILL OF MATERIAL

MIN BAR LAP

- #4 bars = 1'-8"
- #5 bars = 2'-2"
- #6 bars = 2'-7"

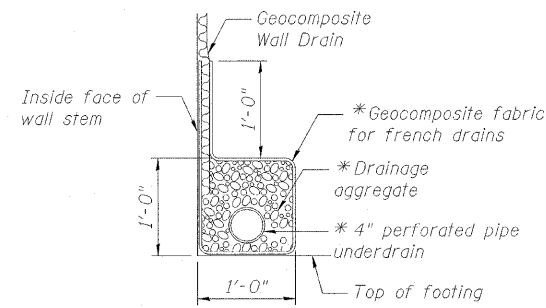


Bar	No.	Size	Length	Shape
d2(E)	10	#4	2'-0"	□
h(E)	12	#6	24'-6"	—
h1(E)	20	#5	24'-6"	—
h2(E)	12	#6	25'-0"	—
h3(E)	20	#5	25'-0"	—
h4(E)	10	#5	7'-0"	↘
h5(E)	14	#5	7'-0"	↘
h6(E)	48	#4	8'-4"	—
h7(E)	56	#4	7'-8"	—
h8(E)	3	#5	5'-0"	↘
h9(E)	4	#5	3'-3"	↘
h10(E)	2	#5	3'-6"	↘
n(E)	52	#5	6'-9"	┘
p(E)	3	#7	10'-2"	↘
p1(E)	5	#7	2'-8"	—
p2(E)	2	#7	3'-3"	—
p3(E)	3	#7	10'-8"	↘
p4(E)	3	#7	8'-11"	↘
p5(E)	2	#7	8'-8"	↘
s(E)	3	#5	12'-5"	□
s1(E)	1	#5	11'-5"	□
s2(E)	2	#5	8'-5"	□
s3(E)	2	#5	10'-1"	□
t(E)	50	#6	4'-8"	—
t1(E)	2	#6	5'-1"	↘
t2(E)	8	#6	3'-2"	—
v(E)	95	#5	2'-7"	—
v1(E)	10	#5	4'-10"	—
v2(E)	88	#5	5'-8"	—
v3(E)	25	#5	5'-2"	—
v4(E)	34	#5	7'-7"	—
v5(E)	17	#5	5'-5"	—
v6(E)	4	#5	8'-2"	—
v7(E)	45	#5	5'-11"	—
v8(E)	29	#5	9'-4"	—
v9(E)	5	#5	8'-10"	—
v10(E)	95	#5	4'-8"	┘
w(E)	12	#5	12'-1"	—
w1(E)	12	#5	17'-0"	—
Porous Granular Embankment, Special	Cu. Yd.	180.1		
Structure Excavation	Cu. Yd.	231		
Concrete Structures	Cu. Yd.	34.8		
Reinforcement Bars, Epoxy Coated	Pound	6620		
Concrete Sealer	Sq. Ft.	392		
Geocomposite Wall Drain	Sq. Yd.	95		
Pipe Underdrains for Structures, 4"	Foot	189.5		

Bar	No.	Size	Length	Shape
d2(E)	8	#4	2'-0"	□
h(E)	12	#6	24'-6"	—
h1(E)	20	#5	24'-6"	—
h2(E)	12	#6	25'-0"	—
h3(E)	20	#5	25'-0"	—
h4(E)	12	#5	7'-0"	↘
h5(E)	12	#5	7'-0"	↘
h6(E)	52	#4	8'-4"	—
h7(E)	52	#4	7'-8"	—
h8(E)	3	#5	5'-0"	↘
h9(E)	4	#5	3'-3"	↘
h10(E)	2	#5	3'-6"	↘
n(E)	50	#5	6'-9"	┘
p(E)	3	#7	10'-2"	↘
p1(E)	5	#7	2'-8"	—
p2(E)	2	#7	3'-3"	—
p3(E)	3	#7	10'-8"	↘
p4(E)	3	#7	8'-11"	↘
p5(E)	2	#7	8'-8"	↘
s(E)	3	#5	12'-5"	□
s1(E)	1	#5	11'-5"	□
s2(E)	2	#5	8'-5"	□
s3(E)	2	#5	10'-1"	□
t(E)	50	#6	4'-8"	—
t1(E)	2	#6	5'-1"	↘
t2(E)	8	#6	3'-2"	—
v(E)	95	#5	2'-7"	—
v1(E)	23	#5	4'-10"	—
v2(E)	88	#5	5'-8"	—
v3(E)	29	#5	5'-2"	—
v4(E)	5	#5	7'-7"	—
v5(E)	41	#5	5'-5"	—
v6(E)	29	#5	8'-2"	—
v9(E)	29	#5	8'-10"	—
v10(E)	95	#5	4'-8"	┘
w1(E)	12	#5	17'-0"	—
w2(E)	12	#5	11'-8"	—
Porous Granular Embankment, Special	Cu. Yd.	169.4		
Structure Excavation	Cu. Yd.	208		
Concrete Structures	Cu. Yd.	38.5		
Reinforcement Bars, Epoxy Coated	Pound	6530		
Concrete Sealer	Sq. Ft.	399		
Geocomposite Wall Drain	Sq. Yd.	96		
Pipe Underdrains for Structures, 4"	Foot	192.5		

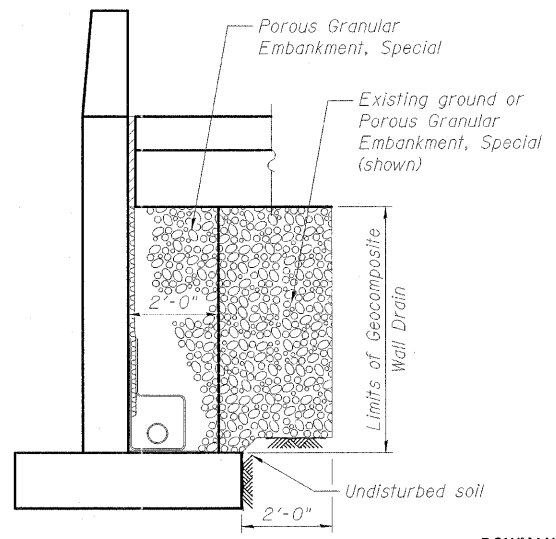
For details of Bar Splicers, see sheet S-34 of S-34.

DESIGNED - TAH
CHECKED - DF
DRAWN - LAM
CHECKED - TAH



PIPE UNDERDRAIN DETAIL

\*Cost included with Pipe Underdrains for Structures 4"



SECTION THRU WINGWALL

BOWMAN, BARRETT & ASSOCIATES INC.  
CONSULTING ENGINEERS  
Chicago, Illinois  
312.228.0100  
www.bbainc.com  
Job No. 910

SHEET NO. S-32 S-34 SHEETS	F.A.U. RTE. 3887	SECTION R-VB-R	COUNTY KANE	TOTAL SHEETS 83	SHEET NO. 66
	CONTRACT NO. 60C06				
FED. ROAD DIST. NO. 1 ILLINOIS FED. AID PROJECT					

ABUTMENT DETAILS II  
STRUCTURE NO. 045-0016