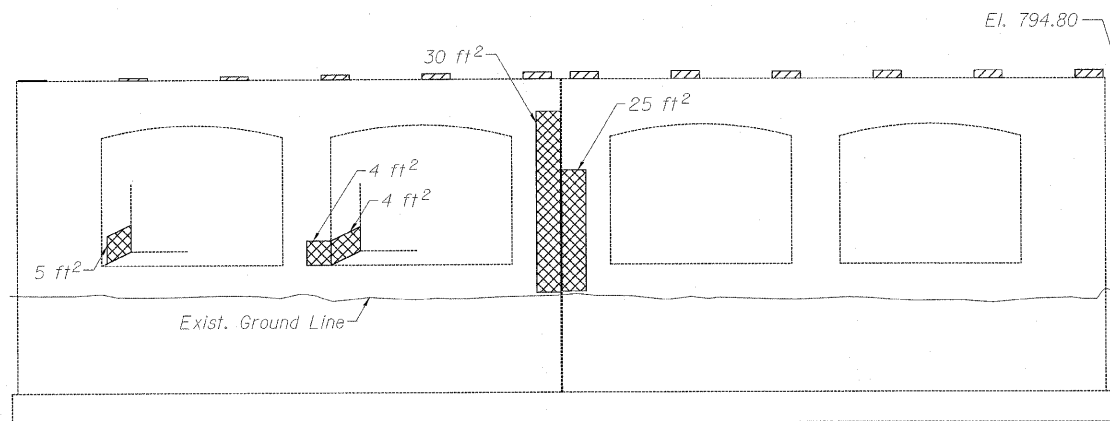


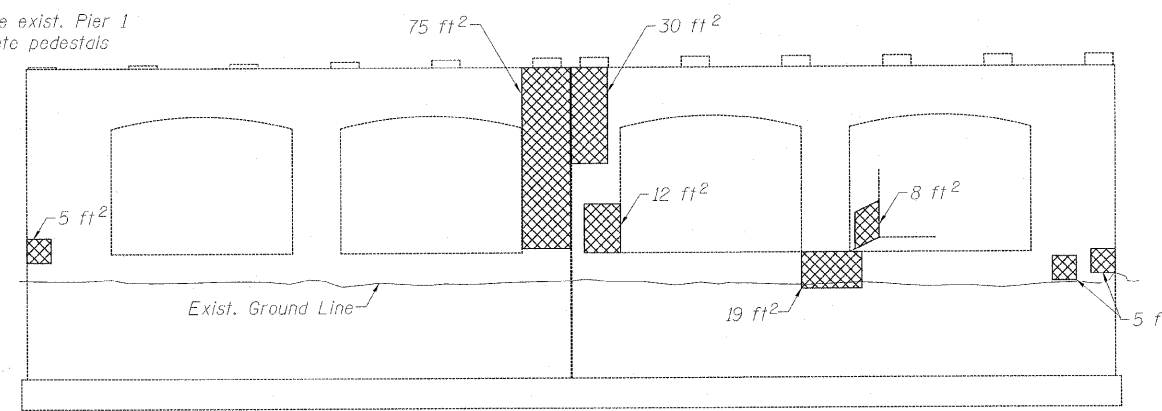
STATE OF ILLINOIS  
DEPARTMENT OF TRANSPORTATION

BILL OF MATERIAL

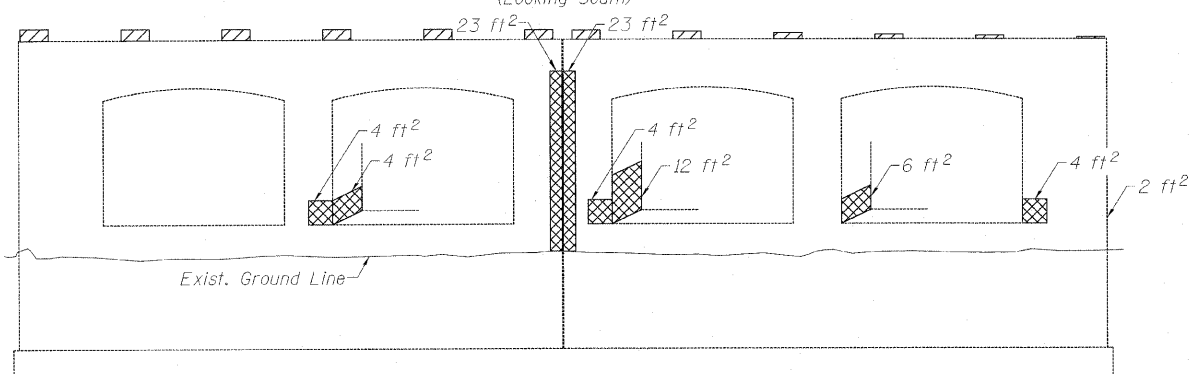
Bar	No.	Size	Length	Shape
d30(E)	48	#5	4'-4"	□
s30(E)	30	#5	10'-5"	□
s31(E)	6	#5	9'-11"	□
v30(E)	10	#5	2'-0"	—
v31(E)	10	#5	2'-1"	—
v32(E)	10	#5	2'-3"	—
v33(E)	10	#5	2'-4"	—
v34(E)	10	#5	2'-5"	—
v35(E)	10	#5	2'-6"	—
v36(E)	60	#5	2'-7"	—
Concrete Removal			Cu. Yd.	1.2
Concrete Structures			Cu. Yd.	6.1
Reinforcement Bars, Epoxy Coated			Pound	910
Structural Repair of Concrete (Depth equal to or less than 5 Inches)			Sq. Ft.	347
Epoxy Crack Injection			Foot	10



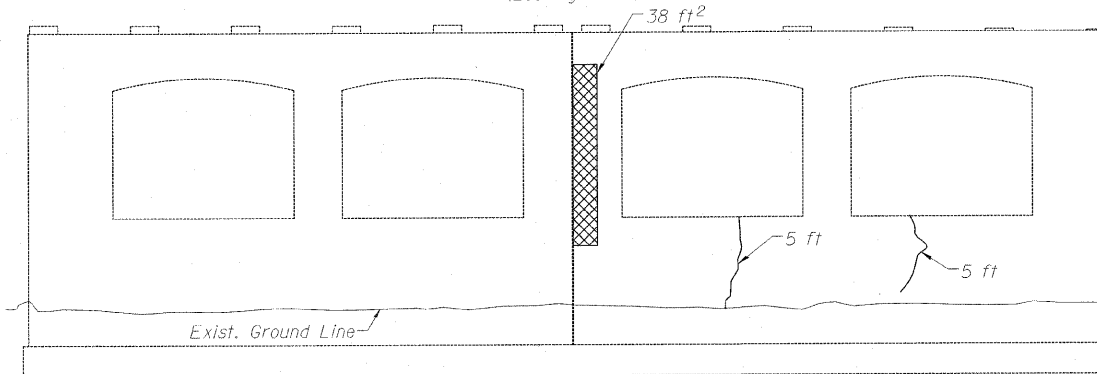
NORTH FACE PIER 1  
(Looking South)



NORTH FACE PIER 2  
(Looking South)



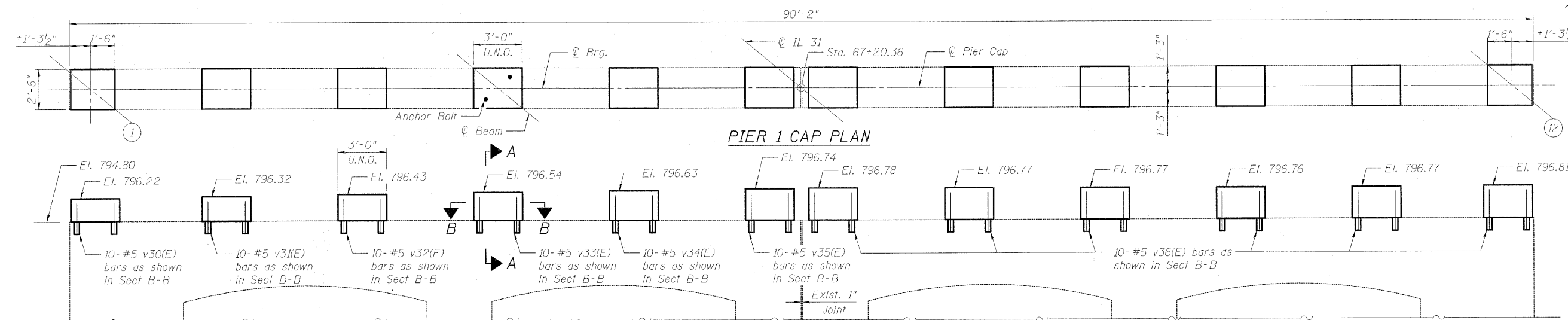
SOUTH FACE PIER 1  
(Looking North)



SOUTH FACE PIER 2  
(Looking North)

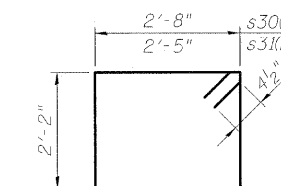
LEGEND

- Concrete Removal
- Structural Repair of Concrete (Depth equal to or less than 5 Inches)
- Epoxy Crack Injection

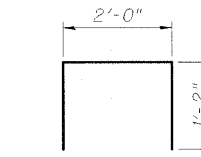


PIER 1 CAP PLAN

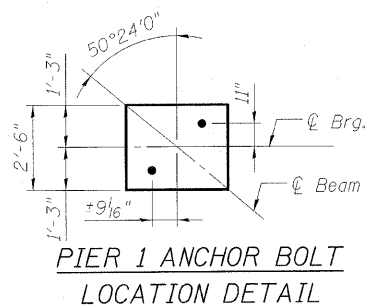
PIER 1 CAP ELEVATION  
(Looking North)



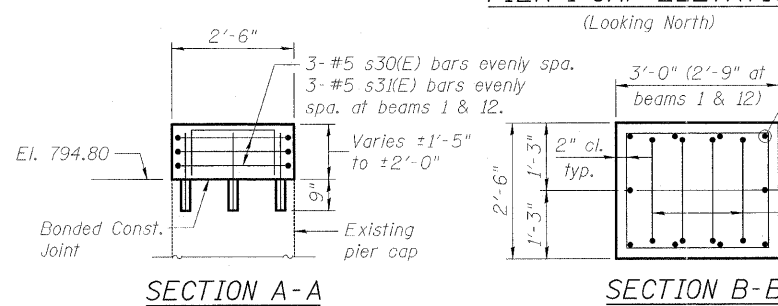
BARS s30(E)  
& s31(E)



BAR d30(E)



PIER 1 ANCHOR BOLT  
LOCATION DETAIL



SECTION A-A

SECTION B-B

DESIGNED - DF
CHECKED - TL
DRAWN - LAM
CHECKED - DF

Note:  
Space reinforcement to miss anchor bolts.

BOWMAN, BARRETT & ASSOCIATES INC.  
CONSULTING ENGINEERS  
Chicago, Illinois  
312.228.0100  
www.bbainc.com  
Job. No. 910

SHEET NO. S-33 S-34 SHEETS	F.A.U. RTE. 3887	SECTION R-VB-R	COUNTY KANE	TOTAL SHEETS 83	SHEET NO. 67
	CONTRACT NO. 60C06				
FED. ROAD DIST. NO. 1 ILLINOIS FED. AID PROJECT					

PIER REPAIRS &  
PIER 1 CAP MODIFICATION  
STRUCTURE NO. 045-0016