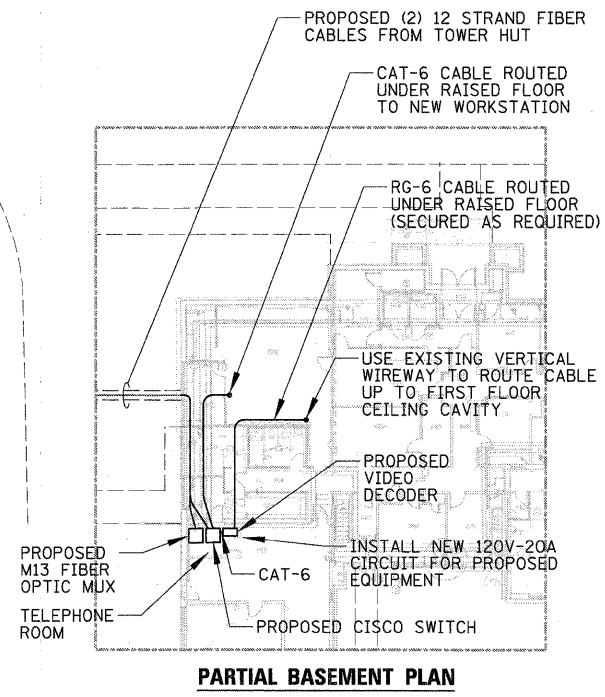
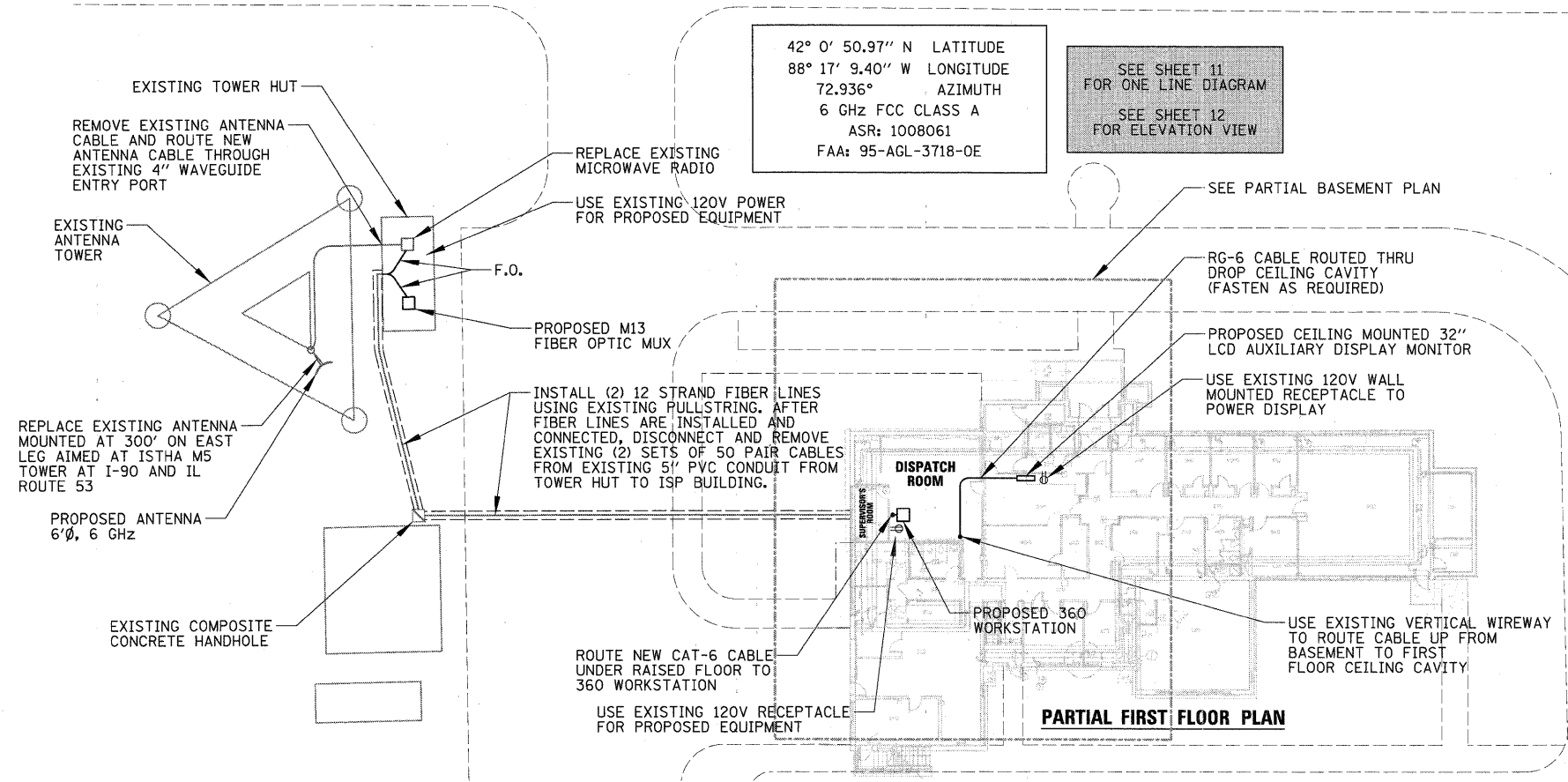
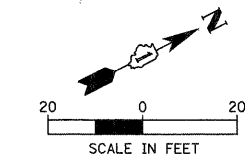


### SCOPE OF WORK

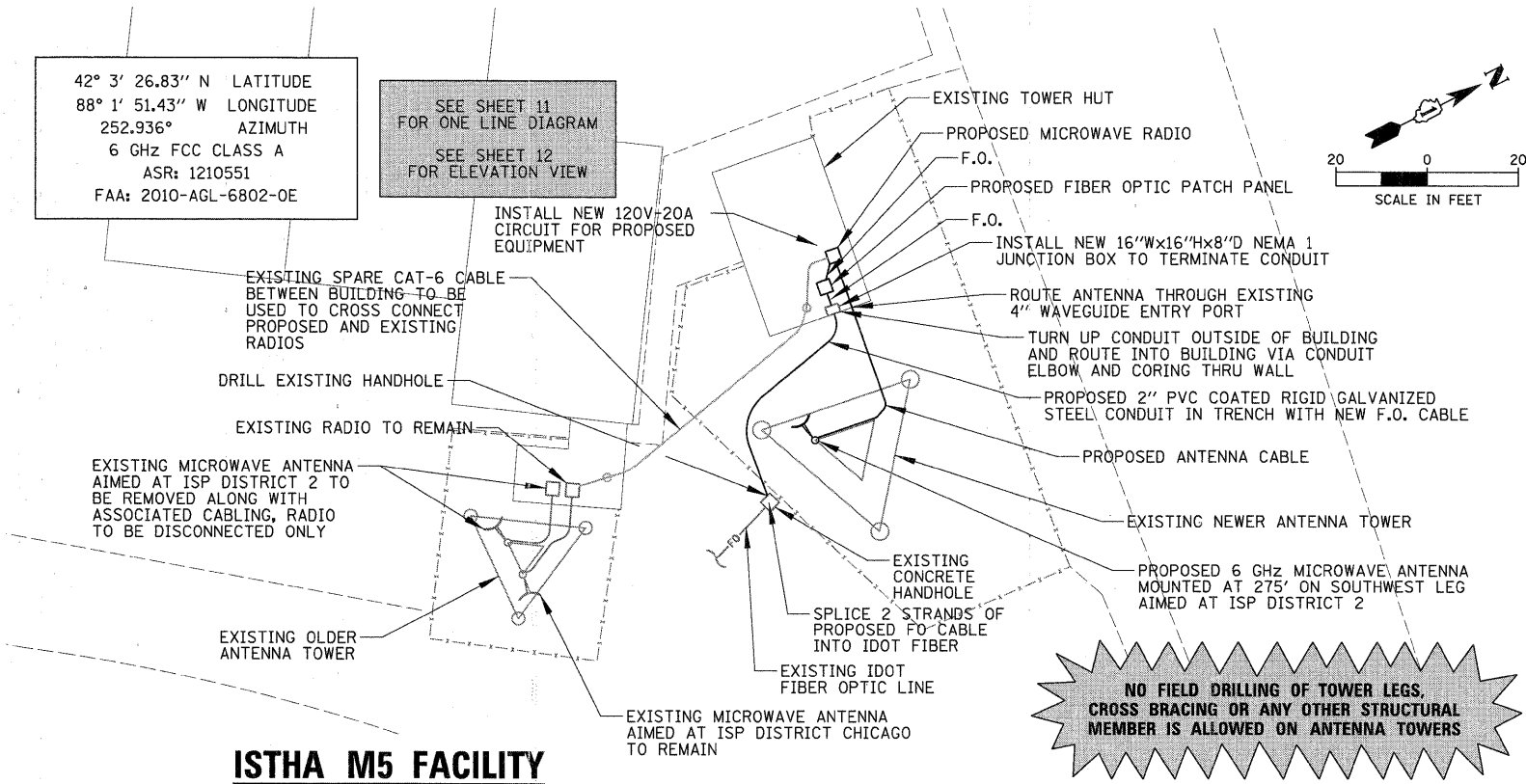
- ISP DISTRICT 2 (ELGIN) AND ISTHA M5 FACILITY (SCHAUMBURG) ARE CONNECTED VIA MICROWAVE LINK. THE EXISTING LINK SHALL BE UPGRADED WITH NEW RADIOS, ANTENNAS, AND CABLES. OUTAGE TO LINK SHALL NOT EXCEED 48 HOURS. THE EXISTING VIDEO SIGNAL FOR IDOT'S TRAFFIC CAMERAS SHALL BE ADDED TO THE MICROWAVE LINK. CONTRACTOR SHALL COORDINATE, FURNISH, AND INSTALL REQUIRED EQUIPMENT FOR THE ISP DISTRICT 2 TO VIEW VIDEO FROM UP TO 4 OF ANY OF IDOT'S TRAFFIC CAMERAS THRU LINK.
- THE EXISTING TOWER AT ISP DISTRICT 2 SHALL BE REINFORCED TO ACCOMMODATE THE PROPOSED UPGRADES
- THE EXISTING COPPER LINES FROM THE TOWER HUT TO THE ISP DISTRICT 2 BUILDING SHALL BE REPLACED WITH FIBER. THE EXISTING (1) ISP T1 LINE AND (4) STARCOM T1 LINES SHALL BE CONVERTED TO FIBER WITH A M13 FIBER OPTIC MUX IN THE HUT AND DECONVERTED BACK TO T1 LINES WITH MATCHING MUX IN BUILDING. OUTAGE TO STARCOM SYSTEM DURING CONSTRUCTION SHALL NOT EXCEED 15 MINUTES.



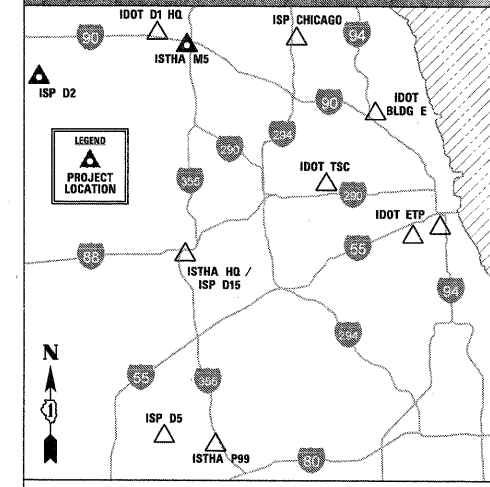
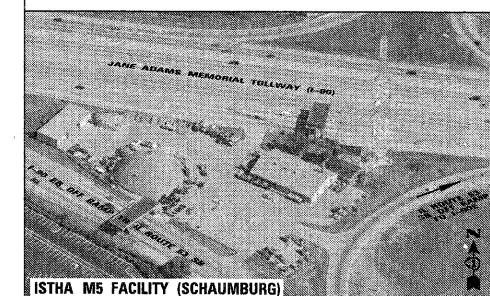
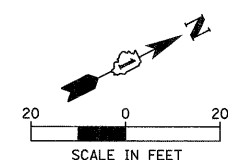
### ISP DISTRICT 2 (ELGIN)

### SPECIAL NOTES FOR WORK AT M5 LOCATION

- PRIOR TO THE COMMENCEMENT OF ANY UNDERGROUND WORK, PLEASE CONTACT THE ILLINOIS TOLLWAY'S ENGINEERING UTILITY PERMIT DIVISION. PLEASE NOTE THAT J.U.L.I.E LOCATION OF BURIED UTILITIES DOES NOT INCLUDE ISTHA BURIED FACILITIES AND THAT ENGINEERING UTILITY PERMIT DIVISION NEEDS TO BE CONTACTED A MINIMUM OF FOUR BUSINESS DAYS PRIOR TO UNDERGROUND WORK TO OBTAIN AND SUBMIT AN ONLINE ISTHA A-36 FORM, AT: WWW.ILLINOISVIRTUALTOLLWAY/UTILITYLOCATES.
- EXISTING VERTICAL WAVEGUIDE LADDERS MAY NOT BE UTILIZED TO MOUNT NEW COAXIAL CABLE OR WAVEGUIDE. A NEW VWGL SHALL BE MOUNTED, ALONG A LEG AGREED UPON BY THE ILLINOIS TOLLWAY (THE EDGE OF THE VERTICAL LADDER SHOULD BE NO CLOSER THAN ONE FOOT FROM THE ADJACENT EDGE OF THE TOWER LEG). THE VWGL SHALL BE ATTACHED TO THE TOWER WITHOUT DRILLING, UTILIZING "J-HOOKS" OR "J-PLATES." CATEGORY 5 CABLE (IN INSTANCES OF WIRELESS BROADBAND LEASING) MAY BE RUN ALONG THE SIDE OF THE VWGL, AS DIRECTED BY THE ILLINOIS TOLLWAY I.T. DEPARTMENT.
- WAVEGUIDE SHALL BE RUN UPWARD ON VWGL TO EITHER A TOWER CROSS-MEMBER DIRECTLY DIAGONAL TO THE PLANNED ANTENNAS AND/OR (IN INSTANCES WITH SECTOR ANTENNAS) ALSO LEAVING THE VERTICAL LADDER AND RUNNING ALONG AN X BRACE UPWARD TO ANTENNAS ON OTHER TOWER SIDES.
- THE ANTENNA HEIGHT SHOWN IS "CENTER LINE," NOT TO TOP OR BOTTOM OF THE ARRAY. THIS HEIGHT IS SET BY THE ILLINOIS TOLLWAY I.T. DEPARTMENT AT INITIAL SITE MEETINGS AND MAY NOT BE ADJUSTED AT ANY TIME WITHOUT WRITTEN PERMISSION FROM SAID DEPARTMENT.
- ALL UNDERGROUND ELECTRICAL CONDUIT SHALL BE UL LISTED PVC COATED RIGID GALVANIZED.



### ISTHA M5 FACILITY



**CHRISTOPHER B. BURKE ENGINEERING, LTD.**  
 9575 W. Higgins Road, Suite 600  
 Rosemont, Illinois 60018  
 (847) 823-0500

FILE NAME =	USER NAME = ADERICCO	DESIGNED = AJD	REVISED = -
N:\Idot\090122\Mech\090122_ISPD2_PLN_01.dwg		DRAWN = KWB	REVISED = -
	PLOT SCALE = 20'	CHECKED = JPC	REVISED = -
	PLOT DATE = 5/12/2011	DATE = 5/12/2011	REVISED = -

STATE OF ILLINOIS  
 DEPARTMENT OF TRANSPORTATION

ITS CENTER-TO-CENTER INTEGRATION PROJECT			
ISP DISTRICT 2 (ELGIN) / ISTHA M5 FACILITY (SCHAUMBURG)			
SCALE: AS SHOWN	SHEET NO.	OF SHEETS	STA. TO STA.

F.A. RTE.	SECTION	COUNTY	TOTAL SHEETS	SHEET NO.
	2009-0871	VARIES	17	5
CONTRACT NO. 60I34				
ILLINOIS FED. AID PROJECT				