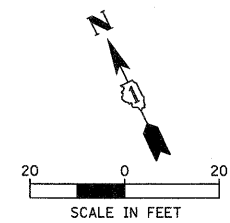
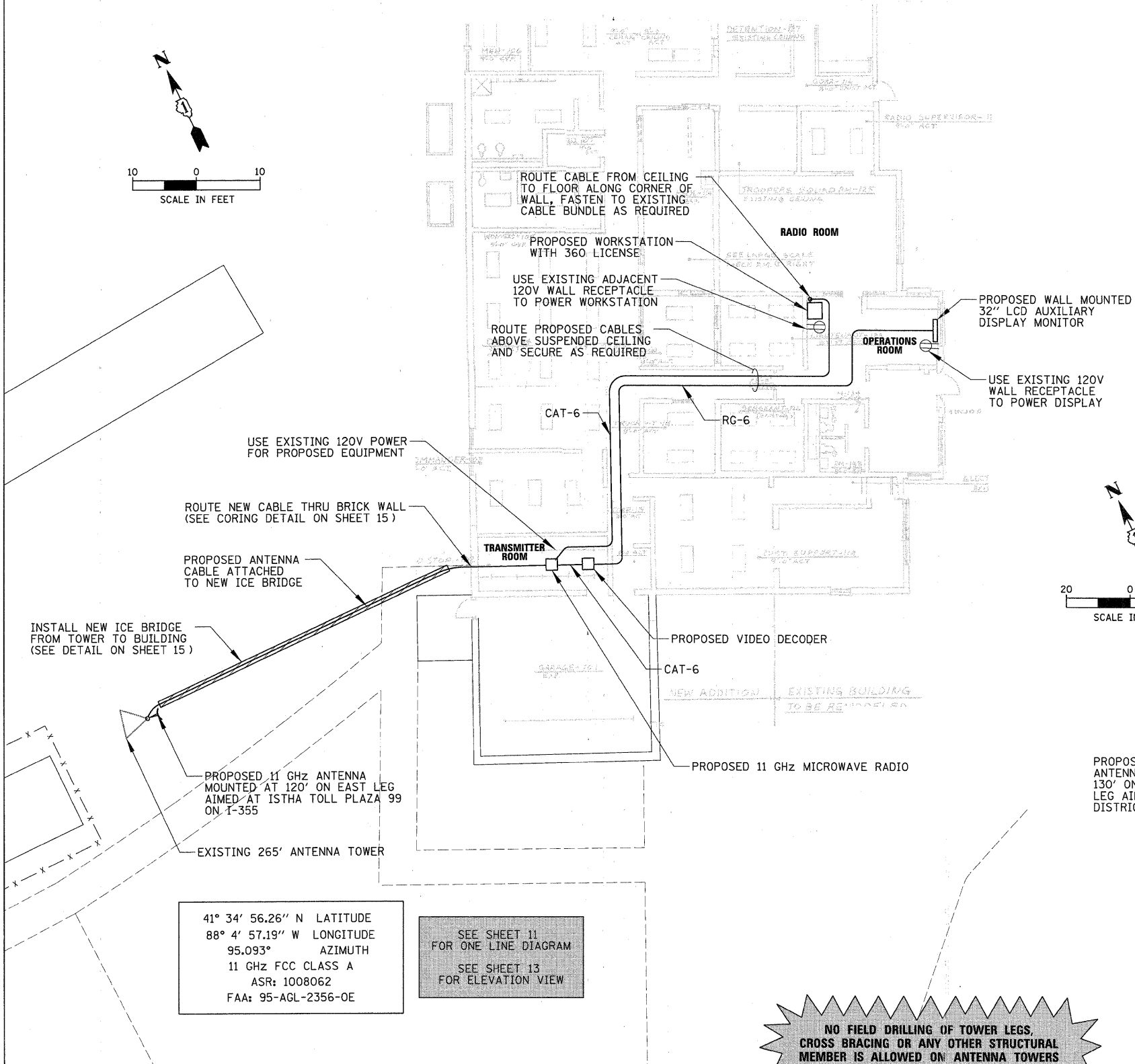
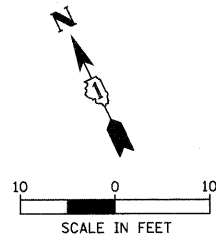


SPECIAL NOTES FOR WORK AT PLAZA 99 LOCATION

1. PRIOR TO THE COMMENCEMENT OF ANY UNDERGROUND WORK, PLEASE CONTACT THE ILLINOIS TOLLWAY'S ENGINEERING UTILITY PERMIT DIVISION. PLEASE NOTE THAT J.U.L.I.E LOCATION OF BURIED UTILITIES DOES NOT INCLUDE ISTHA BURIED FACILITIES AND THAT ENGINEERING UTILITY PERMIT DIVISION NEEDS TO BE CONTACTED A MINIMUM OF FOUR BUSINESS DAYS PRIOR TO UNDERGROUND WORK TO OBTAIN AND SUBMIT AN ONLINE ISTHA A-36 FORM. AT: WWW.ILLINOISVIRTUALTOLLWAY/UTILITYLOCATES.
2. EXISTING VERTICAL WAVEGUIDE LADDERS MAY NOT BE UTILIZED TO MOUNT NEW COAXIAL CABLE OR WAVEGUIDE. A NEW VWGL SHALL BE MOUNTED, ALONG A LEG AGREED UPON BY THE ILLINOIS TOLLWAY (THE EDGE OF THE VERTICAL LADDER SHOULD BE NO CLOSER THAN ONE FOOT FROM THE ADJACENT EDGE OF THE TOWER LEG). THE VWGL SHALL BE ATTACHED TO THE TOWER WITHOUT DRILLING, UTILIZING "J-HOOKS" OR "J-PLATES." CATEGORY 5 CABLE (IN INSTANCES OF WIRELESS BROADBAND LEASING) MAY BE RUN ALONG THE SIDE OF THE VWGL, AS DIRECTED BY THE ILLINOIS TOLLWAY I.T. DEPARTMENT.
3. WAVEGUIDE SHALL BE RUN UPWARD ON VWGL TO EITHER A TOWER CROSS-MEMBER DIRECTLY DIAGONAL TO THE PLANNED ANTENNAS AND/OR (IN INSTANCES WITH SECTOR ANTENNAS) ALSO LEAVING THE VERTICAL LADDER AND RUNNING ALONG AN X BRACE UPWARD TO ANTENNAS ON OTHER TOWER SIDES.
4. THE ANTENNA HEIGHT SHOWN IS "CENTER LINE," NOT TO TOP OR BOTTOM OF THE ARRAY. THIS HEIGHT IS SET BY THE ILLINOIS TOLLWAY I.T. DEPARTMENT AT INITIAL SITE MEETINGS AND MAY NOT BE ADJUSTED AT ANY TIME WITHOUT WRITTEN PERMISSION FROM SAID DEPARTMENT.
5. ALL UNDERGROUND ELECTRICAL CONDUIT SHALL BE UL LISTED PVC COATED RIGID GALVANIZED.

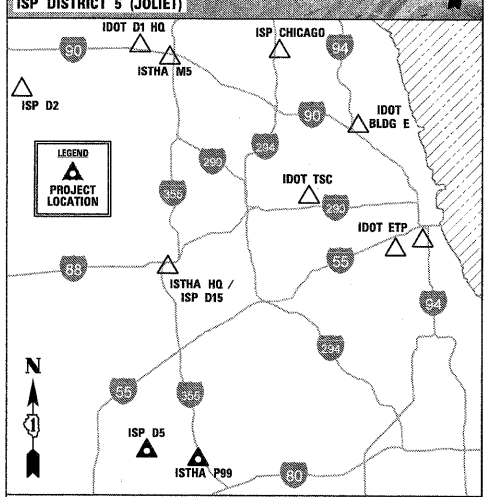
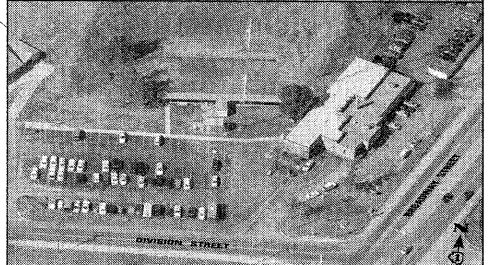
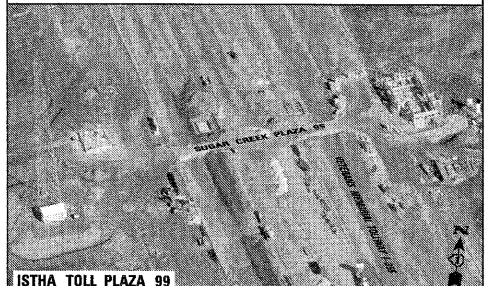
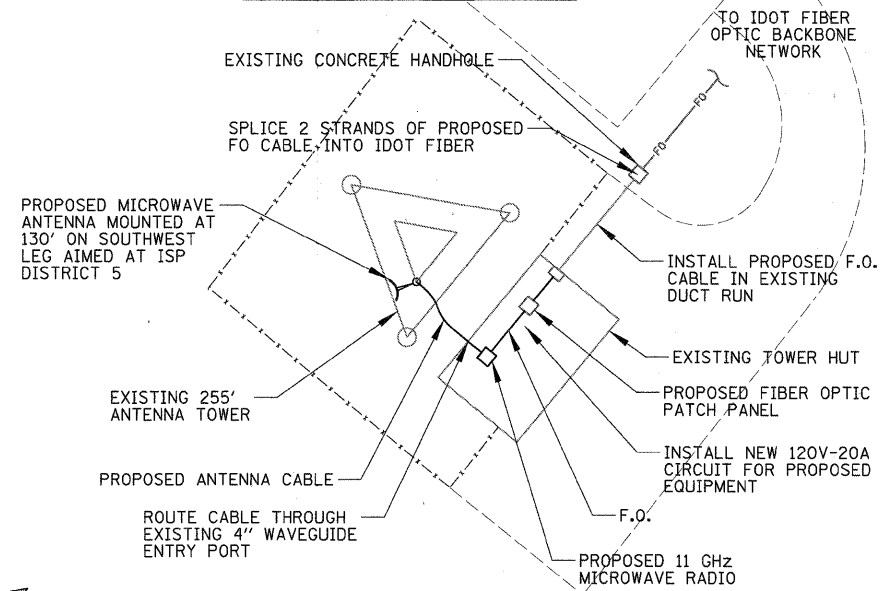
SCOPE OF WORK

1. INSTALL NEW LICENSED MICROWAVE LINK BETWEEN ISP DISTRICT 5 AND ISTHA TOLL PLAZA 99. CONTRACTOR SHALL COORDINATE, FURNISH, AND INSTALL ALL REQUIRED EQUIPMENT FOR THE ISP DISTRICT 5 TO VIEW VIDEO FROM UP TO 4 OF ANY OF IDOT'S TRAFFIC CAMERAS THRU LINK.
2. THE EXISTING TOWER AT ISP DISTRICT 5 SHALL BE REINFORCED TO ACCOMMODATE THE PROPOSED UPGRADES
3. A NEW WAVEGUIDE ICE BRIDGE SHALL BE INSTALLED BETWEEN TOWER AND ISP DISTRICT 5 BUILDING TO SUPPORT EXISTING AND PROPOSED CABLES.



41° 34' 35.79" N LATITUDE
88° 0' 1.88" W LONGITUDE
275.093° AZIMUTH
11 GHz FCC CLASS A
ASR: 1254899
FAA: 2005-AGL-5064-OE

SEE SHEET 11
FOR ONE LINE DIAGRAM
SEE SHEET 13
FOR ELEVATION VIEW



ISP DISTRICT 5 (JOLIET)

ISTHA TOLL PLAZA 99 (I-355)

FILE NAME =	USER NAME = ADERICCO	DESIGNED = AJD	REVISED = -
N:\dot\090122\Mech\090122_ISPD5_PLN_01.dwg		DRAWN = KWB	REVISED = -
	PLOT SCALE = 1/8"	CHECKED = JPC	REVISED = -
	PLOT DATE = 5/12/2011	DATE = 5/12/2011	REVISED = -

**STATE OF ILLINOIS
DEPARTMENT OF TRANSPORTATION**

**ITS CENTER-TO-CENTER INTEGRATION PROJECT
ISP DISTRICT 5 (JOLIET) / ISTHA TOLL PLAZA 99 (I-355)**

SCALE: AS SHOWN SHEET NO. OF SHEETS STA. TO STA.

CB	CHRISTOPHER B. BURKE ENGINEERING, LTD.			
	9575 W. HIGGINS ROAD, SUITE 600 ROSEMONT, ILLINOIS 60018 (847) 823-0500			
F.A. RTE.	SECTION	COUNTY	TOTAL SHEETS	SHEET NO.
	2009-0871	VARIES	17	6
CONTRACT NO. 60134				
ILLINOIS FED. AID PROJECT				