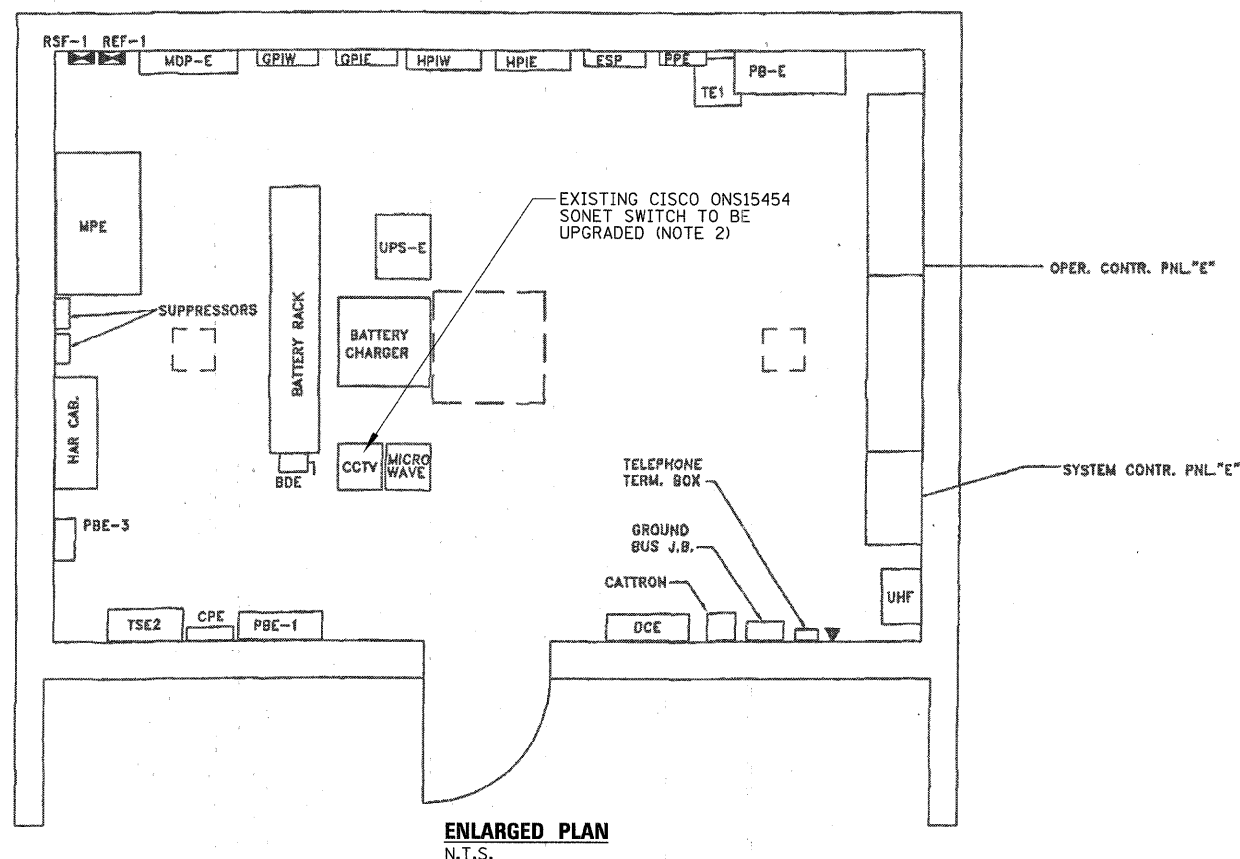
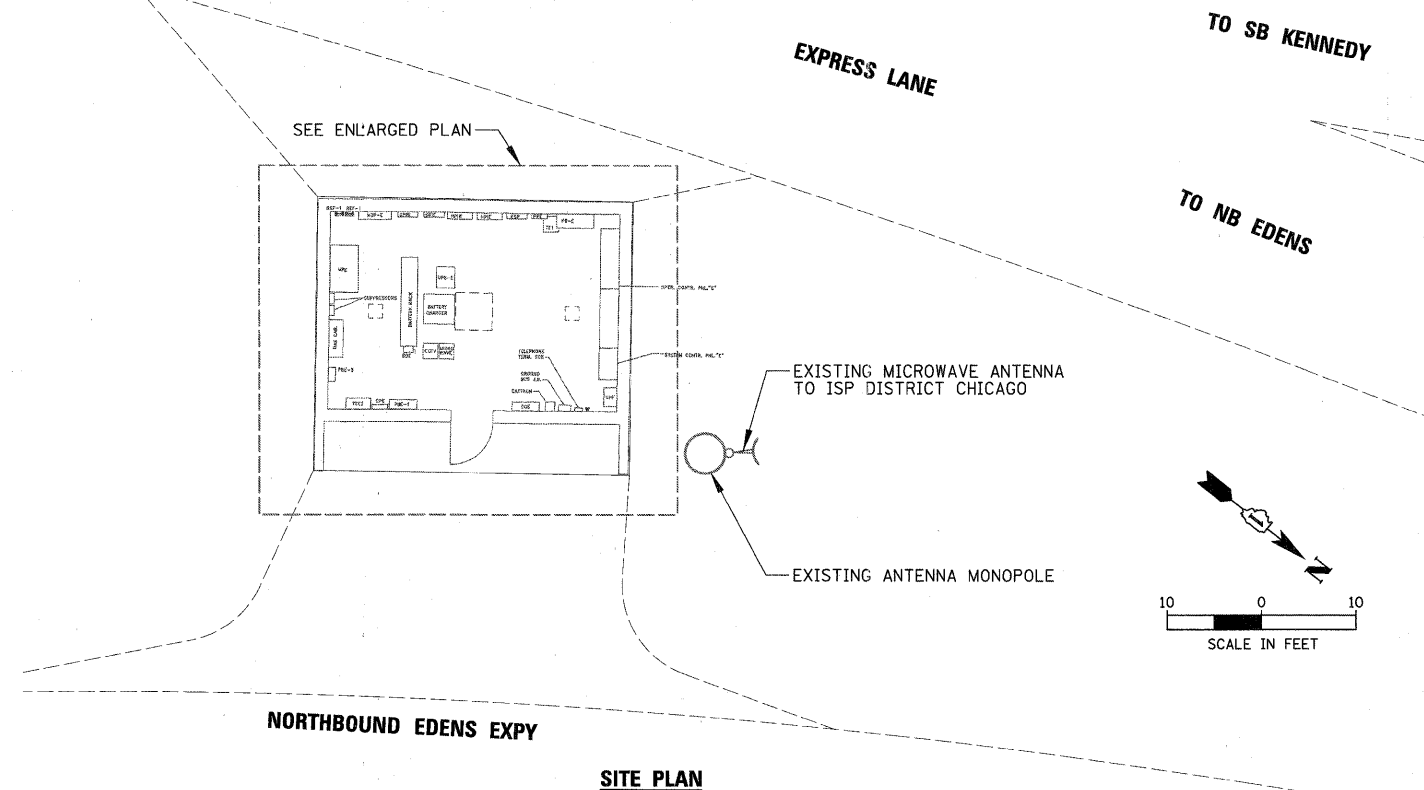
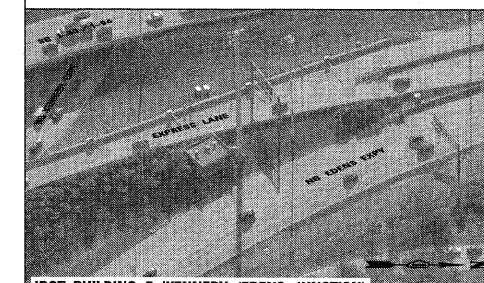


### SCOPE OF WORK

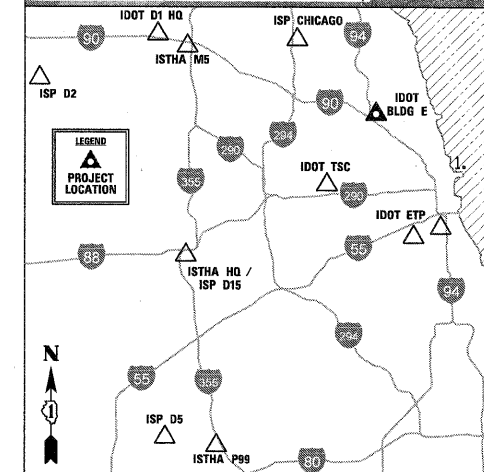
1. AT IDOT BUILDING E, THE CONTRACTOR SHALL COORDINATE, FURNISH, AND INSTALL ALL REQUIRED EQUIPMENT TO COMPLETE THE EXISTING SONET NODE. THE SONET NODE SHALL BE UPGRADED TO AUTOMATIC PATH SWITCHOVER FROM MICROWAVE (PRIMARY MODE) TO FIBER AND VICE VERSA WHEN ACTIVE PATH EXPERIENCES AN OUTAGE. SEE SPECIAL PROVISION FOR DETAILS.



**IDOT BUILDNG E (KENNEDY / EDENS)**



**IDOT BUILDING E (KENNEDY / EDENS JUNCTION)**



**CHRISTOPHER B. BURKE ENGINEERING, LTD.**  
 9575 W. Higgins Road, Suite 600  
 Rosemont, Illinois 60018  
 (847) 823-0500

FILE NAME = N:\idot\090122\Mech\090122.IDOTBE.PLN.01.sht	USER NAME = ADERICCO	DESIGNED <i>AJD</i>	REVISED -
		DRAWN <i>KWB</i>	REVISED -
		CHECKED <i>JPC</i>	REVISED -
		DATE <i>5/12/2011</i>	REVISED -

**STATE OF ILLINOIS  
 DEPARTMENT OF TRANSPORTATION**

**ITS CENTER-TO-CENTER INTEGRATION PROJECT  
 IDOT BUILDING E (KENNEDY / EDENS)**

SCALE: AS SHOWN SHEET NO. OF SHEETS STA. TO STA.

F.A. RTE.	SECTION	COUNTY	TOTAL SHEETS	SHEET NO.
	2009-0871	VARIES	17	10
CONTRACT NO. 60134				
ILLINOIS FED. AID PROJECT				