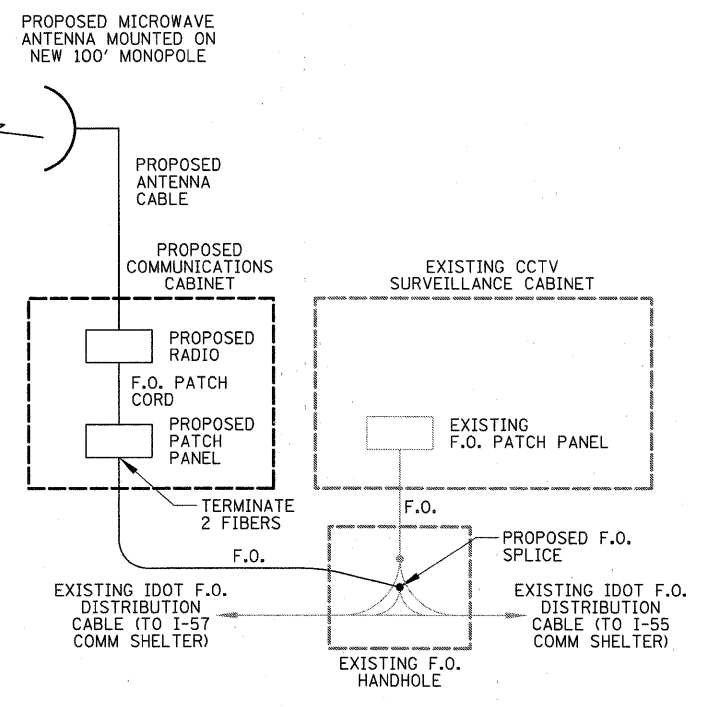
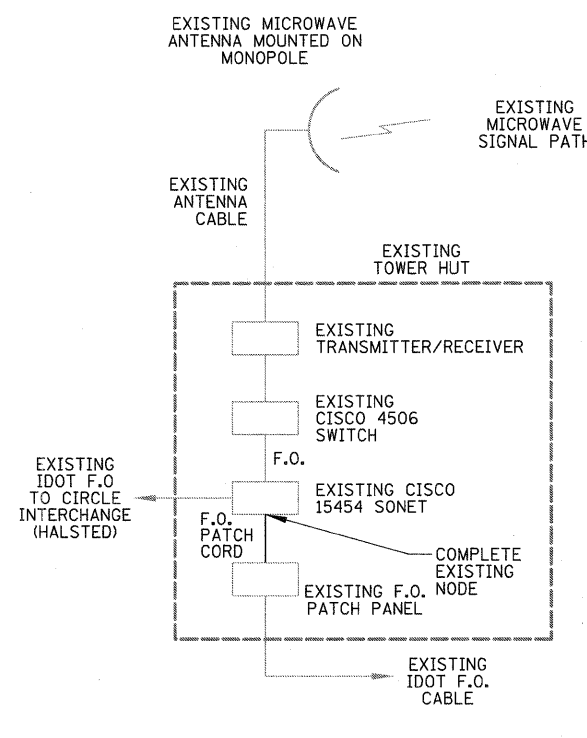


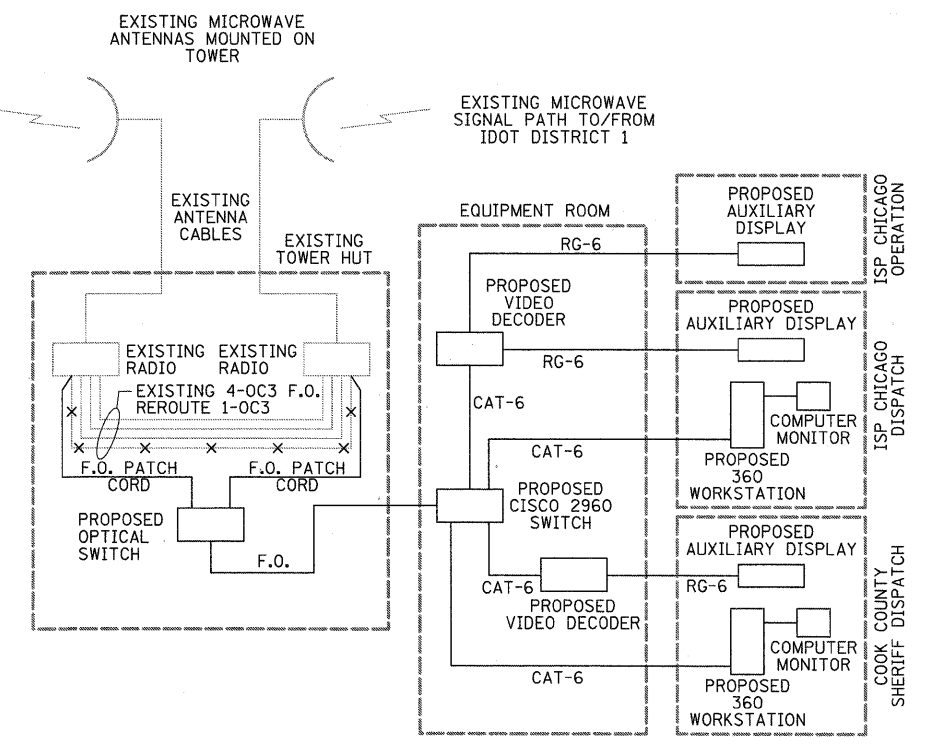
**IDOT ETP BUILDING (35TH & NORMAL)**



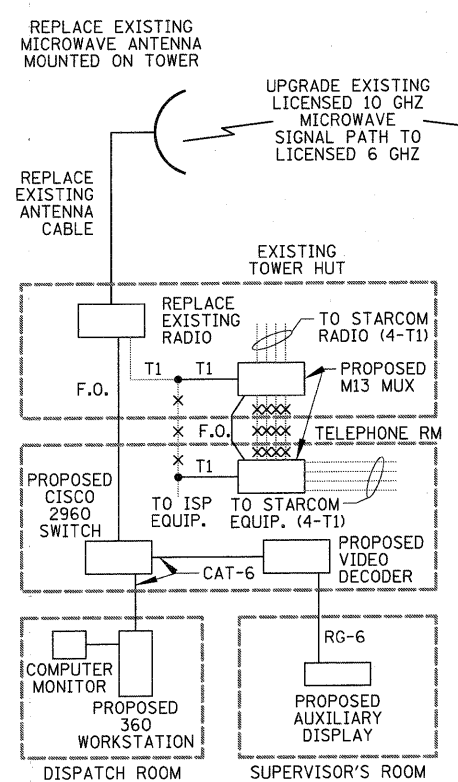
**DAN RYAN EXPY / W. 33TH ST.**



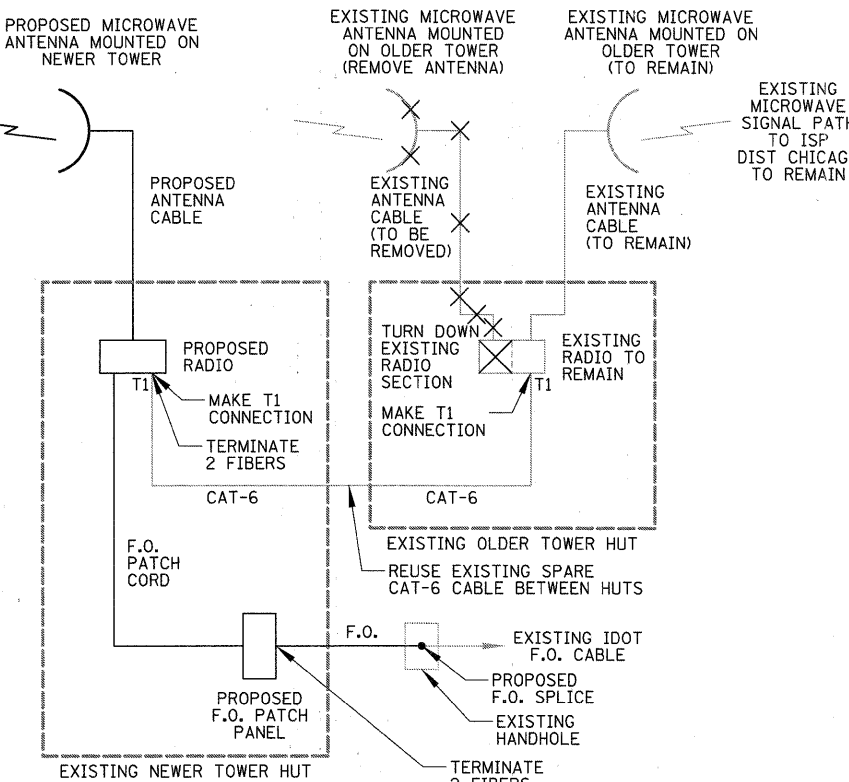
**BUILDING E (KENNEDY / EDENS EXPY)**



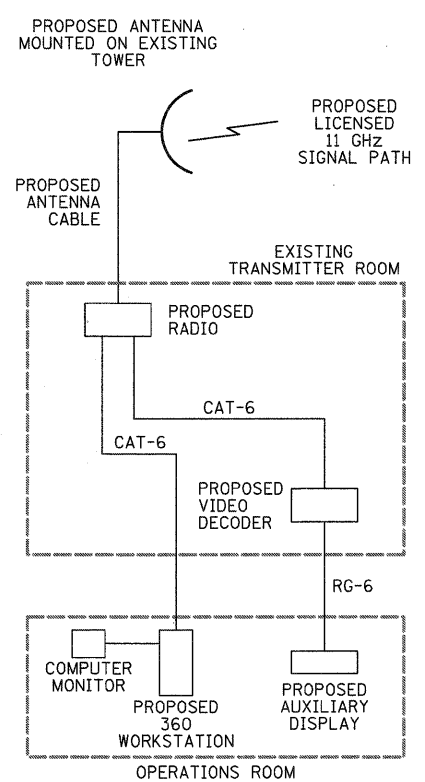
**ISP CHICAGO / COOK COUNTY SHERIFF**



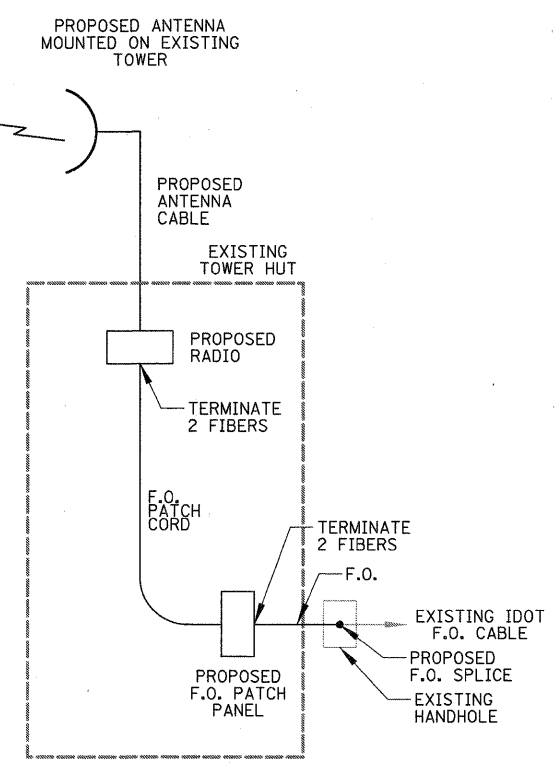
**ISP DISTRICT 2 (ELGIN)**



**ISTHA M5 FACILITY (I-90 / IL ROUTE 53)**

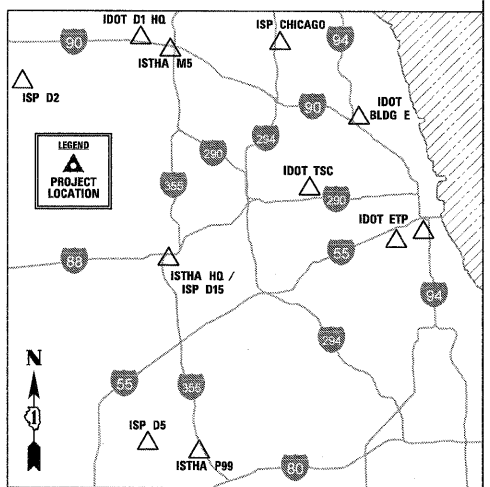


**ISP DISTRICT 5 (JOLIET)**



**ISTHA PLAZA 99 (I-355)**

EXISTING CONDITIONS SHOWN IN HALF TONE  
PROPOSED CONDITIONS SHOWN IN BOLD



**CHRISTOPHER B. BURKE ENGINEERING, LTD.**  
9575 W. Higgins Road, Suite 600  
Rosemont, Illinois 60018  
(847) 823-0500

FILE NAME =	USER NAME = ADERICCO	DESIGNED <i>AJD</i>	REVISED -
N:\dot\090122\Mech\090122_OneLine_LDT_01.sht		DRAWN <i>KWB</i>	REVISED -
	PLOT SCALE = 10'	CHECKED <i>JPC</i>	REVISED -
	PLOT DATE = 5/12/2011	DATE <i>5/12/2011</i>	REVISED -

**STATE OF ILLINOIS  
DEPARTMENT OF TRANSPORTATION**

**ITS CENTER-TO-CENTER INTEGRATION PROJECT  
ONE LINE DIAGRAMS**

SCALE: N.T.S. SHEET NO. OF SHEETS STA. TO STA.

F.A. RTE.	SECTION	COUNTY	TOTAL SHEETS	SHEET NO.
	2009-0871	VARIES	17	11
CONTRACT NO. 60134			ILLINOIS FED. AID PROJECT	