

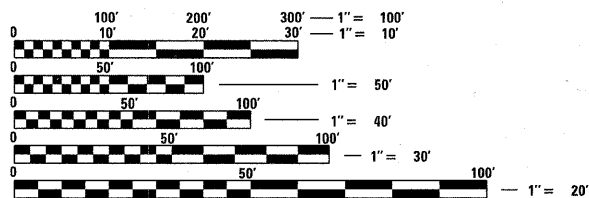
STATE OF ILLINOIS
DEPARTMENT OF TRANSPORTATION
DIVISION OF HIGHWAYS

**PROPOSED
HIGHWAY PLANS**

FAP 341 (IL ROUTE 72)
AT RANDALL ROAD
SECTION: 62-N-1
INTERSECTION IMPROVEMENT AND
TRAFFIC SIGNAL MODERNIZATION
PROJECT: HSIP-0341(054)
KANE COUNTY
C-91-402-10

FOR INDEX OF SHEETS, SEE SHEET NO. 2

THE PROJECT IS LOCATED
IN THE CITY OF ELGIN.

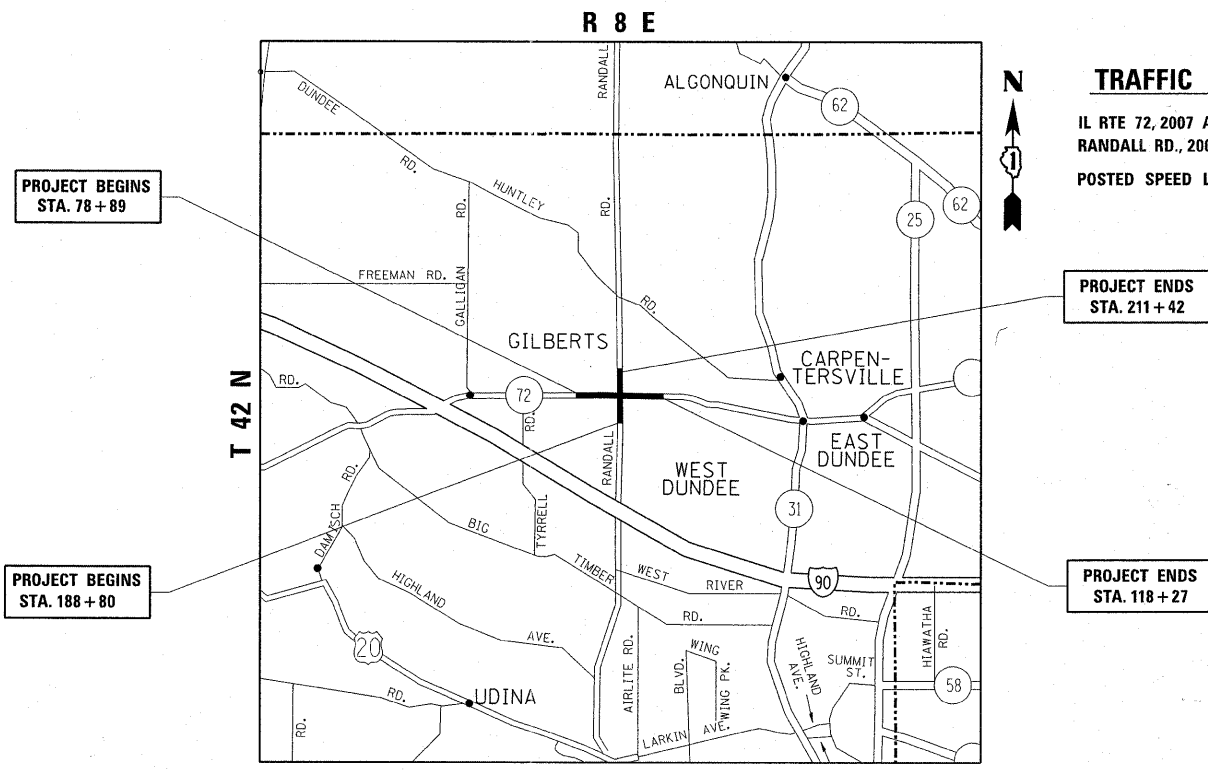


FULL SIZE PLANS HAVE BEEN PREPARED USING STANDARD ENGINEERING SCALES. REDUCED SIZED PLANS WILL NOT CONFORM TO STANDARD SCALES. IN MAKING MEASUREMENTS ON REDUCED PLANS, THE ABOVE SCALES MAY BE USED.

J.U.L.I.E.
JOINT UTILITY LOCATION INFORMATION FOR EXCAVATION
1-800-892-0123
OR 811

PROJECT ENGINEER KARI SMITH (847) 705-4437
PROJECT MANAGER KEN ENG (847) 705-4247

CONTRACT NO. 60K09



PROJECT BEGINS
STA. 78 + 89

PROJECT BEGINS
STA. 188 + 80

TRAFFIC DATA
IL RTE 72, 2007 ADT = 45,000
RANDALL RD., 2007 ADT = 16,000
POSTED SPEED LIMIT = 45-50 MPH

PROJECT ENDS
STA. 211 + 42

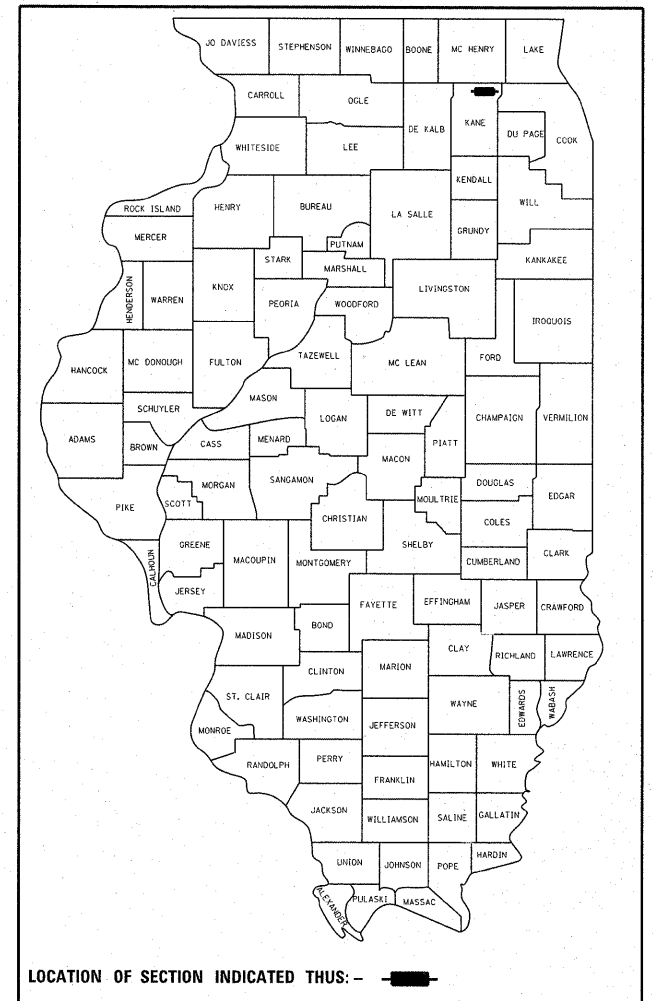
PROJECT ENDS
STA. 118 + 27

DUNDEE TOWNSHIP

GROSS & NET LENGTH OF PROJECT = 6,200 LINEAL FEET = 1.2 MILE

F.A.P. RTE.	SECTION	COUNTY	TOTAL SHEETS	SHEET NO.
341	62-N-1	KANE	148	1
FED. ROAD DIST. NO.	ILLINOIS	CONTRACT NO. 60K09		

D -91-402-10



STATE OF ILLINOIS
DEPARTMENT OF TRANSPORTATION
DIVISION OF HIGHWAYS

SUBMITTED June 24 20 11

Diane M. O'Keefe or
DEPUTY DIRECTOR OF HIGHWAYS, REGION ENGINEER

August 19 20 11
Scott E. Still P.E.
ENGINEER OF DESIGN AND ENVIRONMENT

August 19 20 11
Christine M. Reeder
DIRECTOR OF HIGHWAYS, CHIEF ENGINEER

**PRINTED BY THE AUTHORITY
OF THE STATE OF ILLINOIS**