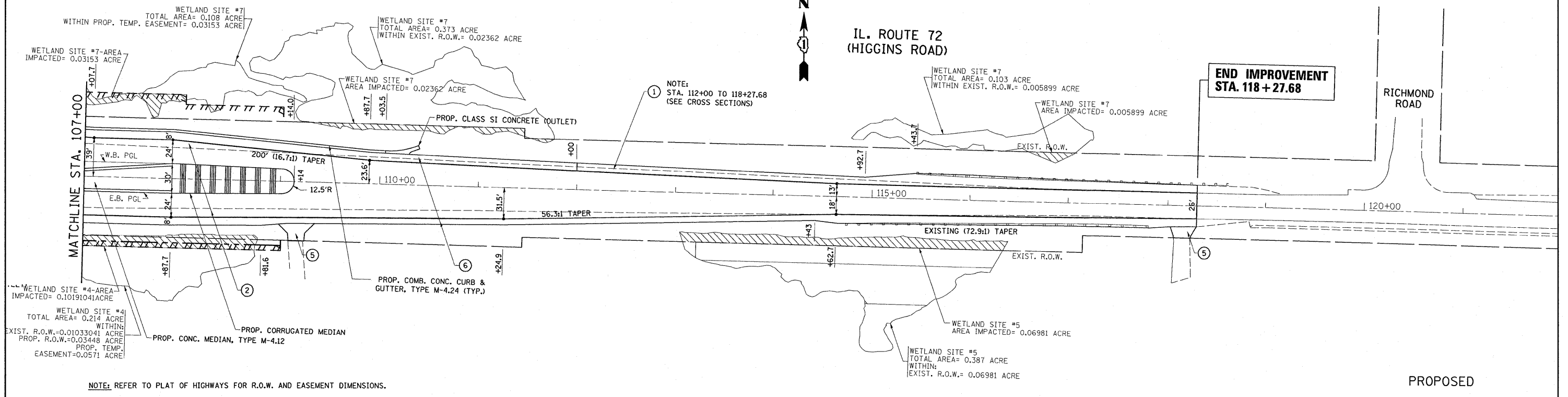


LEGEND

- ① RESURFACING
-PROP. POLYMERIZED HMA SURFACE COURSE, MIX "F", N90, 2".
- ② WIDENING
-PROP. POLYMERIZED HMA SURFACE COURSE, MIX "F", N90, 2".
-PROP. POLYMERIZED HMA BINDER COURSE, N90, 10 1/2" (IL 72) AND 9 1/2" (RANDALL RD.)
-PROP. AGGREGATE SUBGRADE, 12"
- ③ P.E. DRIVEWAY
-PROP. HMA SURFACE COURSE, MIX "C", N50, 2"
-PROP. HMA BASE COURSE, 6"
- ④ C.E. DRIVEWAY
-PROP. HMA SURFACE COURSE, MIX "C", N50, 2"
-PROP. HMA BASE COURSE, TYPE B, 8"
- ⑤ FIELD ENTRANCE
-PROP. HMA SURFACE COURSE, MIX "C", N50, 2"
-PROP. AGGREGATE BASE COURSE, TYPE B, 8"
- ⑥ SHOULDER
-PROP. POLYMERIZED HMA SURFACE COURSE, MIX "F", N90, 2".
-PROP. POLYMERIZED HMA BINDER COURSE, N90, 9 1/2" (RANDALL RD.) AND 10 1/2" (IL 72)
-PROP. AGGREGATE SUBGRADE, 12"



NOTE: REFER TO PLAT OF HIGHWAYS FOR R.O.W. AND EASEMENT DIMENSIONS.

FILE NAME = P110008-shr-plan.dgn	USER NAME = drivakosgn	DESIGNED - DRAWN - CHECKED - DATE -	REVISED - REVISED - REVISED - REVISED -	STATE OF ILLINOIS DEPARTMENT OF TRANSPORTATION	IL. ROUTE 72 (HIGGINS ROAD) @ RANDALL ROAD EXISTING & PROPOSED ROADWAY PLAN	F.A.P. RTE. 341	SECTION 62-N-1	COUNTY KANE	TOTAL SHEETS 148	SHEET NO. 22
						SCALE: 1" = 50'	SHEET NO. OF SHEETS	STA. 107+00.00 TO STA. 122+00.00	ILLINOIS FED. AID PROJECT	

19:30:53 05/22/2011