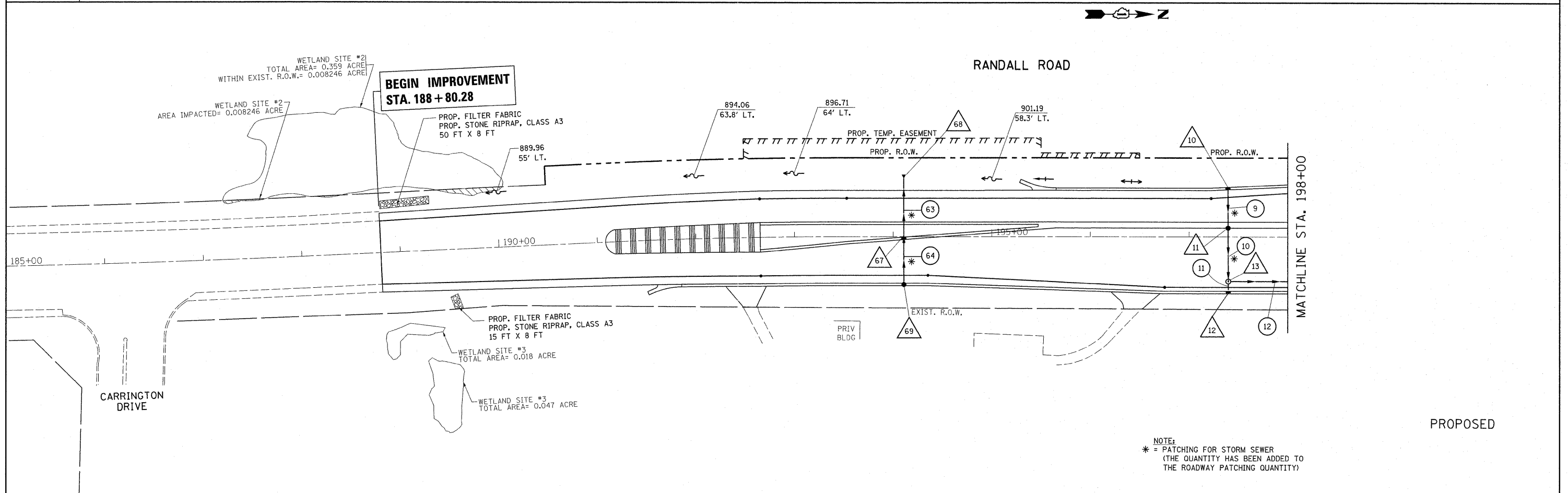


- LEGEND**
- 1 PIPE CULVERT REMOVAL (TYP.)
 - 2 FLARED END SECTION REMOVAL
 - 3 PIPE UNDERDRAIN REMOVAL
 - 4 STORM SEWER REMOVAL, 12"
 - 5 STORM SEWER REMOVAL, 18"
 - 6 STORM SEWER REMOVAL, 24"
 - 7 STORM SEWER REMOVAL, 15"
 - 8 STORM SEWER REMOVAL, 30"
 - 9 REMOVING MANHOLES
 - 10 REMOVING CATCH BASINS
 - 11 CONCRETE HEADWALL FOR PIPE UNDERDRAIN REMOVAL



NOTE:
 * = PATCHING FOR STORM SEWER
 (THE QUANTITY HAS BEEN ADDED TO
 THE ROADWAY PATCHING QUANTITY)

FILE NAME = P110208-sht-drain.dgn	USER NAME = pocitech	DESIGNED - DRAWN -	REVISED - REVISED -	STATE OF ILLINOIS DEPARTMENT OF TRANSPORTATION	RANDALL ROAD AT IL. ROUTE 72 (HIGGINS RD). EXISTING & PROPOSED DRAINAGE SHEET	F.A.P. RTE. 341	SECTION 62-N-1	COUNTY KANE	TOTAL SHEETS 148	SHEET NO. 33
PLOT SCALE = 50.0000' / 1" =		CHECKED - DATE -		SCALE: 1" = 50'		SHEET NO. OF SHEETS		STA. 185+00.00 TO STA. 198+00.00		CONTRACT NO. 60K09
PLOT DATE = 6/23/2011		DATE -								ILLINOIS FED. AID PROJECT