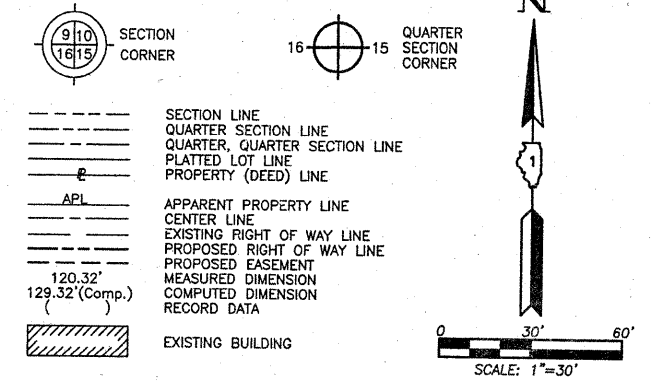


PART OF THE EAST 1/2 OF SEC. 19 AND PART OF THE WEST 1/2 OF SEC. 20, TWP. 42 N., R. 8 E. OF THE 3RD. P.M., IN KANE COUNTY, ILLINOIS.

LEGEND



STATION	OFFSET	NORTH	EAST
98+86.76	60.86' Rt.	1,980,218.464	983,622.436
98+90.11	70.00' Lt.	1,980,349.274	983,627.439
98+95.81	70.00' Lt.	1,980,349.202	983,633.134
99+96.06	1.42' Rt.	1,980,276.514	983,732.471
100+38.92	0.24' Lt.	1,980,275.637	983,775.346
100+44.22	1.25' Lt.	1,980,276.511	983,780.672
100+44.33	0.26' Lt.	1,980,275.522	983,780.754
101+43.90	59.44' Rt.	1,980,213.261	983,878.743
101+56.59	75.87' Lt.	1,980,348.200	983,894.932
197+96.67	40.75' Rt.	1,980,074.496	983,776.870
197+96.75	73.75' Rt.	1,980,074.521	983,809.870
198+89.95	63.89' Lt.	1,980,167.935	983,672.372
198+98.24	72.83' Rt.	1,980,176.008	983,809.101
198+98.27	89.85' Rt.	1,980,176.012	983,826.124
201+00.00	80.00' Lt.	1,980,378.006	983,656.583

Existing & Proposed Pavement Illinois Route 72 Curve #1

P.I. = Sta. 95+36.95
 Δ = 1°09'12"
 R = 27245.34'
 T = 274.24'
 L = 548.46'
 P.C. = Sta. 92+62.71
 P.T. = Sta. 98+11.17

Measured @ R.O.W. Illinois Route 72 Curve Data

Δ = 1°54'30"
 R = 28647.80'
 T = 477.16'
 L = 954.23'
 E = 3.97'

SECOND ADDITION TO COUNTRY VIEW HIGHLANDS SUBDIVISION

Recorded June 9, 1959 as Document No. 891700

See Sheet 4 for Parcel 1HC0008T.E.

SEE SHEET 4

SEE SHEET 8

PARCEL NUMBER	OWNER	TOTAL HOLDINGS ACRES	PART TAKEN ACRES	SQUARE FEET	AREA IN EXISTING R.O.W. ACRES	REMAINDER AREA ACRES	EASEMENT AREA SQUARE FEET	EASEMENT PURPOSE	PERMANENT INDEX NUMBER	PROPERTY ACQUIRED BY
1HC0009-A 1HC0009-B 1HC0009T.E.-A 1HC0009T.E.-B 1HC0009T.E.-C	Prudential Care, an Illinois Corporation	1.901	A=0.009 B=0.043	391 N/A	N/A	1.849	T.E.-A=0.069 T.E.-B=0.038 T.E.-C=0.009	N/A Grading Grading	03-19-200-003	

STATION	OFFSET	NORTH	EAST
201+04.08	70.00' Lt.	1,980,382.076	983,666.590
201+09.97	64.03' Lt.	1,980,387.955	983,672.572
201+37.19	92.49' Rt.	1,980,414.932	983,829.134
202+50.01	70.00' Lt.	1,980,528.006	983,666.817
202+50.01	80.00' Lt.	1,980,528.021	983,656.816
202+50.01	90.00' Lt.	1,980,528.037	983,646.816
202+50.01	100.00' Lt.	1,980,528.052	983,636.815
202+89.07	64.15' Lt.	1,980,567.058	983,672.735
202+89.31	90.00' Lt.	1,980,567.332	983,646.877
202+89.40	99.96' Lt.	1,980,567.437	983,636.926

Parcel	Document No.	Date Recorded
1HC0009	94K091088	December 19, 1994
-----	570175	December 12, 1946
-----	918296	April 27, 1960
-----	1303206	July 9, 1974
-----	95K062444	October 18, 1995
-----	95K074957	December 7, 1995
-----	96K017695	March 12, 1996
-----	96K017898	March 12, 1996

STATION	OFFSET	NORTH	EAST
95+71.07	70.00' Lt.	1,980,352.253	983,307.796
95+71.35	59.77' Lt.	1,980,342.018	983,308.038
95+71.40	57.90' Lt.	1,980,340.148	983,308.083
98+11.17	70.00' Lt.	1,980,350.271	983,548.503
98+53.85	59.38' Lt.	1,980,339.109	983,590.847
98+53.65	70.00' Lt.	1,980,349.734	983,590.982
98+85.34	59.45' Lt.	1,980,338.783	983,622.532



JUL 15 2010
 PLATS & LEGALS

Point Number	Tie to point	Tie Distance (feet)
1	T1	26.02
	T2	19.91
	T3	25.62
2	T1	18.23
	T2	9.48
	T3	16.92
3	T1	21.35
	T2	26.86
	T3	34.73
4	T1	43.98
	T2	31.55
	T3	18.36
5	T1	42.82
	T2	38.08
	T3	41.78
6	T1	24.57
	T2	18.38
	T3	25.13

PLAT OF HIGHWAYS
 STATE OF ILLINOIS
 DEPARTMENT OF TRANSPORTATION
 F.A.P. 341 (ILLINOIS ROUTE 72)

SECTION KANE COUNTY
 PROJECT JOB NO. R-91-034-09
 STATION 95+00 TO STATION 102+00 (ILLINOIS ROUTE 72)
 STATION 197+00 TO STATION 203+00 (RANDALL ROAD)
 SCALE: 1"=30'
 SHEET 5 OF 12

BUREAU OF LAND ACQUISITION
 201 WEST CENTER COURT
 SCHAUMBURG, ILLINOIS 60196