

F.A. RTE.	SECTION	COUNTY	TOTAL SHEETS	SHEET NO.
VAR.	2010-077-1	VAR.	21	1
FED. ROAD DIST. NO 1	ILLINOIS	CONTRACT NO. 60L65		

STATE OF ILLINOIS
DEPARTMENT OF TRANSPORTATION
DIVISION OF HIGHWAYS

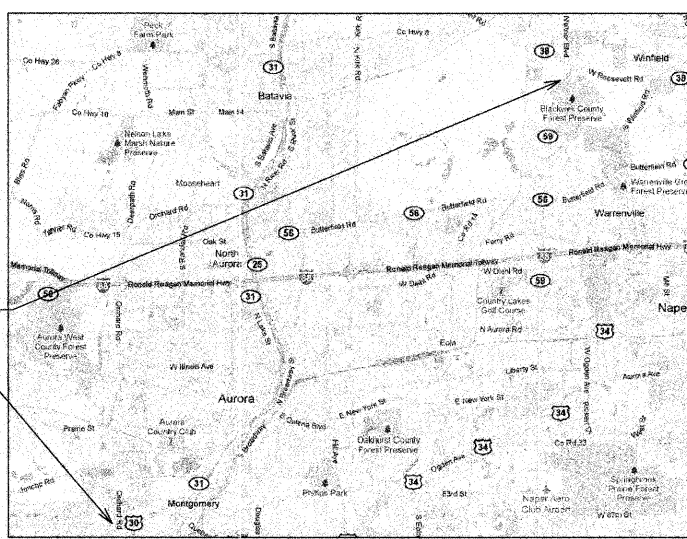
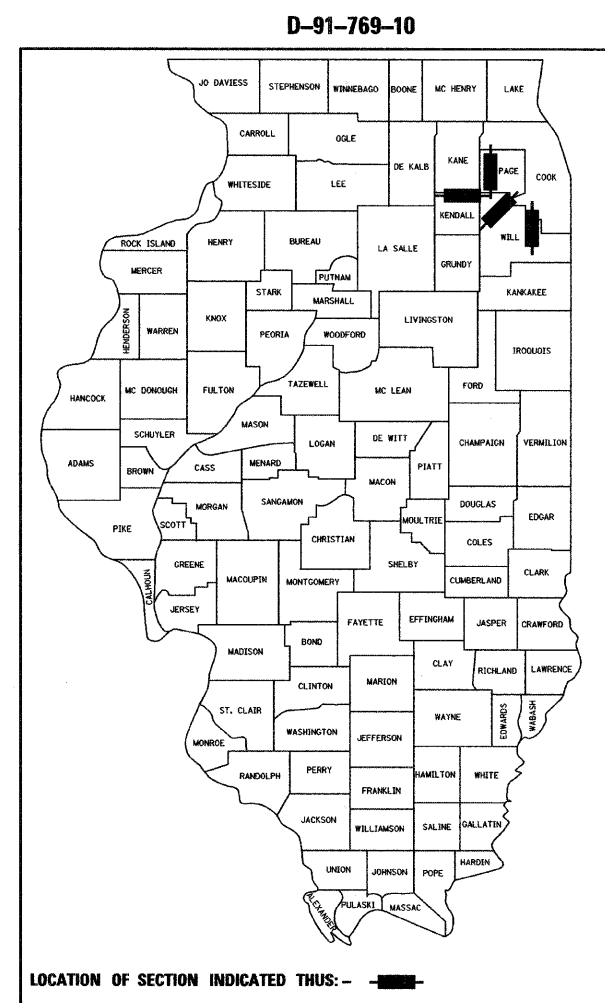
**PROPOSED
HIGHWAY PLANS**

VARIOUS ROUTES
SECTION 2010-077-1
VARIOUS LOCATIONS
SCOUR COUNTERMEASURES
DUPAGE, WILL, AND KENDALL COUNTIES
C-91-769-10

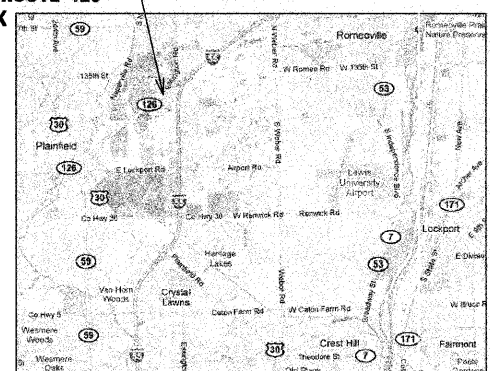
FOR INDEX OF SHEETS, SEE SHEET NO. 2

IMPROVEMENTS LOCATED IN THE
UNINCORPORATED DUPAGE COUNTY
VILLAGE OF PLAINFIELD
VILLAGE OF MONTGOMERY
VILLAGE OF MOKENA

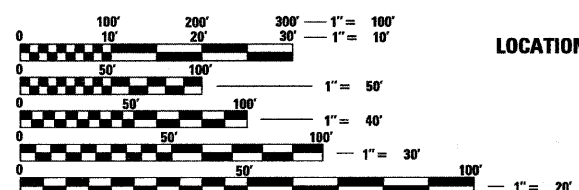
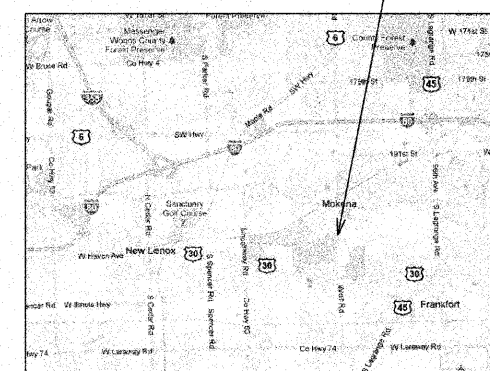
DISTRICT ONE - PLAN PREPARATION ENGINEER: KEN ENG: (847) 705-4247



LOCATION 2: S.N. 099-0262, ILLINOIS ROUTE 126
OVER LILY CACHE CREEK



LOCATION 4: S.N. 099-0271, WOLF ROAD
OVER HICKORY CREEK



FULL SIZE PLANS HAVE BEEN PREPARED USING STANDARD
ENGINEERING SCALES. REDUCED SIZED PLANS WILL NOT
CONFORM TO STANDARD SCALES. IN MAKING MEASUREMENTS
ON REDUCED PLANS, THE ABOVE SCALES MAY BE USED.

J.U.L.I.E.
JOINT UTILITY LOCATION INFORMATION FOR EXCAVATION
1-800-892-0123
OR 811

STATE OF ILLINOIS
DEPARTMENT OF TRANSPORTATION
DIVISION OF HIGHWAYS

SUBMITTED JULY 21 20 11

Diane M. O'Keefe
DEPUTY DIRECTOR OF HIGHWAYS, REGION ENGINEER

August 19 20 11
Scott E. Stitt, P.E.
ENGINEER OF DESIGN AND ENVIRONMENT

August 19 20 11
Christine M. Rooder
DIRECTOR OF HIGHWAYS, CHIEF ENGINEER

PROFESSIONAL ENGINEER'S SIGN & SEAL

Christopher M. Heston

EXPIRES: 11-30-2011

PRINTED BY THE AUTHORITY
OF THE STATE OF ILLINOIS

CONTRACT NO. 60L65