

NOTES FOR TEMPORARY TRAFFIC SIGNALS

1. ALL CONTROL EQUIPMENT INCLUDING EMERGENCY PRE-EMPTION AND COMMUNICATION DEVICES FOR THE TEMPORARY TRAFFIC SIGNAL(S) SHALL BE FURNISHED BY THE CONTRACTOR. EVP WILL BE PAID FOR SEPARATELY.

2. ONLY CONTROLLERS SUPPLIED BY ONE OF THE DISTRICT APPROVED CLOSED LOOP EQUIPMENT MANUFACTURERS WILL BE APPROVED FOR USE AT TEMPORARY SIGNAL LOCATIONS. ALL CONTROLLERS USED FOR TEMPORARY TRAFFIC SIGNALS SHALL BE FULLY ACTUATED NEMA MICROPROCESSOR BASED WITH RS232 DATA ENTRY PORTS COMPATIBLE WITH EXISTING MONITORING SOFTWARE APPROVED BY IDOT DISTRICT 1. INSTALLED IN A NEMA TS1 OR TS2 CABINET. ONLY ONE BRAND OF CONTROLLER WILL BE ACCEPTED FOR ANY ONE CONTRACT.

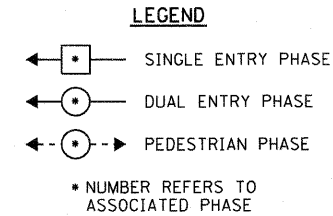
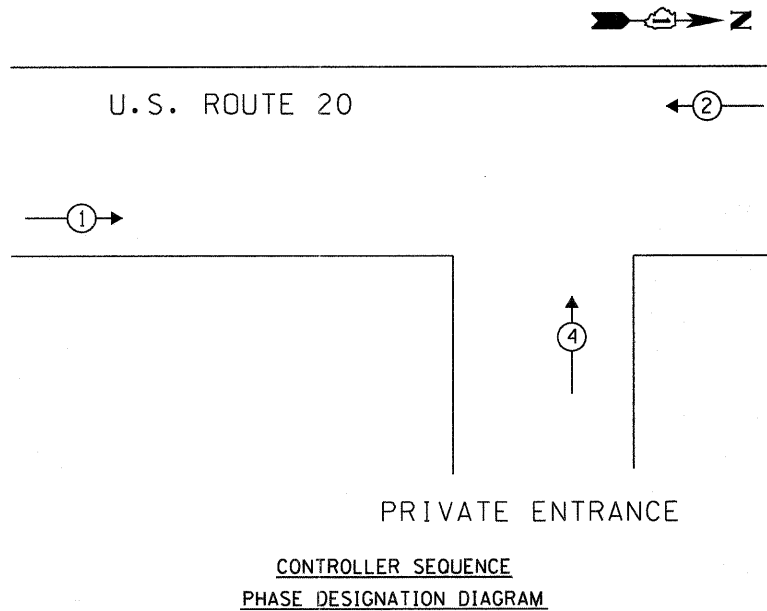
3. ALL TRAFFIC SIGNAL SECTIONS AND PEDESTRIAN SIGNAL SECTIONS SHALL BE 12" (300MM). HEADS SHALL BE PLACED AS INDICATED ON THE TEMPORARY TRAFFIC SIGNAL PLAN OR AS DIRECTED BY THE ENGINEER. THE CONTRACTOR SHALL FURNISH ENOUGH CABLE SLACK TO RELOCATE HEADS TO ANY POSITION ON THE SPAN WIRE OR AT LOCATIONS ILLUSTRATED ON THE PLANS FOR CONSTRUCTION STAGING. THE TEMPORARY TRAFFIC SIGNAL SHALL REMAIN IN OPERATION DURING ALL SIGNAL HEAD RELOCATIONS. EACH TEMPORARY TRAFFIC SIGNAL HEAD SHALL HAVE ITS OWN CABLE FROM THE CONTROLLER CABINET TO THE SIGNAL HEAD.

4. ANY TEMPORARY SIGNAL WITHIN AN EXISTING CLOSED LOOP TRAFFIC SIGNAL SYSTEM SHALL BE INTERCONNECTED TO THAT SYSTEM USING SIMILAR BRAND CONTROL EQUIPMENT.

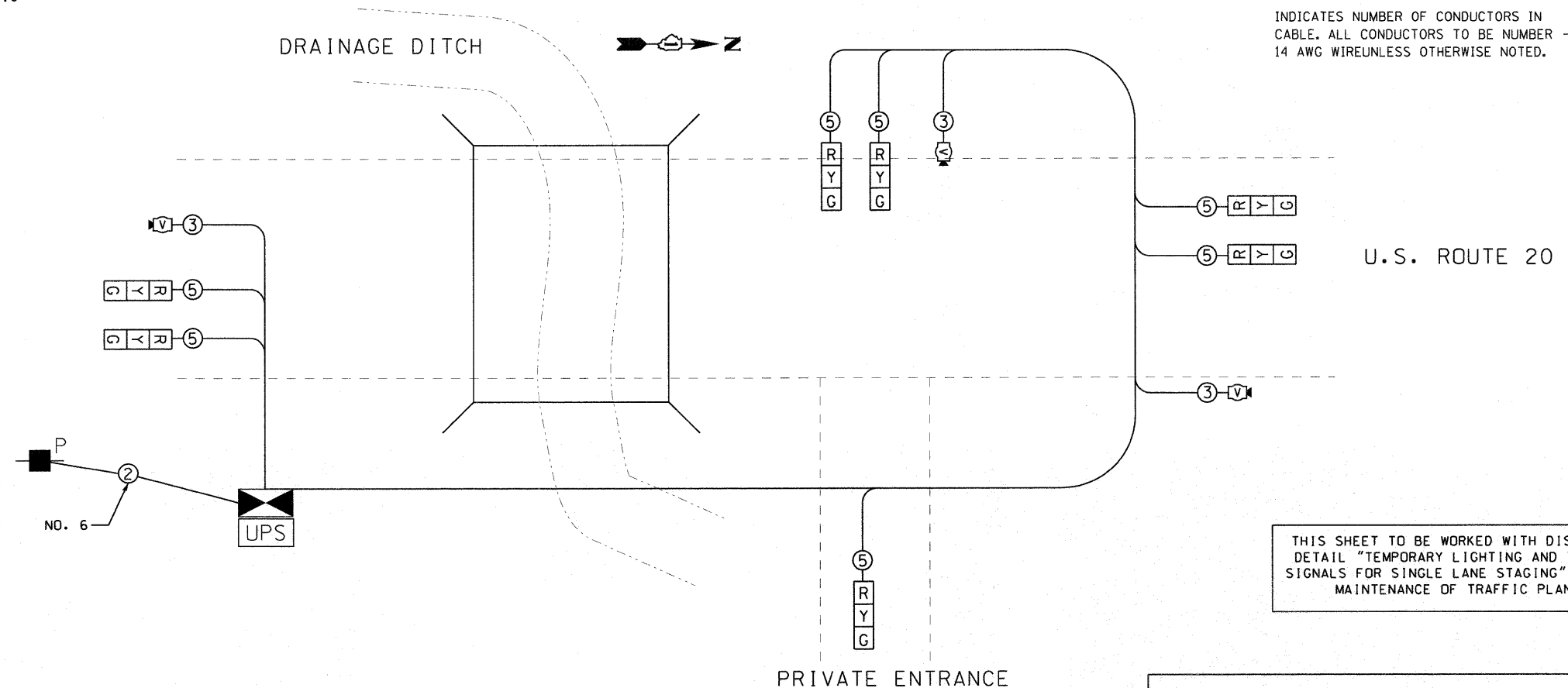
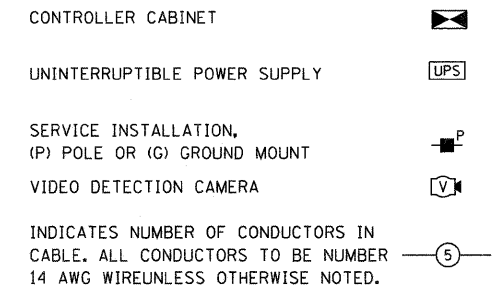
5. 24" WHITE STOP BAR TO BE INSTALLED AFTER THE INSTALLATION AND IMPLEMENTATION OF THE TEMPORARY TRAFFIC SIGNALS.

GENERAL NOTES

1. CONTROLLER WITH STEEL BASE CABINET AND BATTERY BACK-UP CABINET SHALL BE MOUNTED ON A WOOD STAND.
2. UN-INTERRUPTABLE POWER SUPPLY (UPS) SHALL BE INCLUDED IN "TEMPORARY BRIDGE TRAFFIC SIGNAL INSTALLATION" PAY ITEM.
3. 9 WOOD POLES INSTALLED BY THE TRAFFIC CONTRACTOR (SEE TEMPORARY TRAFFIC SIGNAL PLANS).
4. PROPOSED WOOD POLES FOR ROADWAY LIGHTING SHALL BE USED TO SUPPORT TRAFFIC SIGNAL CABLE.
5. TRAFFIC SIGNAL AND ROADWAY LIGHTING SHALL UTILIZE A COMBINATION ELECTRIC SERVICE BOX. (SEE DETAIL)
6. ALL SIGNAL HEADS SHALL BE L.E.D.



TEMPORARY CABLE DIAGRAM LEGEND



THIS SHEET TO BE WORKED WITH DISTRICT 1 DETAIL "TEMPORARY LIGHTING AND TRAFFIC SIGNALS FOR SINGLE LANE STAGING" AND THE MAINTENANCE OF TRAFFIC PLANS.

J.U.L.I.E.
JOINT UTILITY LOCATION INFORMATION FOR EXCAVATION
1-800-892-0123

I.D.O.T TRAFFIC SIGNAL INSTALLATION ELECTRICAL SERVICE REQUIREMENTS					TOTAL WATTAGE
TYPE	NO. LAMPS	WATTAGE INCAND.	WATTAGE LED	*OPERATION	
SIGNAL (RED)	7	135	17	0.50	59.5
(YELLOW)	7	135	25	0.25	43.8
(GREEN)	7	135	15	0.25	26.3
ARROW		135	12	0.10	
PED. SIGNAL		90	25	1.00	
CONTROLLER	1	100	100	1.00	100.0
ILLUM. SIGN		84		0.05	
FLASHER				0.50	--
ENERGY COSTS TO:					TOTAL = 230.0

ILLINOIS DEPARTMENT OF TRANSPORTATION
201 WEST CENTER COURT
SCHAMBURG, ILLINOIS 60196-1096
ENERGY SUPPLY CONTACT:
PHONE: (708) 235-2327
COMPANY: COM. ED.

FOUNDATION (DEPTH)	FT. (m)	CABLE SLACK	FT. (m)	VERTICAL	FT. (m)
TYPE A - POST	4 (1.2)	HANDHOLE	6.5 (2.0)	ALL FOUNDATIONS	3.5 (1.0)
D - CONTROLLER	4 (1.2)	DOUBLE HANDHOLE	13 (4.0)	MAST ARM (L) POLE	20'+L-2'
E - M. ARM POLE		SIGNAL POST	2 (1.0)	(6m+L-0.6m)±	
24" (600mm)	10 (3.0)	CONTROLLER CAB.	1 (0.5)	BRACKET MOUNTED	13 (4.0)
30" (750mm)	15 (4.6)	FIBER OPTIC	13 (4.0)	PED. PUSHBUTTON	4 (1.2)
		ELECTRIC SERVICE	1 (0.5)	ELECTRIC SERVICE	13.5 (4.1)
		GROUND CABLE	1 (0.5)	SERVICE TO GROUND	13.5 (4.1)
				POST MOUNTED	6 (1.8)

SUMMARY OF QUANTITIES			
ITEM	DESCRIPTION	UNIT	QUANTITY
X8900005	TEMPORARY BRIDGE TRAFFIC SIGNAL INSTALLATION	EACH	1