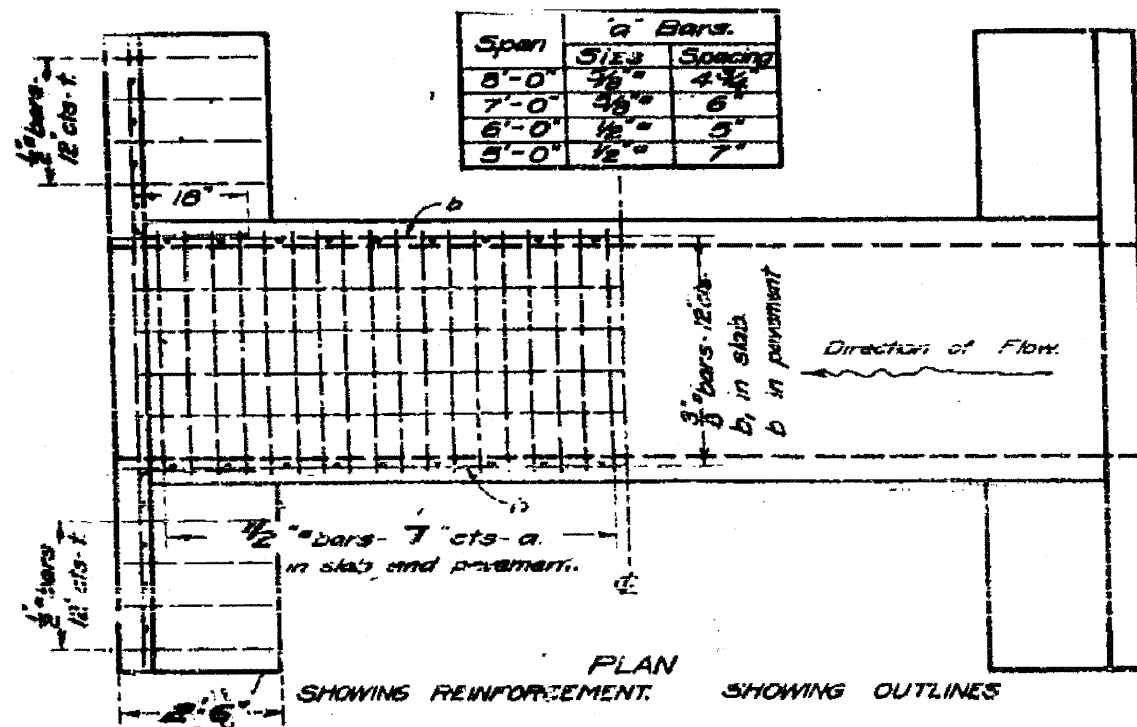
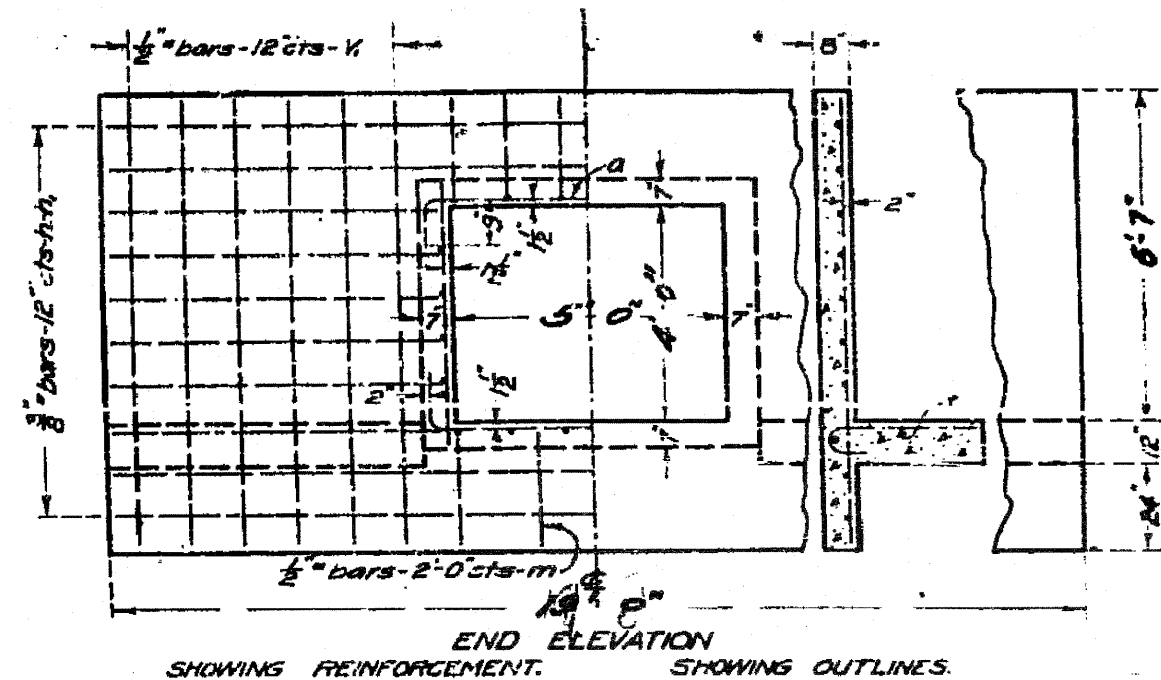
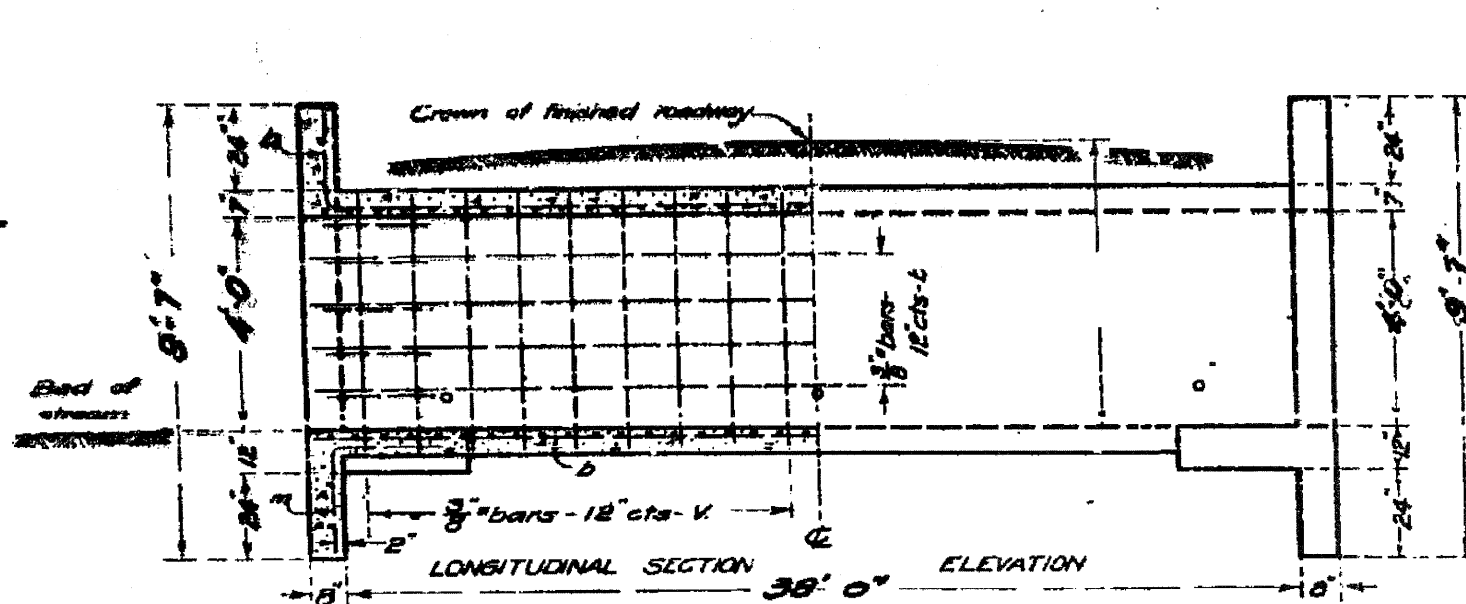


STATE OF ILLINOIS  
STATE HIGHWAY DEPARTMENT  
REINFORCED CONCRETE BOX CULVERT

BOND ISSUE ROUTE NO.	COUNTY	SEC.	TOTAL SHEETS	SHEET NO.
5	McHENRY	11	34	33



Note - Use "m" bars in downstream headwall only.  
Box is designed for no fill.  
Maximum clearance - 7'-5"

BILL OF MATERIAL

Bars	No.	Size	Length
v	36	3/8"	3'-0"
v <sub>1</sub>	24	1/2"	8'-0"
h	0	3/8"	10'-6"
h <sub>1</sub>	20	3/8"	8'-0"
a	132	1/2"	7'-6"
b	36	3/8"	12'-0"
b <sub>1</sub>	12	3/8"	15'-6"
r	24	1/2"	3'-0"
m	9	1/2"	5'-0"
Steel - Lbs.			1775
Concrete - Cu. Yds.			25.5

Class A concrete to be used throughout  
Proportions 1 - 2 1/2 - 4

Route 5 Sec 11  
Sta 80+57  
McHenry Co.

DESIGNED	TWO
CHECKED	BHS
DRAWN	TWO
CHECKED	BHS

*Russell R. ...*  
Engr. of Design



USER NAME = 2sayerb  
PLOT SCALE = N/A  
PLOT DATE = 6/28/2011

DESIGNED	TWO	REVISED	-
CHECKED	BHS	REVISED	-
DRAWN	TWO	REVISED	-
CHECKED	BHS	REVISED	-

STATE OF ILLINOIS  
DEPARTMENT OF TRANSPORTATION

EXISTING CULVERT PLANS  
S.N. 056-0279 - U.S. ROUTE 20 OVER DRAINAGE DITCH

SHEET NO. 56 OF 6 SHEETS

F.A.P. RTE.	SECTION	COUNTY	TOTAL SHEETS	SHEET NO.
525	11-T-1	McHENRY	34	20
CONTRACT NO. 60M53				
FED. ROAD DIST. NO. 1 ILLINOIS FED. AID PROJECT				