

F.A. RTE.	SECTION	COUNTY	TOTAL SHEETS	SHEET NO.
VAR.	2010-124-1	VAR.	21	1
FED. ROAD DIST. NO 1	ILLINOIS	CONTRACT NO. 60M86		

STATE OF ILLINOIS
DEPARTMENT OF TRANSPORTATION
DIVISION OF HIGHWAYS

**PROPOSED
HIGHWAY PLANS**

VARIOUS ROUTES
SECTION 2010-124-1
VARIOUS LOCATIONS
SCOUR COUNTERMEASURES
LAKE AND MCHENRY COUNTIES
C-91-182-11

FOR INDEX OF SHEETS, SEE SHEET NO. 2

IMPROVEMENTS LOCATED IN THE
VILLAGE OF GURNEE
VILLAGE OF SPRING GROVE
VILLAGE OF RICHMOND

DISTRICT ONE - PLAN PREPARATION ENGINEER: KEN ENG: (847) 705-4247



STATE OF ILLINOIS
DEPARTMENT OF TRANSPORTATION
DIVISION OF HIGHWAYS

SUBMITTED JULY 21 20 11

Diane M. O'Keefe
DEPUTY DIRECTOR OF HIGHWAYS, REGION ENGINEER

August 19 20 11
Scott E. Stitt P.E.
ENGINEER OF DESIGN AND ENVIRONMENT

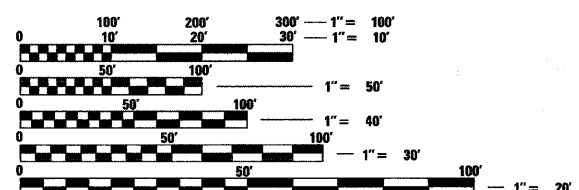
August 19 20 11
Christine M. Rooden
DIRECTOR OF HIGHWAYS, CHIEF ENGINEER

PROFESSIONAL ENGINEER'S SIGN & SEAL

Christopher M. Huetten

EXPIRES: 11-30-2011

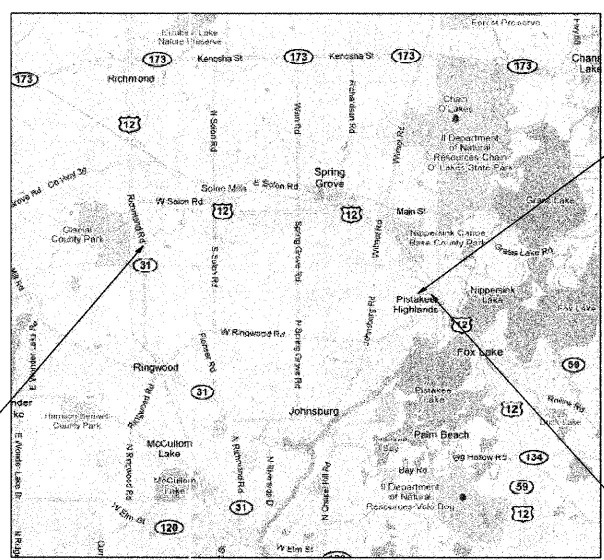
PRINTED BY THE AUTHORITY
OF THE STATE OF ILLINOIS



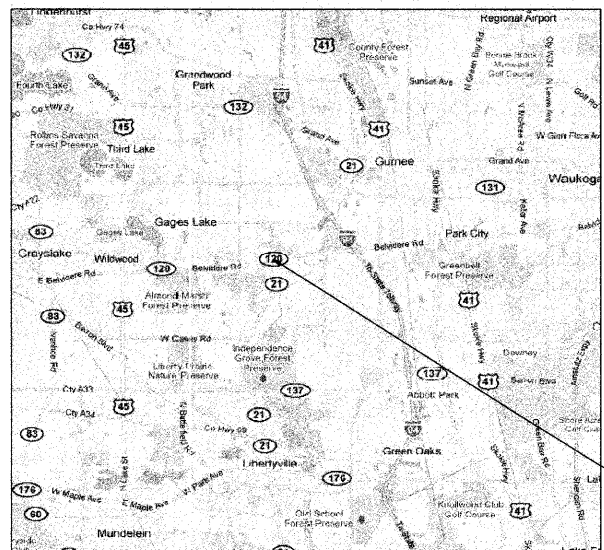
FULL SIZE PLANS HAVE BEEN PREPARED USING STANDARD ENGINEERING SCALES. REDUCED SIZED PLANS WILL NOT CONFORM TO STANDARD SCALES. IN MAKING MEASUREMENTS ON REDUCED PLANS, THE ABOVE SCALES MAY BE USED.

J.U.L.I.E.
JOINT UTILITY LOCATION INFORMATION FOR EXCAVATION
1-800-892-0123
OR 811

CONTRACT NO. 60M86



LOCATION 4: S.N. 056-0037, ILLINOIS ROUTE 31 OVER NIPPERSINK CREEK



LOCATION 2: S.N. 056-0057, U.S. ROUTE 12 OVER NIPPERSINK CREEK