

INDEX OF SHEETS

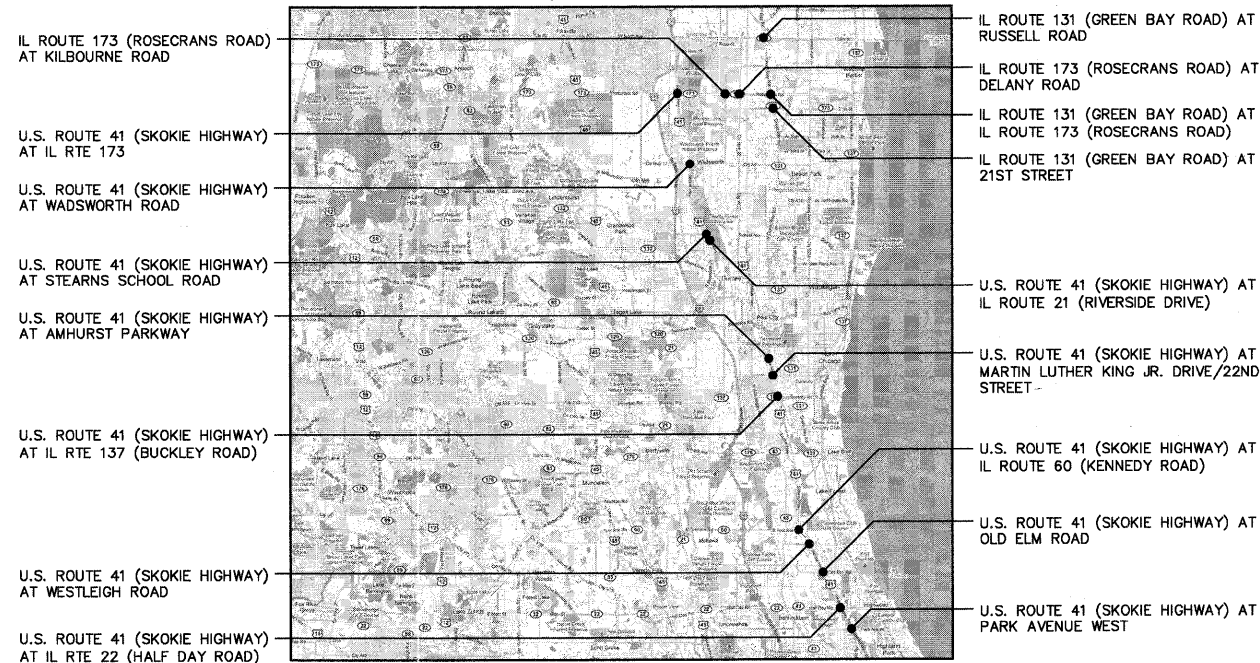
1. TITLE SHEET
- 2.-5. SCHEDULE OF QUANTITIES
- 6.-11. DISTRICT ONE STANDARD TRAFFIC SIGNAL DESIGN DETAILS
- 12.-13. TRAFFIC SIGNAL MODERNIZATION PLAN - U.S. RTE 41 (SKOKIE HIGHWAY) AT PARK AVENUE WEST
14. SCHEDULE OF QUANTITIES, CABLE PLAN, PHASE DESIGNATION DIAGRAM, VEHICLE PREEMPTION SEQUENCE - U.S. RTE 41 (SKOKIE HIGHWAY) AT PARK AVENUE WEST
- 15.-16. TRAFFIC SIGNAL MODERNIZATION PLAN - U.S. RTE 41 (SKOKIE HIGHWAY) AT IL RTE 22 (HALF DAY ROAD)
17. SCHEDULE OF QUANTITIES, CABLE PLAN, PHASE DESIGNATION DIAGRAM, VEHICLE PREEMPTION SEQUENCE - U.S. RTE 41 (SKOKIE HIGHWAY) AT IL RTE 22 (HALF DAY ROAD)
- 18.-19. TRAFFIC SIGNAL MODERNIZATION PLAN - U.S. RTE 41 (SKOKIE HIGHWAY) AT OLD ELM ROAD
20. SCHEDULE OF QUANTITIES, CABLE PLAN, PHASE DESIGNATION DIAGRAM, VEHICLE PREEMPTION SEQUENCE - U.S. RTE 41 (SKOKIE HIGHWAY) AT OLD ELM ROAD
- 21.-22. RAILROAD PREEMPTION SEQUENCE OF OPERATIONS & SEQUENCE OF OPERATIONS - U.S. RTE 41 (SKOKIE HIGHWAY) AT OLD ELM ROAD
- 23.-24. TRAFFIC SIGNAL MODERNIZATION PLAN - U.S. RTE 41 (SKOKIE HIGHWAY) AT WESTLEIGH ROAD
25. SCHEDULE OF QUANTITIES, CABLE PLAN, PHASE DESIGNATION DIAGRAM, VEHICLE PREEMPTION SEQUENCE - U.S. RTE 41 (SKOKIE HIGHWAY) AT WESTLEIGH ROAD
26. RAILROAD PREEMPTION SEQUENCE OF OPERATIONS & SEQUENCE OF OPERATIONS - U.S. RTE 41 (SKOKIE HIGHWAY) AT WESTLEIGH ROAD
27. EMERGENCY VEHICLE PREEMPTION SEQUENCE OF OPERATIONS - U.S. RTE 41 (SKOKIE HIGHWAY) AT WESTLEIGH ROAD
28. TRAFFIC SIGNAL MODERNIZATION PLAN - U.S. RTE 41 (SKOKIE HIGHWAY) AT IL RTE 60 (KENNEDY ROAD)
29. SCHEDULE OF QUANTITIES, CABLE PLAN, PHASE DESIGNATION DIAGRAM, VEHICLE PREEMPTION SEQUENCE - U.S. RTE 41 (SKOKIE HIGHWAY) AT IL RTE 60 (KENNEDY ROAD)
- 30.-31. TRAFFIC SIGNAL MODERNIZATION PLAN - U.S. RTE 41 (SKOKIE HIGHWAY) AT IL RTE 137 (BUCKLEY ROAD)
32. SCHEDULE OF QUANTITIES, CABLE PLAN, PHASE DESIGNATION DIAGRAM, VEHICLE PREEMPTION SEQUENCE - U.S. RTE 41 (SKOKIE HIGHWAY) AT IL RTE 137 (BUCKLEY ROAD)
33. RAILROAD PREEMPTION SEQUENCE OF OPERATIONS & SEQUENCE OF OPERATIONS - U.S. RTE 41 (SKOKIE HIGHWAY) AT IL RTE 137 (BUCKLEY ROAD)
34. EMERGENCY VEHICLE PREEMPTION SEQUENCE OF OPERATIONS - U.S. RTE 41 (SKOKIE HIGHWAY) AT IL RTE 137 (BUCKLEY ROAD)
- 35.-36. TRAFFIC SIGNAL MODERNIZATION PLAN - U.S. RTE 41 (SKOKIE HIGHWAY) AT MARTIN LUTHER KING JR. DRIVE/22ND STREET
37. SCHEDULE OF QUANTITIES, CABLE PLAN, PHASE DESIGNATION DIAGRAM, VEHICLE PREEMPTION SEQUENCE - U.S. RTE 41 (SKOKIE HIGHWAY) AT MARTIN LUTHER KING JR. DRIVE/22ND STREET
38. RAILROAD PREEMPTION SEQUENCE OF OPERATIONS & SEQUENCE OF OPERATIONS - U.S. RTE 41 (SKOKIE HIGHWAY) AT MARTIN LUTHER KING JR. DRIVE/22ND STREET
39. EMERGENCY VEHICLE PREEMPTION SEQUENCE OF OPERATIONS - U.S. RTE 41 (SKOKIE HIGHWAY) AT MARTIN LUTHER KING JR. DRIVE/22ND STREET
40. TRAFFIC SIGNAL MODERNIZATION PLAN - U.S. RTE 41 (SKOKIE HIGHWAY) AT AMHURST PARKWAY
41. SCHEDULE OF QUANTITIES, CABLE PLAN, PHASE DESIGNATION DIAGRAM, VEHICLE PREEMPTION SEQUENCE - U.S. RTE 41 (SKOKIE HIGHWAY) AT AMHURST PARKWAY
42. TRAFFIC SIGNAL MODERNIZATION PLAN - U.S. RTE 41 (SKOKIE HIGHWAY) AT IL RTE 21 (RIVERSIDE DRIVE)
43. SCHEDULE OF QUANTITIES, CABLE PLAN, PHASE DESIGNATION DIAGRAM, VEHICLE PREEMPTION SEQUENCE - U.S. RTE 41 (SKOKIE HIGHWAY) AT IL RTE 21 (RIVERSIDE DRIVE)
44. TRAFFIC SIGNAL MODERNIZATION PLAN - U.S. RTE 41 (SKOKIE HIGHWAY) AT STEARNS SCHOOL ROAD
45. SCHEDULE OF QUANTITIES, CABLE PLAN, PHASE DESIGNATION DIAGRAM, VEHICLE PREEMPTION SEQUENCE - U.S. RTE 41 (SKOKIE HIGHWAY) AT STEARNS SCHOOL ROAD
46. TRAFFIC SIGNAL MODERNIZATION PLAN - U.S. RTE 41 (SKOKIE HIGHWAY) AT WADSWORTH ROAD
47. SCHEDULE OF QUANTITIES, CABLE PLAN, PHASE DESIGNATION DIAGRAM, VEHICLE PREEMPTION SEQUENCE - U.S. RTE 41 (SKOKIE HIGHWAY) AT WADSWORTH ROAD
- 48.-49. TRAFFIC SIGNAL MODERNIZATION PLAN - U.S. RTE 41 (SKOKIE HIGHWAY) AT IL RTE 173 (ROSECRANS ROAD)
50. SCHEDULE OF QUANTITIES, CABLE PLAN, PHASE DESIGNATION DIAGRAM, VEHICLE PREEMPTION SEQUENCE - U.S. RTE 41 (SKOKIE HIGHWAY) AT IL RTE 173 (ROSECRANS ROAD)
51. TRAFFIC SIGNAL MODERNIZATION PLAN - IL RTE 173 (ROSECRANS ROAD) AT KILBOURNE ROAD
52. SCHEDULE OF QUANTITIES, CABLE PLAN, PHASE DESIGNATION DIAGRAM, VEHICLE PREEMPTION SEQUENCE - IL RTE 173 (ROSECRANS ROAD) AT KILBOURNE ROAD
53. TRAFFIC SIGNAL MODERNIZATION PLAN - IL RTE 173 (ROSECRANS ROAD) AT DELANY ROAD
54. SCHEDULE OF QUANTITIES, CABLE PLAN, PHASE DESIGNATION DIAGRAM, VEHICLE PREEMPTION SEQUENCE - IL RTE 173 (ROSECRANS ROAD) AT DELANY ROAD
55. TRAFFIC SIGNAL MODERNIZATION PLAN - IL RTE 131 (GREEN BAY ROAD) AT 21ST STREET
56. SCHEDULE OF QUANTITIES, CABLE PLAN, PHASE DESIGNATION DIAGRAM, VEHICLE PREEMPTION SEQUENCE - IL RTE 131 (GREEN BAY ROAD) AT 21ST STREET
- 57.-58. TRAFFIC SIGNAL MODERNIZATION PLAN - IL RTE 131 (GREEN BAY ROAD) AT IL RTE 173 (ROSECRANS ROAD)
59. SCHEDULE OF QUANTITIES, CABLE PLAN, PHASE DESIGNATION DIAGRAM, VEHICLE PREEMPTION SEQUENCE - IL RTE 131 (GREEN BAY ROAD) AT IL RTE 173 (ROSECRANS ROAD)
- 60.-61. TRAFFIC SIGNAL MODERNIZATION PLAN - IL RTE 131 (GREEN BAY ROAD) AT RUSSELL ROAD (STATE LINE ROAD)
62. SCHEDULE OF QUANTITIES, CABLE PLAN, PHASE DESIGNATION DIAGRAM, VEHICLE PREEMPTION SEQUENCE - IL RTE 131 (GREEN BAY ROAD) AT RUSSELL ROAD (STATE LINE ROAD)

STATE OF ILLINOIS
DEPARTMENT OF TRANSPORTATION
DIVISION OF HIGHWAYS
**PROPOSED HIGHWAY
PLANS**
DISTRICT 1
TRAFFIC SIGNAL MODERNIZATION
VARIOUS ROUTES / VARIOUS LOCATIONS
SECTION: 2011-042-TS
LAKE COUNTY, ILLINOIS
JOB NO: C-91-564-11

F.A.P. RTE	SECTION	COUNTY	TOTAL SHEETS	SHEET NO.
VARIABLES	2011-042-TS	LAKE	62	1
		CONTRACT #:	60P49	
ILLINOIS FED. AID PROJECT				



LOCATION MAP
(NOT TO SCALE)



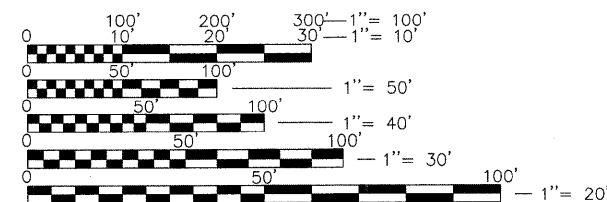
CONTRACT NO. 60P49

J.U.L.I.E. TOLL FREE
JOINT UTILITY LOCATING INFORMATION FOR EXCAVATORS
Call 48 hours before you dig (Excluding Sat., Sun., & Holidays)
1-800-892-0123

EXISTING UTILITIES: WHEN THE PLANS OR SPECIAL PROVISIONS INCLUDE INFORMATION PERTAINING TO THE LOCATION OF UNDERGROUND UTILITY FACILITIES, SUCH INFORMATION REPRESENTS ONLY THE OPINION OF THE ENGINEER AS TO THE LOCATION OF SUCH UTILITIES AND IS ONLY INCLUDED FOR THE CONVENIENCE OF THE BIDDER. THE ENGINEER AND OWNER ASSUME NO RESPONSIBILITY WHATSOEVER IN RESPECT TO THE SUFFICIENCY OR ACCURACY OF THE INFORMATION SHOWN ON THE PLANS RELATIVE TO THE LOCATION OF UNDERGROUND UTILITY FACILITIES OR THE MANNER IN WHICH THEY ARE TO BE REMOVED OR ADJUSTED. IT SHALL BE THE CONTRACTOR'S RESPONSIBILITY TO DETERMINE THE ACTUAL LOCATION OF ALL SUCH UTILITIES. HE SHALL ALSO OBTAIN FROM THE RESPECTIVE UTILITY COMPANIES, DETAILED INFORMATION RELATIVE TO THE LOCATION OF THEIR FACILITIES AND THE WORKING SCHEDULES OF THE UTILITY COMPANIES FOR REMOVING OR ADJUSTING THEM.

CONTRACTOR IS RESPONSIBLE FOR CONTACTING J.U.L.I.E. AT 1-800-892-0123 AND MUST ACQUIRE A DIG NUMBER A MINIMUM OF 72 HOURS PRIOR TO ANY WORK BEING DONE.

- DOT STANDARDS:**
- 000001-05 STANDARD SYMBOLS, ABBREVIATIONS, & PATTERNS
 - 001006 DECIMAL OF AN INCH OF A FOOT
 - 424001-05 CURB RAMPS FOR SIDEWALKS
 - 701006-03 OFF-ROAD OPERATIONS 2L, 2W, 15' TO 24" FROM PAVEMENT EDGE
 - 701011-02 OFF-ROAD MOVING OPERATIONS, 2L, 2W, DAY ONLY
 - 701101-02 OFF-RD OPERATIONS, MULTILANE, 15'(4.5 m) TO 24"(600 mm) FROM PAVEMENT EDGE
 - 701201-04 LANE CLOSURE, 2L, 2W, DAY ONLY, FOR SPEEDS ≥ 45 MPH
 - 701301-04 LANE CLOSURE 2L, 2W, SHORT TIME OPERATIONS
 - 701701-06 URBAN LANE CLOSURE MULTILANE INTERSECTION
 - 701801-04 LANE CLOSURE MULTILANE 1W OR 2W CROSSWALK OR SIDEWALK CLOSURE
 - 701901-01 TRAFFIC CONTROL DEVICES
 - 780001-02 TYPICAL PAVEMENT MARKINGS
 - 805001-01 ELECTRIC SERVICE INSTALLATION DETAILS
 - 814001-02 HANDHOLE
 - 857001-01 STANDARD PHASE DESIGNATION DIAGRAMS AND PHASE SEQUENCES
 - 862001-01 UNINTERRUPTABLE POWER SUPPLY (UPS)
 - 873001-02 TRAFFIC SIGNAL GROUNDING & BONDING
 - 877001-04 STEEL MAST ARM ASSEMBLY AND POLE 16' THROUGH 55'
 - 877002-01 STEEL MAST ARM ASSEMBLY AND POLE 56' THROUGH 75'
 - 878001-08 CONCRETE FOUNDATION DETAILS
 - 880001-01 SPAN WIRE MOUNTED SIGNALS AND FLASHING BEACON INSTALLATION
 - 880006-01 TRAFFIC SIGNAL MOUNTING DETAILS
 - 886001-01 DETECTOR LOOP INSTALLATIONS
 - 886006-01 TYPICAL LAYOUTS FOR DETECTION LOOPS



FULL SIZE PLANS HAVE BEEN PREPARED USING STANDARD ENGINEERING SCALES. REDUCED SIZED PLANS WILL NOT CONFORM TO STANDARD SCALES. IN MAKING MEASUREMENTS ON REDUCED PLANS, THE BELOW SCALES MAY BE USED.

Kevin L. Belgrave
DATE: 6/30/2011
EXPIRES: 11/30/2011

GHA GEWALT HAMILTON ASSOCIATES, INC.
850 Forest Edge Drive • Vernon Hills, IL 60061
Consulting Engineers & Surveyors
847-478-9700
FAX: 847-478-9701

STATE OF ILLINOIS
DEPARTMENT OF TRANSPORTATION
DIVISION OF HIGHWAYS

SUBMITTED: July 8 2011
Devin M. O'Keefe
DEPUTY DIRECTOR OF HIGHWAYS, REGION ENGINEER

August 19 2011
Scott E. Stitt, P.E.
ENGINEER OF DESIGN AND ENVIRONMENT

August 19 2011
Christine M. Fiedler
DIRECTOR OF HIGHWAYS, CHIEF ENGINEER

**PRINTED BY THE AUTHORITY
OF THE STATE OF ILLINOIS**