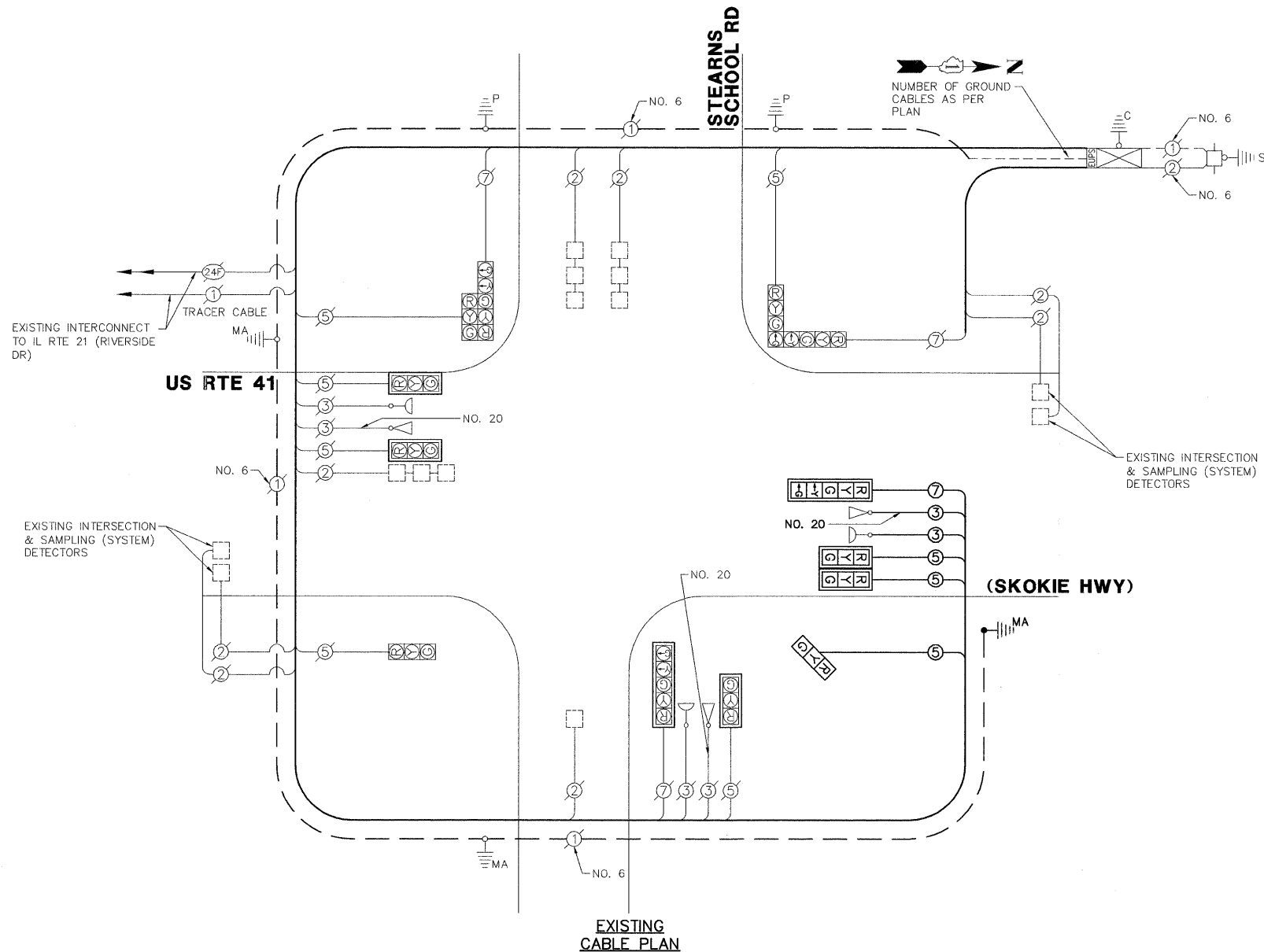
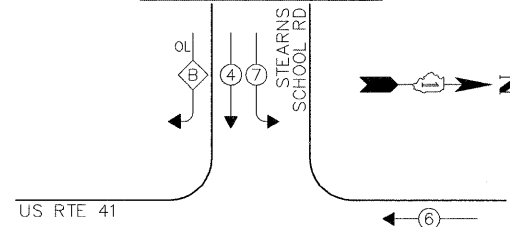


**SCHEDULE OF QUANTITIES**  
U.S. RTE 41 (SKOKIE HIGHWAY) AT STEARNS SCHOOL ROAD

NO.	QUANT.	UNIT	DESCRIPTION
1.	1	EACH	MAINTENANCE OF EXISTING TRAFFIC SIGNAL INSTALLATION
* 2.	433	FOOT	ELECTRIC CABLE IN CONDUIT, SIGNAL NO. 14 3C
3.	1,233	FOOT	ELECTRIC CABLE IN CONDUIT, SIGNAL NO. 14 5C
4.	439	FOOT	ELECTRIC CABLE IN CONDUIT, SIGNAL NO. 14 7C
5.	1	EACH	STEEL MAST ARM ASSEMBLY AND POLE, 48 FT.
6.	13	FOOT	CONCRETE FOUNDATION, TYPE E 36-INCH DIAMETER
7.	1	EACH	DRILL EXISTING HANDHOLE
8.	2	EACH	SIGNAL HEAD, LED, 1-FACE, 3-SECTION, MAST-ARM MOUNTED
9.	1	EACH	SIGNAL HEAD, LED, 1-FACE, 3-SECTION, BRACKET MOUNTED
10.	1	EACH	SIGNAL HEAD, LED, 1-FACE, 5-SECTION, MAST-ARM MOUNTED
* 11.	1	EACH	RELOCATE EXISTING EMERGENCY VEHICLE PRIORITY SYSTEM, DETECTOR UNIT
12.	1,340	FOOT	REMOVE ELECTRIC CABLE FROM CONDUIT
13.	1	EACH	REMOVE EXISTING TRAFFIC SIGNAL EQUIPMENT
14.	1	EACH	REMOVE EXISTING CONCRETE FOUNDATION
15.	7	EACH	RETROREFLECTIVE TRAFFIC SIGNAL BACKPLATE
* 16.	433	FOOT	ELECTRIC CABLE IN CONDUIT NO. 20 3/C, TWISTED, SHIELDED
*			ITEM PAID FOR BY THE VILLAGE OF GURNEE



**EXISTING CONTROLLER SEQUENCE**



**RIGHT TURN OVERLAP PHASE DESIGNATION**

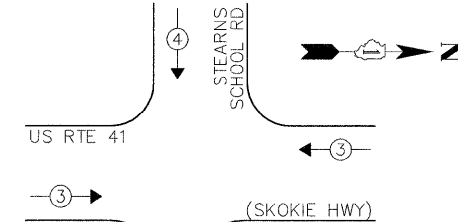
OVERLAP LETTER	PERMISSIVE PHASE	PROTECTED PHASE
B	= 4	+ 5

**LEGEND:**

- ◀ \* ▶ SINGLE ENTRY PHASE
- ◀ \* DUAL ENTRY PHASE
- ◀ \* ▶ PEDESTRIAN PHASE
- \* NUMBER REFERS TO ASSOCIATED PHASE
- ◀ \* OL OVERLAP

**EXISTING PHASE DESIGNATION DIAGRAM**

**EXISTING EMERGENCY VEHICLE PREEMPTION SEQUENCE**



EXISTING EMERGENCY VEHICLE PREEMPTORS	
EMERGENCY VEHICLE PREEMPTOR	3 4
MOVEMENT	↔ ↓

I.D.O.T. TRAFFIC SIGNAL INSTALLATION ELECTRICAL SERVICE REQUIREMENTS					TOTAL WATTAGE
TYPE	NO. LAMPS	INCAND.	L.E.D.	% OPERATION	
SIGNAL (RED)	13	135	17	0.50	110.5
SIGNAL (YELLOW)	13	135	25	0.25	81.25
SIGNAL (GREEN)	13	135	15	0.25	48.75
ARROW	8	135	12	0.10	9.6
PED. SIGNAL	-	90	25	1.00	-
CONTROLLER	1	-	100	1.00	100.00
LUMINAIRE	-	-	250	0.50	-
L.E.D. ST. NAME SIGN	-	-	64	0.50	-
VIDEO SYSTEM	-	-	150	1.00	-
BATTERY BACKUP	1	-	25	1.00	25.0
ILLUMINATED SIGN	-	-	25	0.05	-
<b>TOTAL =</b>					<b>375.1</b>

ENERGY COSTS - BILLED TO: IDOT DISTRICT 1  
(ADDRESS) 201 WEST CENTER COURT  
(ADDRESS) SCHAUMBURG, IL  
ENERGY SUPPLY - CONTACT: ALICE TAYLOR  
PHONE: 847.816.5458  
COMPANY: COMED

THE TRAFFIC SIGNAL CONTROL EQUIPMENT FOR THIS PROJECT SHALL BE "EAGLE" TO MATCH THE EXISTING ADJACENT SYSTEM.

FILE NAME = 4085.874-TR1.dwg	USER NAME = ZACH WALLSTEN	DESIGNED - JRD	REVISED -
PLOT SCALE = 1" = .0833'		DRAWN - JRM	REVISED -
PLOT DATE = 6/30/2011		CHECKED - KLB	REVISED -
		DATE - 6/30/2011	REVISED -

**STATE OF ILLINOIS  
DEPARTMENT OF TRANSPORTATION**

**SCHEDULE OF QUANTITIES, CABLE PLAN, PHASE DESIGNATION  
DIAGRAM, & EMERGENCY VEHICLE PREEMPTION SEQUENCE  
US RTE 41 (SKOKIE HWY) AT STEARNS SCHOOL ROAD**

SCALE: N.A. SHEET NO. OF SHEETS STA. TO STA.

F.A.P. RTE. 346	SECTION 2011-042-TS	COUNTY LAKE	TOTAL SHEETS 62	SHEET NO. 45
CONTRACT #: 60P49			GHA #4085.874	
ILLINOIS FED. AID PROJECT				