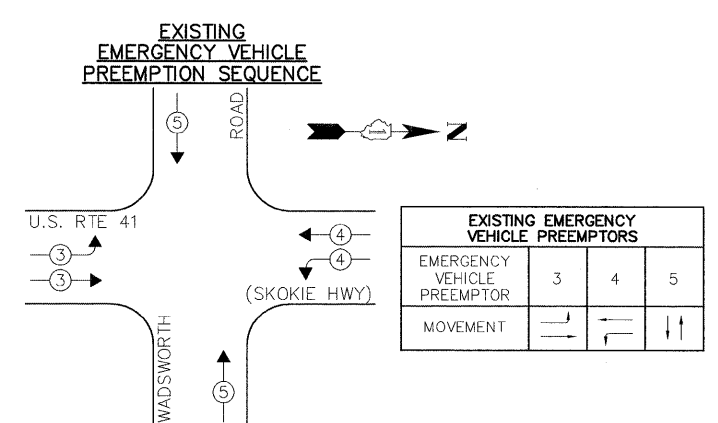
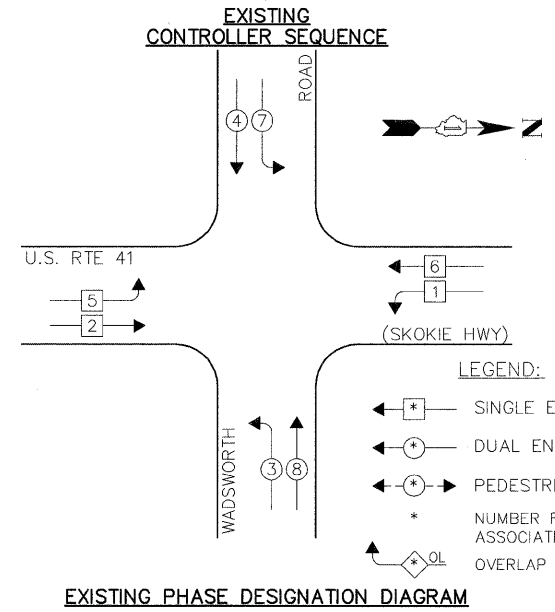
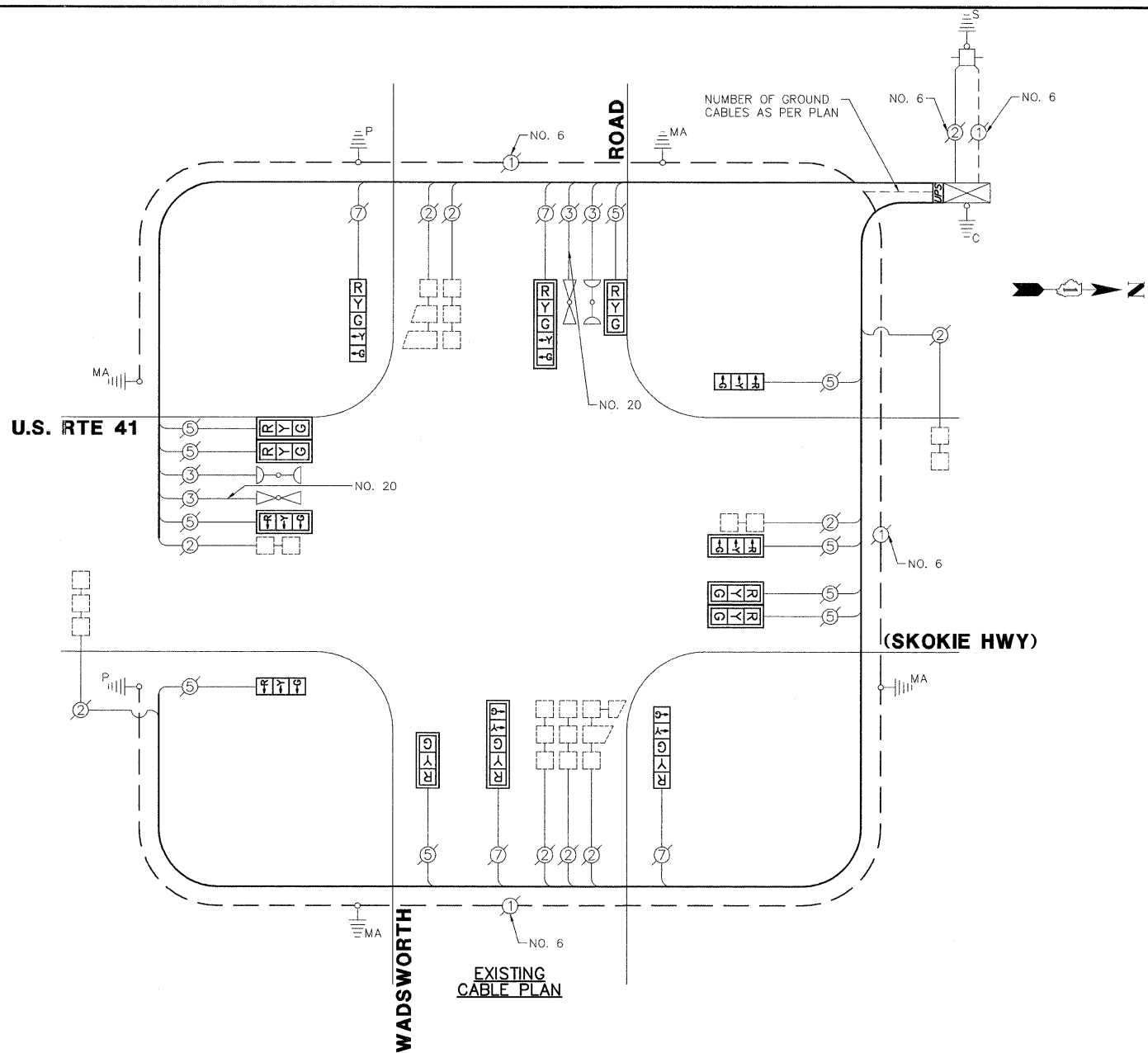


SCHEDULE OF QUANTITIES
U.S. RTE 41 (SKOKIE HIGHWAY) AT WADSWORTH ROAD

NO.	QUANT.	UNIT	DESCRIPTION
1.	40	SQ FT	PORTLAND CEMENT CONCRETE SIDEWALK 5 INCH
2.	1	EACH	MAINTENANCE OF EXISTING TRAFFIC SIGNAL INSTALLATION
3.	1	EACH	REMOVE EXISTING TRAFFIC SIGNAL EQUIPMENT
4.	1	EACH	UNINTERRUPTIBLE POWER SUPPLY
5.	2	EACH	SIGNAL HEAD, LED, 1-FACE, 3-SECTION, BRACKET MOUNTED, RETROFIT
6.	8	EACH	SIGNAL HEAD, LED, 1-FACE, 3-SECTION, MAST ARM MOUNTED, RETROFIT
7.	2	EACH	SIGNAL HEAD, LED, 1-FACE, 5-SECTION, MAST ARM MOUNTED, RETROFIT
8.	2	EACH	SIGNAL HEAD, LED, 1-FACE, 5-SECTION, BRACKET MOUNTED, RETROFIT



I.D.O.T. TRAFFIC SIGNAL INSTALLATION ELECTRICAL SERVICE REQUIREMENTS					TOTAL WATTAGE
TYPE	NO. LAMPS	WATTAGE INCAND.	L.E.D.	% OPERATION	
SIGNAL (RED)	14	135	17	0.50	119.0
SIGNAL (YELLOW)	14	135	25	0.25	87.5
SIGNAL (GREEN)	14	135	15	0.25	52.5
ARROW	8	135	12	0.10	9.6
PED. SIGNAL	-	90	25	1.00	-
CONTROLLER	1	-	100	1.00	100.0
LUMINAIRE	-	-	250	0.50	-
L.E.D. ST. NAME SIGN	-	-	64	0.50	-
VIDEO SYSTEM	-	-	150	1.00	-
BATTERY BACKUP	1	-	25	1.00	25.0
ILLUMINATED SIGN	-	-	25	0.05	-
TOTAL =					393.6

ENERGY COSTS - BILLED TO: IDOT DISTRICT 1
(ADDRESS) 201 WEST CENTER COURT
(ADDRESS) SCHAUMBURG, IL 60196
ENERGY SUPPLY - CONTACT: ALICE TAYLOR
PHONE: 847.816.5458
COMPANY: COMED

THE TRAFFIC SIGNAL CONTROL EQUIPMENT FOR THIS PROJECT SHALL BE "EAGLE" TO MATCH THE EXISTING ADJACENT SYSTEM.

FILE NAME = 4085.874-TR1.dwg	USER NAME = ZACH WALLSTEN	DESIGNED - JRD	REVISED -
PLOT SCALE = 1" = .0833'	CHECKED - KLB	DRAWN - JRM	REVISED -
PLOT DATE = 6/30/2011	DATE - 6/30/2011		REVISED -

STATE OF ILLINOIS
DEPARTMENT OF TRANSPORTATION

SCHEDULE OF QUANTITIES, CABLE PLAN, PHASE DESIGNATION DIAGRAM, & EMERGENCY VEHICLE PREEMPTION SEQUENCE
U.S. RTE 41 (SKOKIE HWY) AT WADSWORTH ROAD

F.A.P. RTE. 346	SECTION 2011-042-TS	COUNTY LAKE	TOTAL SHEETS 62	SHEET NO. 47
CONTRACT # 60P49			GHA #4085.874	
ILLINOIS FED. AID PROJECT				