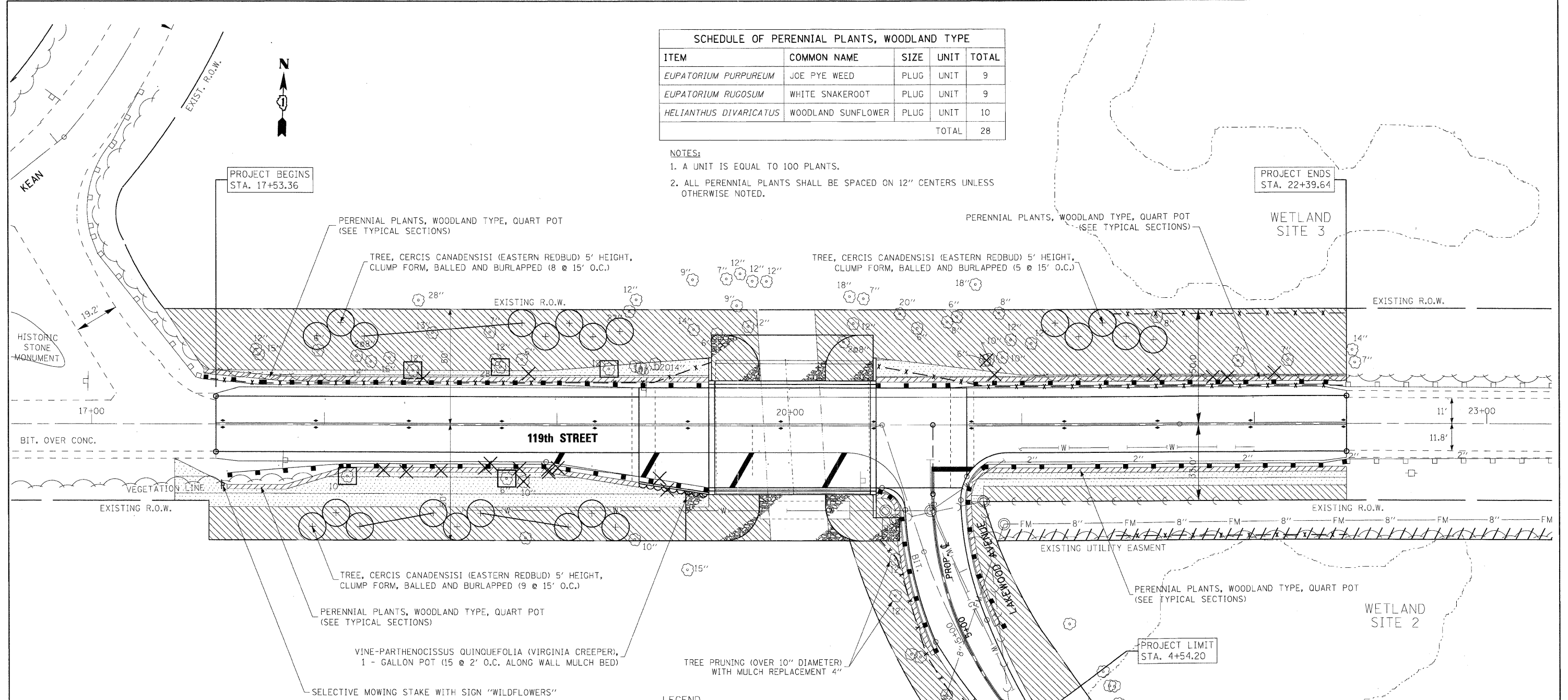


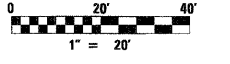
SCHEDULE OF PERENNIAL PLANTS, WOODLAND TYPE				
ITEM	COMMON NAME	SIZE	UNIT	TOTAL
EUPATORIUM PURPUREUM	JOE PYE WEED	PLUG	UNIT	9
EUPATORIUM RUGOSUM	WHITE SNAKEROOT	PLUG	UNIT	9
HELIANTHUS DIVARICATUS	WOODLAND SUNFLOWER	PLUG	UNIT	10
TOTAL				28

NOTES:
 1. A UNIT IS EQUAL TO 100 PLANTS.
 2. ALL PERENNIAL PLANTS SHALL BE SPACED ON 12" CENTERS UNLESS OTHERWISE NOTED.



- LEGEND**
- COMPOST FURNISH AND PLACE, 4", WITH SEEDING, CL 4 AND EROSION CONTROL BLANKET
 - INTERSEEDING, CLASS 4 (MODIFIED) - WOODLAND TYPE MIX
 - PERENNIAL PLANTS, WOODLAND TYPE
 - TREE, CERCIS CANADENSIS (EASTERN REDBUD) 5' HEIGHT, CLUMP FORM, BALLED AND BURLAPPED
 - VINE-PARTHENOCISSUS QUINQUEFOLIA (VIRGINIA CREEPER), 1 - GALLON POT
 - TREE REMOVAL
 - TREE TRUNK PROTECTION
 - TEMPORARY FENCE
 - EXISTING UTILITY EASMENT

PERENNIAL PLANT CARE SCHEDULE	
ACTIVITY	TIME
PLANT PERENNIALS AS PER PLAN	MAY 1 - JUNE 15 AUGUST 15 - SEPTEMBER 15
MULCH PERENNIAL BEDS	24 HOURS AFTER PLANTING
INSTALL SELECTIVE MOW STAKES AS PER PLAN OR DIRECTION OF RE	PRIOR TO PERIOD OF ESTABLISHMENT INSPECTION
PERENNIAL PLANT PERIOD OF ESTABLISHMENT - WATER ONCE EVERY 7 DAYS FOR 4 WEEKS	WITHIN 30 DAYS AFTER PLANTING
REPLACE DEAD PLANTS	AFTER PERIOD OF ESTABLISHMENT INSPECTION
PERENNIAL PLANT CARE (FIRST CYCLE)	30 DAYS AFTER PERIOD OF ESTABLISHMENT INSPECTION
PERENNIAL PLANT CARE (SECOND CYCLE)	60 DAYS AFTER PERIOD OF ESTABLISHMENT INSPECTION
PERENNIAL PLANT CARE (THIRD CYCLE)	90 DAYS AFTER PERIOD OF ESTABLISHMENT INSPECTION
SUPPLEMENTAL WATERING	USE AFTER PERIOD OF EST. INSP. AS DIRECTED BY RESIDENT ENGINEER



LOCO, INC.
 CONSULTING ENGINEERS
 1560 WALL ST., SUITE 222
 NAPERVILLE, ILLINOIS 60563 PH: (630) 577-9100

DESIGNED - MJY	REVISED -
DRAWN - ST, TSC	REVISED -
CHECKED - MJY, SLV	REVISED -
DATE - 07/01/2011	REVISED -

**STATE OF ILLINOIS
 DEPARTMENT OF TRANSPORTATION**

**LANDSCAPING DETAILS
 119TH STREET OVER MILL CREEK**
 SCALE: NONE SHEET NO. 1 OF 1 SHEETS STA. 17+53.36 TO STA. 22+39.64

O.R. RTE. 213	SECTION 0102B-1	COUNTY COOK	TOTAL SHEETS 54	SHEET NO. 14
D-91-052-02		CONTRACT NO. 62390		
FED. ROAD DIST. NO. ILLINOIS FED. AID PROJECT				