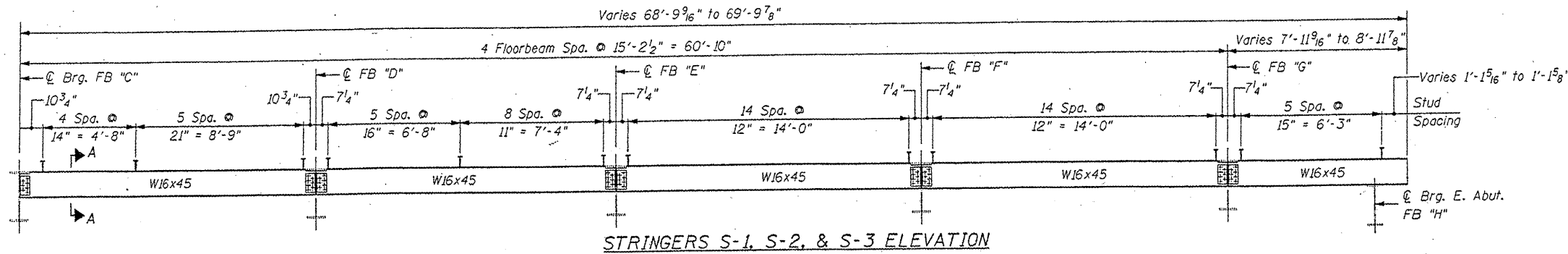
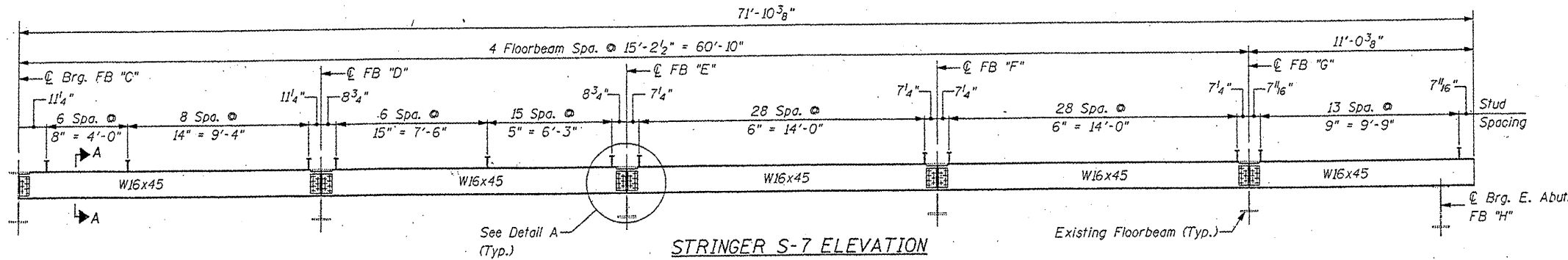


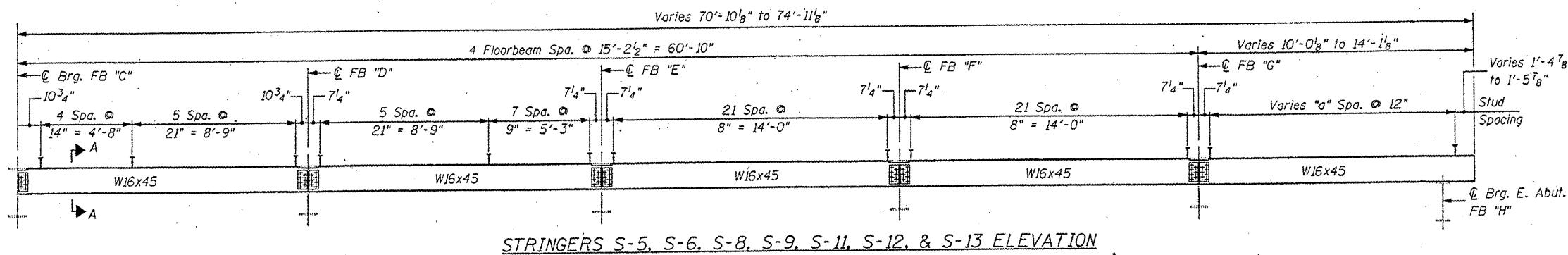
STATE OF ILLINOIS
DEPARTMENT OF TRANSPORTATION



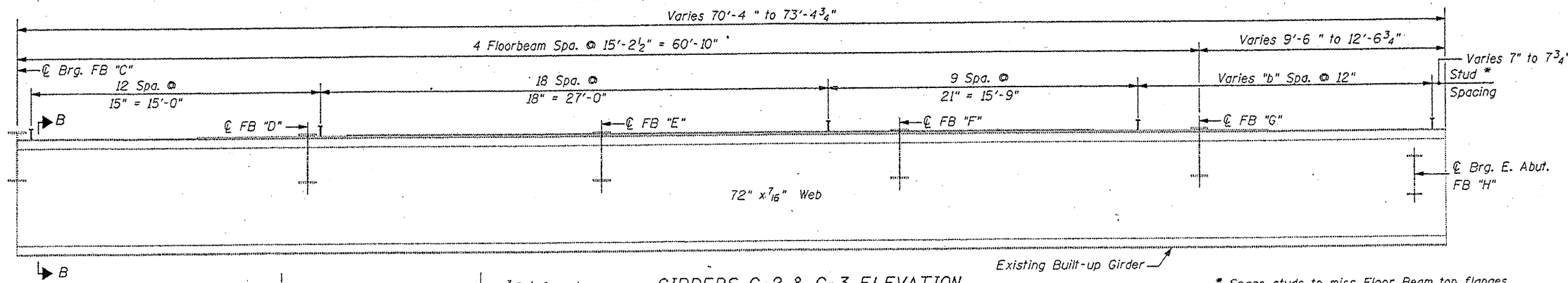
STRINGERS S-1, S-2, & S-3 ELEVATION



STRINGER S-7 ELEVATION

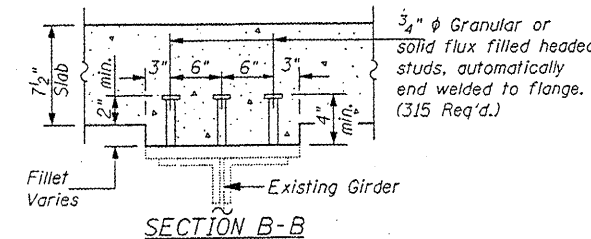
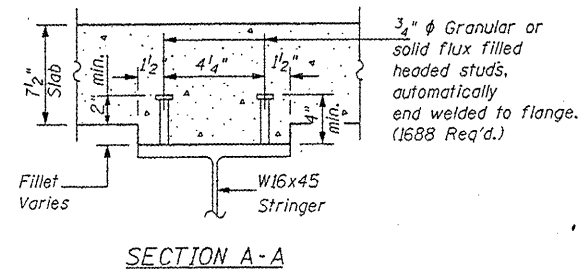
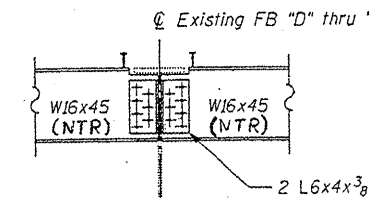


STRINGERS S-5, S-6, S-8, S-9, S-11, S-12, & S-13 ELEVATION



GIRDERS G-2 & G-3 ELEVATION

FOR INFORMATION ONLY



* Space studs to miss Floor Beam top flanges.

Stringer	"a"	Girder	"b"
S-5	8	G-2	12
S-6	9	G-3	15
S-8	10		
S-9	10		
S-11	11		
S-12	12		
S-13	12		

EAST APPROACH SPAN
FRAMING DETAILS
RUBY STREET (F.A.P.112) OVER
DES PLAINES RIVER
WILL COUNTY
STRUCTURE NUMBER 099-9901

FILE NAME =	USER NAME = mdyje	DESIGNED -	REVISED -	STATE OF ILLINOIS DEPARTMENT OF TRANSPORTATION	RUBY STREET OVER DES PLAINES RIVER SN 099-9901	F.A.P. RTE.	SECTION	COUNTY	TOTAL SHEETS	SHEET NO.	
en:\pwwork\pwwork\mdyje\08148931\011158	shp-plan.dgn	DRAWN -	REVISED -			112	M-BDR-1	WILL	66	23	
PLOT SCALE = 1/8" = 1'-0"	CHECKED -	REVISED -				CONTRACT NO. 62714					
PLOT DATE = 6/23/2011	DATE -	REVISED -				ILLINOIS FED. AID PROJECT					
						SCALE:	SHEET NO. 14 OF 30 SHEETS	STA.	TO STA.		