

Note A
 4-1/8" turned bolts 7/8" thread
 4-beveled washers
 Drill holes in flange in shop with bev. slab
 in place. Shop bev. slab loose.
 1 bev. slab 12" x 4" x 1/2"
 1 pin 3/8", 2 recessed nuts.
 1 slab 12" x 4" x 1/2"
 1 slab 16" x 2 1/2" x 1/4" 4 anchor bolts 1 1/2" diam. x 2'-0"

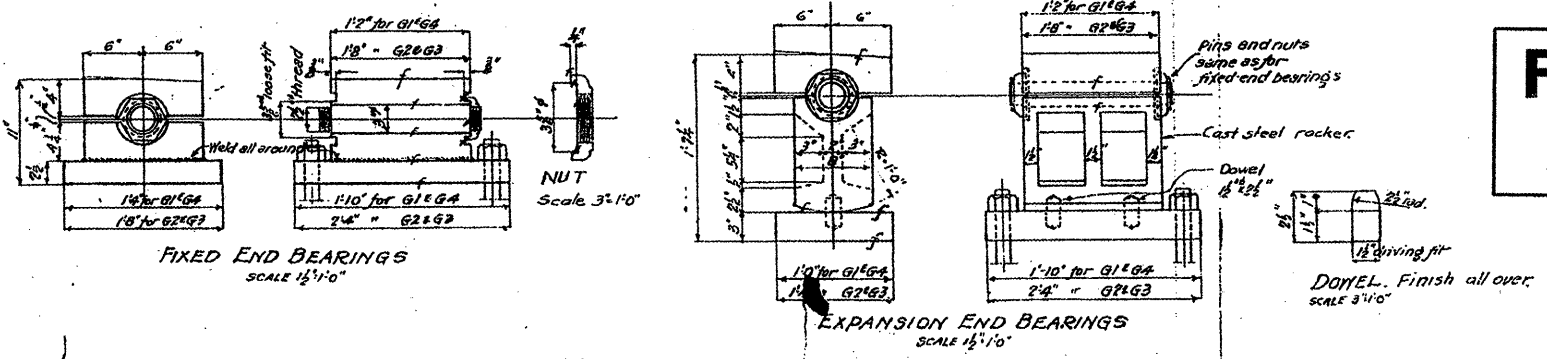
See Note A of G1
 1 bev. slab 12" x 4" x 1/2"
 1 pin 3/8" 2 recessed nuts
 1 slab 12" x 4" x 1/2"
 1 slab 20" x 2 1/2" x 1/4" 4 anchor bolts 1 1/2" diam. x 2'-0"
 76% of 1/4" of end bearings

See Note A of other end
 1 Slab 12" x 4" x 1/2"
 1 Cast Steel Rocker
 1 Pin 3/8" 2 recessed nuts
 1 Slab 12" x 3" x 1/4"
 2 Anchor Bolts 1 1/2" x 2'-0"

General Notes.
 Rivets 1/2" unless noted
 Open holes 1/8" unless noted

All anchor bolts are substructure steel.

This Drawing is supplemented
 and modified by Drwg. #26-A
 Mar. 21, 1934



FOR INFORMATION ONLY

APPROACH GIRDERS
 DOUBLE LEAF TRUNNION BASCULE BRIDGE
 OVER
 THE ILLINOIS WATERWAY
 AT
 RUBY ST, JOLIET, ILL.

DESIGNED BY
 THE SCHERZER ROLLING LIFT BRIDGE CO.
 MONADNOCK BLOCK, CHICAGO, ILL.

DRAWN BY E.A.P.
 TRACED BY H.W. BOY.
 CHECKED BY B.T.D.
 REVISED 1-10-1933
 1-11-1934

SCALE: 1/4" = 1'-0" unless noted
 DATE: APRIL 19, 1933

SHEET NO. 1343-25

FILE NAME =	USER NAME = mdjja	DESIGNED -	REVISED -
ca:\pwwork\p\MDOT\MDIY\JA\0148931\dl1158	ee.dgn	DRAWN -	REVISED -
	PLOT SCALE = 103.1218" / IN.	CHECKED -	REVISED -
	PLOT DATE = 6/27/2009	DATE -	REVISED -

STATE OF ILLINOIS
 DEPARTMENT OF TRANSPORTATION

RUBY STREET OVER DES PLAINES RIVER
 SN 099-9901

SCALE: SHEET NO. 15 OF 30 SHEETS STA. TO STA.

F.A.P. RTE.	SECTION	COUNTY	TOTAL SHEETS	SHEET NO.
112	M-BDR-1	WILL	66	24
			CONTRACT NO. 62714	
ILLINOIS FED. AID PROJECT				