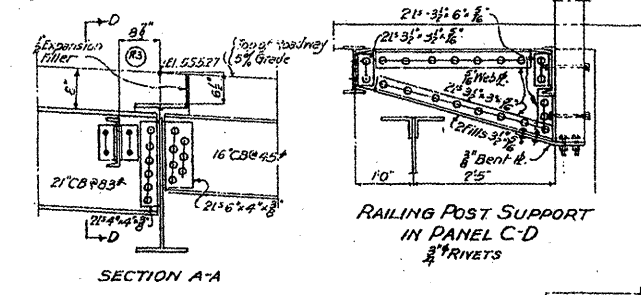
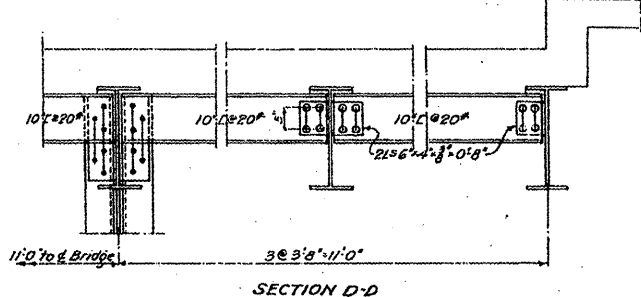


FLOOR BEAMS & ANCHORAGE AT POINT C EAST LEAF

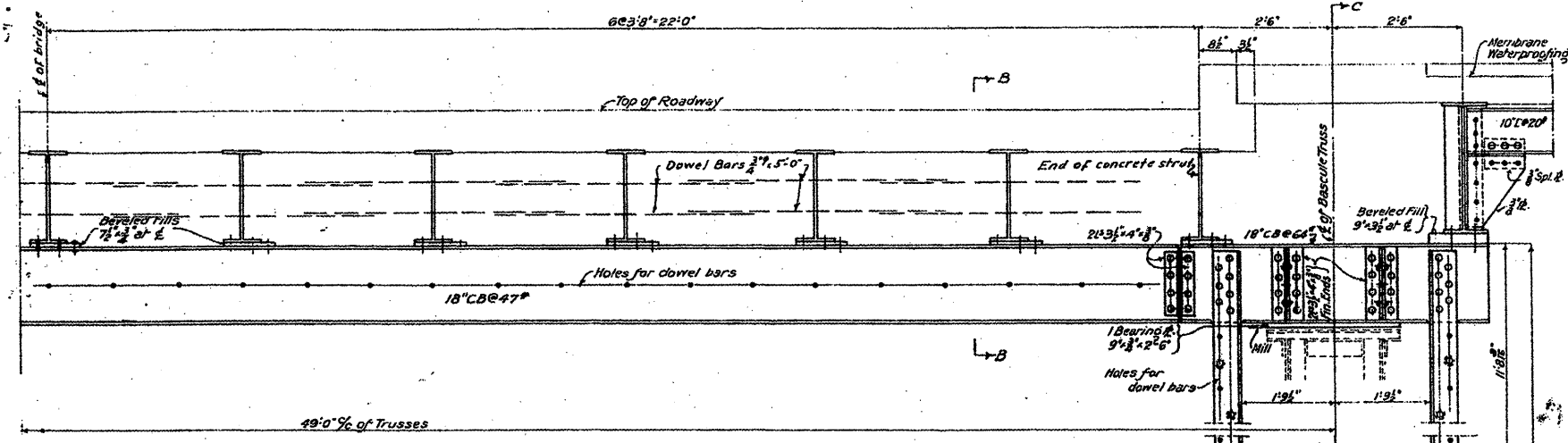


SECTION A-A

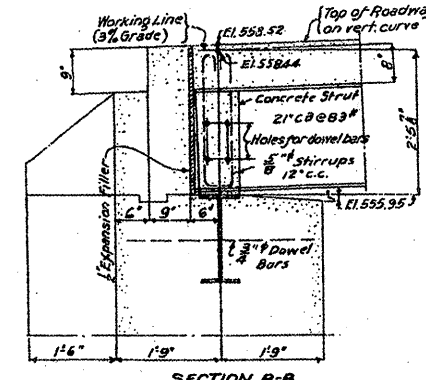
RAILING POST SUPPORT IN PANEL C-D 3/4" RIVETS



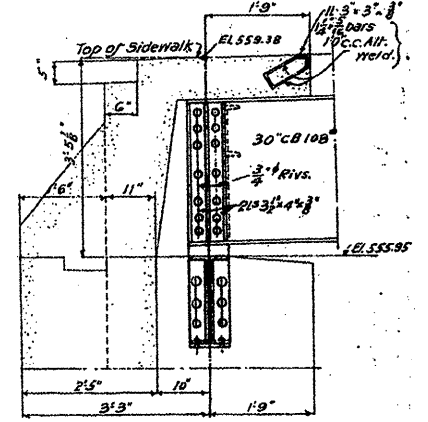
SECTION D-D



ANCHORAGE GIRDER & COLUMNS (substructure steel) WEST LEAF



SECTION B-B



SECTION C-C

General Notes  
Rivets 3/4" unless noted  
Open Holes 1/2" unless noted  
For reaming of holes see specifications.

ANCHORAGE GIRDERS & COLUMNS  
DOUBLE LEAF TRUNNION BASCULE BRIDGE  
OVER  
THE ILLINOIS WATERWAY  
AT  
RUBY ST., JOLIET, ILL.

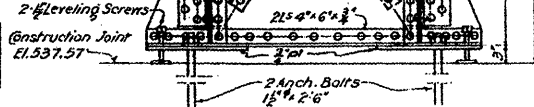
DESIGNED BY  
THE SCHERZER ROLLING LIFT BRIDGE CO.  
MONADNOCK BLOCK, CHICAGO, ILL.

DRAWN BY P.L.D.

SCALE: 1/4" = 1'-0"

**FOR INFORMATION ONLY**

REVISIONS	DATE	INITIALS
R3 Expansion joint in Sec. AA	10-23-36	G. J.



FILE NAME =  
c:\pwwork\p\1007\MIDYJA\d0148931\vd1156

USER NAME = midyja  
ao.dgn  
PLOT SCALE = 1/8" = 1'-0"  
PLOT DATE = 6/27/2009

DESIGNED -  
DRAWN -  
CHECKED -  
DATE -

REVISED -  
REVISED -  
REVISED -  
REVISED -

STATE OF ILLINOIS  
DEPARTMENT OF TRANSPORTATION

RUBY STREET OVER DES PLAINES RIVER  
SN 099-9901  
SCALE: SHEET NO. 17 OF 30 SHEETS STA. TO STA.

F.A.P. RTE.	SECTION	COUNTY	TOTAL SHEETS	SHEET NO.
112	M-BDR-1	WILL	66	26

CONTRACT NO. 62714  
ILLINOIS FED. AID PROJECT