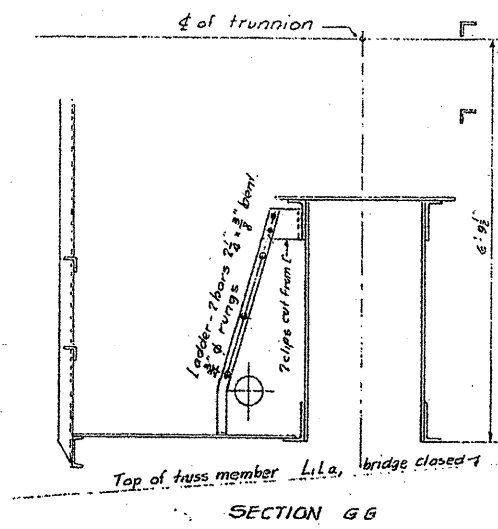
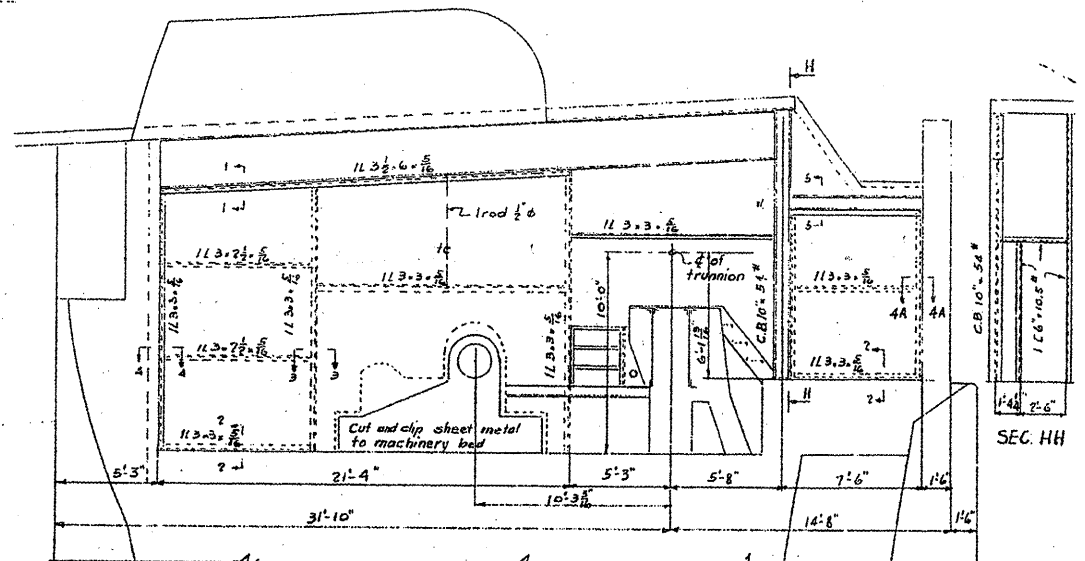


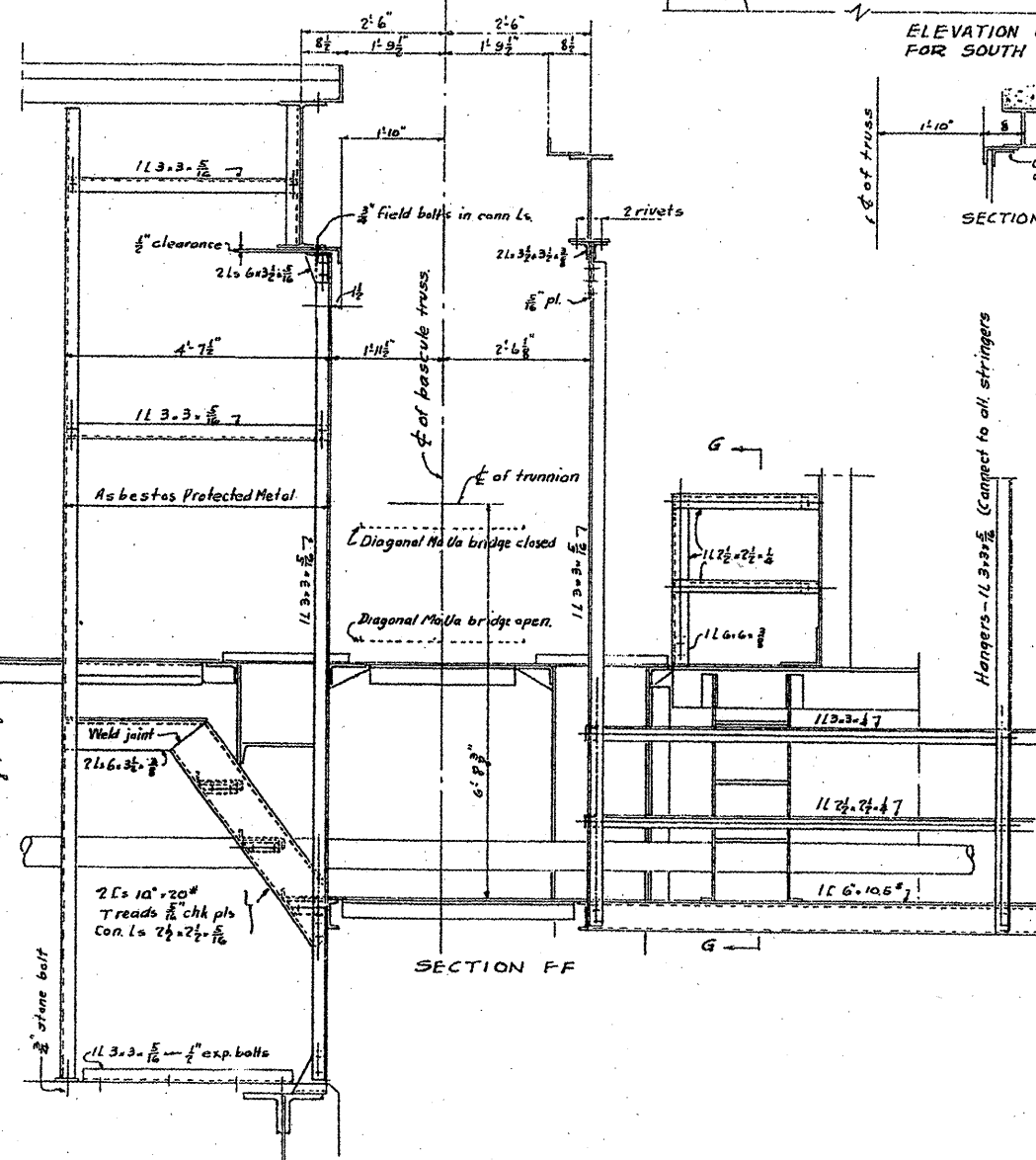
PLAN OF PLATFORMS AND STAIRS AT SOUTHEAST TRUNNION
OTHERS SIMILAR.



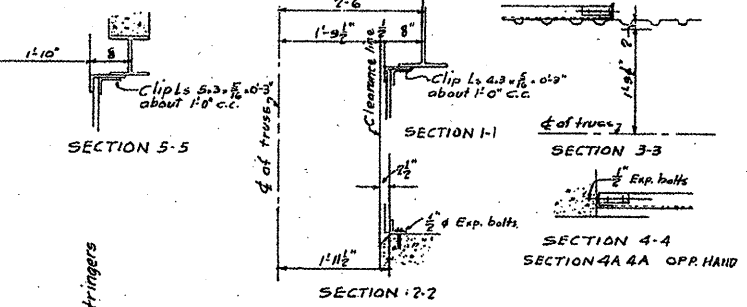
SECTION G G



ELEVATION OF MACHINERY ENCLOSURE
FOR SOUTH SIDE OF EAST PIER. OTHERS SIMILAR



SECTION F F



For Section C C, see Sheet No. 17
For Section D D see Sheet No. 18.

FOR INFORMATION ONLY

MACHINERY ENCLOSURES
PLATFORMS AND STAIRS
DOUBLE LEAF TRUNNION BASCULE BRIDGE
OVER
THE ILLINOIS WATERWAY
AT
RUBY ST. JOLIET, ILL.

DESIGNED BY
THE SCHERZER ROLLING LIFT BRIDGE CO.
MONADNOCK BLOCK, CHICAGO, ILL.
DRAWN BY A.L.R.
TRACED BY G.A.K.
CHECKED BY I.E.
SCALE: 1/4"=1'-0" and 3/8"=1'-0"
DATE: SEPT. 6, 1933

FILE NAME: \\pwwork\pwwdtd\MDYJAN0148931\DJ1150	USER NAME: midjjo	DESIGNED: RTB	REVISED: -	STATE OF ILLINOIS DEPARTMENT OF TRANSPORTATION	RUBY STREET OVER DES PLAINES RIVER SN 099-9901	F.A.P. RTE. NO. 112	SECTION M-BDR-1	COUNTY WILL	TOTAL SHEETS 66	SHEET NO. 39
PLOT SCALE: 1/8"=1'-0"	CHECKED: -	REVISED: -	SCALE: SHEET NO. 30 OF 30 SHEETS			STA. TO STA.	CONTRACT NO. 62714			
PLOT DATE: 6/27/2009	DATE: -	REVISED: -	ILLINOIS FED. AID PROJECT							