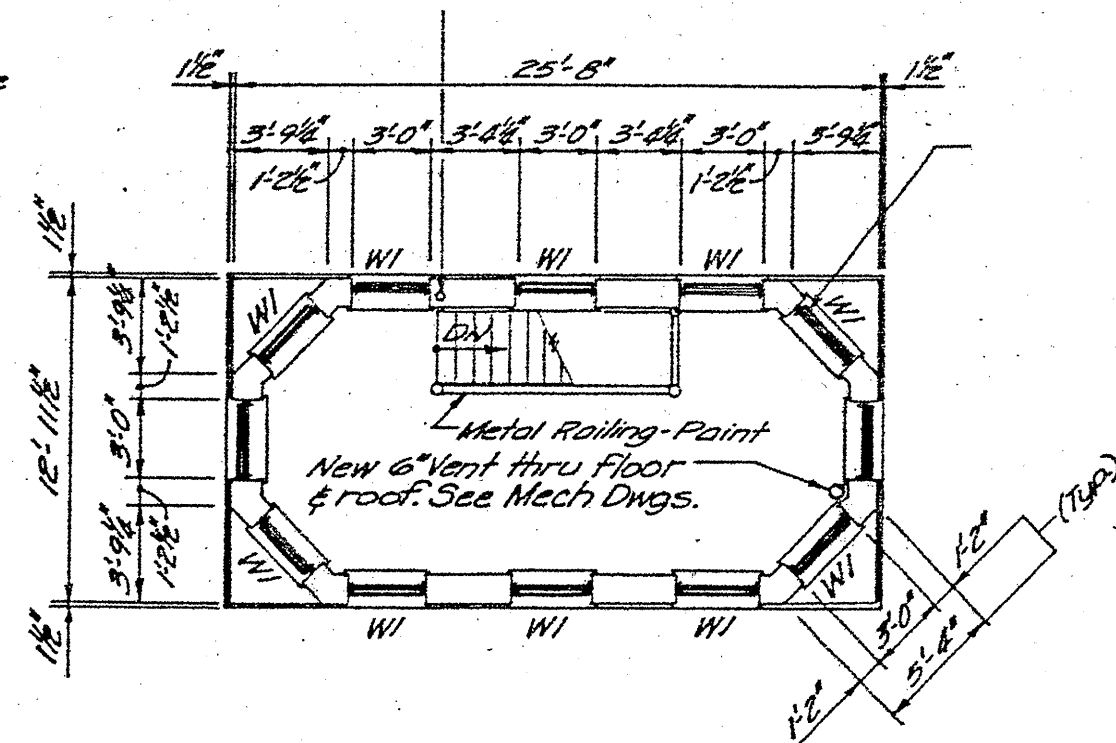


INTERIOR SOUTH WALL ELEVATION



OPERATORS ROOM PLAN-2nd FLOOR

NOTE:

REMOVE AND REPLACE OR REPAIR PLASTER WALLS AND CEILING AS NECESSARY.

PAINT INTERIOR WALLS WHEN REPAIRS ARE COMPLETE.

COST INCLUDED IN THE COST OF BRIDGE TENDER HOUSE REHABILITATION.

FOR ADDITIONAL REPAIRS TO THE MACHINERY ROOM SEE SHEET 38A

FILE NAME =	USER NAME = msdyje	DESIGNED -	REVISED -	STATE OF ILLINOIS DEPARTMENT OF TRANSPORTATION	RUBY STREET OVER DES PLAINES RIVER BRIDGE HOUSE INTERIOR WALL PAINTING	F.A.P. RTE.	SECTION	COUNTY	TOTAL SHEETS	SHEET NO.
of:\pwr\work\pwr\dot\msdyje\00146931\0111584	sht-plan.dgn	DRAWN -	REVISED -			112	M-BDR-1	WILL	66	45
PLOT SCALE = 1/8" = 1'-0"	CHECKED -	REVISED -	REVISED -			CONTRACT NO. 62714			ILLINOIS FED. AID PROJECT	
PLOT DATE = 5/25/2011	DATE -	REVISED -	REVISED -			SCALE:	SHEET NO. 4 OF 5 SHEETS	STA.		