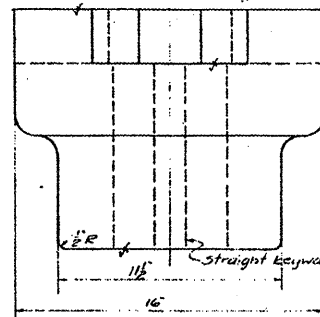
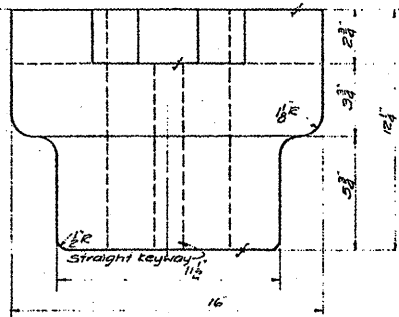


NOTE: Finish faces of Jaws for push fit.

0.250" counter bore
0.222"

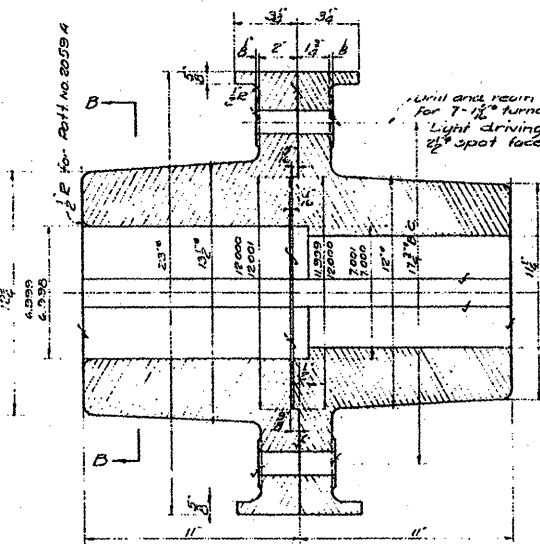
End of shaft 35



End of Encoder shaft

JAW COUPLING
PATT. NO. 2058-5077
CAST STEEL

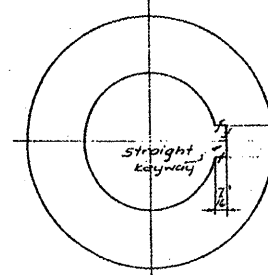
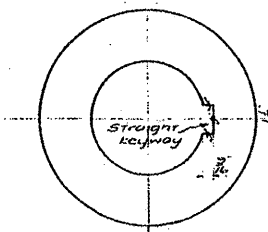
JAW COUPLING
PATT. NO. 2058A-5077
CAST STEEL



Wash and ream assembled in shop for 7-1/2" turned bolts to 43. Light driving fit on bolts 1/2" spot face.

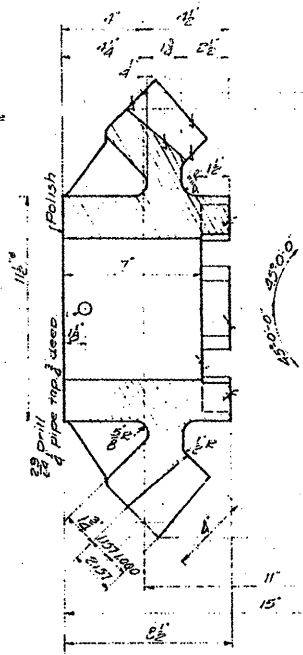
FLANGED COUPLING
PATT. NO. 2059-5077
PATT. NO. 2059A-5077
CAST STEEL

FLANGED COUPLING
PATT. NO. 2060-5077
PATT. NO. 2060A-5077
CAST STEEL

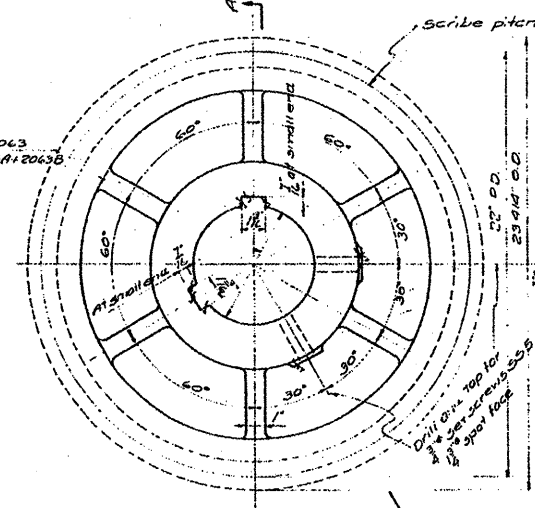
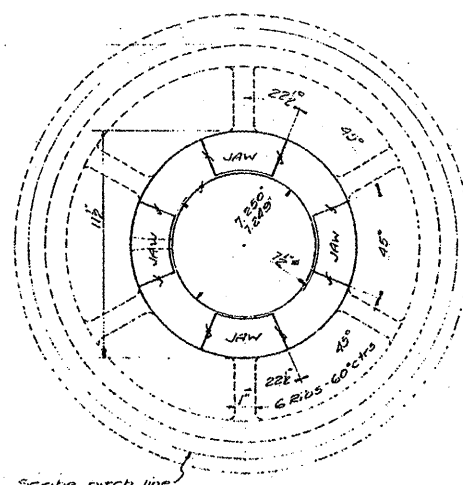


SECTION B-B

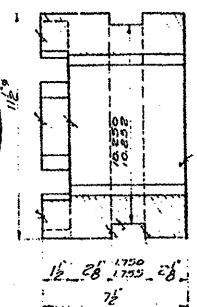
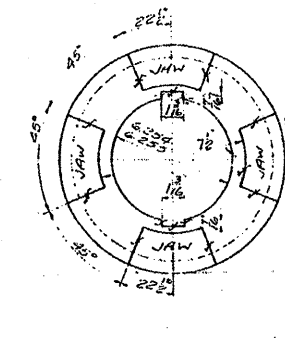
Bore 0.250" for patt no 2063
Bore 0.251" for patt no 2063A
Bore 0.252" for patt no 2063B



22 TEETH I.D.P. 4FACE
22" PITCH DIA.
14 1/2 STD INVOLUTE CUT TEETH
BEVEL GEAR F
PATT. NO. 2061-5077
CAST STEEL



BEVEL GEAR G
PATT. NO. 2063-5077
PATT. NO. 2063A-5077
PATT. NO. 2063B-5077
CAST STEEL



CLUTCH
PATT. NO. 2062-5077
CAST STEEL
NOTE: Jaws of Patt. No. 2061-2062 to have push fit.

- REQUIRED LIST
- 2 JAW COUPLINGS PATT. NO. 2058-5077
 - 2 " " " 2058A-5077
 - 2 FLANGED COUPLINGS " " 2059-5077
 - 2 " " " 2060-5077
 - 2 " " " 2060A-5077
 - 4 BEVEL GEARS " " 2061-5077
 - 4 CLUTCHES " " 2062-5077
 - 8 BEVEL GEARS " " 2063-5077
 - 2 " " " 2063A-5077
 - 2 " " " 2063B-5077
 - 2 FLANGED COUPLINGS " " 2059A-5077

FOR INFORMATION ONLY

NOTES:
Spec. for steel castings A.S.T.M
A27-24 Std. 1930, Class B. Med.
grade annealed.