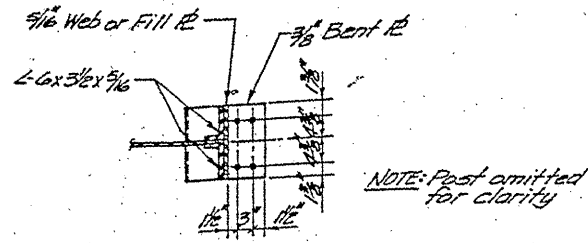
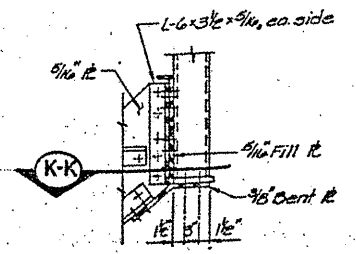


**RAILING FOR PANEL C-D ON APPROACH SPAN**  
(For Information Only: No Repairs)

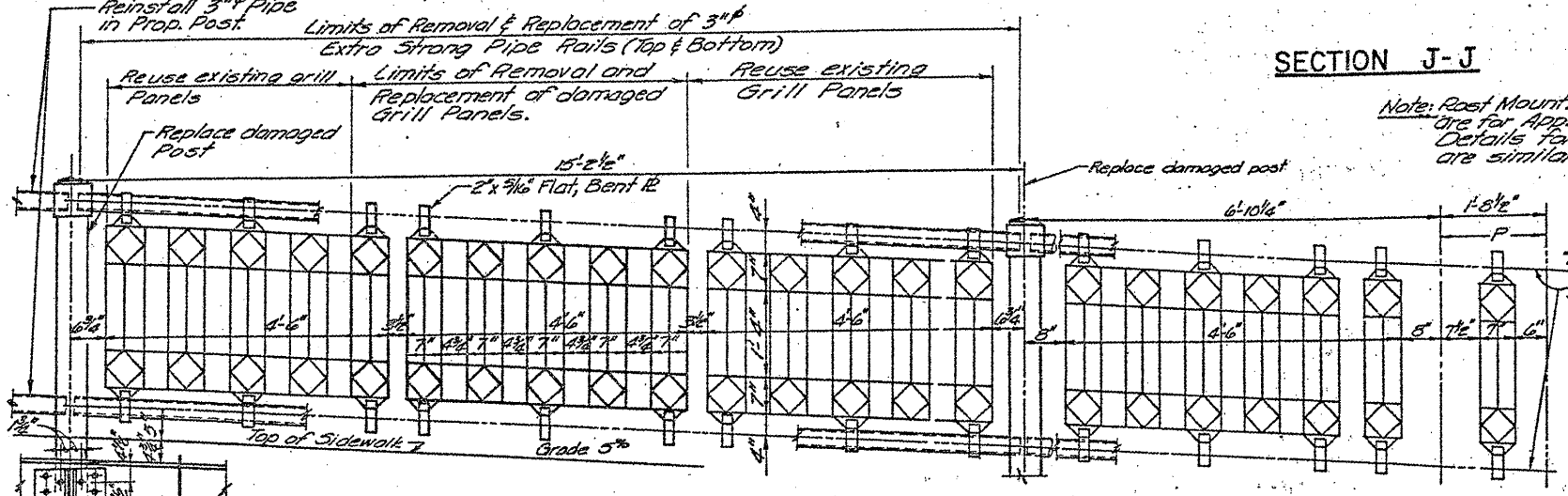


**SECTION K-K**



**SECTION J-J**

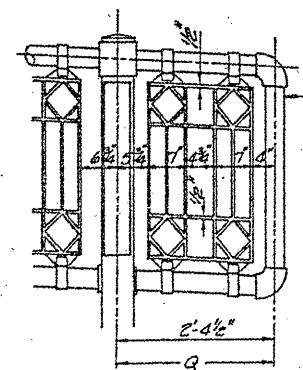
Note: Post Mounting Details shown are for Approach Span. Details for Bascule Spans are similar.



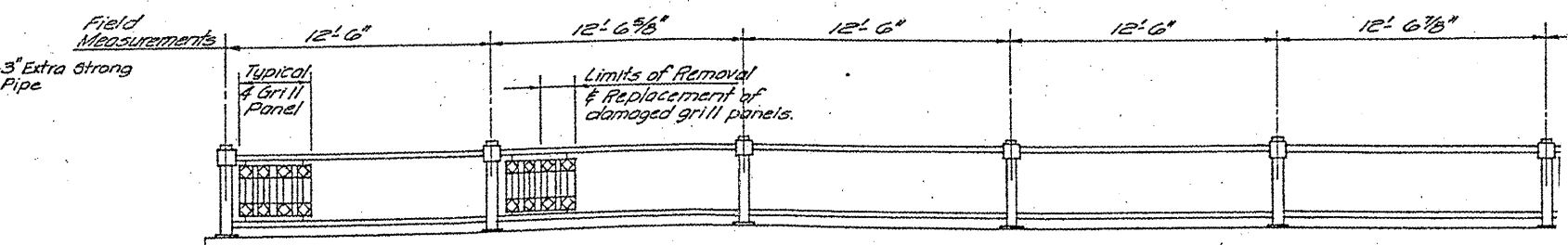
**SOUTH RAILING FOR PANEL FG ON APPROACH SPAN**  
(Panels DE, EF & GH, North and South and Panel FG, North are similar, with no repairs.)

**NORTH RAILING FOR PANEL G-H ON APPROACH SPAN**  
(No repairs)

**FOR INFORMATION ONLY**



**DETAILS AT Q**  
(For Information Only: No repairs)



Retaining wall ornamental railing details are similar to bridge spans ornamental railing details. (No shop drawings are available.)

**RAILING AT SOUTHWEST RETAINING WALL**

All Railing to be salvaged, repaired where shown and reinstalled, with new anchor bolts.

FILE NAME =	USER NAME = midyo	DESIGNED - RTB	REVISED -	<b>STATE OF ILLINOIS DEPARTMENT OF TRANSPORTATION</b>	<b>RUBY STREET OVER DES PLAINES RIVER HANDRAIL REPAIRS</b>	F.A.P. RTE. 112	SECTION M-BDR-1	COUNTY WILL	TOTAL SHEETS 66	SHEET NO. 65		
ei:\pw\work\pawdot\midyo\0148931\011150	sht-plan.dgn	DRAWN -	REVISED -			SCALE:	SHEET NO. 3 OF 3 SHEETS	STA.	TO STA.	ILLINOIS FED. AID PROJECT		
	PLOT SCALE = 1/8" = 1' / IN.	CHECKED -	REVISED -									
	PLOT DATE = 5/27/2011	DATE -	REVISED -									