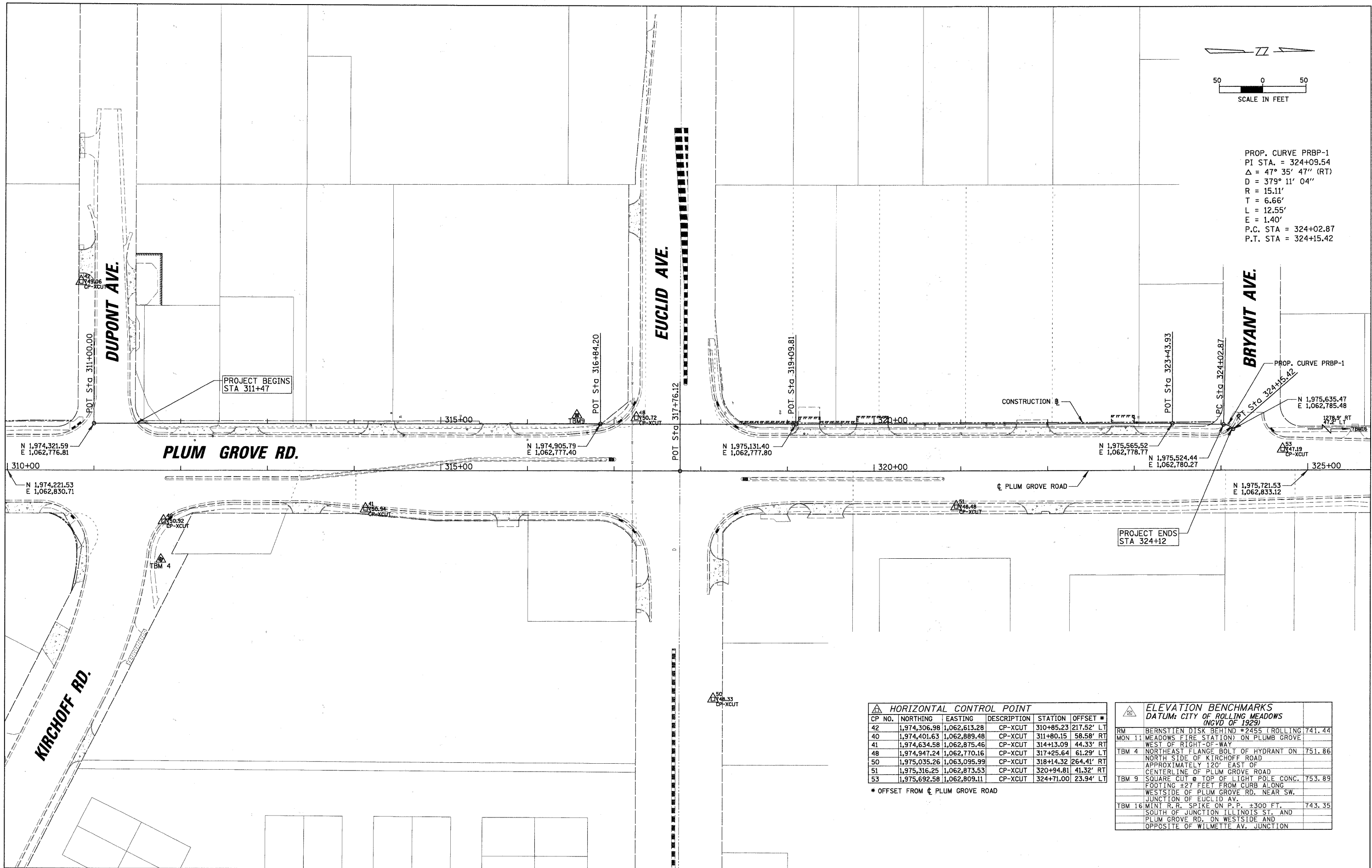


PROP. CURVE PRBP-1
 PI STA. = 324+09.54
 $\Delta = 47^\circ 35' 47''$ (RT)
 D = 379° 11' 04"
 R = 15.11'
 T = 6.66'
 L = 12.55'
 E = 1.40'
 P.C. STA = 324+02.87
 P.T. STA = 324+15.42



HORIZONTAL CONTROL POINT						
CP NO.	NORTHING	EASTING	DESCRIPTION	STATION	OFFSET *	
42	1,974,306.98	1,062,613.28	CP-XCUT	310+85.23	217.52' LT	
40	1,974,401.63	1,062,889.48	CP-XCUT	311+80.15	58.58' RT	
41	1,974,634.58	1,062,875.46	CP-XCUT	314+13.09	44.33' RT	
48	1,974,947.24	1,062,770.16	CP-XCUT	317+25.64	61.29' LT	
50	1,975,035.26	1,063,095.99	CP-XCUT	318+14.32	264.41' RT	
51	1,975,316.25	1,062,873.53	CP-XCUT	320+94.81	41.32' RT	
53	1,975,692.58	1,062,809.11	CP-XCUT	324+71.00	23.94' LT	

* OFFSET FROM ϕ PLUM GROVE ROAD

ELEVATION BENCHMARKS			
DATUM: CITY OF ROLLING MEADOWS (MVD OF 1929)			
RM	BERNSTEIN DISK BEHIND #2455 (ROLLING MEADOWS FIRE STATION) ON PLUMB GROVE WEST OF RIGHT-OF-WAY	741.44	
TBM 4	NORTHEAST FLANGE BOLT OF HYDRANT ON NORTH SIDE OF KIRCHOFF ROAD APPROXIMATELY 120' EAST OF CENTERLINE OF PLUM GROVE ROAD	751.86	
TBM 9	SQUARE CUT ϕ TOP OF LIGHT POLE CONC. FOOTING \pm 27 FEET FROM CURB ALONG WESTSIDE OF PLUM GROVE RD. NEAR SW. JUNCTION OF EUCLID AV.	753.89	
TBM 16	MINT R.R. SPIKE ON P.P. \pm 300 FT. SOUTH OF JUNCTION ILLINOIS ST. AND PLUM GROVE RD. ON WESTSIDE AND OPPOSITE OF WILMETTE AV. JUNCTION	743.35	

FILE NAME =	USER NAME = ESIDORCZ	DESIGNED - BMW	REVISED -
N:\ROLLINGMEADOWS\98361BR96A\Civil\BML98361BR96A_01.SHT		DRAWN - MYG	REVISED -
PLOT SCALE = 1" = 50'		CHECKED - JGS	REVISED -
PLOT DATE = 7/14/2011		DATE - 7/14/2011	REVISED -

**STATE OF ILLINOIS
 DEPARTMENT OF TRANSPORTATION**

PLUM GROVE ROAD BIKE PATH ALIGNMENT, TIES AND BENCHMARKS			
SCALE:	SHEET NO.	OF SHEETS	STA. TO STA.

F.A. RTE.	SECTION	COUNTY	TOTAL SHEETS	SHEET NO.
	07-00094-00-BT	COOK	18	4
CONTRACT NO. 63356				
ILLINOIS FED. AID PROJECT				