

F.A. RTE.	SECTION	COUNTY	TOTAL SHEETS	SHEET NO.
2585	07-00094-00-BT	COOK	18	1
		ILLINOIS	CONTRACT NO. 63356	

SHEET INDEX

- 1 COVER SHEET
- 2 GENERAL NOTES, IDOT STANDARDS AND TYPICAL SECTION
- 3 SUMMARY OF QUANTITIES AND EARTHWORK TABLE
- 4 ALIGNMENT, TIES AND BENCHMARKS
- 5-6 EXISTING CONDITIONS/REMOVAL PLAN
- 7-9 PLAN AND PROFILE
- 10-11 SESC DETAILS AND STANDARD NOTES
- 12-13 DISTRICT ONE STANDARDS
- 14-18 CROSS SECTIONS

STATE OF ILLINOIS
DEPARTMENT OF TRANSPORTATION
DIVISION OF HIGHWAYS
**PLANS FOR PROPOSED
FEDERAL AID HIGHWAY**

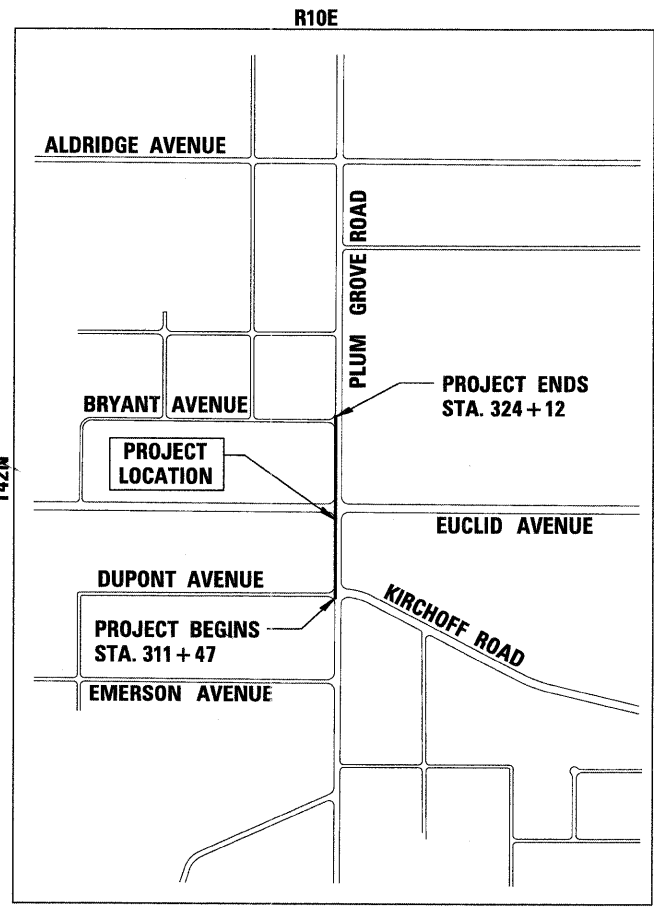
**FAU 2585 / PLUM GROVE ROAD
PLUM GROVE ROAD BIKE PATH
KIRCHOFF ROAD TO BRYANT AVENUE**

Section No.: 07-00094-00-BT

Project No.: CMM-8003 (808)

Job No.: C-91-225-07

**CITY OF ROLLING MEADOWS
COOK COUNTY**



LOCATION MAP
PALATINE TOWNSHIP
GROSS LENGTH = 1265 LINEAL FEET (0.24 MILES)
NET LENGTH = 1265 LINEAL FEET (0.24 MILES)

DESIGN DESIGNATION - MINOR ARTERIAL
TRAFFIC DATA:
EXISTING ADT ROAD = 28,200
EXISTING ADT (BIKE/PED) = <100
DESIGN ADT (BIKE/PED) = <100
POSTED SPEED = 35 MPH



Bryan M. Welch
ENGINEER
DATE: 6-30-11

BRYAN M. WELCH
ILLINOIS REGISTRATION No. 062-059072
EXPIRATION DATE: 11/30/2011

STATE OF ILLINOIS
DEPARTMENT OF TRANSPORTATION
DIVISION OF HIGHWAYS

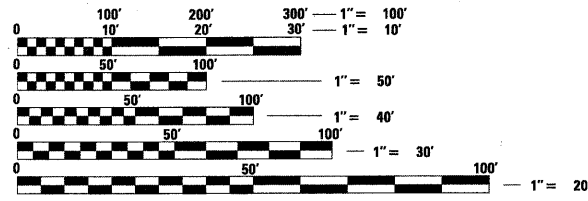
APPROVED: *July 1, 2011*
DATE: July 1, 2011
Fred A. Vogt
ROLLING MEADOWS, PUBLIC WORKS DIRECTOR

PASSED: *July 18, 2011*
DATE: July 18, 2011
Chris A. Heister
DISTRICT 1 ENGINEER OF LOCAL ROADS & STREETS

RELEASING FOR BID
BASED ON LIMITED
REVIEW: *July 18, 2011*
DATE: July 18, 2011
Diana M. O'Neil
DEPUTY DIRECTOR OF HIGHWAYS, REGION 1 ENGINEER

**PRINTED BY THE AUTHORITY
OF THE STATE OF ILLINOIS**

THE CONTRACTOR SHALL BE SOLELY RESPONSIBLE FOR JOB SITE SAFETY AS WELL AS SUPERVISION/DIRECTION AND MEANS/METHODS OF CONSTRUCTION.



FULL SIZE PLANS HAVE BEEN PREPARED USING STANDARD ENGINEERING SCALES. REDUCED SIZED PLANS WILL NOT CONFORM TO STANDARD SCALES. IN MAKING MEASUREMENTS ON REDUCED PLANS, THE ABOVE SCALES MAY BE USED.

J.U.L.I.E.
JOINT UTILITY LOCATION INFORMATION FOR EXCAVATION
1-800-892-0123
OR 811

CONTRACT NO. 63356

CHRISTOPHER B. BURKE ENGINEERING LTD.
 9575 West Higgins Road, Suite 600
 Rosemont, Illinois 60018
 (847) 823-0500
 PROFESSIONAL DESIGN FIRM NO. 184-001175
 EXPIRATION DATE: 4/30/12

PROGRAM AND OFFICE ENGINEER:
 CHARLES F. RIDDLE, P.E.
 847-705-4406
 SCHAMBURG, IL

GENERAL NOTES

ALL CONSTRUCTION SHALL BE DONE IN ACCORDANCE WITH:
 "STANDARD SPECIFICATIONS FOR ROAD AND BRIDGE CONSTRUCTION ADOPTED JANUARY 1, 2007;
 "SUPPLEMENTAL SPECIFICATIONS AND RECURRING SPECIAL PROVISIONS ADOPTED JANUARY 1, 2011
 LATEST EDITION OF THE "ILLINOIS MANUAL ON UNIFORM TRAFFIC CONTROL DEVICES FOR STREETS
 AND HIGHWAYS" (IMUTCD)
 STANDARD SPECIFICATIONS FOR WATER AND SEWER MAIN CONSTRUCTION ILLINOIS JULY 2009 SIXTH EDITION,
 "DETAILS" IN THE PLANS
 LATEST EDITION OF THE MANUAL OF TEST PROCEDURE OF MATERIALS
 "SPECIAL PROVISIONS" INCLUDED IN THE CONTRACT DOCUMENTS
 AMERICANS WITH DISABILITIES ACT ACCESSIBILITY GUIDELINES
 PUBLIC RIGHTS-OF-WAY ACCESSIBILITY GUIDELINES.
 ANY REFERENCE TO STANDARDS IN THE PLANS OR SPECIAL PROVISIONS SHALL BE INTERPRETED
 TO BE LATEST STANDARDS OF THE DEPARTMENT.

UTILITIES

THE CONTRACTOR SHALL BE RESPONSIBLE FOR CONTACTING THE OWNERS OF ALL
 EXISTING FACILITIES SO THAT THE UTILITIES AND THEIR APPURTENANCES MAY BE
 LOCATED AND ADJUSTED OR MOVED, IF NECESSARY, PRIOR TO THE START OF
 CONSTRUCTION OPERATIONS. THE CONTRACTOR SHALL COOPERATE WITH ALL UTILITY
 OWNERS AS PROVIDED FOR IN THE STANDARD SPECIFICATIONS.

THE LOCATIONS OF EXISTING DRAINAGE STRUCTURES, STORM AND SANITARY SEWERS,
 WATER SERVICE LINES AND OTHER UTILITY LINES ARE APPROXIMATE, AND THE CITY
 DOES NOT GUARANTEE THEIR ACCURACY. THEIR EXACT HORIZONTAL AND VERTICAL
 LOCATIONS ARE TO BE DETERMINED IN THE FIELD BY THE CONTRACTOR AT HIS OWN
 EXPENSE.

THE CONTRACTOR SHALL BE RESPONSIBLE FOR THE PROTECTION OF ALL UNDERGROUND
 OR SURFACE UTILITIES EVEN THOUGH THEY MAY NOT BE SHOWN ON THE PLANS. ANY
 UTILITY THAT IS DAMAGED DURING CONSTRUCTION SHALL BE REPAIRED OR REPLACED TO
 THE SATISFACTION OF THE ENGINEER OR THE CITY. THIS WORK SHALL BE AT THE
 CONTRACTOR'S EXPENSE.

COORDINATION OF ALL UTILITY WORK INVOLVED IN THE CONSTRUCTION AREA WILL BE
 DISCUSSED AT THE PRECONSTRUCTION CONFERENCE.

BEFORE STARTING ANY EXCAVATION, THE CONTRACTOR SHALL CALL "JULIE" AT 800-892-
 0123 FOR FIELD LOCATIONS OF BURIED ELECTRIC, TELEPHONE, GAS AND CABLE
 TELEVISION FACILITIES. (48 HOURS NOTIFICATION IS REQUIRED.)

STAKING

THE CONTRACTOR SHALL PROTECT AND CAREFULLY PRESERVE ALL SECTION OR
 SUBSECTION MONUMENTS OR PROPERTY OR REFERENCE MARKERS UNTIL THE CITY,
 HIS AGENT OR AN AUTHORIZED SURVEYOR HAS WITNESSED OR OTHERWISE REFERENCED
 THEIR LOCATIONS.

WATER, STORM SEWER AND SANITARY SEWER

WHENEVER DURING CONSTRUCTION OPERATIONS ANY LOOSE MATERIAL IS DEPOSITED IN
 THE FLOW LINE OF DRAINAGE STRUCTURES SUCH THAT THE NATURAL FLOW OF WATER
 IS OBSTRUCTED, IT SHALL BE REMOVED AT THE CLOSE OF EACH WORKING DAY. AT THE
 CONCLUSION OF CONSTRUCTION OPERATIONS, ALL UTILITY STRUCTURES SHALL BE FREE
 FROM DIRT AND DEBRIS. THE WORK SPECIFIED ABOVE WILL NOT BE PAID FOR
 SEPARATELY BUT SHALL BE AT THE CONTRACTOR'S EXPENSE.

ANY EXISTING OR PROPOSED UTILITY DAMAGED BY THE CONTRACTOR DURING CONSTRUCTION
 SHALL BE REPLACED BY THE CONTRACTOR AT THE CONTRACTOR'S EXPENSE.

THE CONTRACTOR SHALL NOT OPEN OR SHUT ANY WATER VALVES OR FIRE HYDRANTS
 WITHOUT PRIOR AUTHORIZATION FROM THE CITY WATER DEPARTMENT.
 UNAUTHORIZED USE SHALL SUBJECT THE OFFENDER TO ARREST AND PROSECUTION.

MISCELLANEOUS

ACCESS: THE CONTRACTOR SHALL PROVIDE ACCESS TO ABUTTING PROPERTY AT ALL
 TIMES DURING THE CONSTRUCTION OF THIS PROJECT, EXCEPT FOR PERIODS OF SHORT
 DURATION. THE COST TO PROVIDE ACCESS SHALL BE PAID FOR AND INCLUDED IN THE
 ITEM TEMPORARY ACCESS (COMMERCIAL ENTRANCE).

DIMENSIONS: IT SHALL BE THE CONTRACTOR'S RESPONSIBILITY TO VERIFY ALL
 DIMENSIONS AND CONDITIONS EXISTING IN THE FIELD PRIOR TO ORDERING MATERIALS
 AND BEGINNING CONSTRUCTION.

ALL SAWCUTTING SHALL BE INCLUDED IN THE COST OF THE ASSOCIATED REMOVAL ITEMS AND
 SHALL BE PERFORMED PRIOR TO BEGINNING REMOVAL. ANY ITEMS OF WORK REMOVED PRIOR TO
 SAWCUTTING WILL NOT BE MEASURED FOR PAYMENT.

ANY EXISTING PAVEMENT DAMAGED BY THE CONTRACTOR DURING THE CONSTRUCTION SHALL BE
 REPLACED/REPAIRED BY THE CONTRACTOR AT HIS/HERS OWN EXPENSE TO THE SATISFACTION
 OF THE ENGINEER WITH NO ADDITIONAL COMPENSATION TO THE CONTRACTOR.

CURB RAMPS FOR HMA BIKE PATH SHALL BE PAID FOR AS THE WORK ITEMS ASSOCIATED WITH THE
 BIKE PATH CONSTRUCTION. A SEPARATE PAY ITEM FOR CURB RAMPS WILL NOT BE PROVIDED.

REMOVAL AND DISPOSAL OF EXCAVATED TOPSOIL SHALL BE PAID FOR AS EARTH EXCAVATION.

THE THICKNESSES OF HMA MIXTURES SHOWN IN THE PLANS ARE NOMINAL.
 DEVIATIONS MAY OCCUR DUE TO IRREGULARITIES IN THE SURFACES OR BASIS ON WHICH
 THEY ARE TO BE PLACED. PLAN THICKNESSES SHOULD BE CONSIDERED THE MINIMUM
 THICKNESS PERMITTED.

DETECTABLE WARNINGS FOR THE HANDICAPPED SHALL BE INSTALLED AT ALL
 INTERSECTING STREETS, DRIVEWAYS, AND ALLEYS AS DIRECTED BY THE ENGINEER.

PAVEMENT GRADES: THE ELEVATIONS INDICATED ON THE PLANS ARE FINISHED GRADES
 OF PROPOSED PAVEMENT OR SURFACE COURSE, UNLESS OTHERWISE INDICATED.

RELOCATING EXISTING SIGNS: EXISTING SIGNS WHICH ARE IN CONFLICT WITH PROPOSED
 IMPROVEMENTS SHALL BE REMOVED AND REINSTALLED UPON COMPLETION OF
 CONFLICTING IMPROVEMENTS IN ACCORDANCE WITH THE ILLINOIS DEPARTMENT OF
 TRANSPORTATION "MANUAL OF UNIFORM TRAFFIC CONTROL DEVICES" AND THE "STANDARD
 SPECIFICATIONS FOR ROAD AND BRIDGE CONSTRUCTION". STOP SIGNS, SPEED LIMIT
 SIGNS, AND STREET NAME SIGNS SHALL BE UP AND VISIBLE AT ALL TIMES. THIS WORK
 SHALL BE INCLUDED IN THE PAY ITEMS ASSOCIATED WITH THE BIKE PATH CONSTRUCTION.

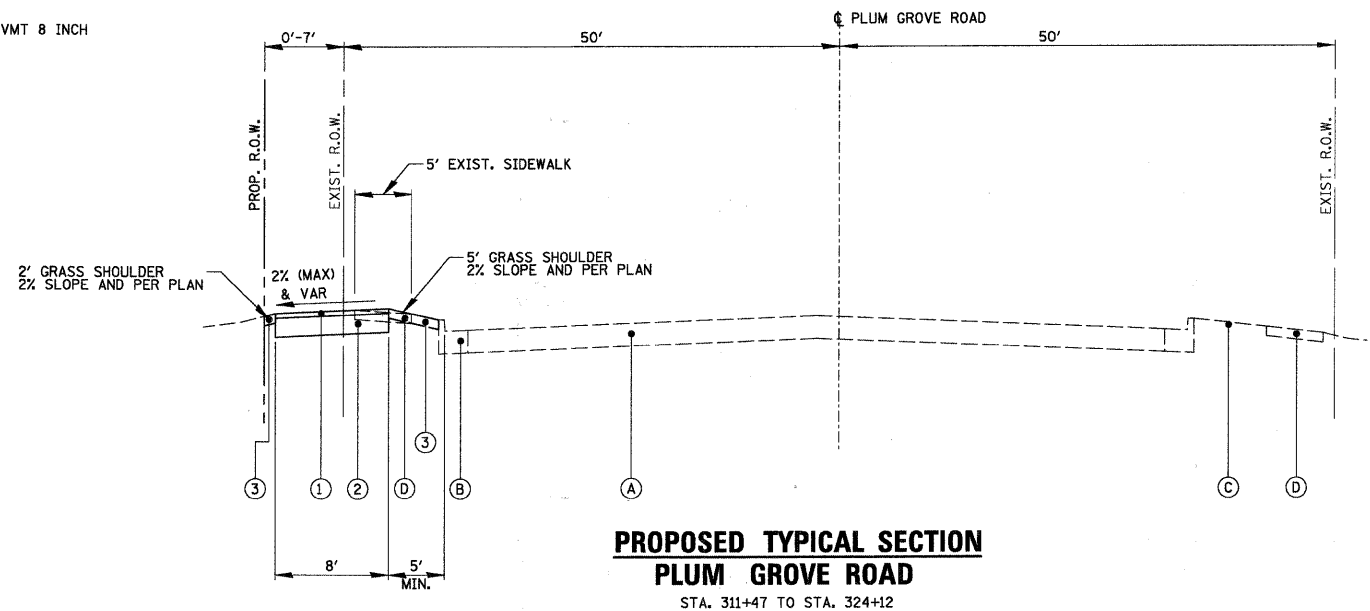
MAILBOXES WHICH ARE IN CONFLICT WITH PROPOSED IMPROVEMENTS SHALL BE
 REMOVED, TEMPORARILY RELOCATED, AND REPLACED UPON COMPLETION OF THE
 PROPOSED IMPROVEMENTS AS DIRECTED BY THE ENGINEER. THIS WORK SHALL BE CONSIDERED
 INCLUDED IN THE PAY ITEMS ASSOCIATED WITH THE BIKE PATH CONSTRUCTION.

ALL UNDERGROUND, DRIVEWAY, CONCRETE, AND LANDSCAPE WORK IS TO BE COMPLETED
 BEFORE THE SURFACE COURSE CAN BE INSTALLED.

ANY DRIVEWAY PAVEMENT REMOVED SHALL BE REPLACED WITH PCC DRIVE PVMT 8 INCH
 ON AGG BASE COURSE TB 3" ON COMPACTED SUBGRADE.

LIST OF STATE STANDARDS

STANDARD NO.	DESCRIPTION
STD. 000001-06	STANDARD SYMBOLS, ABBREVIATIONS AND PATTERNS
STD. 280001-06	TEMPORARY EROSION CONTROL SYSTEMS
STD. 424001-05	CURB RAMPS FOR SIDEWALKS
STD. 701501-06	URBAN LANE CLOSURE, 2L, 2W, UNDIVIDED
STD. 701701-07	URBAN LANE CLOSURE, MULTILANE INTERSECTION
STD. 701801-04	LANE CLOSURE MULTI LANE 1 WAY OR 2 WAY CROSSWALK OR SIDEWALK CLOSURE
STD. 701901-01	TRAFFIC CONTROL DEVICES
TC 10	TRAFFIC CONTROL AND PROTECTION FOR SIDE ROADS, INTERSECTIONS AND DRIVEWAYS
TC 13	DISTRICT ONE TYPICAL PAVEMENT MARKINGS



**PROPOSED TYPICAL SECTION
 PLUM GROVE ROAD**
 STA. 311+47 TO STA. 324+12

LEGEND:

EXISTING	PROPOSED
(A) PCC PVMT ROADWAY	(1) HOT-MIX ASPHALT SURFACE COURSE, MIX C, N50, 2" IL-9.5 mm)
(B) TYPE B-6.24 CURB AND GUTTER	(2) AGGREGATE BASE COURSE, TYPE B, 8"
(C) GRASS PARKWAY	(3) TOPSOIL FURNISH AND PLACE, 4" AND SODDING, SALT TOLERANT
(D) CONCRETE SIDEWALK	

HOT-MIX ASPHALT REQUIREMENTS	
ITEM	AIR VOIDS
HOT-MIX ASPHALT SURFACE COURSE, MIX C, N50, 2" IL-9.5 mm)	4% @ 50 GYR

THE UNIT WEIGHT USED TO CALCULATE ALL HOT-MIX ASPHALT MIXTURE QUANTITIES IS 112 LBS/SQ YD/IN

"AC TYPE" FOR POLYMERIZED HMA MIXES SHALL BE "SBS/SBR PG 70-22", AND FOR NON-POLYMERIZED HMA MIXES THE "AC TYPE" SHALL BE "PG 64-22" UNLESS MODIFIED BY DISTRICT ONE SPECIAL PROVISIONS.

FOR "PERCENT OF RAP" SEE DISTRICT ONE SPECIAL PROVISIONS.

SUMMARY OF QUANTITIES

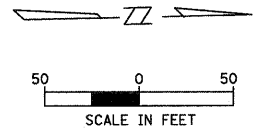
IDOT PAY ITEM	DESCRIPTION	UNIT	QUANTITY
20100110	TREE REMOVAL (6 TO 15 UNITS DIAMETER)	UNIT	44
20200100	EARTH EXCAVATION	CU YD	260
20201200	REMOVAL AND DISPOSAL OF UNSUITABLE MATERIAL	CU YD	50
21101615	TOPSOIL FURNISH AND PLACE, 4"	SQ YD	553
25000400	NITROGEN FERTILIZER NUTRIENT	POUND	7
25000500	PHOSPHORUS FERTILIZER NUTRIENT	POUND	7
25000600	POTASSIUM FERTILIZER NUTRIENT	POUND	7
25200110	SODDING, SALT TOLERANT	SQ YD	553
25200200	SUPPLEMENTAL WATERING	UNIT	10
28000400	PERIMETER EROSION BARRIER	FOOT	955
28000510	INLET FILTERS	EACH	15
35101598	AGGREGATE BASE COURSE, TYPE B 3"	SQ YD	21
35102000	AGGREGATE BASE COURSE, TYPE B 8"	SQ YD	873
40600100	BITUMINOUS MATERIALS (PRIME COAT)	GALLON	437
40603310	HOT-MIX ASPHALT SURFACE COURSE, MIX "C", N50	TON	98
42300400	PORTLAND CEMENT CONCRETE DRIVEWAY PAVEMENT, 8 INCH	SQ YD	21
42400200	PORTLAND CEMENT CONCRETE SIDEWALK 5 INCH	SQ FT	160
42400800	DETECTABLE WARNINGS	SQ FT	96
44000200	DRIVEWAY PAVEMENT REMOVAL	SQ YD	21
44000500	COMBINATION CURB AND GUTTER REMOVAL	FOOT	185
44000600	SIDEWALK REMOVAL	SQ FT	534
*56400400	FIRE HYDRANT TO BE RELOCATED	EACH	1
60603800	COMBINATION CONCRETE CURB AND GUTTER, TYPE B-6.12	FOOT	193
67100100	MOBILIZATION	L SUM	1
70102620	TRAFFIC CONTROL AND PROTECTION, STANDARD 701501	L SUM	1
70102635	TRAFFIC CONTROL AND PROTECTION, STANDARD 701701	L SUM	1
70102640	TRAFFIC CONTROL AND PROTECTION, STANDARD 701801	L SUM	1
X0326862	STRUCTURES TO BE ADJUSTED	EACH	7
X4022000	TEMPORARY ACCESS (COMMERCIAL ENTRANCE)	EACH	8
*X8140115	HANDHOLE TO BE ADJUSTED	EACH	2
XX008404	RECORD DRAWINGS	L SUM	1
Z0013798	CONSTRUCTION LAYOUT	L SUM	1
Z0042002	POROUS GRANULAR EMBANKMENT, SUBGRADE	CU YD	50
Z0013302	SEGMENTAL CONCRETE BLOCK WALL	SQ FT	113

* INDICATES SPECIALTY ITEM

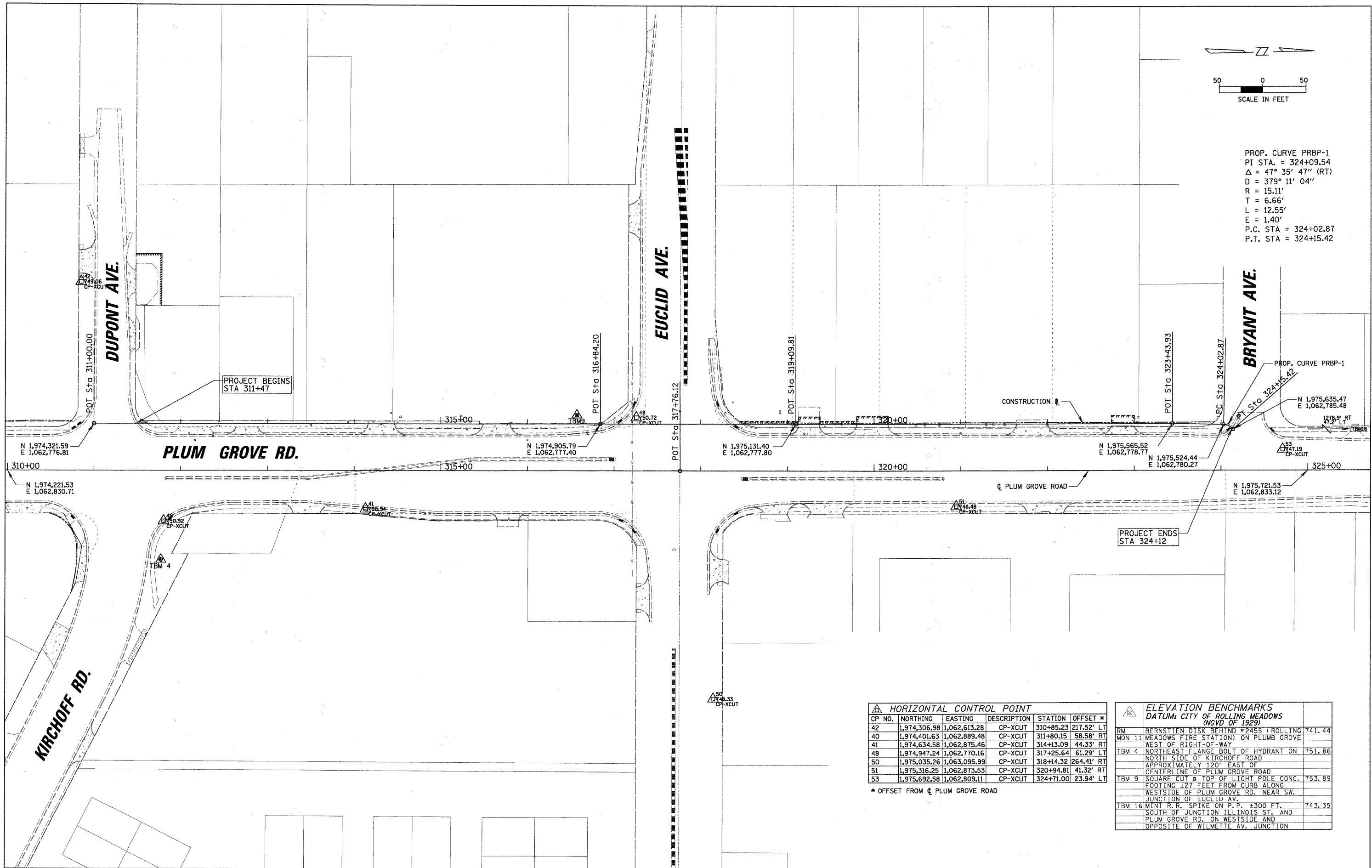
EARTHWORK SUMMARY TABLE

Earthwork Summary Table				
Station	Earth Ex	Fill	Topsoil Strip*	Topsoil Place
	CY	CY	CY	CY
312+00.				
312+23.77	0.0	0.0	0.0	0.0
312+50.	4.0	0.0	1.7	0.2
312+76.32	4.0	0.0	1.8	0.2
313+00.	3.5	0.0	1.6	0.0
313+50.	11.8	0.3	6.7	1.1
314+00.	8.7	0.8	6.7	2.2
314+31.38	5.9	0.6	2.1	0.7
314+50.	3.9	0.1	1.2	0.4
315+00.	11.1	0.1	6.7	2.2
315+50.	5.9	0.1	3.3	1.1
316+00.	5.3	0.1	2.4	0.8
316+50.	10.2	0.3	4.4	1.3
317+00.	4.9	0.2	2.0	0.5
318+50.				
318+81.89	10.3	0.0	3.3	0.6
319+00.	6.0	0.0	2.2	0.6
319+24.58	4.1	0.0	1.5	0.4
319+50.	2.8	0.0	1.6	0.4
320+00.	5.5	0.1	3.1	0.8
320+50.	5.0	0.1	2.7	1.2
321+00.	9.7	0.3	5.4	2.4
321+50.	9.4	0.3	5.4	2.3
321+84.9	3.3	0.1	1.9	0.8
322+00.	0.0	0.0	0.0	0.0
322+50.	4.7	2.7	2.7	1.2
322+86.84	3.5	2.0	2.0	0.9
323+50.	6.3	3.5	3.5	1.6
323+99.78	9.8	4.8	4.8	1.9
324+00.	0.0	0.0	0.0	0.0
Totals	160.0*	16.0	81.0*	26.0

* PAID FOR AS EARTH EXCAVATION



PROP. CURVE PRBP-1
 PI STA. = 324+09.54
 $\Delta = 47^\circ 35' 47''$ (RT)
 D = 379° 11' 04"
 R = 15.11'
 T = 6.66'
 L = 12.55'
 E = 1.40'
 P.C. STA = 324+02.87
 P.T. STA = 324+15.42



HORIZONTAL CONTROL POINT						
CP NO.	NORTHING	EASTING	DESCRIPTION	STATION	OFFSET *	
42	1,974,306.98	1,062,613.28	CP-XCUT	310+85.23	217.52' LT	
40	1,974,401.63	1,062,889.48	CP-XCUT	311+80.15	58.58' RT	
41	1,974,634.58	1,062,875.46	CP-XCUT	314+13.09	44.33' RT	
48	1,974,947.24	1,062,770.16	CP-XCUT	317+25.64	61.29' LT	
50	1,975,035.26	1,063,095.99	CP-XCUT	318+14.32	264.41' RT	
51	1,975,316.25	1,062,873.53	CP-XCUT	320+94.81	41.32' RT	
53	1,975,692.58	1,062,809.11	CP-XCUT	324+71.00	23.94' LT	

* OFFSET FROM ϕ PLUM GROVE ROAD

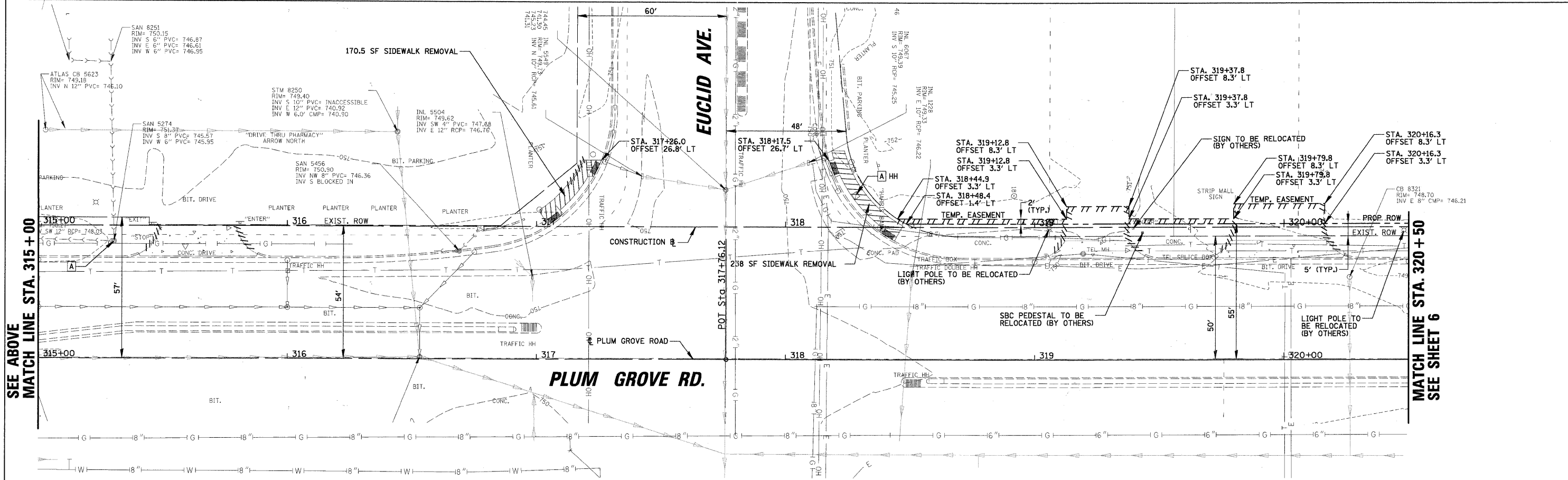
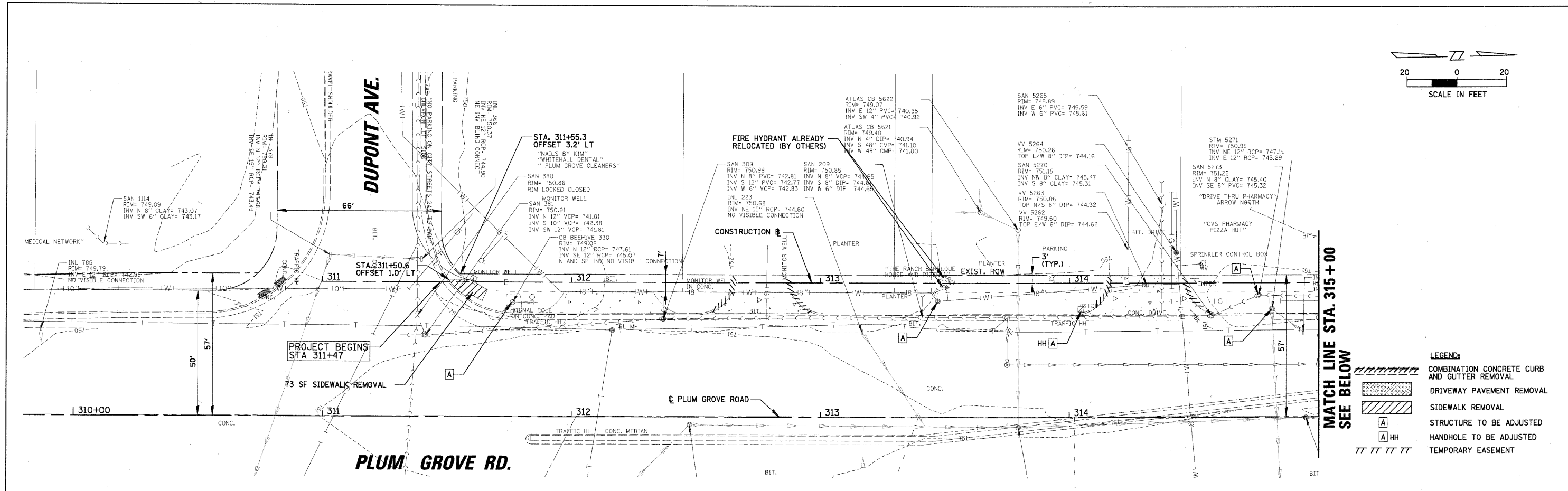
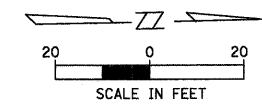
ELEVATION BENCHMARKS			
DATUM: CITY OF ROLLING MEADOWS (MVD OF 1929)			
RM	BERNSTEIN DISK BEHIND #2455 (ROLLING MEADOWS FIRE STATION) ON PLUMB GROVE WEST OF RIGHT-OF-WAY	741.44	
TBM 4	NORTHEAST FLANGE BOLT OF HYDRANT ON NORTH SIDE OF KIRCHOFF ROAD APPROXIMATELY 120' EAST OF CENTERLINE OF PLUM GROVE ROAD	751.86	
TBM 9	SQUARE CUT ϕ TOP OF LIGHT POLE CONC. FOOTING \pm 27 FEET FROM CURB ALONG WESTSIDE OF PLUM GROVE RD. NEAR SW. JUNCTION OF EUCLID AV.	753.89	
TBM 16	MINT R.R. SPIKE ON P.P. \pm 300 FT. SOUTH OF JUNCTION ILLINOIS ST. AND PLUM GROVE RD. ON WESTSIDE AND OPPOSITE OF WILMETTE AV. JUNCTION	743.35	

FILE NAME =	USER NAME = ESIDORCZ	DESIGNED - BMW	REVISED -
N:\ROLLINGMEADOWS\98361BR96A\Civil\BML98361BR96A_01.SHT		DRAWN - MYG	REVISED -
PLOT SCALE = 1" = 50'		CHECKED - JGS	REVISED -
PLOT DATE = 7/14/2011		DATE - 7/14/2011	REVISED -

**STATE OF ILLINOIS
 DEPARTMENT OF TRANSPORTATION**

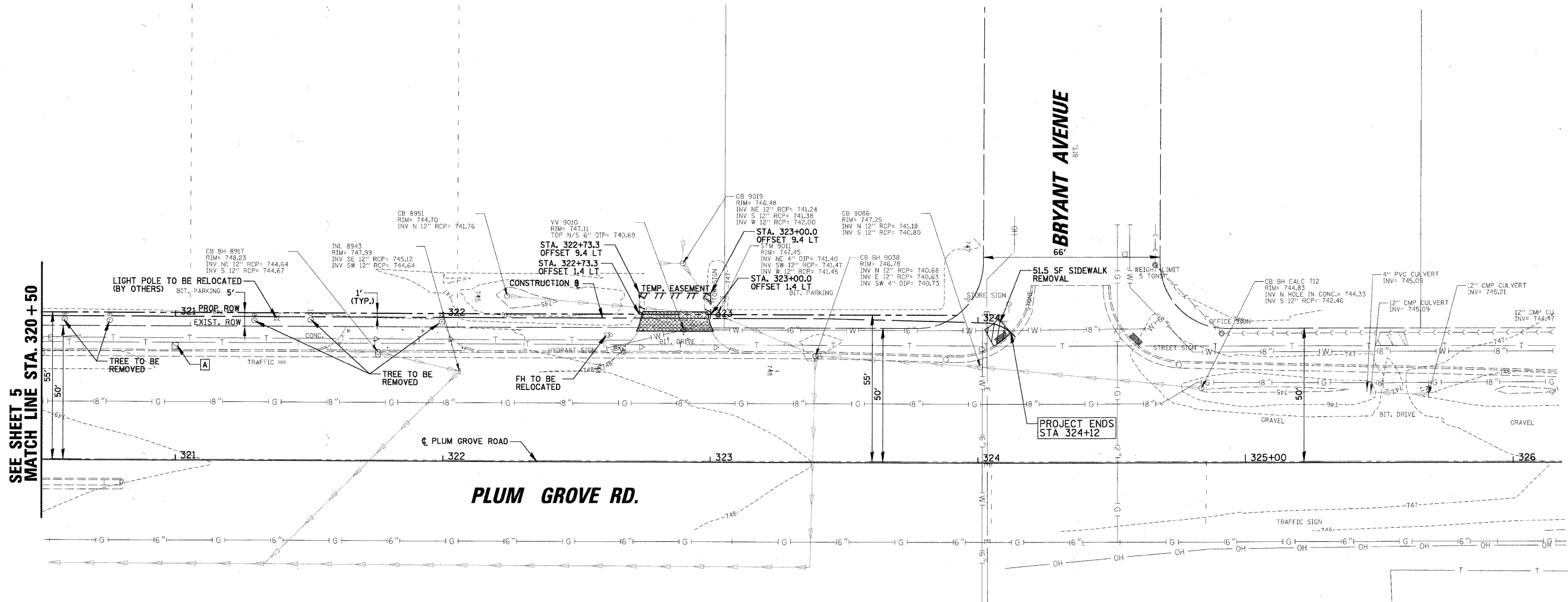
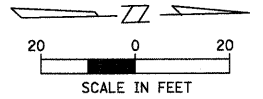
PLUM GROVE ROAD BIKE PATH ALIGNMENT, TIES AND BENCHMARKS			
SCALE:	SHEET NO.	OF SHEETS	STA. TO STA.

F.A. RTE.	SECTION	COUNTY	TOTAL SHEETS	SHEET NO.
	07-00094-00-BT	COOK	18	4
CONTRACT NO. 63356				
ILLINOIS FED. AID PROJECT				



- LEGEND:**
- COMBINATION CONCRETE CURB AND GUTTER REMOVAL
 - DRIVEWAY PAVEMENT REMOVAL
 - SIDEWALK REMOVAL
 - STRUCTURE TO BE ADJUSTED
 - HANDHOLE TO BE ADJUSTED
 - TEMPORARY EASEMENT

FILE NAME =	USER NAME = ESIDORCZ	DESIGNED - BMW	REVISED -	STATE OF ILLINOIS DEPARTMENT OF TRANSPORTATION	PLUM GROVE ROAD BIKE PATH EXISTING CONDITIONS AND REMOVAL PLAN STA. 311+00 TO STA. 320+50			F.A. RTE.	SECTION	COUNTY	TOTAL SHEETS	SHEET NO.
N:\ROLLINGMEADOWS\98361BR96A\Civil\REM_8361BR96A_01.SHT		DRAWN - MYG	REVISED -		07-00094-00-BT	COOK	18	5				
PLOT SCALE = 28"		CHECKED - JGS	REVISED -		CONTRACT NO. 63356							
PLOT DATE = 7/14/2011		DATE = 7/14/2011	REVISED -		ILLINOIS FED. AID PROJECT							



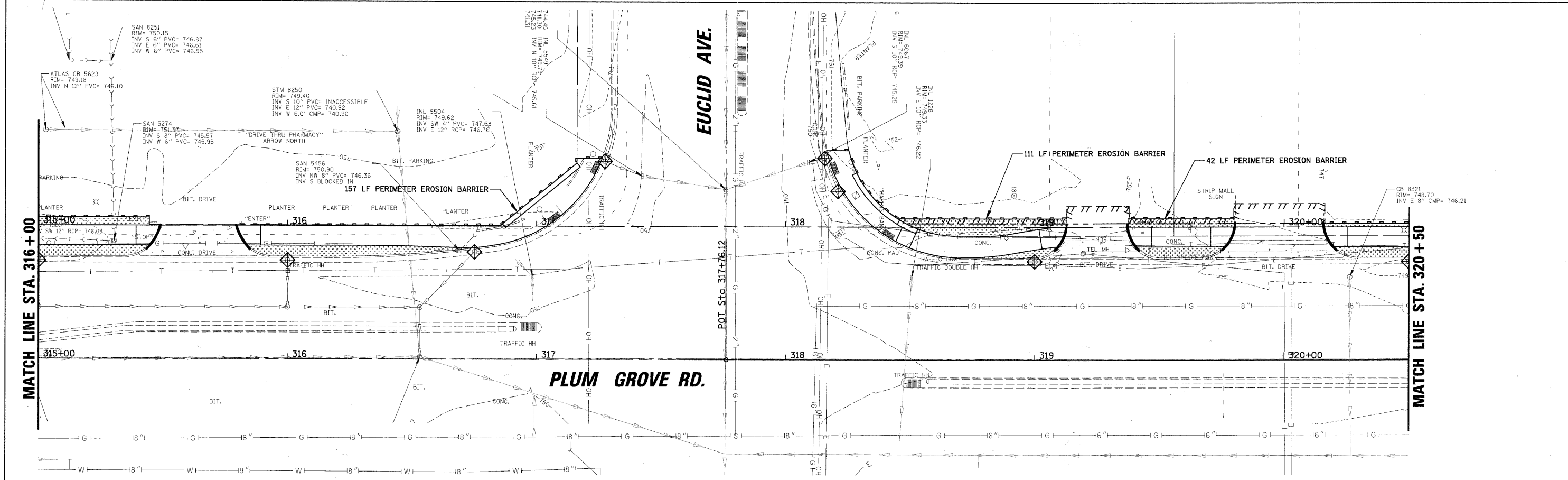
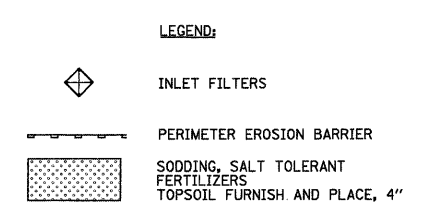
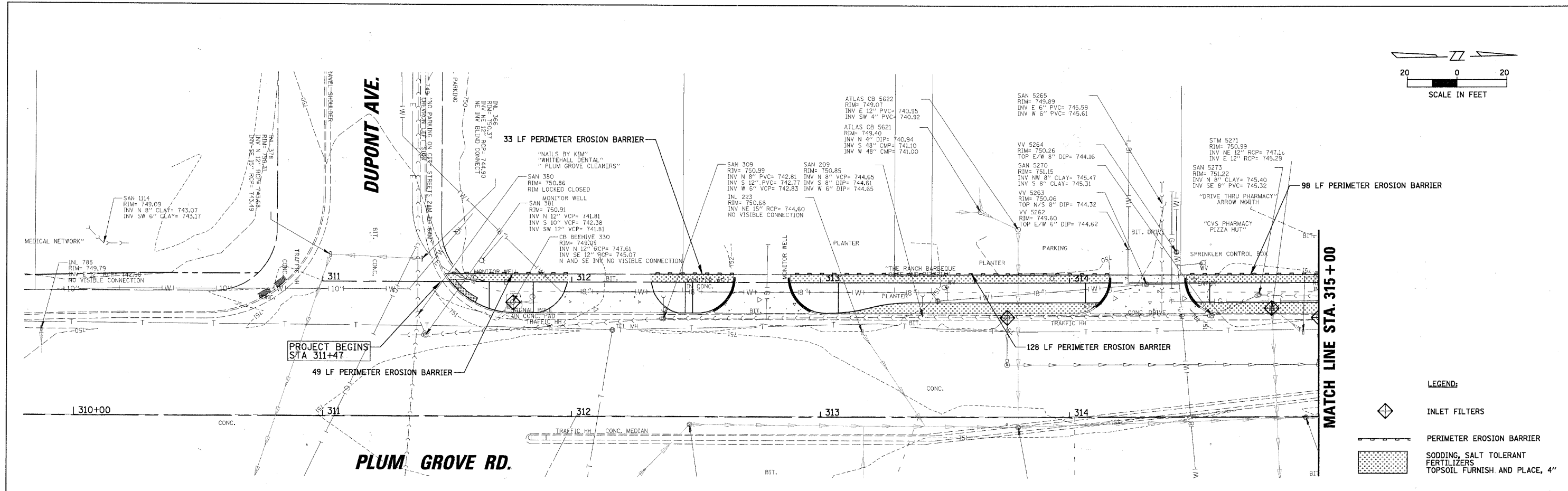
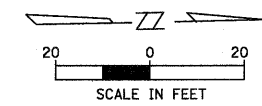
SEE SHEET 5
MATCH LINE STA. 320 + 50

PROJECT ENDS
STA 324+12

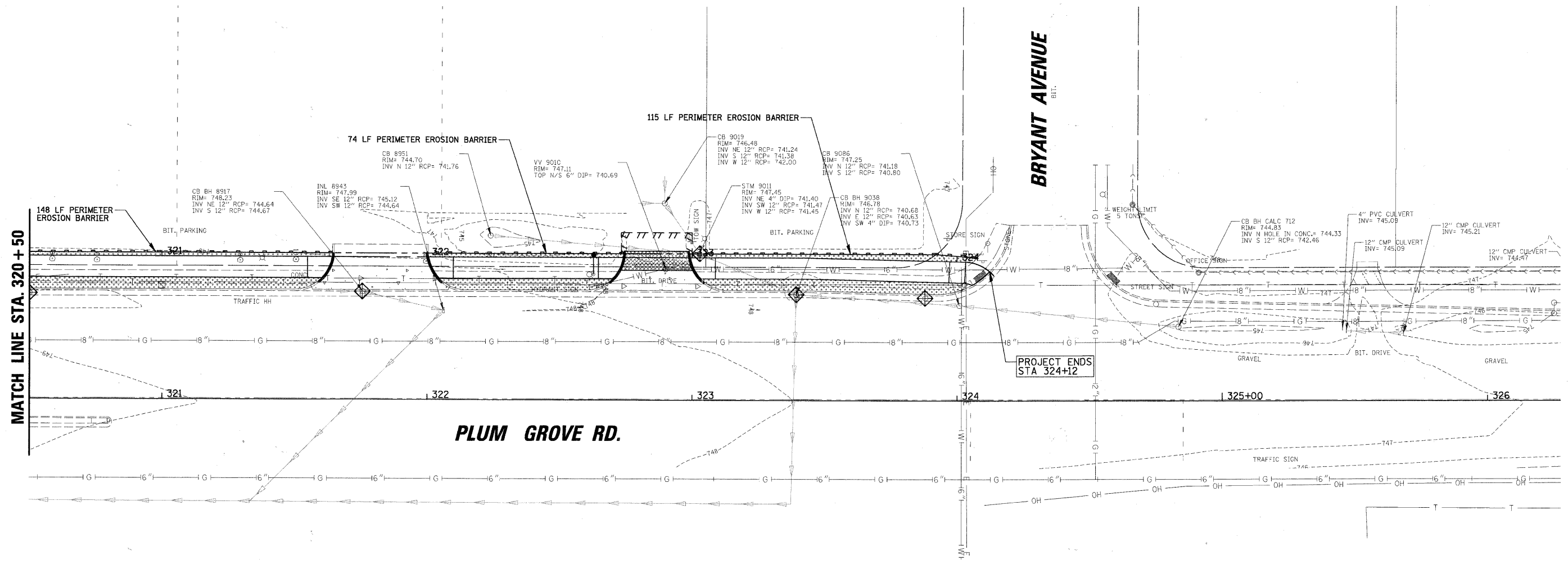
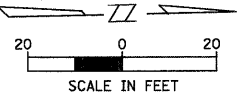
LEGEND:

	COMBINATION CONCRETE CURB AND GUTTER REMOVAL
	DRIVEWAY PAVEMENT REMOVAL
	SIDEWALK REMOVAL
	STRUCTURE TO BE ADJUSTED
	HANDHOLE TO BE ADJUSTED
	TEMPORARY EASEMENT




FILE NAME = N:\ROLLINGMEADOWS\98361BR96A\CIVIL\REM.	USER NAME = ESIDORCZ	DESIGNED - BMW	REVISED -	STATE OF ILLINOIS DEPARTMENT OF TRANSPORTATION	PLUM GROVE ROAD BIKE PATH EXISTING CONDITIONS AND REMOVAL PLAN STA. 320 + 50 TO STA. 324 + 12	F.A. RTE.	SECTION	COUNTY	TOTAL SHEETS	SHEET NO.
	PLOT SCALE = 20'	DATE = 7/14/2011	DRAWN - MYG			CHECKED - JGS	REVISED -	07-00094-00-BT	COOK	18
						SCALE:	SHEET NO. OF SHEETS		STA.	TO STA.
						ILLINOIS FED. AID PROJECT				



FILE NAME = N:\ROLLINGMeadows\98361BR96A\Civil\SESC	USER NAME = ESIDORCZ	DESIGNED - BMW	REVISED -	STATE OF ILLINOIS DEPARTMENT OF TRANSPORTATION	PLUM GROVE ROAD BIKE PATH SOIL EROSION AND SEDIMENTATION CONTROL STA. 311+00 TO STA. 320+50			F.A. RTE.	SECTION	COUNTY	TOTAL SHEETS	SHEET NO.
	98361BR96A_01.SHT	DRAWN - MYG	REVISED -		SCALE:	SHEET NO.	OF SHEETS	STA.	TO STA.	COOK	18	10
	PLOT SCALE = 20'	CHECKED - JCS	REVISED -							CONTRACT NO. 63356		
	PLOT DATE = 7/14/2011	DATE - 7/14/2011	REVISED -							ILLINOIS FED. AID PROJECT		



LEGEND:

-  INLET FILTERS
-  PERIMETER EROSION BARRIER
-  SODDING, SALT TOLERANT FERTILIZERS TOPSOIL FURNISH AND PLACE, 4"

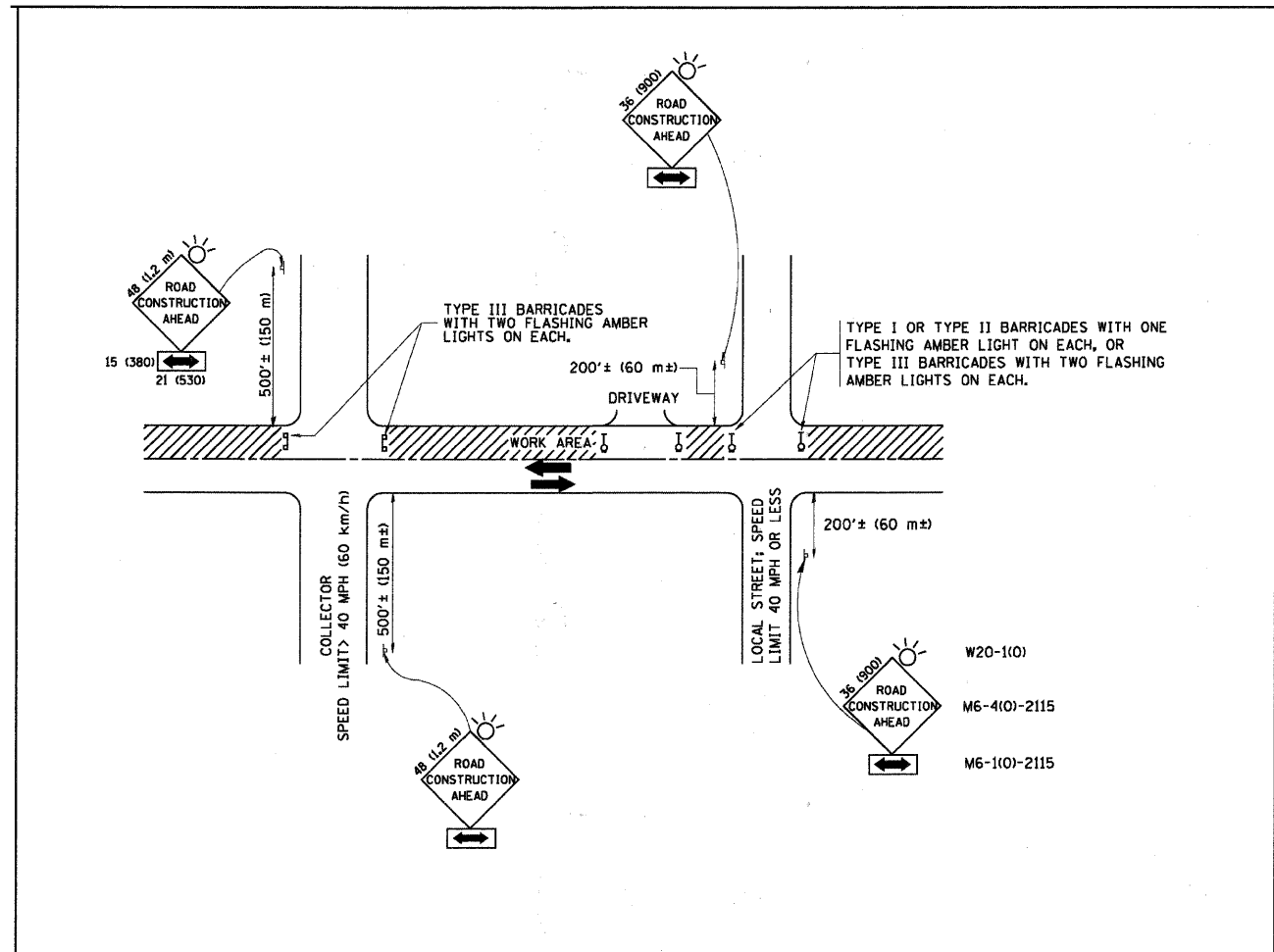
FILE NAME =	USER NAME = ESIDORCZ	DESIGNED - BMW	REVISED -
N:\ROLLINGMEADOWS\98361BR96A\Civil\SESC	98361BR96A_02.SHT	DRAWN - MYG	REVISED -
	PLOT SCALE = 20'	CHECKED - JGS	REVISED -
	PLOT DATE = 7/14/2011	DATE - 7/14/2011	REVISED -

**STATE OF ILLINOIS
DEPARTMENT OF TRANSPORTATION**

**PLUM GROVE ROAD BIKE PATH
SOIL EROSION AND SEDIMENTATION CONTROL
STA. 320 + 50 TO STA. 324 + 12**

SCALE: SHEET NO. OF SHEETS STA. TO STA.

F.A. RTE.	SECTION	COUNTY	TOTAL SHEETS	SHEET NO.
	07-00094-00-BT	COOK	18	11
CONTRACT NO. 63356				
ILLINOIS FED. AID PROJECT				



TRAFFIC CONTROL AND PROTECTION FOR SIDE ROADS, INTERSECTIONS, AND DRIVEWAYS

NOTES:

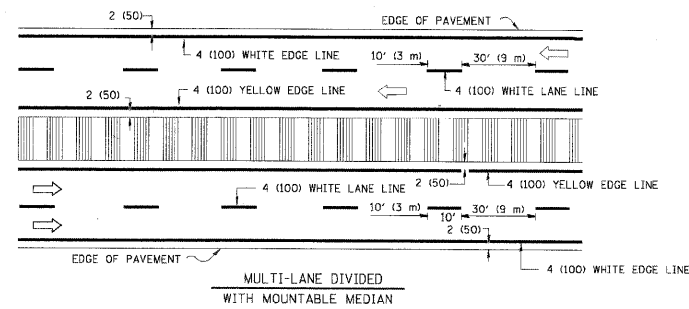
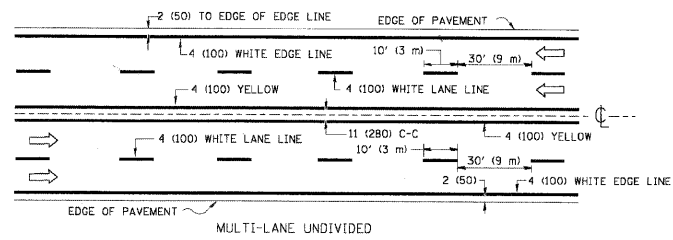
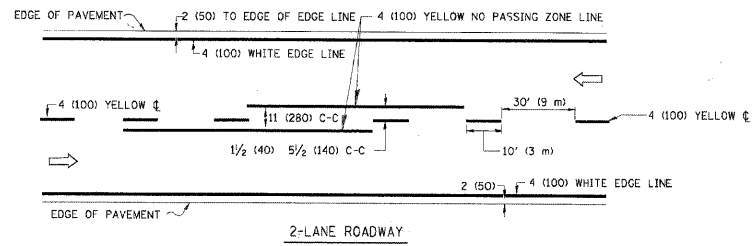
- A. FOR NO LANE RESTRICTION ON THE SIDE ROAD OR DRIVEWAYS**
 1. SIDE ROAD WITH A SPEED LIMIT OF 40 MPH (60 km/h) OR LESS AS SHOWN ON THE DRAWING AND AS DIRECTED BY THE ENGINEER:
 - a) ONE ROAD CONSTRUCTION AHEAD SIGN 36 x 36 (900x900) WITH A FLASHER AND FLAG MOUNTED ON IT APPROXIMATELY 200' (60 m) IN ADVANCE OF THE MAIN ROUTE.
 - b) THE CLOSED PORTION OF THE MAIN ROUTE SHALL BE PROTECTED BY BLOCKING WITH TYPE I, TYPE II OR TYPE III BARRICADES, 1/3 OF THE CROSS SECTION OF THE CLOSED PORTION.
 2. SIDE ROAD WITH A SPEED LIMIT GREATER THAN 40 MPH (60 km/h) AS SHOWN ON THE DRAWING AND AS DIRECTED BY THE ENGINEER:
 - a) ONE ROAD CONSTRUCTION AHEAD SIGN 48 x 48 (1.2 m x 1.2 m) WITH A FLASHER MOUNTED ON IT APPROXIMATELY 500' (150 m) IN ADVANCE OF THE MAIN ROUTE.
 - b) THE CLOSED PORTION OF THE MAIN ROUTE SHALL BE PROTECTED BY BLOCKING WITH TYPE III BARRICADES, 1/2 OF THE CROSS SECTION OF THE CLOSED PORTION.
 3. WHEN THE SIDE ROAD LIES BETWEEN THE BEGINNING OF THE MAINLINE SIGNING AND THE WORK ZONE, A SINGLE HEADED ARROW (M6-1) SHALL BE USED IN LIEU OF THE DOUBLE HEADED ARROW (M6-4).
- B. FOR A LANE CLOSURE ON A SIDE ROAD OR DRIVEWAY:**

USE APPLICABLE PORTIONS OF THE TYPICAL APPLICATION OF TRAFFIC CONTROL DEVICES (STD. 701501, STD. 701606 OR THE APPROPRIATE STANDARD). THE SPACING OF SIGNS AND BARRICADES SHALL BE ADJUSTED FOR FIELD CONDITIONS AS DIRECTED BY THE ENGINEER. THE DIRECTIONAL ARROW SHALL BE COVERED OR REMOVED WHEN NO LONGER CONSISTENT WITH THE SIDE ROAD LANE CLOSURE.

 - C. ADVANCE WARNING SIGNS ARE TO BE OMITTED ON DRIVEWAY UNLESS OTHERWISE NOTED.
 - D. THE TRAFFIC CONTROL AND PROTECTION FOR SIDE ROADS, INTERSECTIONS, AND DRIVEWAYS SHALL BE INCIDENTAL TO THE COST OF SPECIFIED TRAFFIC CONTROL STANDARDS OR ITEMS.

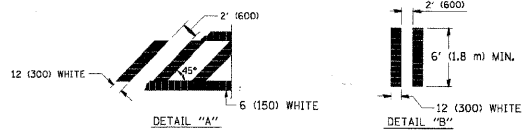
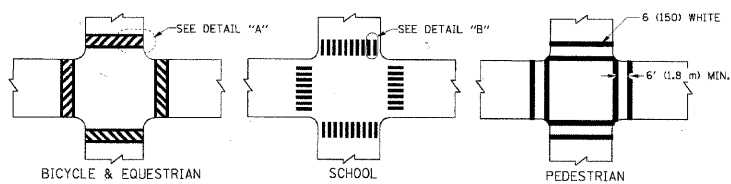
All dimensions are in millimeters (inches) unless otherwise shown.

FILE NAME =	USER NAME = ESIDORCZ	DESIGNED - BMW	REVISED -	STATE OF ILLINOIS DEPARTMENT OF TRANSPORTATION	PLUM GROVE ROAD BIKE PATH TRAFFIC CONTROL AND PROTECTION FOR SIDE ROADS, INTERSECTIONS AND DRIVEWAYS				F.A. RTE.	SECTION	COUNTY	TOTAL SHEETS	SHEET NO.
N:\ROLLINGMEADOWS\98361BR96A\Civil\PMK_98361BR96A.SHT		DRAWN - MYG	REVISED -		SCALE:	SHEET NO.	OF SHEETS	STA.	TO STA.	07-00094-00-BT	COOK	18	12
	PLOT SCALE = 1"	CHECKED - JGS	REVISED -							TC-10		CONTRACT NO. 63356	
	PLOT DATE = 7/14/2011	DATE - 7/14/2011	REVISED -							ILLINOIS FED. AID PROJECT			

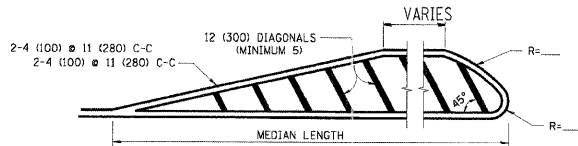
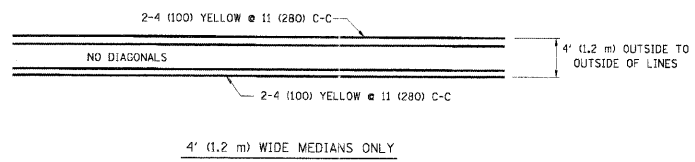


NOTE: MEDIANS WITH BARRIER CURB DO NOT REQUIRE AN EDGE LINE

TYPICAL LANE AND EDGE LINE MARKING

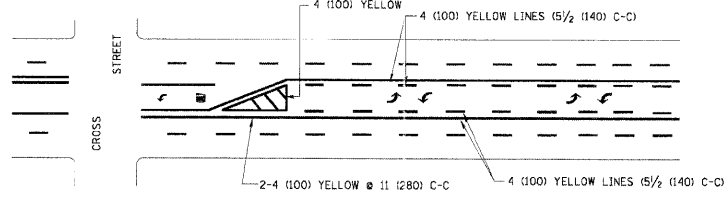


TYPICAL CROSSWALK MARKING

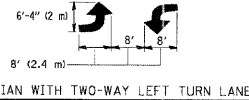


FOR MEDIAN LENGTHS WHERE DIAGONAL SPACING CANNOT BE ATTAINED, USE 5 (FIVE) EQUALLY SPACED DIAGONAL LINES.
 DIAGONAL LINE SPACING: 50' (15 m) C-C (LESS THAN 30MPH (50 km/h))
 75' (25 m) C-C 30MPH (50 km/h) TO 45MPH (70 km/h)
 150' (45 m) C-C (MORE THAN 45MPH (70 km/h))

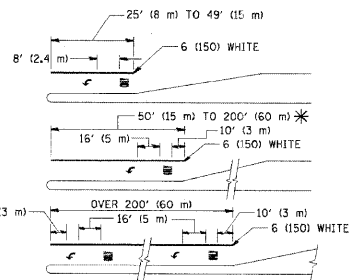
MEDIANS OVER 4' (1.2 m) WIDE



A MINIMUM OF TWO PAIRS OF TURN ARROWS SHALL BE USED, WHITE IN COLOR. ADDITIONAL PAIRS SHALL BE PLACED AT 200' (60 m) TO 300' (90 m) INTERVALS.



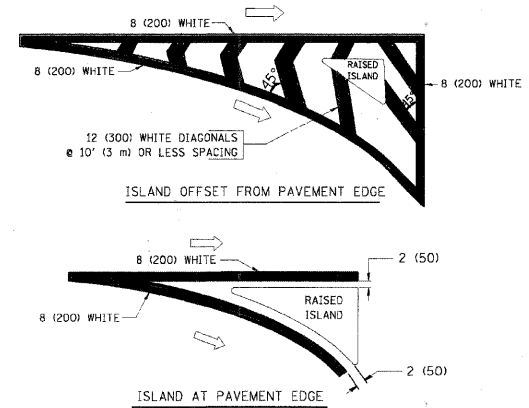
TYPICAL PAINTED MEDIAN MARKING



FULL SIZE LETTERS 8' (2.4 m) AND ARROWS SHALL BE USED.
 AREA = 15.6 SQ. FT. (1.5 m²) AREA = 20.8 SQ. FT. (1.9 m²)
 * TURN LANES IN EXCESS OF 400' (120 m) IN LENGTH MAY HAVE AN ADDITIONAL SET OF ARROW - "ONLY" INSTALLED MIDWAY BETWEEN THE OTHER TWO SETS OF ARROW - "ONLY".

TYPICAL LEFT (OR RIGHT) TURN LANE

TYPICAL TURN LANE MARKING



TYPICAL ISLAND MARKING

TYPE OF MARKING	WIDTH OF LINE	PATTERN	COLOR	SPACING / REMARKS
CENTERLINE ON 2 LANE PAVEMENT	4 (100)	SKIP-DASH	YELLOW	10' (3 m) LINE WITH 30' (9 m) SPACE
CENTERLINE ON MULTI-LANE UNDIVIDED PAVEMENT	2 @ 4 (100)	SOLID	YELLOW	11 (280) C-C
NO PASSING ZONE LINES FOR ONE DIRECTION FOR BOTH DIRECTIONS	4 (100) 2 @ 4 (100)	SOLID SOLID	YELLOW YELLOW	5/2 (140) C-C FROM SKIP-DASH CENTERLINE 11 (280) C-C OMIT SKIP-DASH CENTERLINE BETWEEN
LANE LINES	4 (100) 5 (125) ON FREEWAYS	SKIP-DASH SKIP-DASH	WHITE WHITE	10' (3 m) LINE WITH 30' (9 m) SPACE
DOTTED LINES (EXTENSIONS OF CENTER, LANE OR TURN LANE MARKINGS)	SAME AS LINE BEING EXTENDED	SKIP-DASH	SAME AS LINE BEING EXTENDED	2' (600) LINE WITH 6' (1.8 m) SPACE
EDGE LINES	4 (100)	SOLID	YELLOW-LEFT WHITE-RIGHT	OUTLINE MOUNTABLE MEDIANS IN YELLOW, EDGE LINES ARE NOT USED NEXT TO BARRIER CURB
TURN LANE MARKINGS	6 (150) LINE, FULL SIZE LETTERS & SYMBOLS (8' (2.4m))	SOLID	WHITE	SEE TYPICAL TURN LANE MARKING DETAIL
TWO WAY LEFT TURN MARKING	2 @ 4 (100) EACH DIRECTION 8' (2.4m) LEFT ARROW	SKIP-DASH AND SOLID IN PAIRS	YELLOW WHITE	10' (3 m) LINE WITH 30' (9 m) SPACE FOR SKIP-DASH 5/2 (140) C-C BETWEEN SOLID LINE AND SKIP-DASH LINE SEE TYPICAL TWO-WAY LEFT TURN MARKING DETAIL
CROSSWALK LINES (PEDESTRIAN) A. DIAGONALS (BIKE & EQUESTRIAN) B. LONGITUDINAL BARS (SCHOOL)	2 @ 6 (150) 12 (300) @ 45° 12 (300) @ 90°	SOLID SOLID SOLID	WHITE WHITE WHITE	NOT LESS THAN 6' (1.8 m) APART 2' (600) APART 2' (600) APART SEE TYPICAL CROSSWALK MARKING DETAILS.
STOP LINES	24 (600)	SOLID	WHITE	PLACE 4' (1.2 m) IN ADVANCE OF AND PARALLEL TO CROSSWALK, IF PRESENT. OTHERWISE, PLACE AT DESIRED STOPPING POINT, PARALLEL TO CROSSROAD CENTERLINE, WHERE POSSIBLE
PAINTED MEDIANS	2 @ 4 (100) WITH 12 (300) DIAGONALS @ 45° NO DIAGONALS USED FOR 4' (1.2 m) WIDE MEDIANS	SOLID	YELLOW; TWO WAY TRAFFIC WHITE; ONE WAY TRAFFIC	11 (280) C-C FOR THE DOUBLE LINE SEE TYPICAL PAINTED MEDIAN MARKING.
GORE MARKING AND CHANNELIZING LINES	8 (200) WITH 12 (300) DIAGONALS @ 45°	SOLID	WHITE	DIAGONALS: 15' (4.5 m) C-C (LESS THAN 30MPH (50 km/h)) 20' (6 m) C-C 30MPH (50 km/h) TO 45MPH (70 km/h) 30' (9 m) C-C (OVER 45MPH (70 km/h))
RAILROAD CROSSING	24 (600) TRANSVERSE LINES; "RR" IS 5' (1.5 m) LETTERS; 16 (400) LINE FOR "X"	SOLID	WHITE	SEE STATE STANDARD 780001 AREA OF "R"=3.6 SQ. FT. (0.33 m ²) EACH "X"=54.0 SQ. FT. (5.0 m ²)
SHOULDER DIAGONALS	12 (300) @ 45°	SOLID	WHITE - RIGHT YELLOW - LEFT	50' (15 m) C-C (LESS THAN 30MPH (50 km/h)) 75' (25 m) C-C (30 MPH (50 km/h) TO 45MPH (70 km/h)) 150' (45 m) C-C (OVER 45MPH (70 km/h))

FOR FURTHER DETAILS ON PAVEMENT MARKING REFER TO STANDARD SPECIFICATIONS FOR ROAD AND BRIDGE CONSTRUCTION AND STATE STANDARD 780001.

All dimensions are in inches (millimeters) unless otherwise shown.

FILE NAME =
 N:\ROLLINGMEADOWS\98361BR96A\C:\v1\PMK2

USER NAME = ESIDORCZ
 98361BR96A.SHT
 PLOT SCALE = 1'
 PLOT DATE = 7/14/2011

DESIGNED - BMW
 DRAWN - MYG
 CHECKED - JGS
 DATE - 7/14/2011

REVISED -
 REVISED -
 REVISED -
 REVISED -

STATE OF ILLINOIS
 DEPARTMENT OF TRANSPORTATION

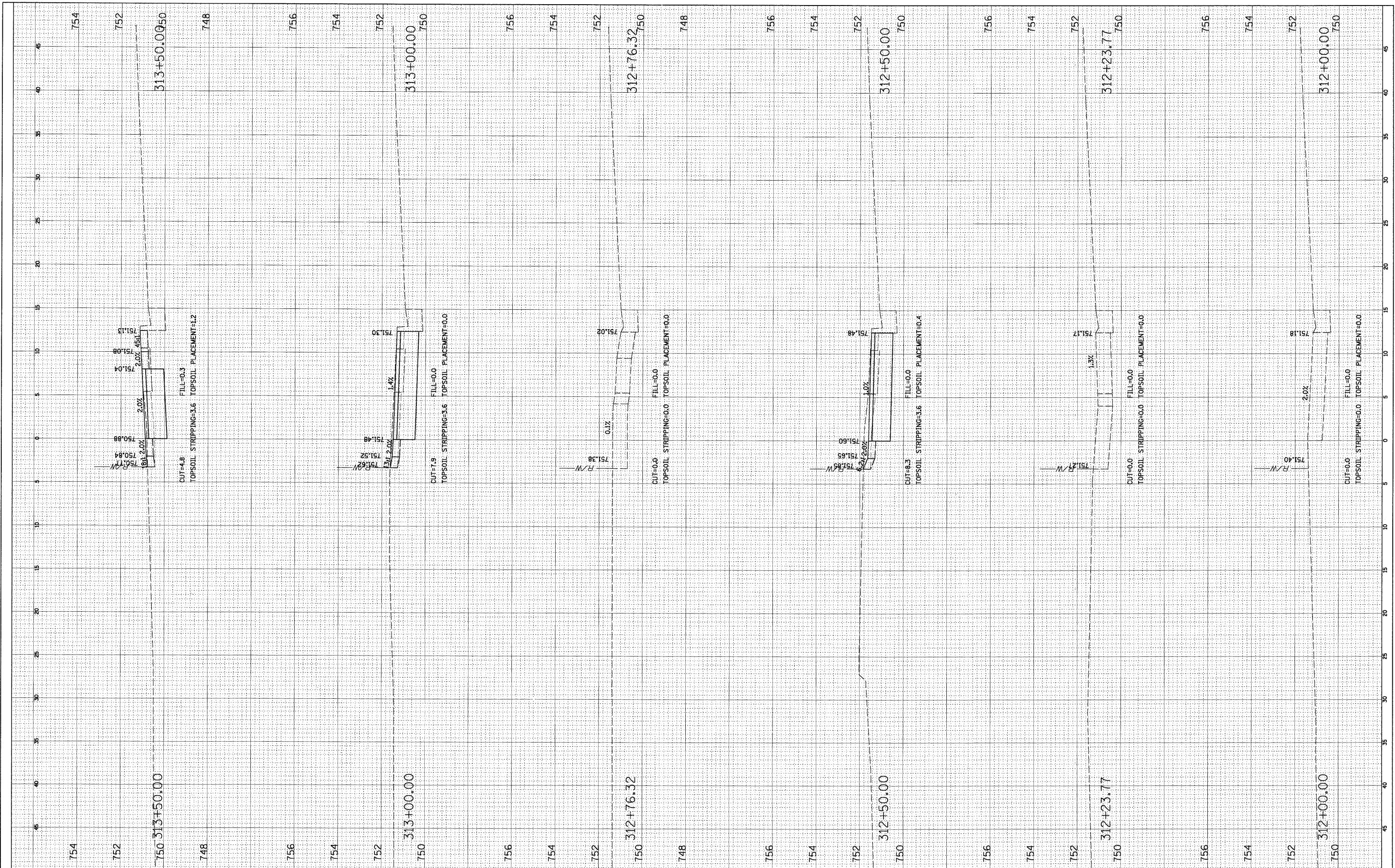
PLUM GROVE ROAD BIKE PATH
 DISTRICT ONE
 TYPICAL PAVEMENT MARKINGS

SCALE: SHEET NO. OF SHEETS STA. TO STA.

F.A. RTE.	SECTION	COUNTY	TOTAL SHEETS	SHEET NO.
	07-00094-00-BT	COOK	18	13
	TC-13			CONTRACT NO. 63356
		ILLINOIS	FED. AID PROJECT	

FINAL SURVEY	SURVEYED	BY	DATE
NOTE BOOK NO.	PLOTTED		
	TEMPLATE		
	AREAS CHECKED		

ORIGINAL SURVEY	SURVEYED	BY	DATE
NOTE BOOK NO.	PLOTTED		
	TEMPLATE		
	AREAS CHECKED		



FILE NAME = N:\ROLLINGMEADOWS\98361BR96A\C1\1\LAY_98361BR96A.SHT

USER NAME = ESIDORCZ
 DESIGNED -
 DRAWN -
 CHECKED -
 DATE -

DESIGNED -
 DRAWN -
 CHECKED -
 DATE -

REVISED -
 REVISED -
 REVISED -
 REVISED -

**STATE OF ILLINOIS
 DEPARTMENT OF TRANSPORTATION**

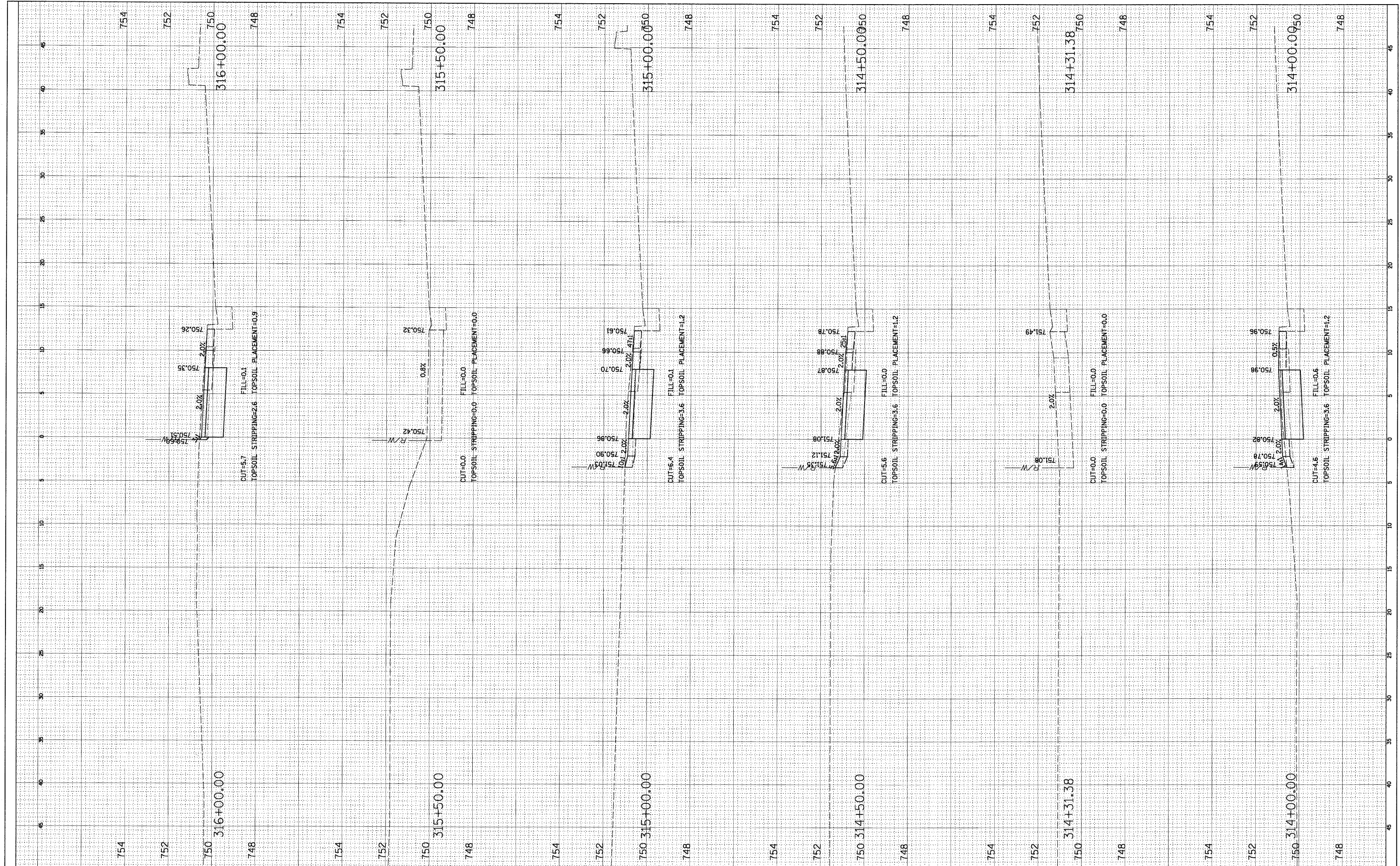
**PLUM GROVE ROAD BIKE PATH
 CROSS SECTIONS**

SCALE: SHEET NO. OF SHEETS STA. TO STA.

F.A. RTE.	SECTION	COUNTY	TOTAL SHEETS	SHEET NO.
	07-00094-00-BT	COOK	18	14
CONTRACT NO.				
ILLINOIS FED. AID PROJECT				

ORIGINAL SURVEY NO.	BY	DATE
SURVEYED		
PLOTTED		
NOTE BOOK		
AREAS CHECKED		

FINAL SURVEY NO.	BY	DATE
SURVEYED		
PLOTTED		
NOTE BOOK		
AREAS CHECKED		



FILE NAME =	USER NAME = ESIDORCZ	DESIGNED -	REVISED -
N:\ROLLINGMEADOWS\98361BR96A\C\1\LAY_98361BR96A.SHT		DRAWN -	REVISED -
PLOT SCALE = 5'		CHECKED -	REVISED -
PLOT DATE = 7/14/2011		DATE -	REVISED -

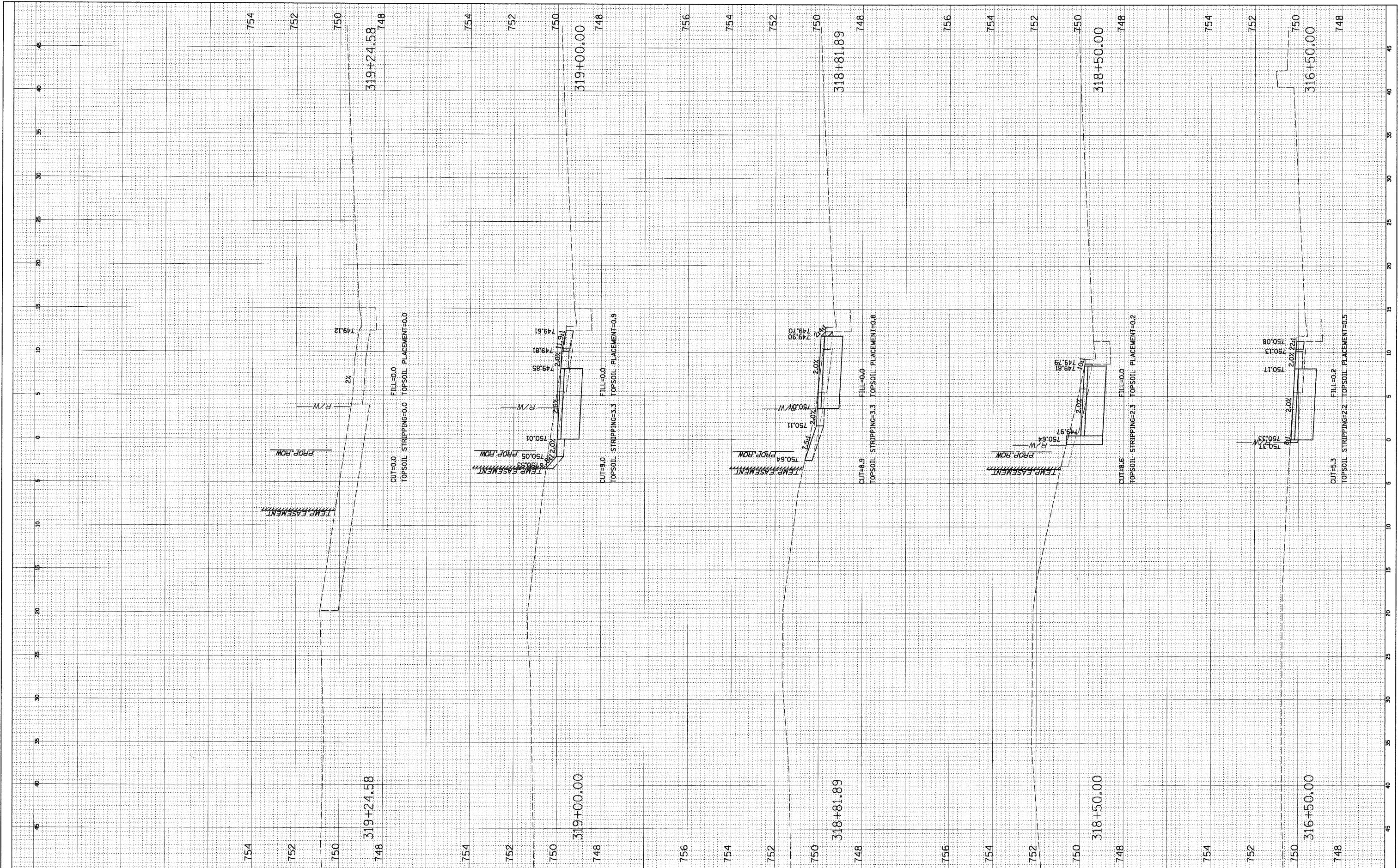
**STATE OF ILLINOIS
DEPARTMENT OF TRANSPORTATION**

PLUM GROVE ROAD BIKE PATH CROSS SECTIONS			
SCALE:	SHEET NO.	OF SHEETS	STA. TO STA.

F.A. RTE.	SECTION	COUNTY	TOTAL SHEETS	SHEET NO.
	07-00094-00-BT	COOK	18	15
CONTRACT NO.				
ILLINOIS FED. AID PROJECT				

FINAL SURVEY	SURVEYED	BY	DATE
NOTE BOOK NO.	PLOTTED		
	TEMPLATE		
	AREAS CHECKED		

ORIGINAL SURVEY	SURVEYED	BY	DATE
NOTE BOOK NO.	PLOTTED		
	TEMPLATE		
	AREAS CHECKED		



FILE NAME = N:\ROLLINGMEADOWS\98361BR96A\Civil\LAY_98361BR96A.SHT
 USER NAME = ESJDDRCZ
 DESIGNED -
 DRAWN -
 CHECKED -
 DATE -

DESIGNED -
 DRAWN -
 CHECKED -
 DATE -

REVISÉ -
 REVISÉ -
 REVISÉ -
 REVISÉ -

**STATE OF ILLINOIS
 DEPARTMENT OF TRANSPORTATION**

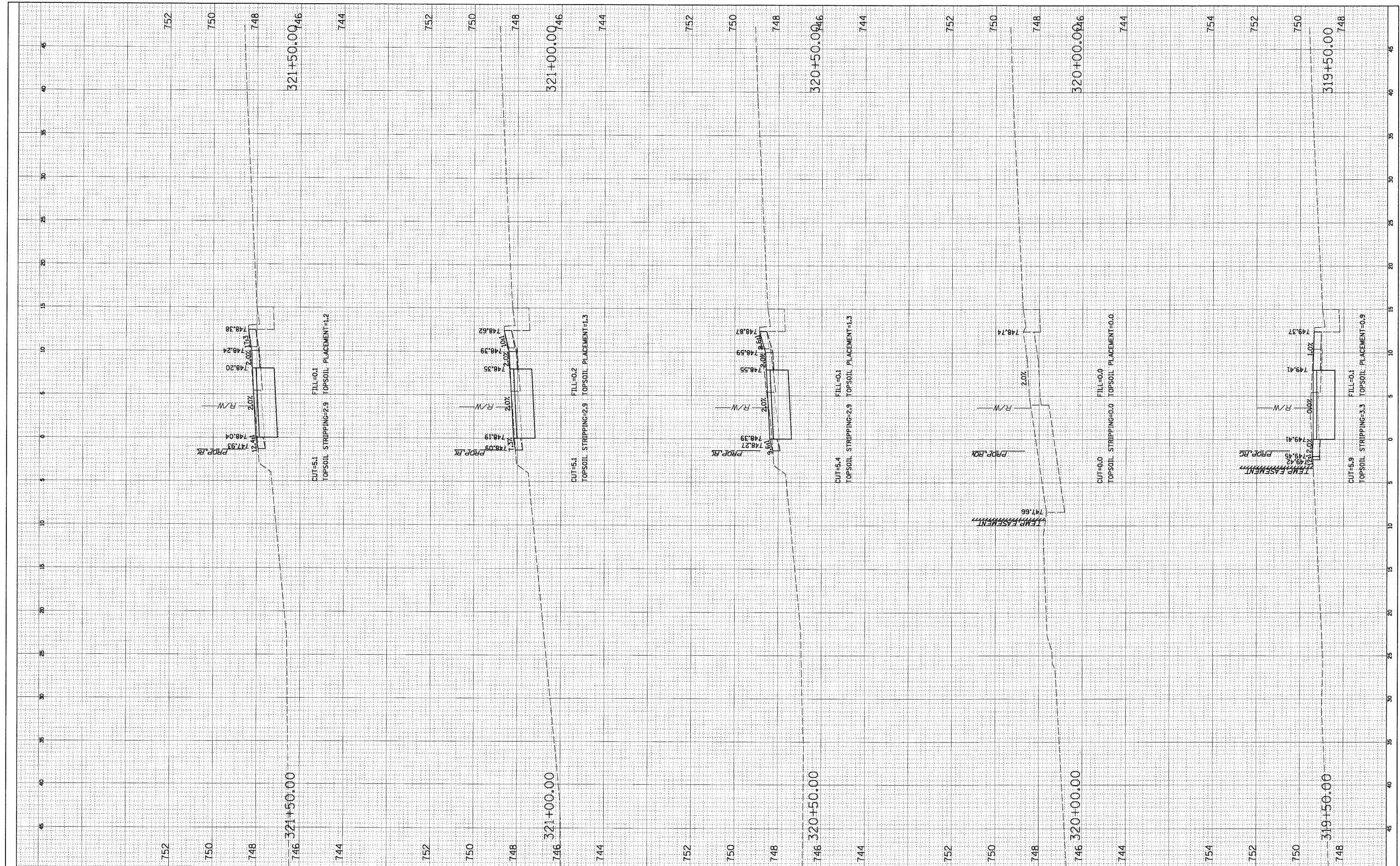
**PLUM GROVE ROAD BIKE PATH
 CROSS SECTIONS**

SCALE: SHEET NO. OF SHEETS STA. TO STA.

F.A. RTE.	SECTION	COUNTY	TOTAL SHEETS	SHEET NO.
	07-00094-00-BT	COOK	18	16
CONTRACT NO.				
ILLINOIS FED. AID PROJECT				

FINAL SURVEY	SURVEYED	BY	DATE
NOTE BOOK	PLOTTED		
NO.	TEMPLATE		
	AREAS CHECKED		
	APRALS CHECKED		

ORIGINAL SURVEY	SURVEYED	BY	DATE
NOTE BOOK	PLOTTED		
NO.	TEMPLATE		
	AREAS CHECKED		
	APRALS CHECKED		



FILE NAME = N:\ROLLINGMEADOWS\98361BR9EA\C:\v1\LAY_98361BR98A.SHT	USER NAME = ESIDORCZ	DESIGNED -	REVISED -	STATE OF ILLINOIS DEPARTMENT OF TRANSPORTATION	PLUM GROVE ROAD BIKE PATH CROSS SECTIONS			F.A. RTE.	SECTION	COUNTY	TOTAL SHEETS	SHEET NO.		
	PLOT SCALE = 5'	DRAWN -	REVISED -		SCALE:	SHEET NO.	OF	SHEETS	STA.	TO STA.	07-00094-00-BT	COOK	18	17
	PLOT DATE = 7/14/2011	CHECKED -	REVISED -								CONTRACT NO.			
		DATE -	REVISED -								ILLINOIS FED. AID PROJECT			

