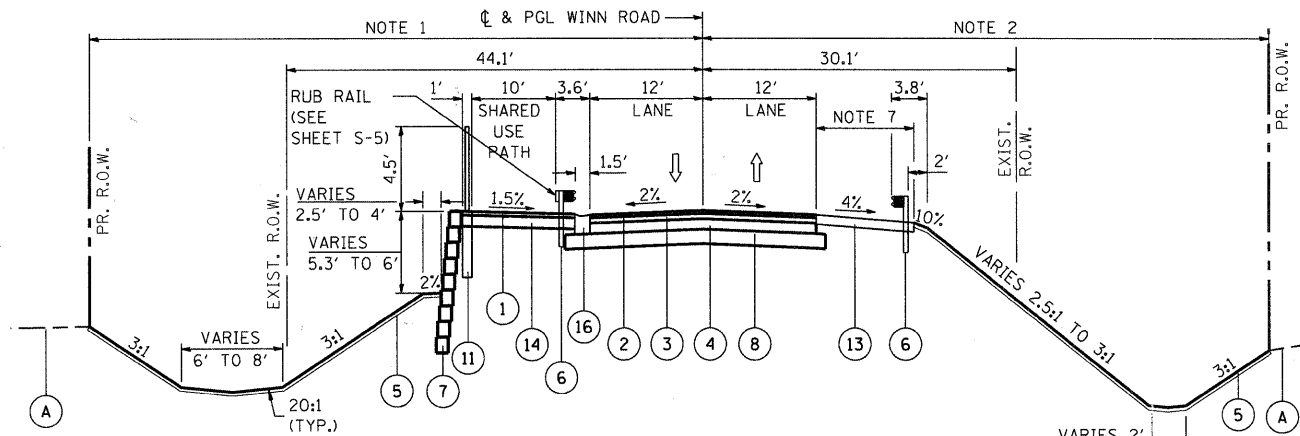


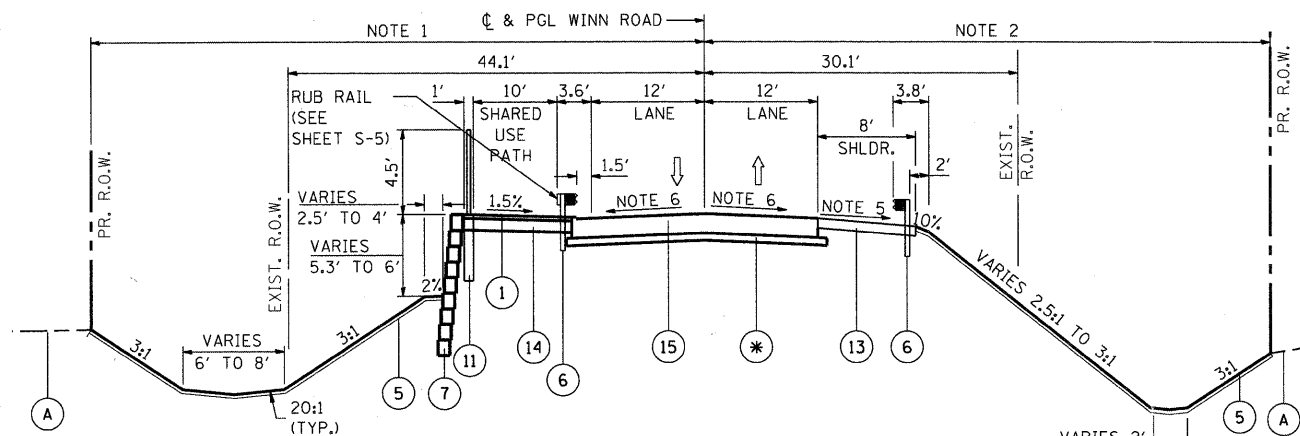
**PROPOSED TYPICAL SECTION
WINN ROAD**

STA. 28+00.00 TO STA. 28+89.19 (NOTE 9)



**PROPOSED TYPICAL SECTION
WINN ROAD**

STA. 28+89.19 TO STA. 29+56.49



**PROPOSED TYPICAL SECTION
WINN ROAD**

STA. 29+56.49 TO STA. 29+86.49

• SEE SHEET S-5

EXISTING LEGEND

- (A) EXISTING GROUND
- (B) EXISTING AGGREGATE SHOULDER (REMOVAL PAID FOR AS REMOVAL AND DISPOSAL OF UNSUITABLE MATERIAL)
- (C) EXISTING ASPHALT SHOULDER (REMOVAL PAID FOR AS PAVMENT REMOVAL)
- (D) EXISTING ASPHALT PAVEMENT (DEPTH VARIES 9" TO 12")
- (E) EXISTING METAL RAILING
- (F) EXISTING SUPERSTRUCTURE (PPC DECK BEAMS)**
- (G) EXISTING HOT-MIX ASPHALT OVERLAY (±5" THICK)**
- (H) EXISTING SUPERSTRUCTURE (CAST IN PLACE CONCRETE)**
- (I) EXISTING GUARDRAIL

INDICATES ITEMS TO BE REMOVED

** REMOVAL PAID FOR UNDER REMOVAL OF EXISTING STRUCTURE

PROPOSED LEGEND

- (1) HOT-MIX ASPHALT SURFACE COURSE MIX "C", N50 (2")
- (2) HOT-MIX ASPHALT SURFACE COURSE MIX "D" N70 (2")***
- (3) HOT-MIX ASPHALT BINDER COURSE, IL-19.0, N70 (2 1/2")***
- (4) HOT-MIX ASPHALT BASE COURSE, 7 1/2"***
- (5) TOPSOIL FURNISH AND PLACE, 4" AND SEEDING, CLASS 4
- (6) STEEL PLATE BEAM GUARDRAIL, TYPE A, 9' FOOT POST
- (7) SEGMENTAL CONCRETE BLOCK WALL (SEE BRIDGE PLANS)
- (8) AGGREGATE SUBGRADE 12"
- (9) PRECAST, PRESTRESSED CONCRETE DECK BEAMS (27" DEPTH) (SEE BRIDGE PLANS)
- (10) CONCRETE PARAPET WALL- CONCRETE SUPERSTRUCTURE (SEE BRIDGE PLANS)
- (11) BICYCLE RAILING (SEE BRIDGE PLANS)
- (12) PARAPET RAILING (SEE BRIDGE PLANS)
- (13) HOT-MIX ASPHALT SHOULDERS, 6"
- (14) SUB-BASE GRANULAR MATERIAL, TYPE B 6"
- (15) BRIDGE APPROACH SLAB (SEE BRIDGE PLANS)
- (16) COMBINATION CONCRETE CURB AND GUTTER, TYPE B-6.12 (DEPRESSED)

*** PAID FOR UNDER HOT-MIX ASPHALT PAVEMENT (FULL DEPTH), 12"

NOTE 1:
VARIES 50' TO 60' STA. 28+00.00 TO STA. 28+85.61
60' STA. 28+85.61 TO STA. 30+39.63
70' STA. 31+06.65 TO STA. 33+04.95

NOTE 2:
VARIES 20' TO 40' STA. 28+00 TO STA. 29+95.63
40' TO 60' STA. 29+50.63 TO STA. 30+20.83
50' TO 60' STA. 30+20.83 TO STA. 33+07.91

NOTE 3:
NOT USED

NOTE 4:
2% SLOPE AWAY FROM ROAD STA. 28+00 TO STA. 28+50
VARIES FROM 2% AWAY FROM ROAD TO 1.5% TOWARD ROAD FROM STA. 28+50 TO STA. 28+89.19
VARIES FROM 1.5% TOWARDS ROAD TO 2% AWAY FROM ROAD FROM STA. 31+27.07 TO STA. 31+57.07

NOTE 5:
VARIES FROM 4% TO 1.5% FROM STA. 29+56.49 TO STA. 29+86.46
VARIES FROM 1.5% TO 4% FROM STA. 31+27.07 TO STA. 31+57.07

NOTE 6:
VARIES FROM 2% TO 1.5% FROM STA. 29+56.49 TO STA. 29+86.49
VARIES FROM 1.5% TO 2% FROM STA. 31+27.07 TO STA. 31+57.07

NOTE 7:
5' STA. 28+50 TO STA. 28+95.75
8' STA. 28+95.75 TO STA. 29+56.49

NOTE 8:
COMBINATION CONCRETE CURB AND GUTTER, TYPE B-6.12 (DEPRESSED) FROM STA. 31+57.07 TO STA. 31+77.42

NOTE 9:
FROM STA. 28+00 TO STA. 28+50 2" HMA RESURFACING, SEE REMOVAL PLAN AND PLAN AND PROFILE

COMPANY NAME: SEC GROUP, INC.
PROJECT CONTACT: Robert G. Davies
CLIENT: Village of Spring Grove
DATE PLOTTED: 6/23/2011 2:17:00 PM
FILE NAME: 090221.txd
PEN TABLE: standard.trans.tbl

SEC Group, Inc.
An HR Group Company
400 N. First Street
Maitland, FL 32751-1778
1-813-965-1778 | 1-813-965-1781
www.secgroupinc.com
© 2011 SEC Group, Inc. All Rights Reserved.

USER NAME = whood	DESIGNED - KMA	REVISED -
FILE NAME = 090221.txd	DRAWN - WJH	REVISED -
PLOT SCALE = N.T.S.	CHECKED - RGD	REVISED -
PLOT DATE = 6/23/2011	DATE - 6/23/11	REVISED -

VILLAGE OF SPRING GROVE

**TYPICAL SECTIONS
WINN ROAD**

SCALE: N.T.S.	SHEET NO.	OF SHEETS	STA.	TO STA.
---------------	-----------	-----------	------	---------

F.A.U. RTE.	SECTION	COUNTY	TOTAL SHEETS	SHEET NO.
0157	07-00012-00-BR	MCHENRY	41	5
FED. ROAD DIST. NO.			ILLINOIS FED. AID PROJECT	
			CONTRACT NO. 63544	