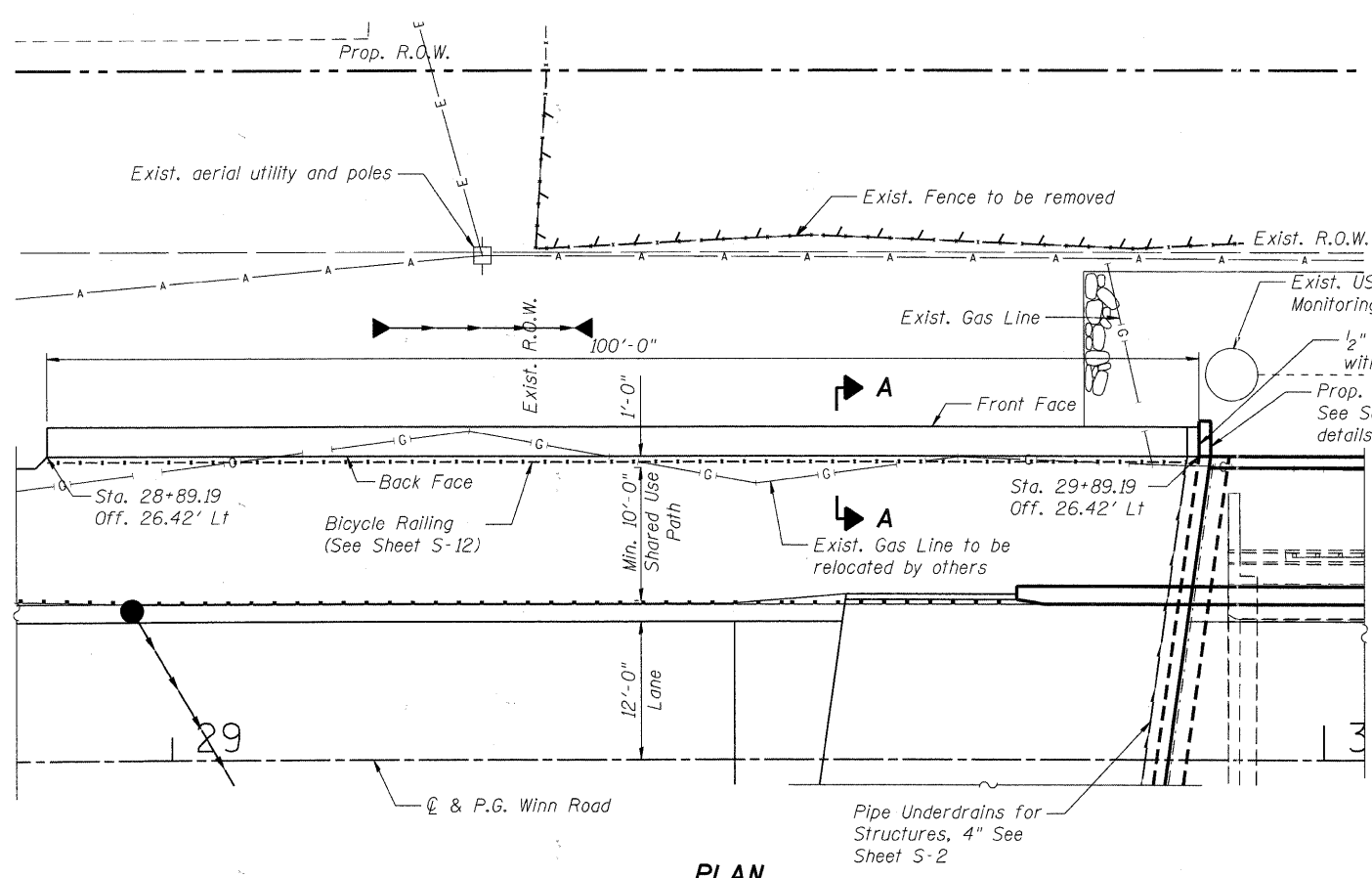
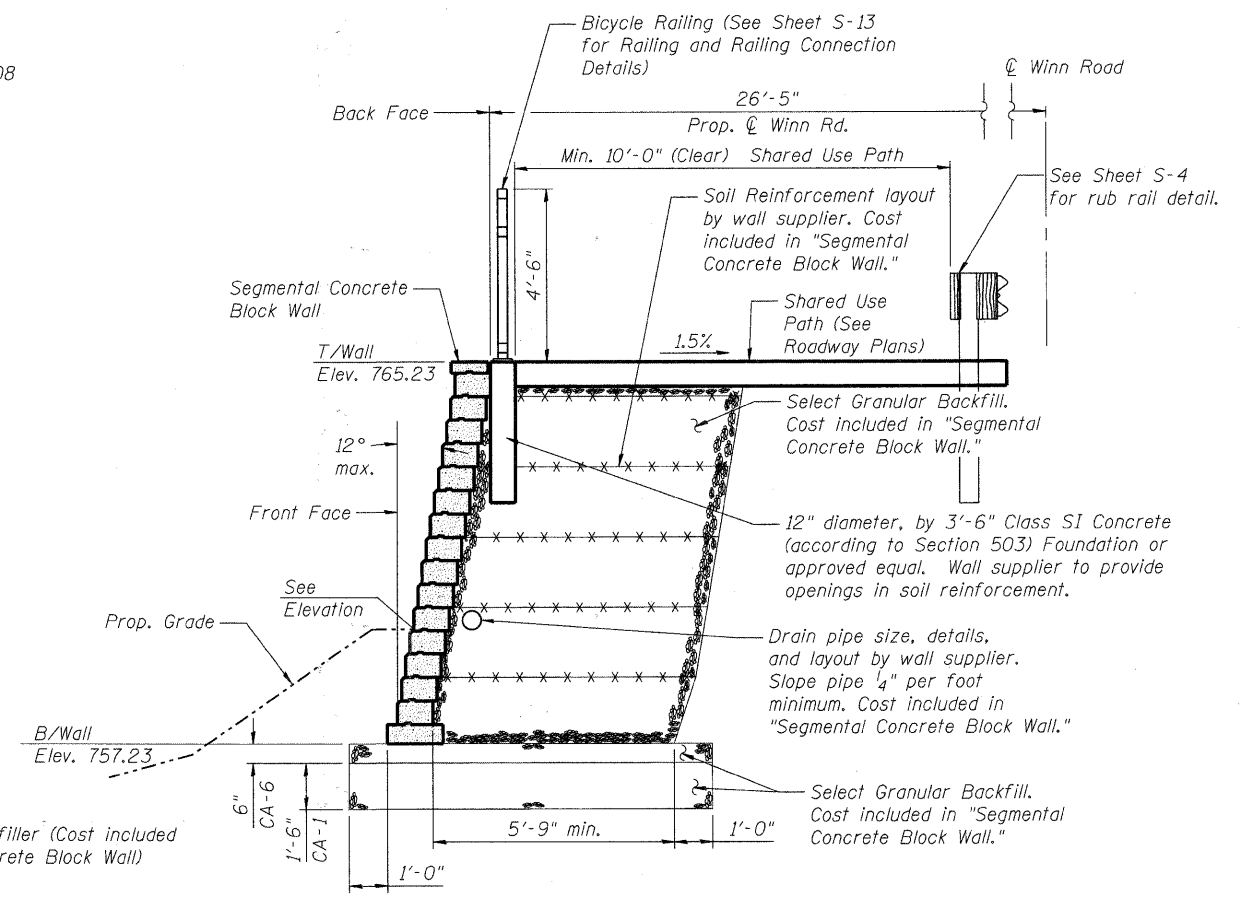


WALL ELEVATION
(Looking West)



PLAN



SECTION A-A

Shown at Bicycle Railing Post
See Roadway Plans for additional information

TOTAL BILL OF MATERIAL

ITEM	UNIT	TOTAL
Segmental Concrete Block Wall	Sq. Ft.	800
Structure Excavation	Cu. Yd.	200

SOUTHWEST RETAINING WALL DETAILS

WINN ROAD
OVER NIPPERSINK CREEK
F.A.U. ROUTE 0157
SECTION NO. 07-00012-00-BR
MCHENRY COUNTY
STATION 30+56.78
STRUCTURE NO. 056-6123

Excavation required for installation of Segmental Concrete Block Wall shall be done in accordance with the applicable portions of Section 502 of the Standard Specifications and will be paid for as Structure Excavation.

The color of the wall shall be approved by the Engineer.

DESIGNED	JMW
CHECKED	RGD
DRAWN	RCB
CHECKED	RGD



SEC GROUP INC.
An HR Green Company
420 N. Front Street, McHenry, IL 60050
T. 815.385.1778 F. 815.385.1761
www.secgroupinc.com
McHenry, IL • Yorkville, IL • New Lenox, IL • Chicago, IL

SHEET NO. S-3 S-20 SHEETS	F.A.U. RTE.	SECTION	COUNTY	TOTAL SHEETS	SHEET NO.
	0157	07-00012-00-BR	McHENRY	41	15
FED. ROAD DIST. NO. 1 ILLINOIS			FED. AID PROJECT BRM-8003 (921)		
CONTRACT NO. 63544					

DATE: 6/23/11

FILE NAME: 09212_w001.dgn
PLOT DRIVER: plot.plt
PEN TABLE: standard-trans.tbl