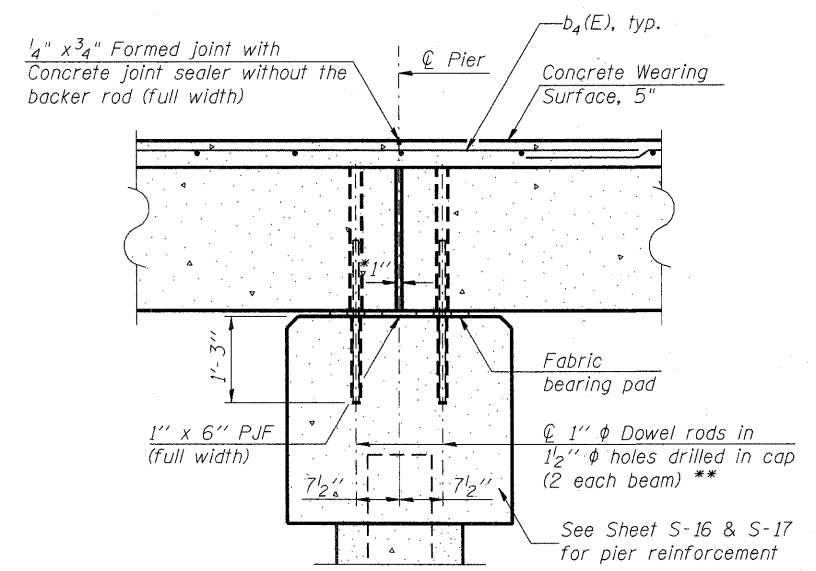


PARTIAL PLAN

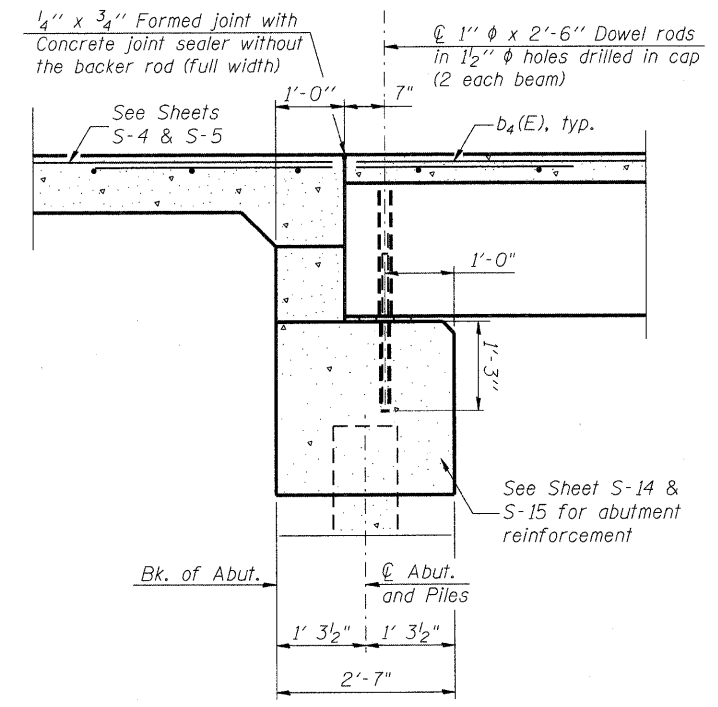


SECTION B-B THRU PIER CAP

(With concrete wearing surface)
 (Dimensions are at Rt. L's)

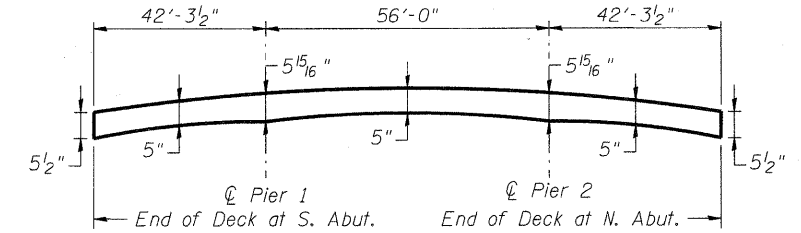
* 1" Joint shall be filled with non-shrink grout. 1" dimension may vary to accommodate tolerance in beam length.

** 2'-6" long



SECTION A-A

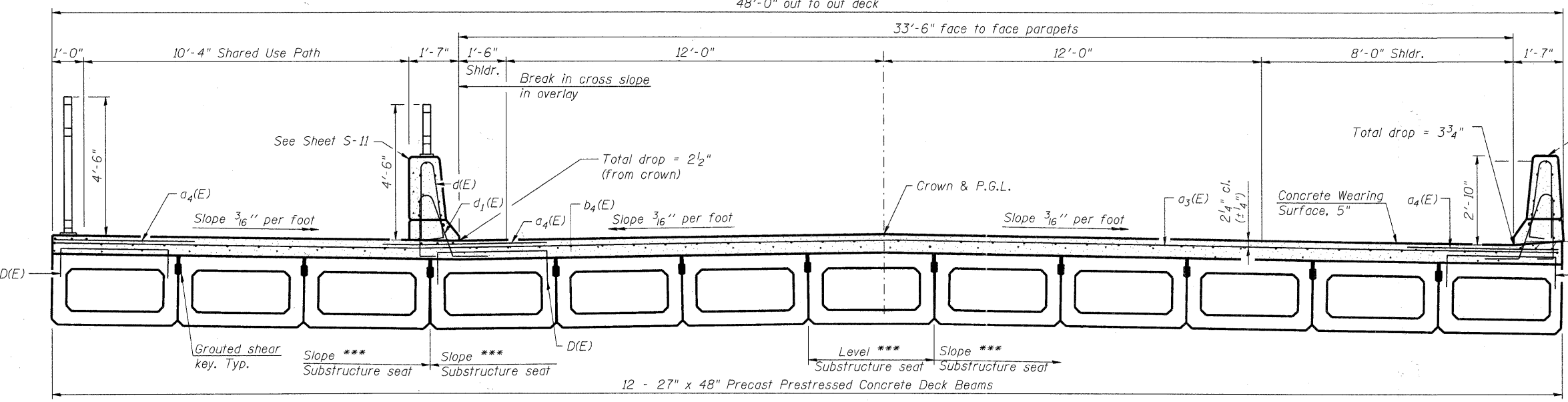
(Dimensions are at Rt. L's)



ANTICIPATED CONCRETE WEARING SURFACE PROFILE

(For information only)
 Thickness is based on calculated camber and deflection of PPC Deck Beams. Actual camber of individual units may vary up to ±1/2". Adjust thickness to match PGL and cross slope.

Notes:
 See sheet S-11 and S-12 for Superstructure Details and Bill of Material.
 Bars indicated thus 20 x 2-#4 etc. indicates 20 lines of bars with 2 lengths per line.
 Spacing of a3(E) and a4(E) bars shall be measured along the centerline of structure.



DECK PLAN AND CROSS SECTION

**WINN ROAD
 OVER NIPPERSINK CREEK
 F.A.U. ROUTE 0157
 SECTION NO. 07-00012-00-BR
 MCHENRY COUNTY
 STATION 30+56.78
 STRUCTURE NO. 056-6123**

CROSS SECTION

(Looking North)

*** See Pier and Abutment Details

MINIMUM BAR LAP

#4 bar = 2'-7"

DESIGNED	JMW
CHECKED	RGD
DRAWN	RCB
CHECKED	RGD



SEC GROUP, INC.
 An HR Green Company
 420 N. Front Street, Mchenry, IL 60050
 L 815.385.1778 F 815.385.1781
 www.secgroupinc.com
 Mchenry, IL • Yorkville, IL • New Lenox, IL • Chicago, IL

SHEET NO. S-8	F.A.U. RTE.	SECTION	COUNTY	TOTAL SHEETS	SHEET NO.
	0157	07-00012-00-BR	MCHENRY	41	20
S-20 SHEETS					
CONTRACT NO. 63544					
FED. ROAD DIST. NO. 1 ILLINOIS FED. AID PROJECT BRM-8003 (921)					

DATE: 6/23/11