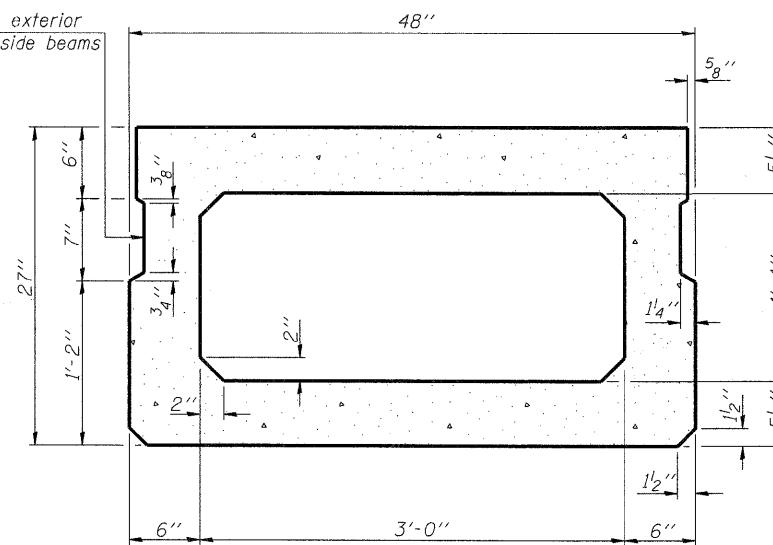


**SECTION C-C**

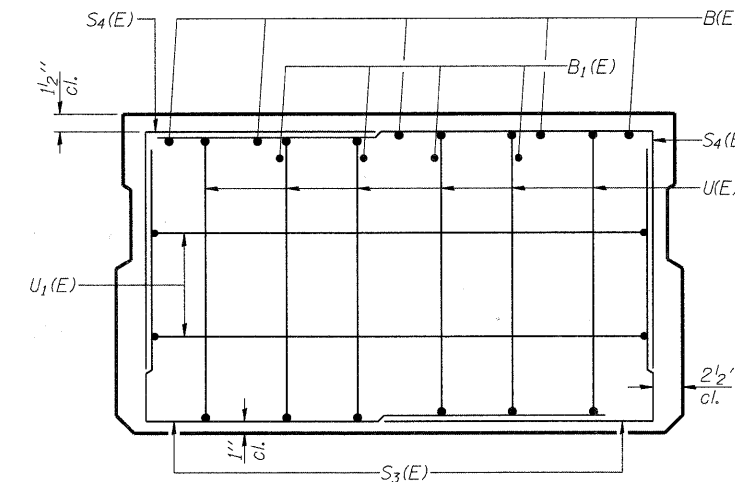
Omit key on exterior face of outside beams



**SECTION A-A**

(Showing dimensions)

Layer	SPAN 1 & 3	SPAN 2
A	6	10
B	8	12
C	2	0
D	0	2



**VIEW B-B**

**BAR LIST ONE BEAM ONLY (SPAN 2)**

(For information only)

Bar	No.	Size	Length	Shape
A(E)	51	#4	3'-7"	—
B(E)	5	#5	55'-8"	—
B1(E)	4	#4	55'-8"	—
D(E)*	74	#4	5'-7"	┌
S(E)	75	#4	7'-5"	┌
S1(E)	8	#4	6'-11"	┌
S2(E)	67	#4	7'-2"	┌
S3(E)	12	#4	4'-9"	┌
S4(E)	12	#4	4'-6"	┌
U(E)	12	#5	4'-6"	┌
U1(E)	4	#4	6'-6 1/2"	┌

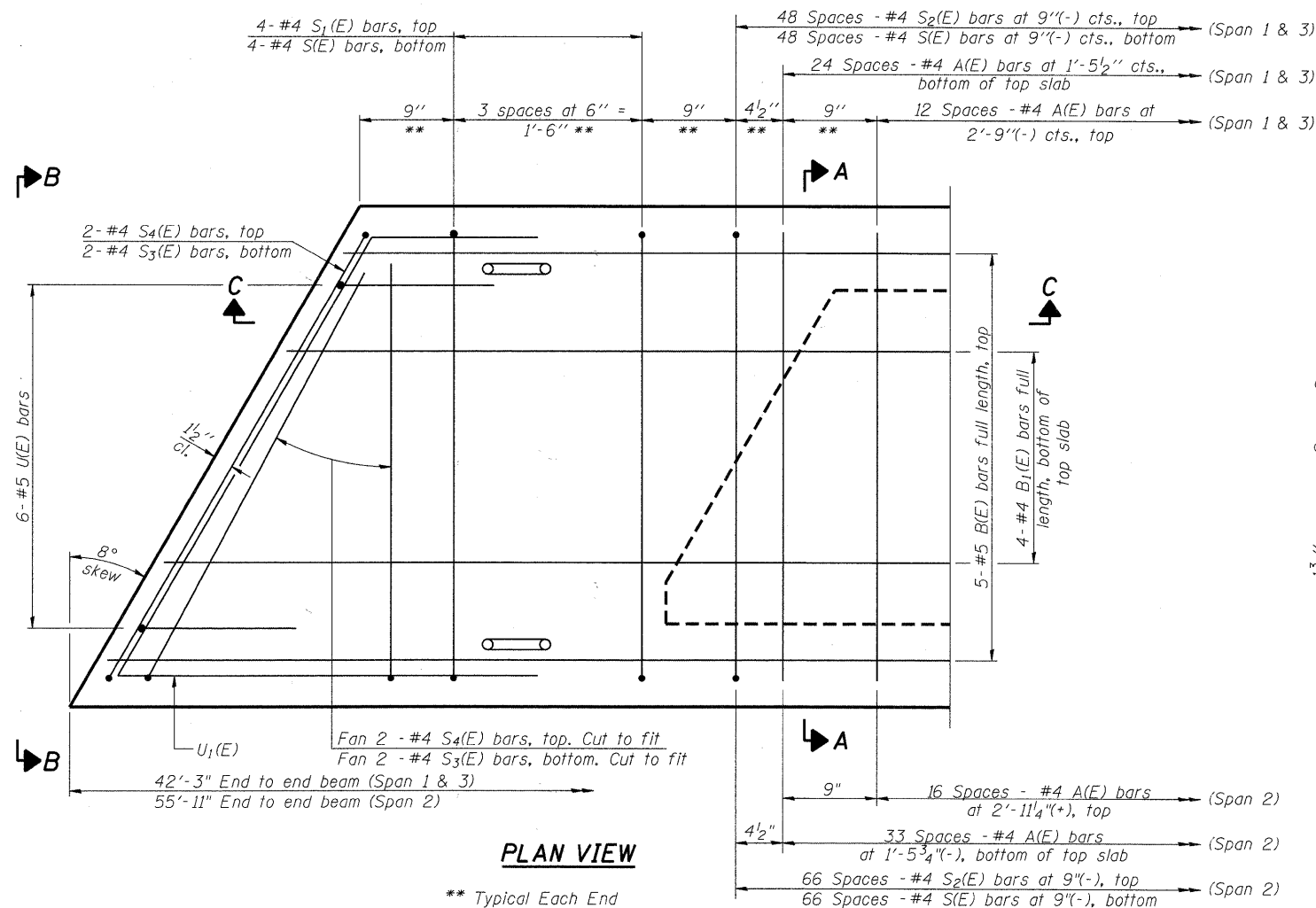
**BAR LIST ONE BEAM ONLY (SPANS 1 & 3)**

(For information only)

Bar	No.	Size	Length	Shape
A(E)	38	#4	3'-7"	—
B(E)	5	#5	42'-0"	—
B1(E)	4	#4	42'-0"	—
D(E)*	56	#4	5'-7"	┌
S(E)	57	#4	7'-5"	┌
S1(E)	8	#4	6'-11"	┌
S2(E)	49	#4	7'-2"	┌
S3(E)	12	#4	4'-9"	┌
S4(E)	12	#4	4'-6"	┌
U(E)	12	#5	4'-6"	┌
U1(E)	4	#4	6'-6 1/2"	┌

Note: See sheet S-12 for additional details and Bill of Material.

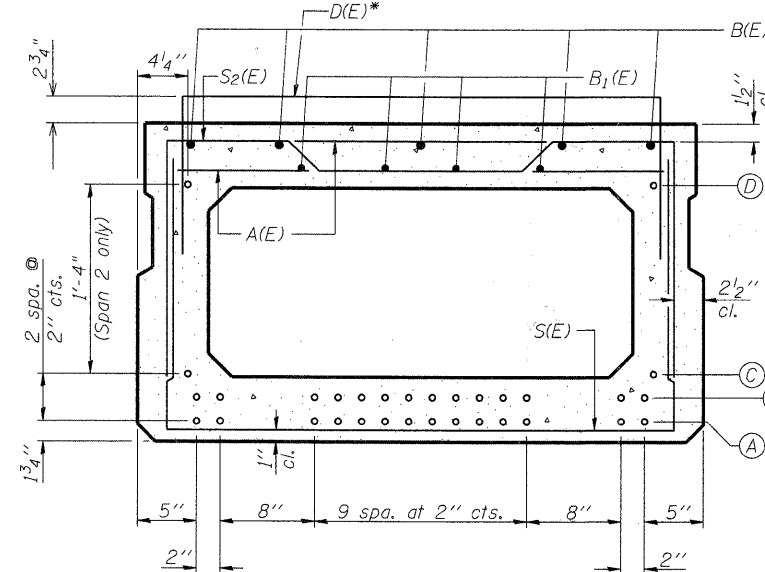
\* Quantity of D(E) bars in the tables above are for one beam only. D(E) bars are present in only 3 beams in each span. See Sheet S-8 for locations.



**PLAN VIEW**

\*\* Typical Each End

Note: Spacing of S(E) and S2(E) bars may be adjusted up to 4" in the immediate area of the transverse tie diaphragms to miss the block outs for the transverse ties.



**SECTION A-A**

(Showing reinforcement and permissible strand locations)

Note: Place the number of strands specified in each row symmetrically about the centerline of beam in the permissible strand locations shown.

**SUPERSTRUCTURE DETAILS**

**WINN ROAD  
OVER NIPPERSINK CREEK  
F.A.U. ROUTE 0157  
SECTION NO. 07-00012-00-BR  
MCHENRY COUNTY  
STATION 30+56.78  
STRUCTURE NO. 056-6123**

DATE: 6/23/11

DESIGNED	JMW
CHECKED	RGD
DRAWN	RCB
CHECKED	RGD



**SEC GROUP, INC.**  
An ITR Green Company  
420 N. Front Street, McHenry, IL 60050  
L 815.385.1778 F 815.385.1781  
www.secgroupinc.com  
McHenry, IL • Yorkville, IL • New Lenox, IL • Chicago, IL

SHEET NO.	F.A.U. RTE.	SECTION	COUNTY	TOTAL SHEETS	SHEET NO.
S-9	0157	07-00012-00-BR	MCHENRY	41	21
S-20 SHEETS					
CONTRACT NO. 63544					
FED. ROAD DIST. NO. 1 ILLINOIS FED. AID PROJECT BRM-8003 (921)					