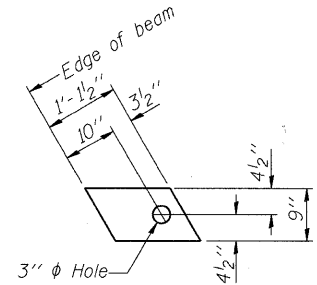


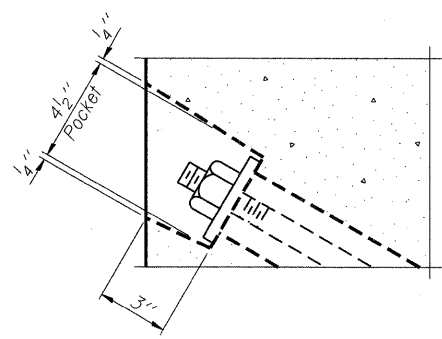
**FABRIC BEARING PAD**  
(Interior)



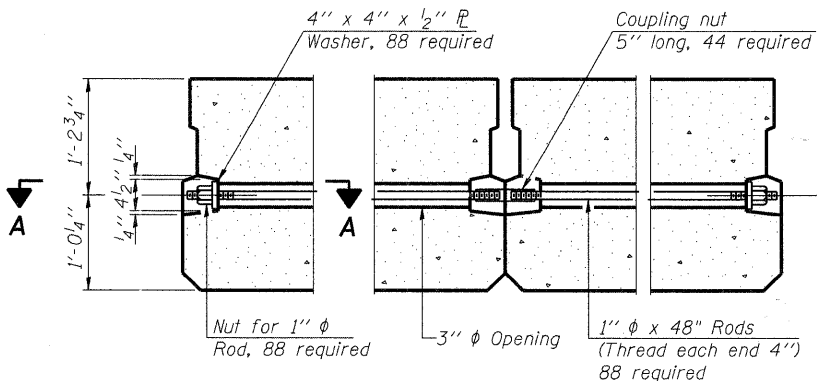
**FABRIC BEARING PAD**  
(Exterior)

**FIXED**

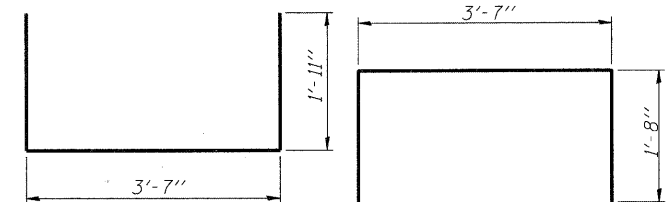
Notes:  
All bearing pads shall be 1" thick.



**SECTION A-A**

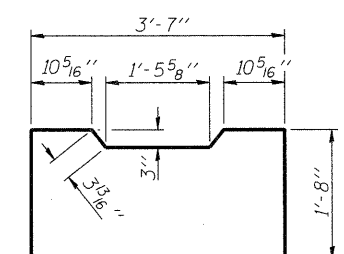


**TYPICAL TRANSVERSE TIE ASSEMBLY**

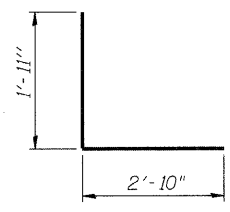


**BAR S1(E)**

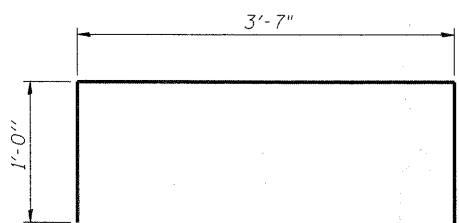
**BAR S2(E)**



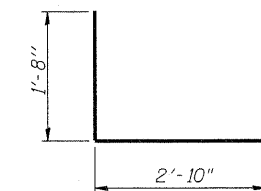
**BAR S2(E)**



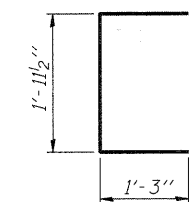
**BAR S3(E)**



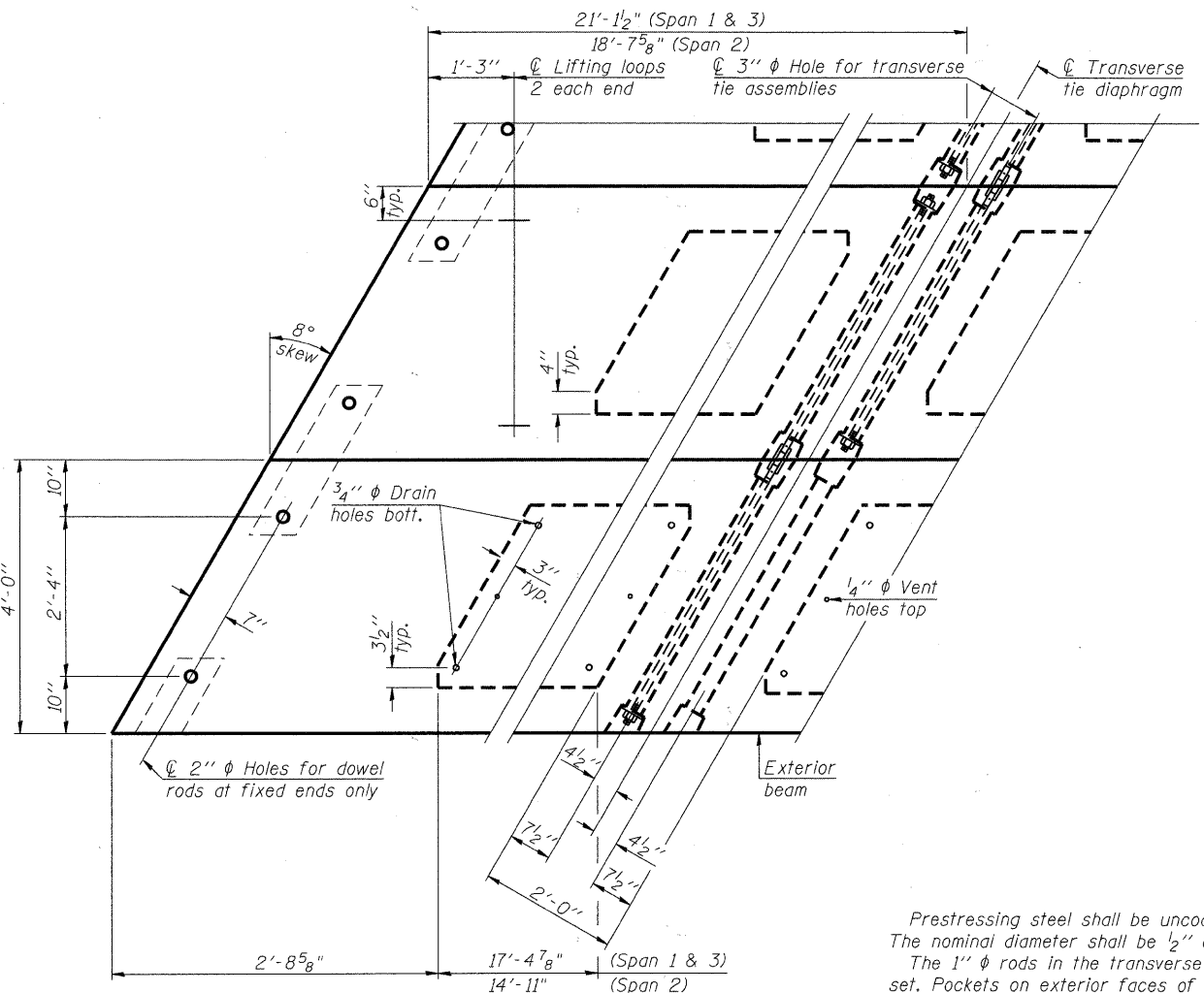
**BAR D(E)**



**BAR S4(E)**

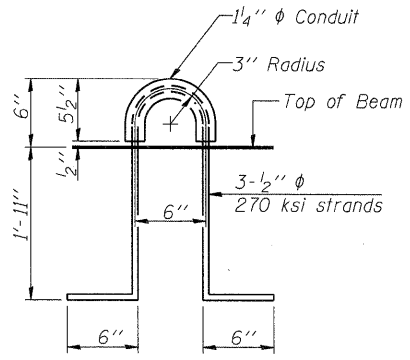


**BAR U(E)**



**PLAN VIEW**

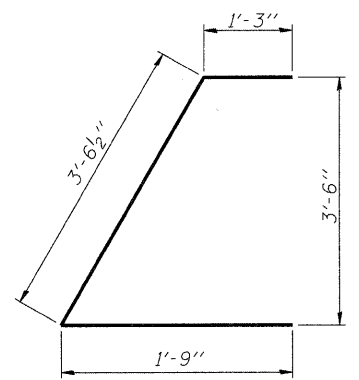
Note: Connect beams in pairs with the transverse tie configuration shown.



**LIFTING LOOP DETAIL**

**BILL OF MATERIAL**

Precast Prestressed Conc. Deck Bms. (27" depth)	Sq. Ft.	6,740
---	---------	-------



**BAR U1(E)**

**NOTES**

- Prestressing steel shall be uncoated high strength, low relaxation 7-wire strand, Grade 270. The nominal diameter shall be 1/2" and the nominal cross-sectional area shall be 0.153 sq. in.
- The 1" rods in the transverse tie assembly shall be tightened to a snug fit and the threads set. Pockets on exterior faces of bridge shall be filled with grout after transverse tie assembly is in place.
- Reinforcement bars shall conform to ASTM A 706, Grade 60. (See Special Provisions).
- Two 1/8" fabric adjusting shims of the dimensions of the exterior bearing pad shall be provided for each bearing pad location.
- A minimum 2 1/2" diameter lifting pin shall be used to engage the lifting loops during handling.
- Corrosion Inhibitor, per Article 1020.05(b)(12) and 1021.06 of the Standard Specifications, shall be used in the concrete for precast prestressed concrete deck beams.
- Compressive strength of prestressed concrete, f'c, shall be 6000 psi.
- Compressive strength of prestressed concrete at release, f'ci, shall be 5000 psi.

**SUPERSTRUCTURE DETAILS**  
**WINN ROAD**  
**OVER NIPPERSINK CREEK**  
**F.A.U. ROUTE 0157**  
**SECTION NO. 07-00012-00-BR**  
**MCHENRY COUNTY**  
**STATION 30+56.78**  
**STRUCTURE NO. 056-6123**

DATE: 6/23/11

DESIGNED	JMW
CHECKED	RGD
DRAWN	RCB
CHECKED	RGD

FILE NAME: 09202 ch03.dgn  
PLOT DRIVER: pld.plt  
PEN TABLE: standar-trans.tbl



**SEC GROUP, INC.**  
An HR Green Company  
420 N. Front Street, McHenry, IL 60050  
1.815.385.1778 F. 815.385.1781  
www.secgroupinc.com  
McHenry, IL • Yorkville, IL • New Lanx, IL • Chicago, IL

SHEET NO. <b>S-10</b>	F.A.U. RTE.	SECTION	COUNTY	TOTAL SHEETS	SHEET NO.
	0157	07-00012-00-BR	McHENRY	41	22
<b>S-20</b> SHEETS	CONTRACT NO. 63544				
	FED. ROAD DIST. NO. 1	ILLINOIS	FED. AID PROJECT	BRM-8003 (921)	