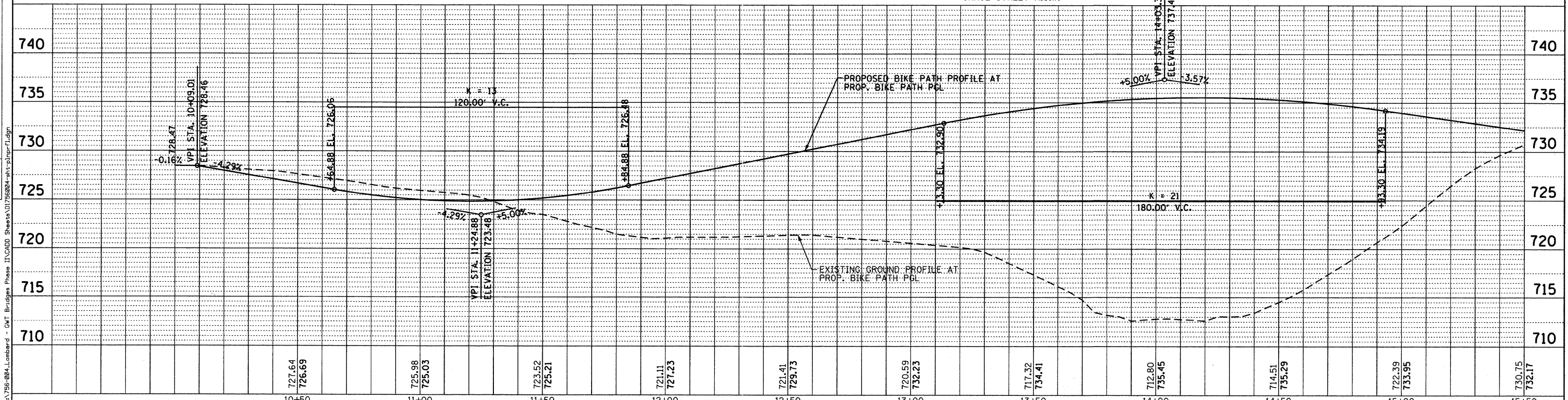
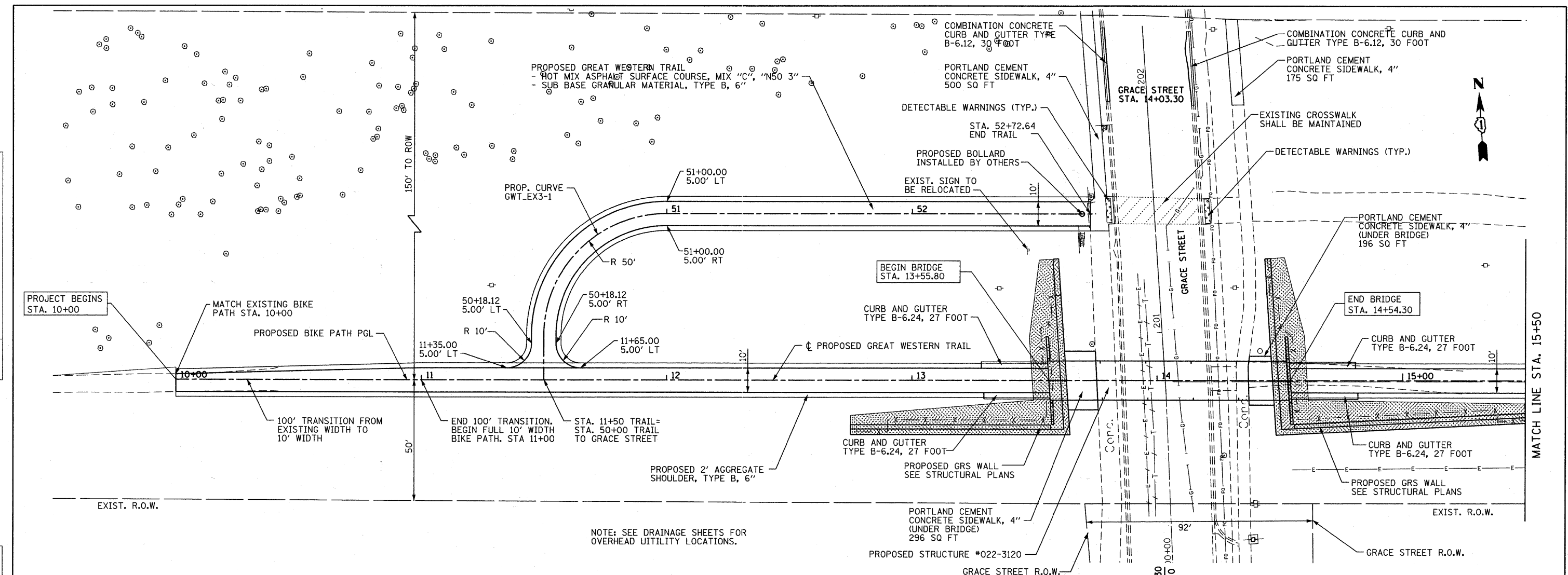


DATE	
BY	
PLAN	
NO.	
NO.	
NO.	
NO.	
NO.	

DATE	
BY	
PROFILE	
NO.	
NO.	
NO.	
NO.	
NO.	



B Bollinger, Lach & Associates, Inc.
ITASCA, ILLINOIS

USER NAME = delj	DESIGNED - BD	REVISED -
PLOT SCALE = 20.00' / IN.	DRAWN - DC	REVISED -
PLOT DATE = 7/22/2011	CHECKED - BD	REVISED -
	DATE - 10/22/2010	REVISED -

**STATE OF ILLINOIS
GREAT WESTERN TRAIL**

PLAN AND PROFILE	
HORIZ. 1"=20'	SCALE: VERT. 1"=5'
SHEET NO.	SHEETS
STA. 10+00	TO STA. 15+50

F.A. RTE.	SECTION	COUNTY	TOTAL SHEETS	SHEET NO.
	06-00151-00-BR	DUPAGE	201	22
CONTRACT NO. 63568			FED. ROAD DIST. NO. 1 ILLINOIS FED. AID PROJECT	

FILE NAME = M:\726-004_Lombard - GWT Bridges Phase I\CADDD Sheets\0756604-act-plrpr1.dgn