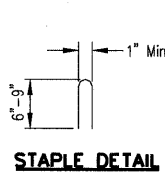


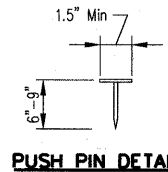
DETAIL 1

DETAIL 2

DETAIL 3



STAPLE DETAIL



PUSH PIN DETAIL

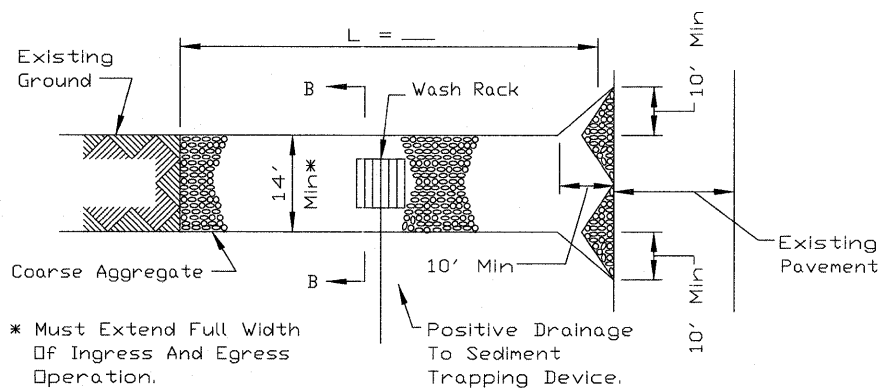
NOTES:

1. Staples shall be placed in a diamond pattern at 2 per s.y. for stitched blankets. Non-stitched shall use 4 staples per s.y. of material. This equates to 200 staples with stitched blanket and 400 staples with non-stitched blanket per 100 s.y. of material.
2. Staple or push pin lengths shall be selected based on soil type and conditions. (minimum staple length is 6")
3. Erosion control material shall be placed in contact with the soil over a prepared seedbed.
4. All anchor slots shall be stapled at approximately 12" intervals.

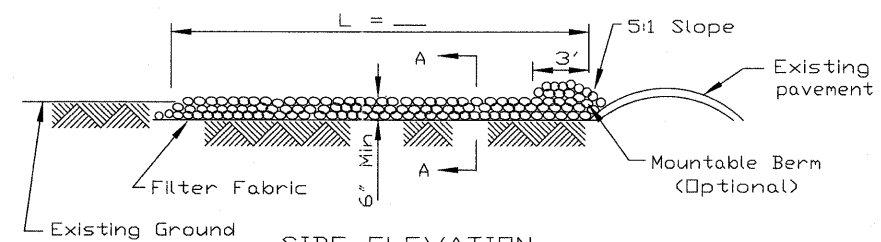
**EROSION CONTROL
BLANKET INSTALLATION DETAILS**

Designed	Date
Drawn B. JOHNSON	11/08
Checked	
Approved	

STABILIZED CONSTRUCTION ENTRANCE PLAN



PLAN VIEW



SIDE ELEVATION

NOTES:

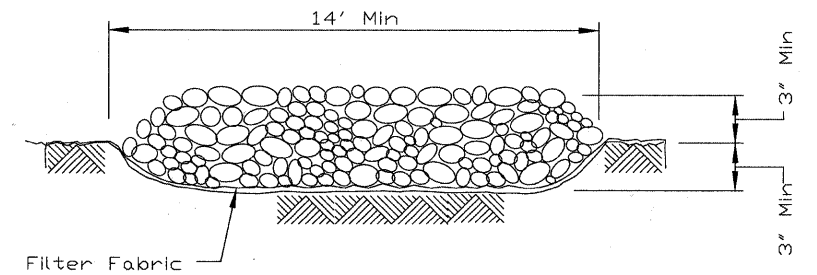
1. Filter fabric shall meet the requirements of material specification 592 GEOTEXTILE, Table I or 2, Class I, II or IV and shall be placed over the cleared area prior to the placing of rock.
2. Rock or reclaimed concrete shall meet one of the following IDDT coarse aggregate gradation, CA-1, CA-2, CA-3 or CA-4 and be placed according to construction specification 25 ROCKFILL using placement Method 1 and Class III compaction.
3. Any drainage facilities required because of washing shall be constructed according to manufacturers specifications.
4. If wash racks are used they shall be installed according to the manufacturer's specifications.

REFERENCE Project	Date
Designed	Date
Checked	Date
Approved	Date

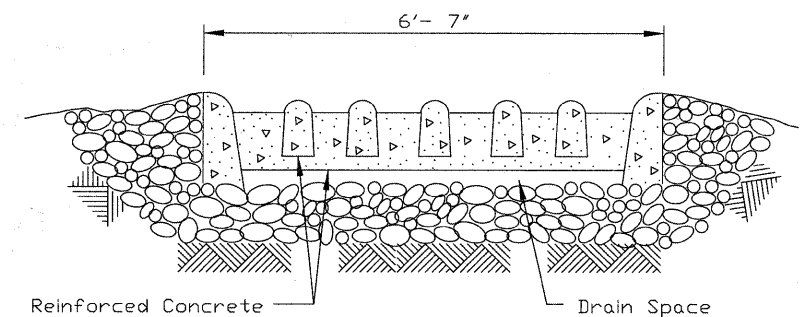


STANDARD DWG. NO. IL-630
SHEET 1 OF 2
DATE 8-18-94

STABILIZED CONSTRUCTION ENTRANCE PLAN



SECTION A-A



SECTION B-B

REFERENCE Project	Date
Designed	Date
Checked	Date
Approved	Date



STANDARD DWG. NO. IL-630
SHEET 2 OF 2
DATE 8-18-94

FILE NAME = M:\785-004_Lombard - DWG Br-rdges Phase II\CADD Sheets\0756004-ah-er-entrance 2.dwg



USER NAME = daly	DESIGNED - BD	REVISED -
PLOT SCALE = 20.0000' / IN.	DRAWN - DC	REVISED -
PLOT DATE = 7/22/2011	CHECKED - BD	REVISED -
	DATE -	REVISED -

**STATE OF ILLINOIS
GREAT WESTERN TRAIL**

EROSION AND SEDIMENT CONTROL DETAILS

SCALE: NTS	SHEET NO.	SHEETS	STA.	TO STA.
------------	-----------	--------	------	---------

F.A. RTE.	SECTION	COUNTY	TOTAL SHEETS	SHEET NO.
	06-00151-00-BR	DUPAGE	201	28
CONTRACT NO. 63568				
ILLINOIS FED. AID PROJECT				