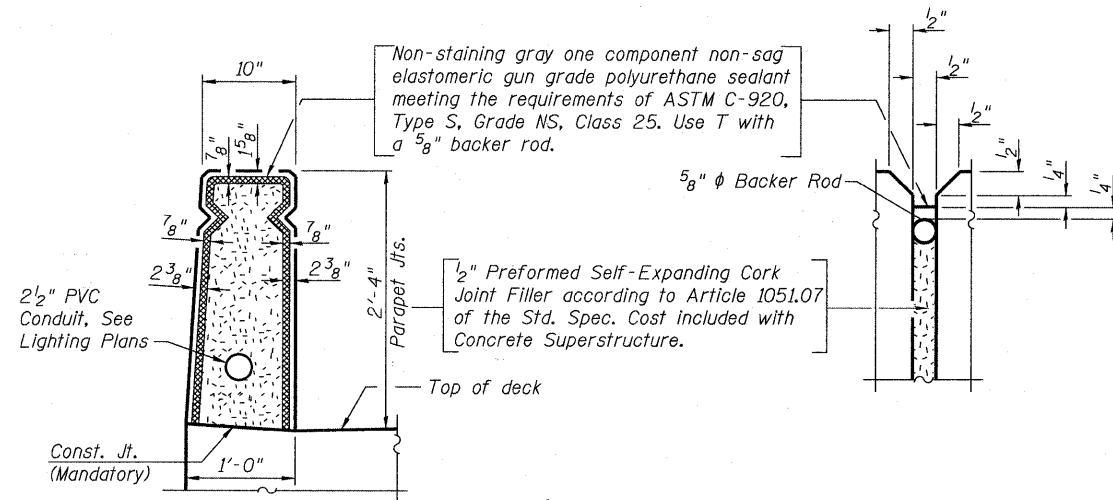
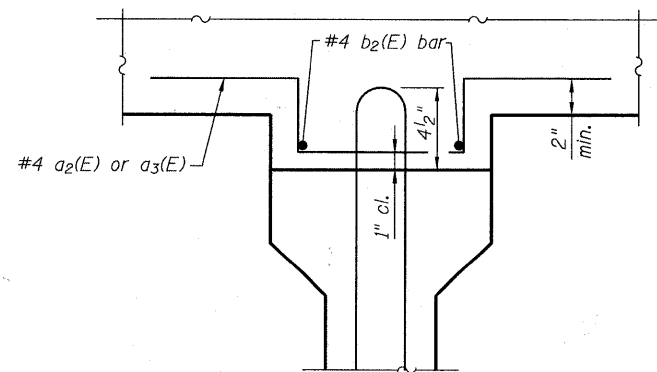


INSIDE ELEVATION OF PARAPET

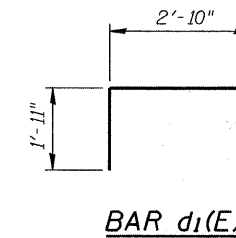
* Locate top row of longitudinal parapet reinforcement clear of rail post anchors, maintain minimum reinforcement clearance.



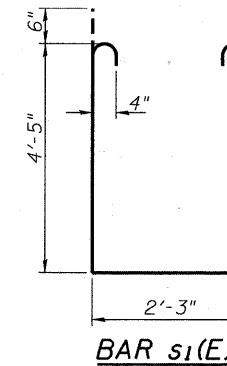
PARAPET JOINT DETAILS



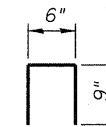
FILLET REINFORCEMENT DETAIL



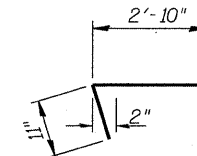
BAR d1(E)



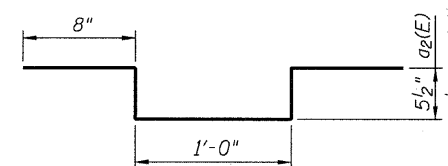
BAR s1(E)



BAR d2(E)



BAR d(E)



BARS a2(E) & a3(E)

**SUPERSTRUCTURE
BILL OF MATERIAL**

Bar	No.	Size	Length	Shape
a(E)	289	#5	15'-8"	—
a1(E)	4	#5	15'-9"	—
a2(E)	104	#4	3'-3"	—
a3(E)	220	#4	3'-7"	—
b(E)	54	#5	35'-0"	—
b1(E)	52	#5	27'-1"	—
b2(E)	24	#4	28'-6"	—
d(E)	200	#4	3'-9"	—
d1(E)	200	#6	4'-9"	—
d2(E)	44	#4	2'-0"	—
e(E)	64	#4	19'-4"	—
e1(E)	8	#4	19'-8"	—
m(E)	6	#6	15'-8"	—
m1(E)	16	#6	7'-11"	—
m2(E)	6	#6	2'-4"	—
s1(E)	22	#4	12'-1"	—
Reinforcement Bars, Epoxy Coated			Lbs.	12,480
Concrete Superstructure			Cu. Yd.	59.3
Anti-Graffiti Protection System			Sq. Ft.	1,380
Protective Coat			Sq. Yd.	154
Form Liner Textured Surface, Special			Sq. Ft.	750
Concrete Superstructure, Special			Cu. Yd.	17.0

FILE NAME = s:\7556-2004_lombard - gwt_bridges_phase_1\load_sheets\structural\grace\0223128-007-PARAPET.ELEV.dgn



USER NAME = gonzalo
 PLOT SCALE =
 PLOT DATE = 7/26/2011

DESIGNED JJI
 CHECKED SRT
 DRAWN GM
 CHECKED SRT

REVISED -
 REVISED -
 REVISED -
 REVISED -

**STATE OF ILLINOIS
 GREAT WESTERN TRAIL
 GRACE STREET**

**PARAPET ELEVATION AND SUPERSTRUCTURE DETAILS
 STRUCTURE NO. 022-3120**

SHEET NO. 7 OF 25 SHEETS

F.A. RTE.	SECTION	COUNTY	TOTAL SHEETS	SHEET NO.
	06-00151-00-BR	DuPAGE	201	59
CONTRACT NO. 63568				
ILLINOIS FED. AID PROJECT				