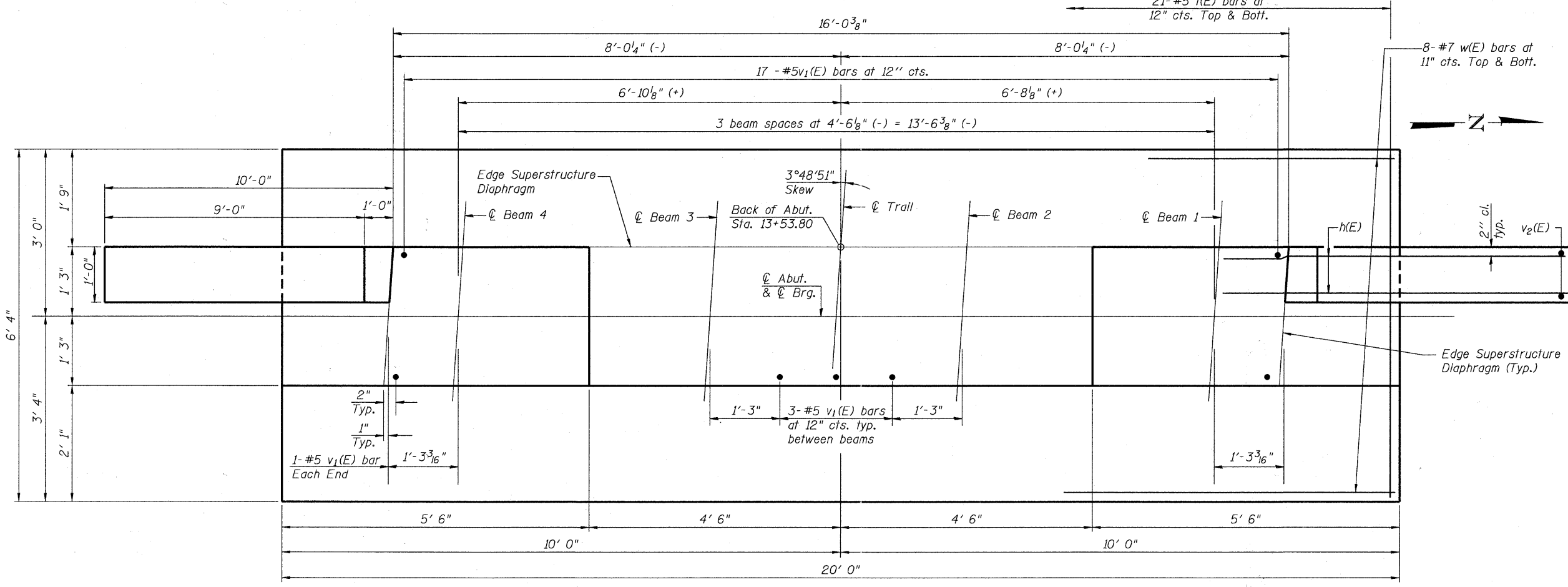
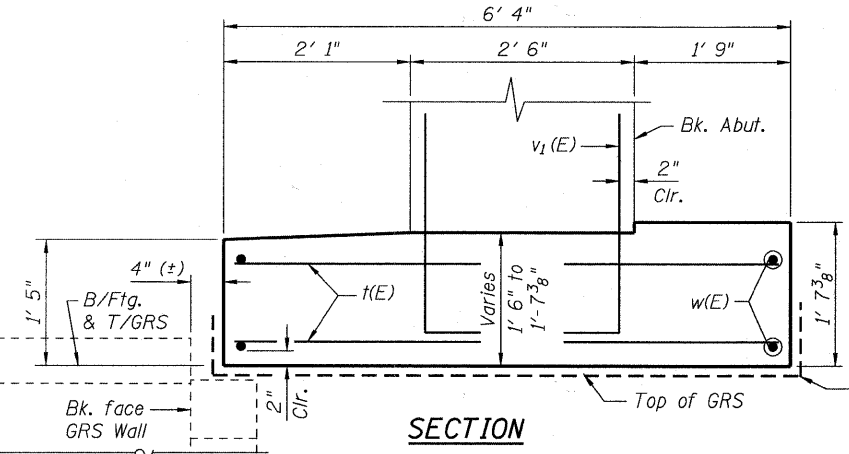


ELEVATION
(Looking West)

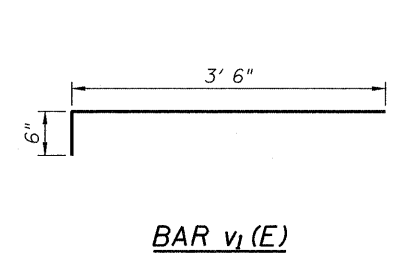


PLAN

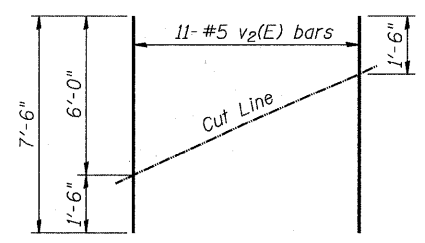


SECTION

2-Layers of 10 mil. polyethylene bottom of footing and 6" up on sides. Bottom of footing and wingwall. Cost included with Concrete Structures.



BAR v1(E)



FIELD CUTTING DIAGRAM

Order v2(E) full length. Cut as shown and use remainder of bars in opposite face.

BILL OF MATERIAL

Bar	No.	Size	Length	Shape
h(E)	28	#6	13'-1"	—
t(E)	42	#5	6'-0"	—
w(E)	16	#7	19'-8"	—
v1(E)	28	#5	4'-0"	—
v2(E)	22	#5	7'-6"	—
Concrete Structures			Cu. Yd.	10.5
Reinforcement Bars, Epoxy Coated			Pound	1,780
Anti-Graffiti Protection System			Sq. Ft.	120
Form Liner Textured Surface, Special			Sq. Ft.	60

Notes:
Contractor Shall coordinate abutment construction with construction of GRS-IBS and settlement waiting period.
Pour steps monolithically with footing.

FILE NAME = w:\756-804\lombard - gnt bridges phase 1\cadd sheets\structural\grace\022312-012-WEST ABUTMENT.dgn

Bollinger, Lach & Associates, Inc.
ITASCA, ILLINOIS

USER NAME = gonzalo
PLOT SCALE =
PLOT DATE = 7/26/2011

DESIGNED *JJI*
CHECKED *SRT*
DRAWN *GM*
CHECKED *SRT*

REVISED -
REVISED -
REVISED -
REVISED -

**STATE OF ILLINOIS
GREAT WESTERN TRAIL
GRACE STREET**

**WEST ABUTMENT
STRUCTURE NO. 022-3120**
SHEET NO. 12 OF 25 SHEETS

F.A. RTE.	SECTION	COUNTY	TOTAL SHEETS	SHEET NO.
	06-00151-00-BR	DuPAGE	201	64
			CONTRACT NO. 63568	
ILLINOIS FED. AID PROJECT				