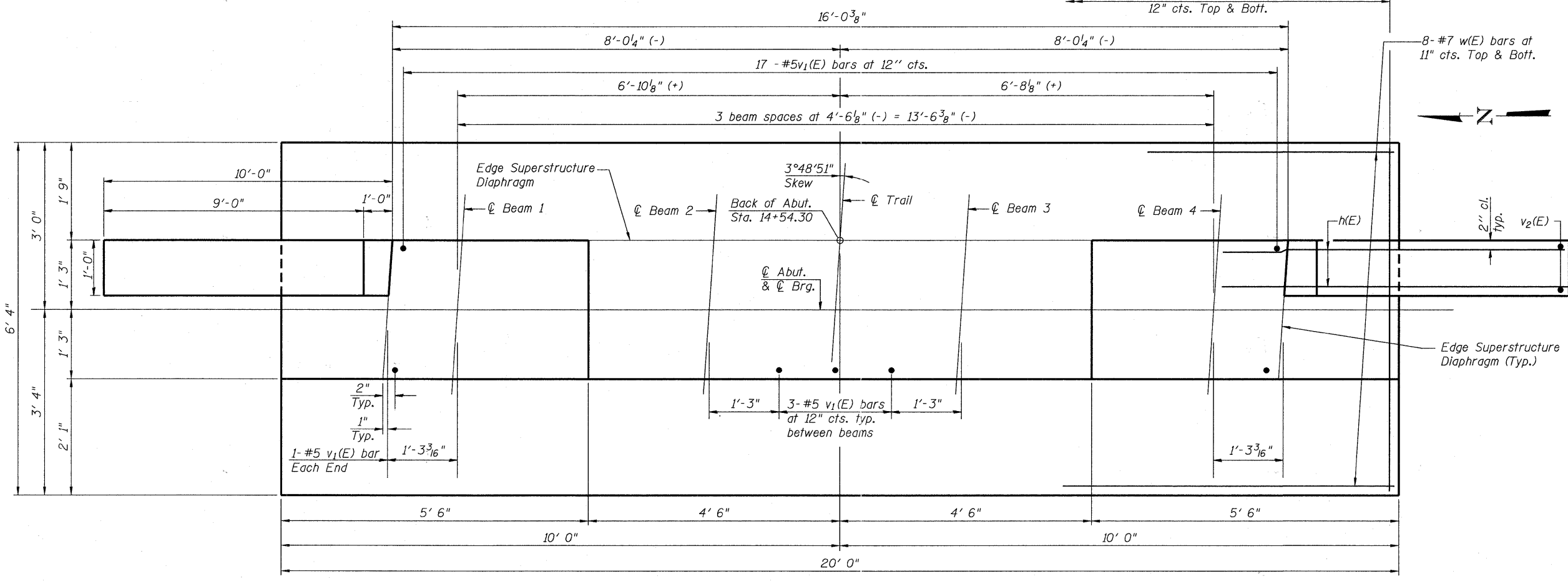
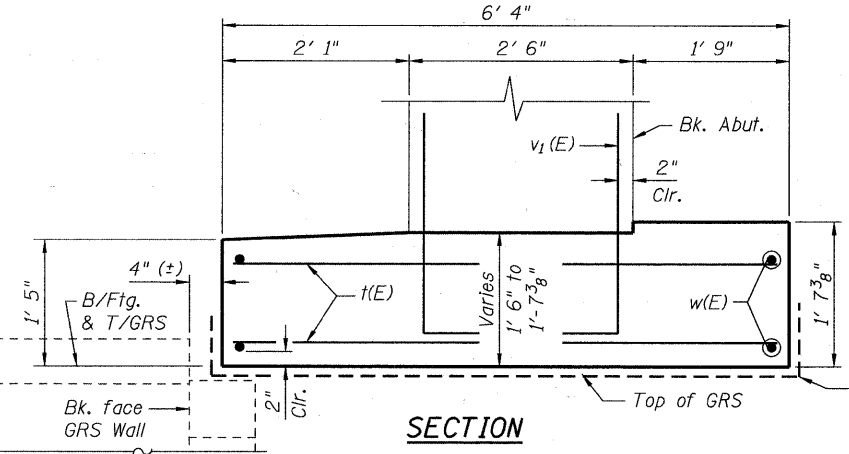


ELEVATION
(Looking East)

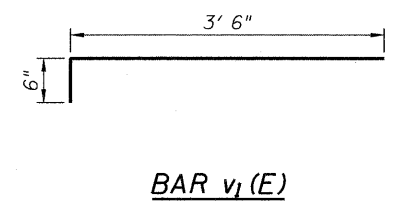


PLAN

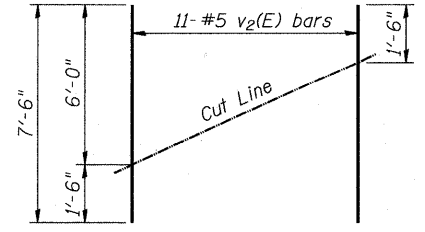


SECTION

2-Layers of 10 mil. polyethylene bottom of footing and 6" up on sides. Bottom of footing and wingwall. Cost included with Concrete Structures.



BAR v1(E)



FIELD CUTTING DIAGRAM

Order v2(E) full length. Cut as shown and use remainder of bars in opposite face.

BILL OF MATERIAL

Bar	No.	Size	Length	Shape
h(E)	28	#6	13'-1"	
t(E)	42	#5	6'-0"	
w(E)	16	#7	19'-8"	
v1(E)	28	#5	4'-0"	
v2(E)	22	#5	7'-6"	
Concrete Structures			Cu. Yd.	10.5
Reinforcement Bars, Epoxy Coated			Pound	1,780
Anti-Graffiti Protection System			Sq. Ft.	120
Form Liner Textured Surface, Special			Sq. Ft.	60

Notes:
Contractor Shall coordinate abutment construction with construction of GRS-IBS and settlement waiting period.
Pour steps monolithically with footing.

FILE NAME = s:\756-004\lombard - gnt bridges - phase 11\cadd sheets\structural\graca\0223128-015-EAS+ABUTMENT.dgn

Bollinger, Lach & Associates, Inc.
ITASCA, ILLINOIS

USER NAME = gonzalo	DESIGNED JJT	REVISED -
PLOT SCALE =	CHECKED SRT	REVISED -
PLOT DATE = 7/26/2011	DRAWN GM	REVISED -
	CHECKED SRT	REVISED -

STATE OF ILLINOIS
GREAT WESTERN TRAIL
GRACE STREET

EAST ABUTMENT
STRUCTURE NO. 022-3120
SHEET NO. 13 OF 25 SHEETS

F.A. RTE.	SECTION	COUNTY	TOTAL SHEETS	SHEET NO.
	06-00151-00-BR	DuPAGE	201	65
			CONTRACT NO. 63568	
ILLINOIS FED. AID PROJECT				