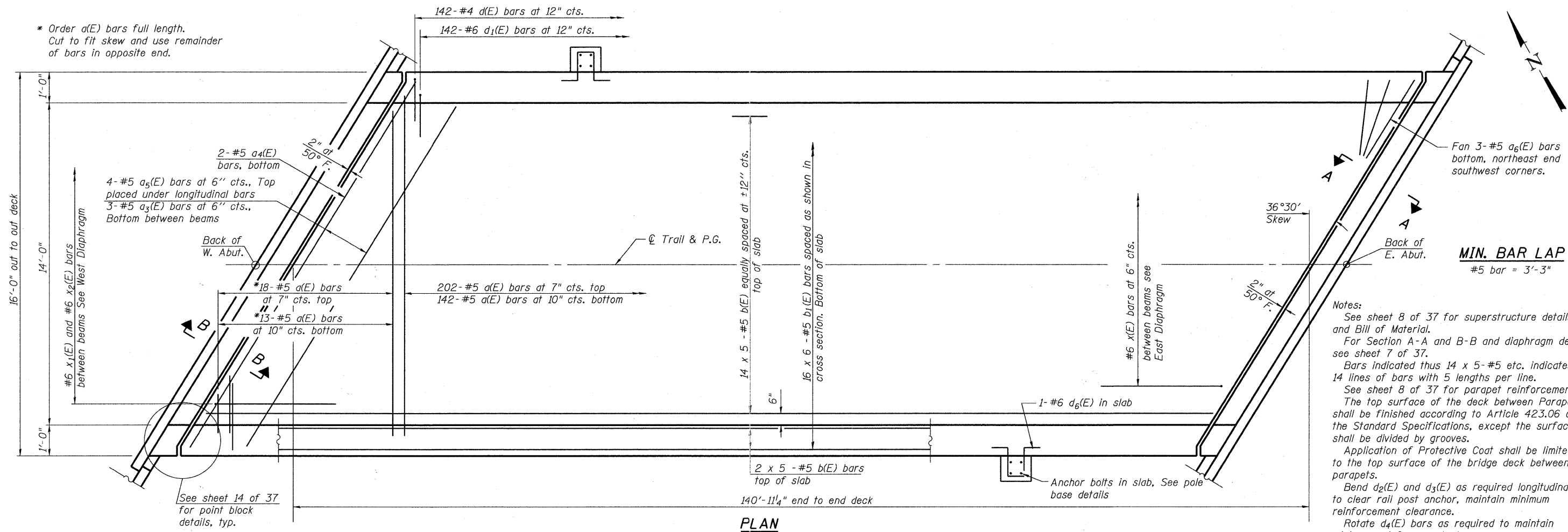
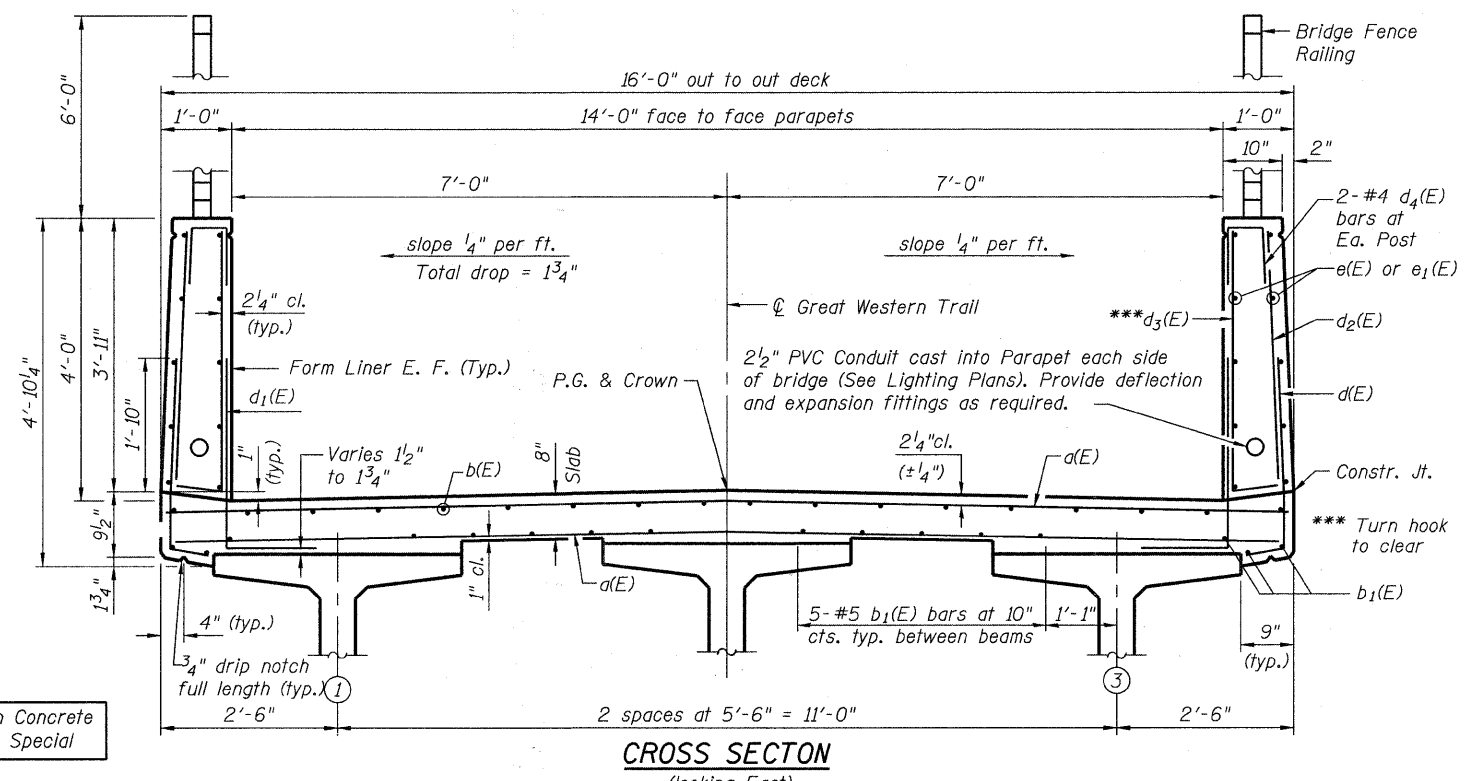
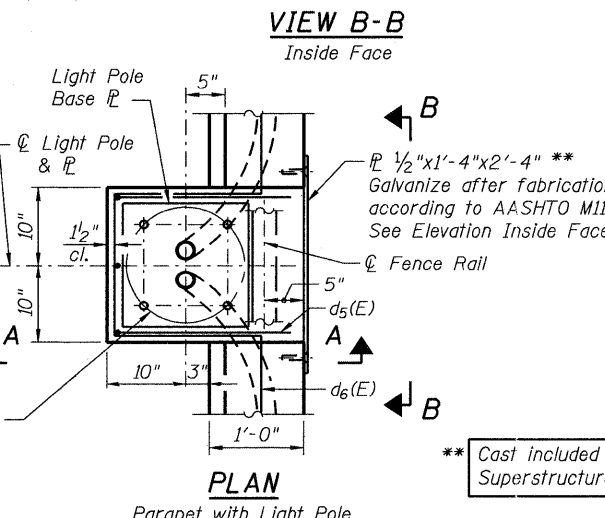
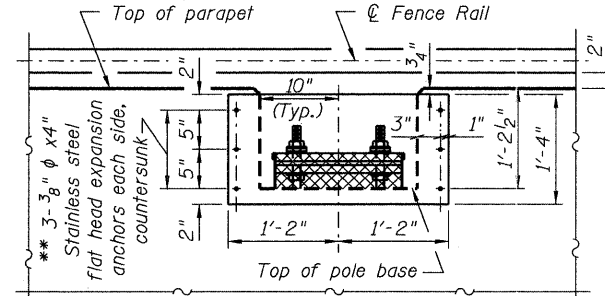
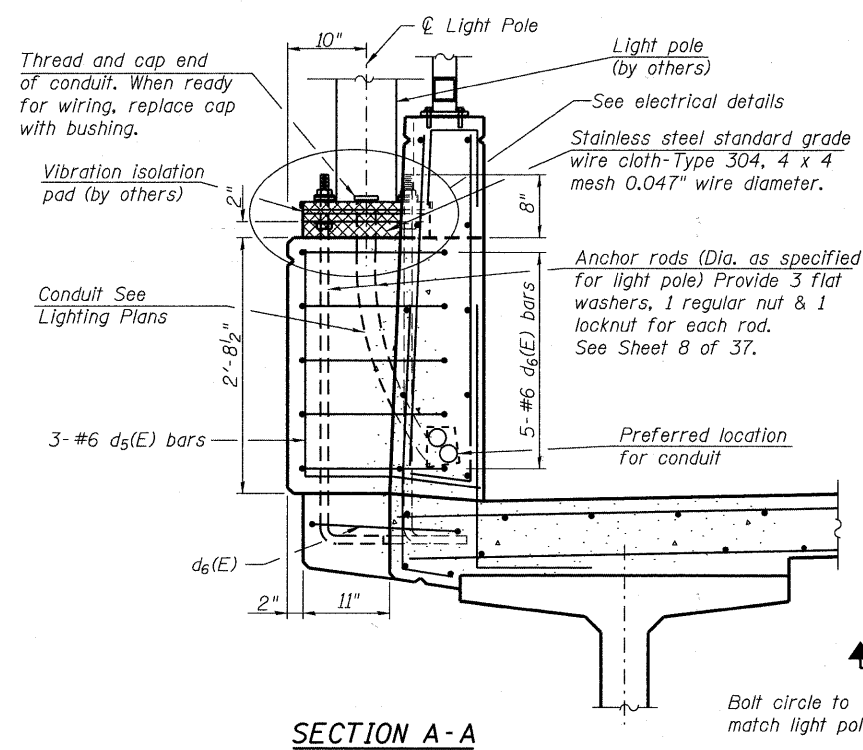


* Order a(E) bars full length.
Cut to fit skew and use remainder
of bars in opposite end.



MIN. BAR LAP
#5 bar = 3'-3"

Notes:
See sheet 8 of 37 for superstructure details and Bill of Material.
For Section A-A and B-B and diaphragm details see sheet 7 of 37.
Bars indicated thus 14 x 5-#5 etc. indicates 14 lines of bars with 5 lengths per line.
See sheet 8 of 37 for parapet reinforcement.
The top surface of the deck between Parapets shall be finished according to Article 423.06 of the Standard Specifications, except the surface shall be divided by grooves.
Application of Protective Coat shall be limited to the top surface of the bridge deck between parapets.
Bend d2(E) and d3(E) as required longitudinally to clear rail post anchor, maintain minimum reinforcement clearance.
Rotate d4(E) bars as required to maintain minimum reinforcement clearance.
Parapet concrete to be paid for as Concrete Superstructure, Special.



FILE NAME = s:\756-004\lombard - get bridges\phase 1\wood\sheet\structure\IPRR\0223122-006-Superstructure_Plan.dwg

Bollinger, Lach & Associates, Inc.
ITASCA, ILLINOIS

USER NAME = gonzalo	DESIGNED SRT	REVISIONS
PLOT SCALE =	CHECKED JJI	REVISIONS
PLOT DATE = 7/26/2011	DRAWN GM	REVISIONS
	CHECKED JJI	REVISIONS

**STATE OF ILLINOIS
GREAT WESTERN TRAIL
UNION PACIFIC RAILROAD**

**SUPERSTRUCTURE
STRUCTURE NO. 022-3122**
SHEET NO. 6 OF 37 SHEETS

F.A. RTE.	SECTION	COUNTY	TOTAL SHEETS	SHEET NO.
	06-00151-00-BR	DuPAGE	201	86
CONTRACT NO. 63568			ILLINOIS FED. AID PROJECT	