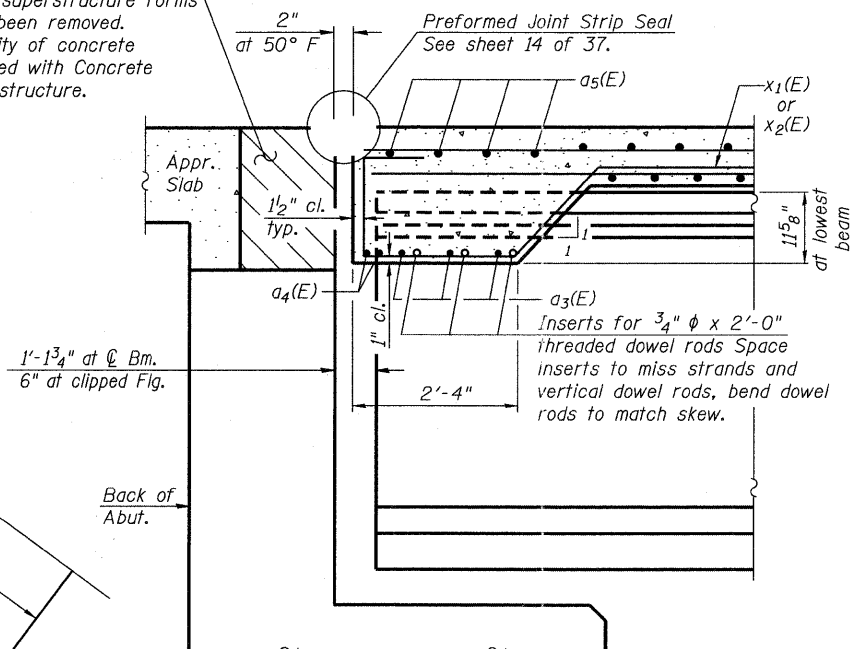
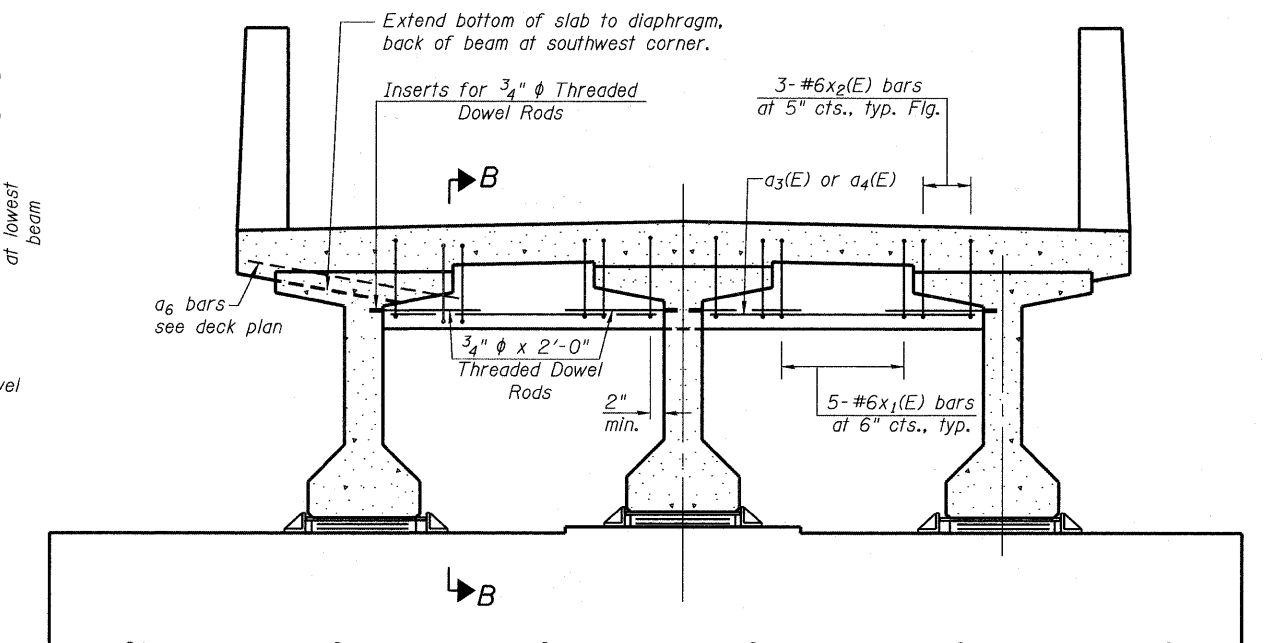


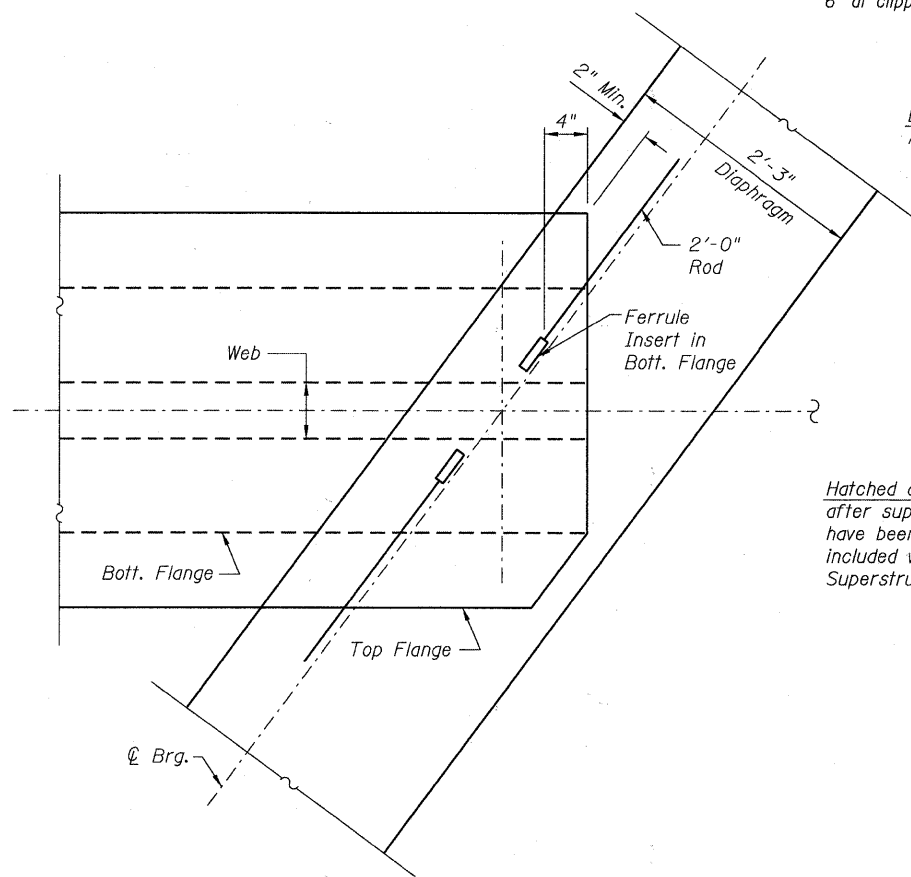
Hatched area to be poured after superstructure forms have been removed. Quantity of concrete included with Concrete Superstructure.



**SECTION B-B
AT WEST ABUTMENT**
(at Rt. Ls)

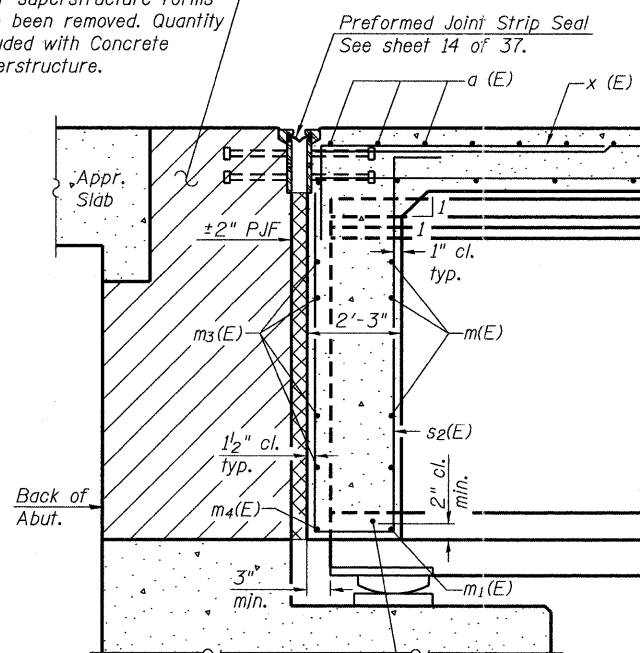


DIAPHRAGM AT WEST ABUTMENT

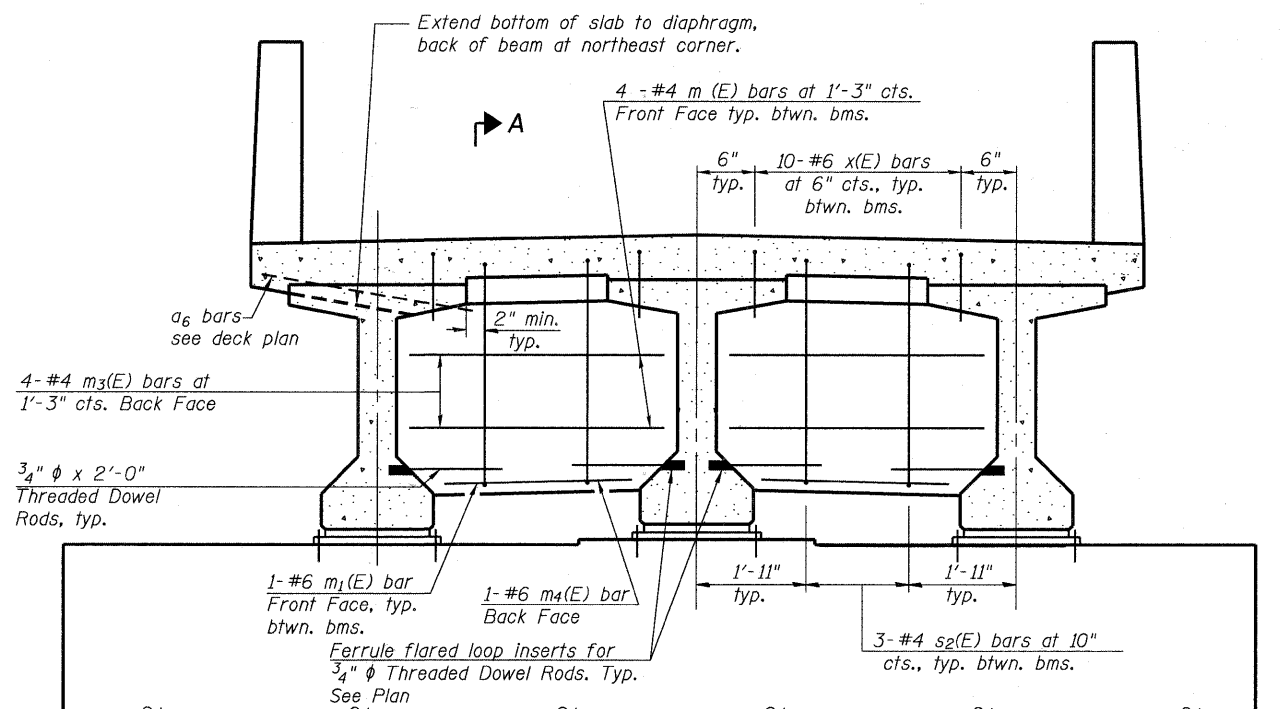


PLAN EAST DIAPHRAGM

Hatched area to be poured after superstructure forms have been removed. Quantity included with Concrete Superstructure.



**SECTION A-A
AT EAST ABUTMENT**
(at Rt. Ls)



DIAPHRAGM AT EAST ABUTMENT

Notes:
Reinforcement bars in diaphragm are billed with superstructure on sheet 8 of 37.
Concrete in diaphragm is included with Concrete Superstructure on sheet 8 of 37.
The x(E), x1(E), x2(E) and s2(E) bars shall be placed parallel to the beams. Spacing for these bars shall be at right angles to the beams.

FILE NAME = w:\756-004\lombard - gwt bridges phase 1\load sheets\structural\IPRR\0223122-007-Diaphragm_Details.dgn



USER NAME = genzalo	DESIGNED SRT	REVISED -
PLOT SCALE =	CHECKED JJI	REVISED -
PLOT DATE = 7/26/2011	DRAWN GM	REVISED -
	CHECKED JJI	REVISED -

**STATE OF ILLINOIS
GREAT WESTERN TRAIL
UNION PACIFIC RAILROAD**

**DIAPHRAGM DETAILS
STRUCTURE NO. 022-3122**
SHEET NO. 7 OF 37 SHEETS

F.A. RTE.	SECTION	COUNTY	TOTAL SHEETS	SHEET NO.
	06-00151-00-BR	DuPAGE	201	87
			CONTRACT NO. 63568	
ILLINOIS FED. AID PROJECT				