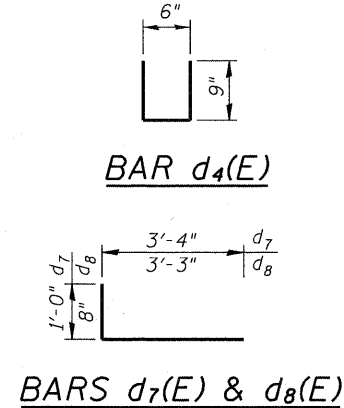
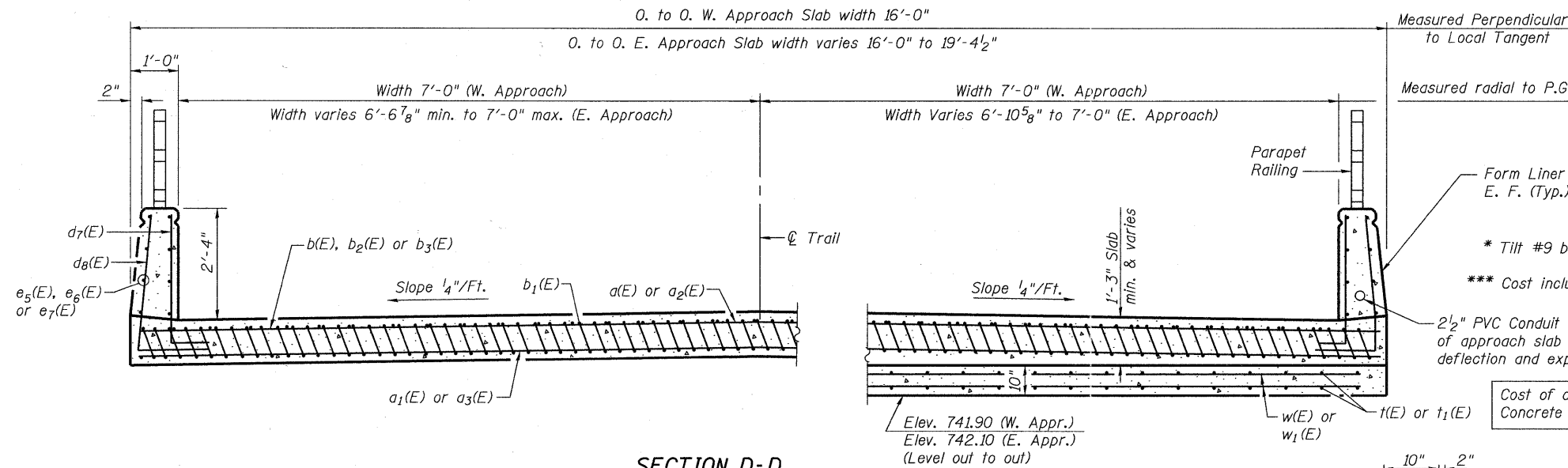


Notes:
 Approach slab concrete shall be paid for as Concrete Superstructure.
 Parapet concrete to be paid for as Concrete Superstructure, Special.
 Approach footing concrete shall be paid for as Concrete Structures.
 Reinforcement shall be paid for as Reinforcement Bars, Epoxy Coated.
 For $v(E)$ bar details, see sheets 20 and 22 of 37.
 The approach footing maximum applied service bearing pressure (Q_{max}) = 2.0 ksf.
 For bar splicer details, see sheet 24 of 37.
 Cost of excavation for approach footing included with Concrete Structures.
 For additional parapet details, see sheet 14 of 37.
 The top surface of the slab between Parapets shall be finished according to Article 423.06 of the Standard Specifications, except the surface shall be divided by grooves.
 Application of Protective Coat shall be limited to the top surface of the slab between parapets.
 See Architectural Treatment sheet for limits of Concrete Superstructure, Special and Form Liner Textured Surface, Special.



**WEST APPROACH
BILL OF MATERIAL**

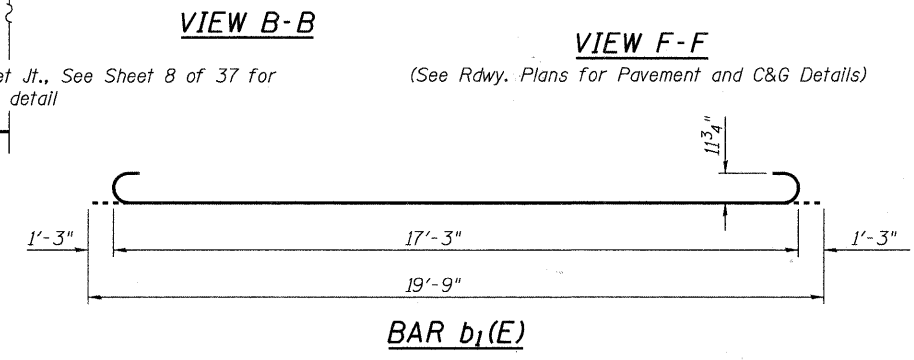
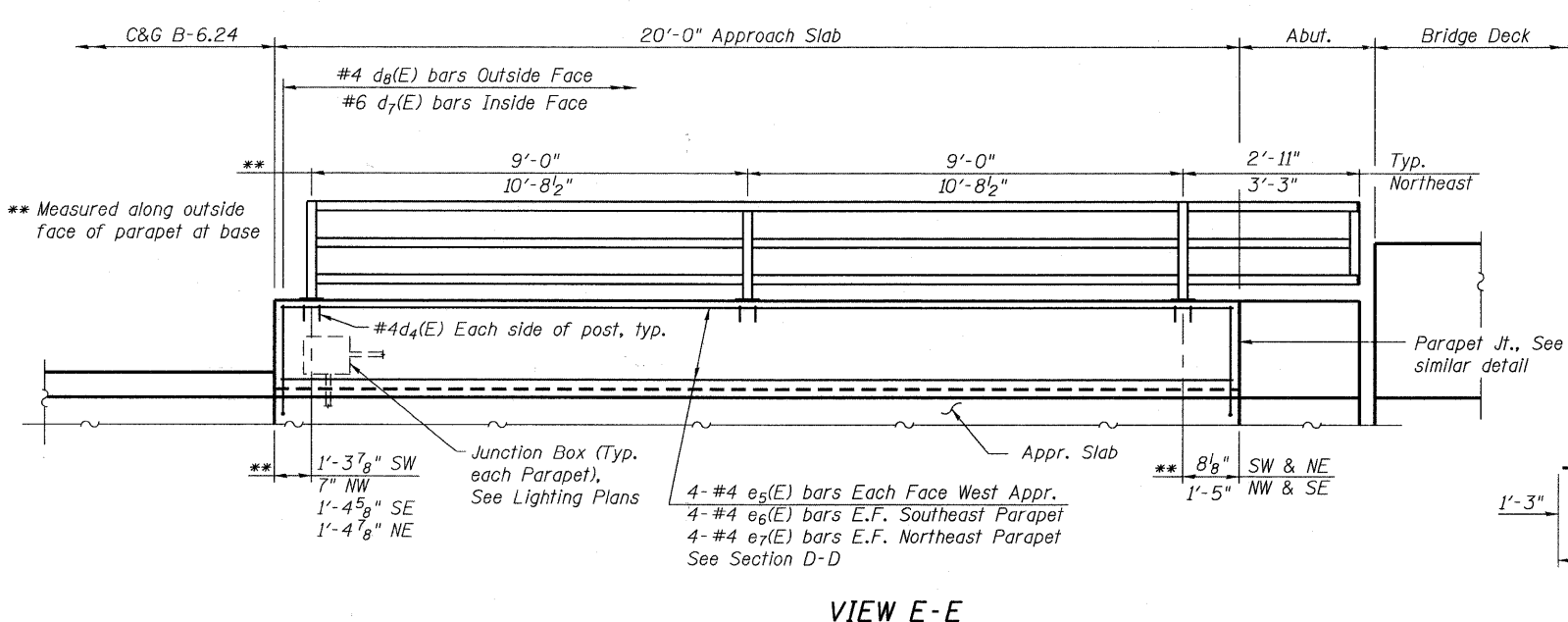
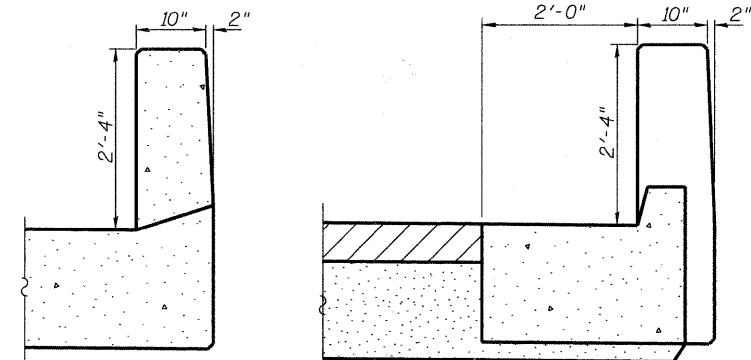
Bar	No.	Size	Length	Shape
$d(E)$	17	#4	19'-7"	—
$a_1(E)$	31	#5	19'-7"	—
$b(E)$	14	#4	19'-8"	—
$b_1(E)$	17	#9	20'-0"	—
$d_4(E)$	12	#4	2'-0"	—
$d_7(E)$	42	#6	4'-4"	—
$d_8(E)$	42	#4	3'-11"	—
$e_5(E)$	16	#4	19'-8"	—
$t(E)$	34	#4	7'-2"	—
$w(E)$	26	#5	19'-7"	—
Concrete Superstructure		Cu. Yd.	15.8	
Concrete Superstructure, Special		Cu. Yd.	3.2	
Concrete Structures		Cu. Yd.	3.7	
Reinforcement Bars, Epoxy Coated		Pound	3,500	
Anti-Graffiti Protection System		Sq. Ft.	217	
Form Liner Textured Surface, Special		Sq. Ft.	164	
Protective Coat		Sq. Yd.	32	



* Tilt #9 $b_1(E)$ bars as required to maintain clearance.
 *** Cost included with Concrete Superstructure.
 2 1/2" PVC Conduit cast into Parapet each side of approach slab (See Lighting Plans). Provide deflection and expansion fittings as required.
 Cost of conduit is included with Concrete Superstructure, Special.

**EAST APPROACH
BILL OF MATERIAL**

Bar	No.	Size	Length	Shape
$a_2(E)$	34	#4	13'-2"	—
$a_3(E)$	62	#5	13'-4"	—
$b_1(E)$	20	#9	20'-0"	—
$b_2(E)$	13	#4	20'-6"	—
$b_3(E)$	3	#4	23'-2"	—
$d_4(E)$	12	#4	2'-0"	—
$d_7(E)$	47	#6	4'-4"	—
$d_8(E)$	47	#4	3'-11"	—
$e_6(E)$	8	#4	20'-6"	—
$e_7(E)$	8	#4	23'-2"	—
$t_1(E)$	40	#4	8'-5"	—
$w_1(E)$	26	#5	23'-9"	—
Concrete Superstructure		Cu. Yd.	17.7	
Concrete Superstructure, Special		Cu. Yd.	3.6	
Concrete Structures		Cu. Yd.	4.5	
Reinforcement Bars, Epoxy Coated		Pound	3,480	
Anti-Graffiti Protection System		Sq. Ft.	244	
Form Liner Textured Surface, Special		Sq. Ft.	185	
Protective Coat		Sq. Yd.	35	



(Sheet 3 of 3)

FILE NAME = w:\756-004\lombard - gwt bridges phase 1\load sheets\structural\IPRR\0223122-011-BRIDGE APPROACH SLAB DETAILS.dgn