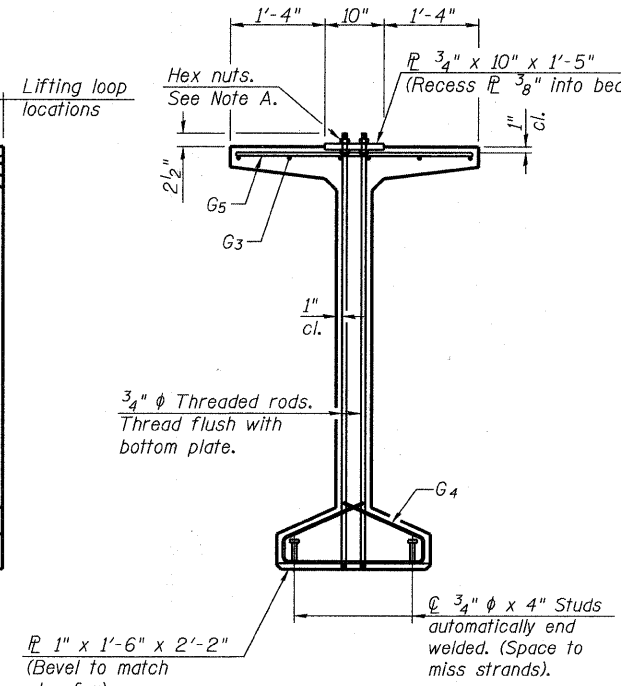
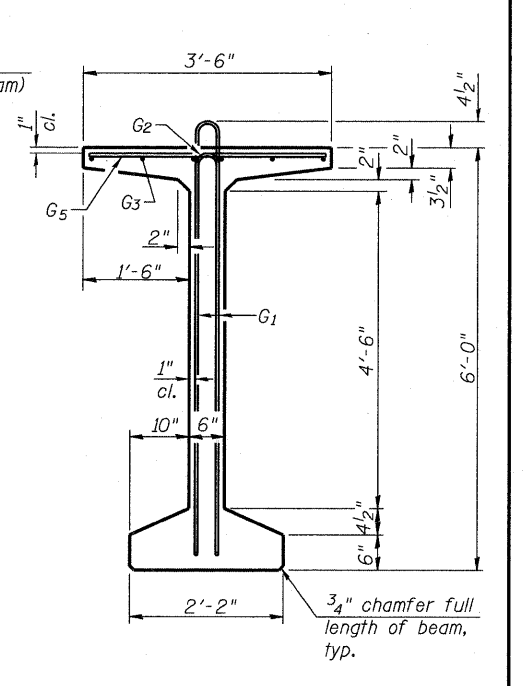


ELEVATION OF BEAM
(Showing reinforcement & dimensions)

Note A:
Hex nuts (top and bottom) with lock washers (top). Only tighten sufficiently to compress lock washers.

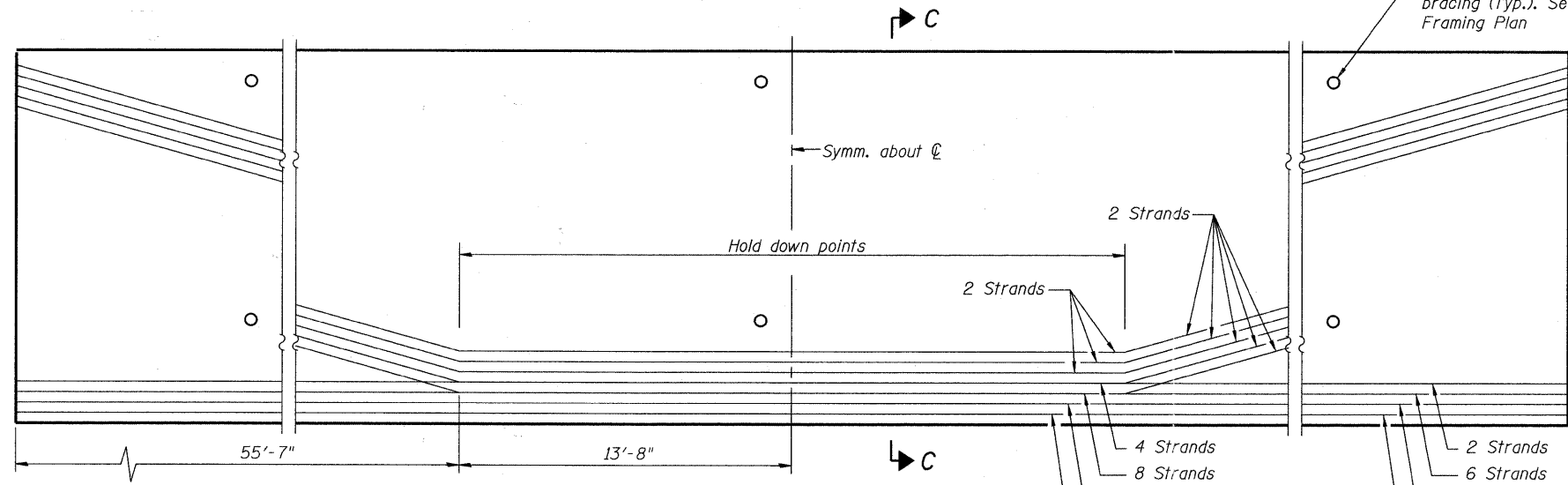


SECTION A-A

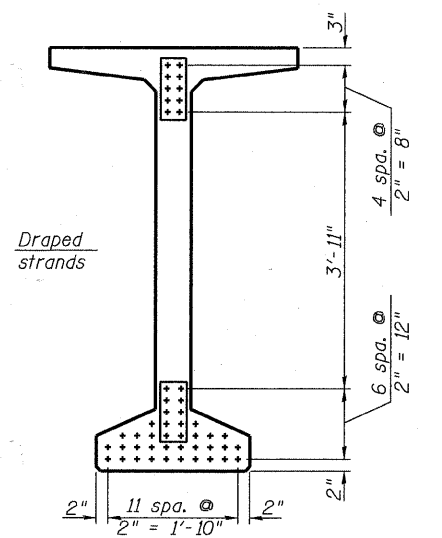


SECTION B-B

* 4 spaces at 3 1/4" = 1'-1".
** 5-3/4" φ threaded dowel rods at 3 1/4" cts., each face.



ELEVATION OF BEAM
(Showing prestressing steel)



SECTION C-C

*****BAR LIST
ONE BEAM ONLY**

Bar	No.	Size	Length	Shape
G ₁	232	#4	13'-5"	∩L
G ₂	20	#4	11'-8"	∩
G ₃	18	#6	47'-11"	—
G ₄	56	#3	4'-11"	∩
G ₅	185	#5	3'-4"	—

***For information only

Notes:
See sheet 17 of 37 for additional details and Bill of Material.
Required release strength, f'ci, shall be 6,000 psi.
Additional lifting loops and partial prestressing may be added for shipping and handling. Cost included in beam.

FILE NAME = s:\y756-204_lombard - gwt_bridges\phase 11\cadd_sheets\structural\UPRR\0223122-016-PPC BULB T-BEAM DETAILS 1.dgn

PBT-4-72

7-1-10

Bollinger, Lach & Associates, Inc.
ITASCA, ILLINOIS

USER NAME = gonzalo	DESIGNED SRT	REVISED -
PLOT SCALE =	CHECKED JJI	REVISED -
PLOT DATE = 7/26/2011	DRAWN GM	REVISED -
	CHECKED JJI	REVISED -

**STATE OF ILLINOIS
GREAT WESTERN TRAIL
UNION PACIFIC RAILROAD**

**72" PPC BULB T-BEAM
STRUCTURE NO. 022-3122**
SHEET NO. 16 OF 37 SHEETS

F.A. RTE.	SECTION	COUNTY	TOTAL SHEETS	SHEET NO.
	06-00151-00-BR	DuPAGE	201	96
			CONTRACT NO. 63568	
ILLINOIS FED. AID PROJECT				