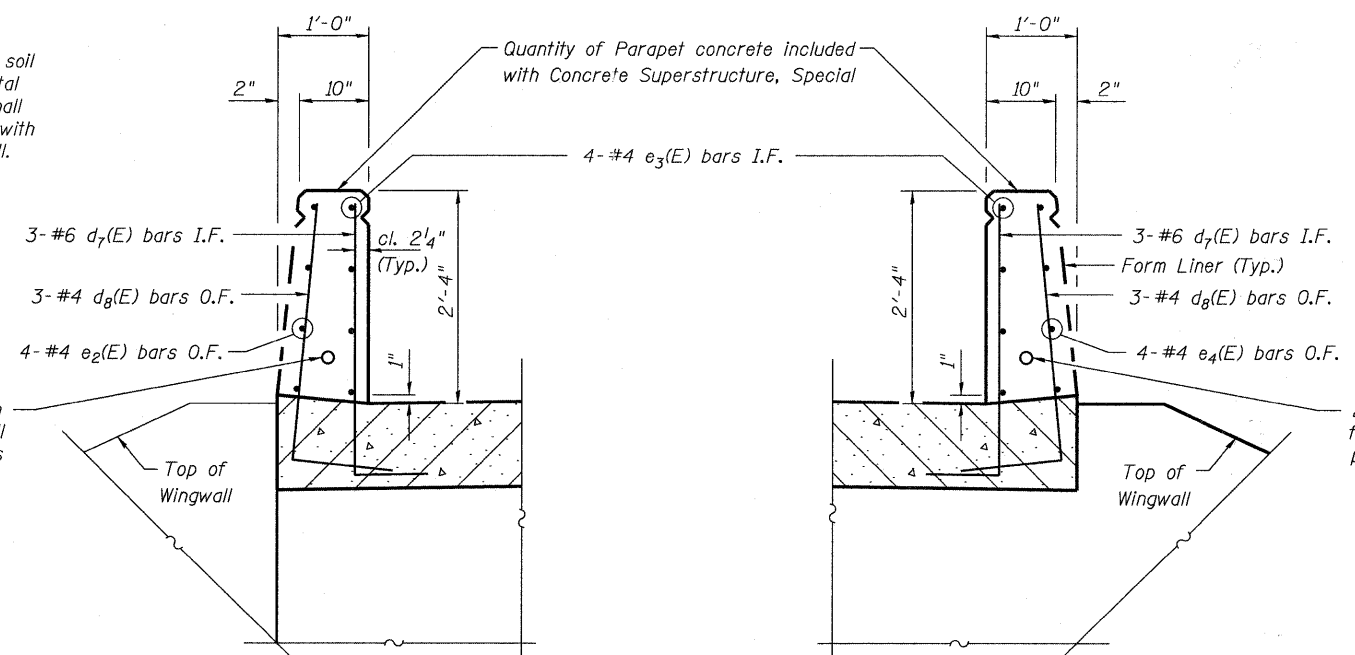
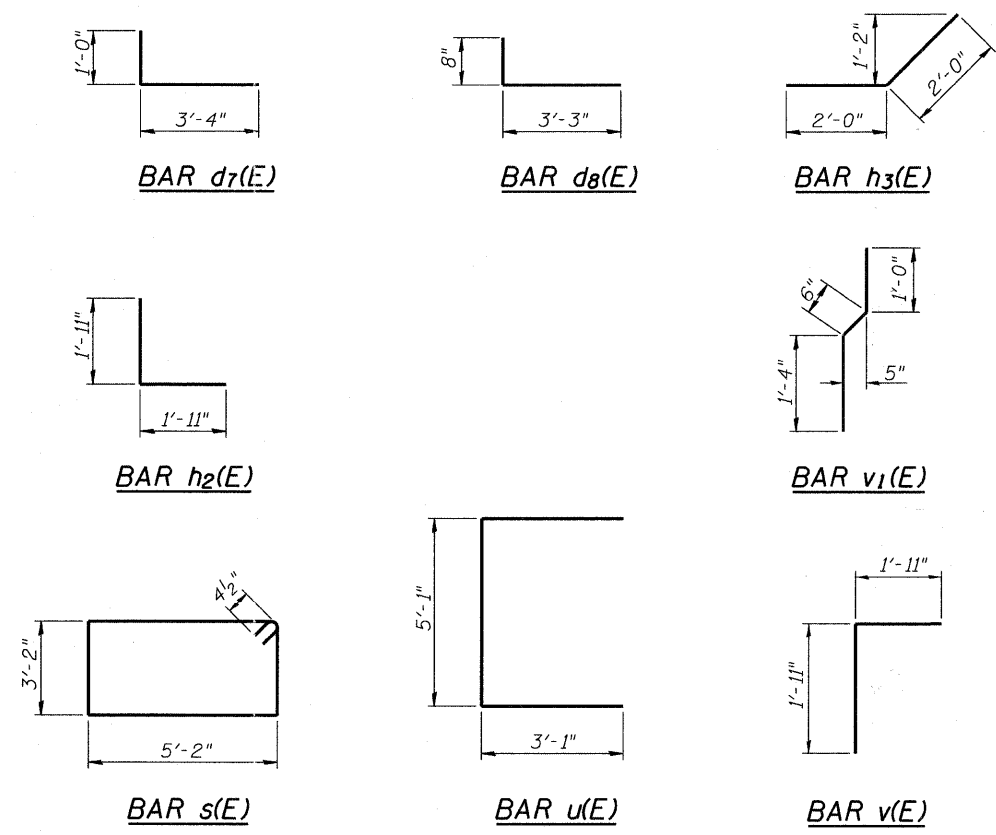


SEC. THRU ABUT.

** The M.S.E. wall supplier shall design the abutment and wingwall soil reinforcement to resist a horizontal force of 2 kips/ft. Contractor shall coordinate abutment construction with construction of MSE retaining wall.



SECTION A-A

(Southwest backwall parapet)

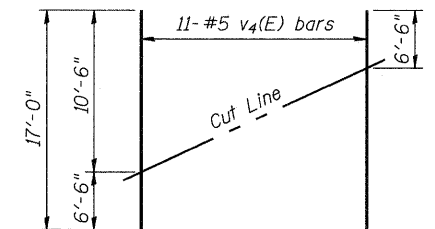
SECTION B-B

(Northwest backwall parapet)

**WEST ABUTMENT
BILL OF MATERIAL**

Bar	No.	Size	Length	Shape
d7(E)	6	#6	4'-4"	
d8(E)	6	#4	3'-11"	
e2(E)	4	#4	2'-2"	
e3(E)	8	#4	1'-7"	
e4(E)	4	#4	1'-3"	
h(E)	6	#5	19'-0"	
h1(E)	5	#6	19'-3"	
h2(E)	8	#5	3'-10"	
h3(E)	8	#5	4'-0"	
h4(E)	32	#7	12'-9"	
h5(E)	16	#5	12'-6"	
h6(E)	6	#5	22'-8"	
p(E)	11	#7	22'-8"	
s(E)	40	#4	17'-5"	
u(E)	8	#6	11'-3"	
v(E)	21	#5	3'-10"	
v1(E)	21	#4	2'-10"	
v2(E)	24	#5	7'-11"	
v3(E)	21	#5	9'-5"	
v4(E)	22	#5	17'-0"	
Concrete Structures			Cu. Yd.	30.2
Concrete Superstructure			Cu. Yd.	1.6
Concrete Superstructure, Special			Cu. Yd.	0.3
Reinforcement Bars, Epoxy Coated			Pound	3,620
Furnishing Steel Piles, HP 12x63			Foot	469
Pile Shoes			Each	8
Bar Splicers			Each	21
Driving Piles			Foot	469
Test Pile, HP 12x63			Each	1
Concrete Sealer			Sq. Ft.	290
Anti-Graffiti Protection System			Sq. Ft.	210
Form Liner Textured Surface, Special			Sq. Ft.	123

For details of Bar Splicers, see sheet 25 of 37.
For details of piles, see sheet 24 of 37.



FIELD CUTTING DIAGRAM

Order v4(E) bars full length. Cut as shown and use remainder of bars in opposite face.

FILE NAME = w:\756-004\ombard - gwt bridges phase 1\load sheets\structural\IPRR\0223122-020-WEST ABUTMENT DETAILS.dgn



USER NAME = gonzo
DESIGNED SRT
CHECKED JJI
DRAWN GM
PLOT DATE = 7/26/2011

DESIGNED SRT
CHECKED JJI
DRAWN GM
CHECKED JJI

REVISED -
REVISED -
REVISED -
REVISED -

**STATE OF ILLINOIS
GREAT WESTERN TRAIL
UNION PACIFIC RAILROAD**

**WEST ABUTMENT DETAILS
STRUCTURE NO. 022-3122**

SHEET NO. 20 OF 37 SHEETS

F.A. RTE.	SECTION	COUNTY	TOTAL SHEETS	SHEET NO.
	06-00151-00-BR	DuPAGE	201	100
CONTRACT NO. 63568			ILLINOIS FED. AID PROJECT	